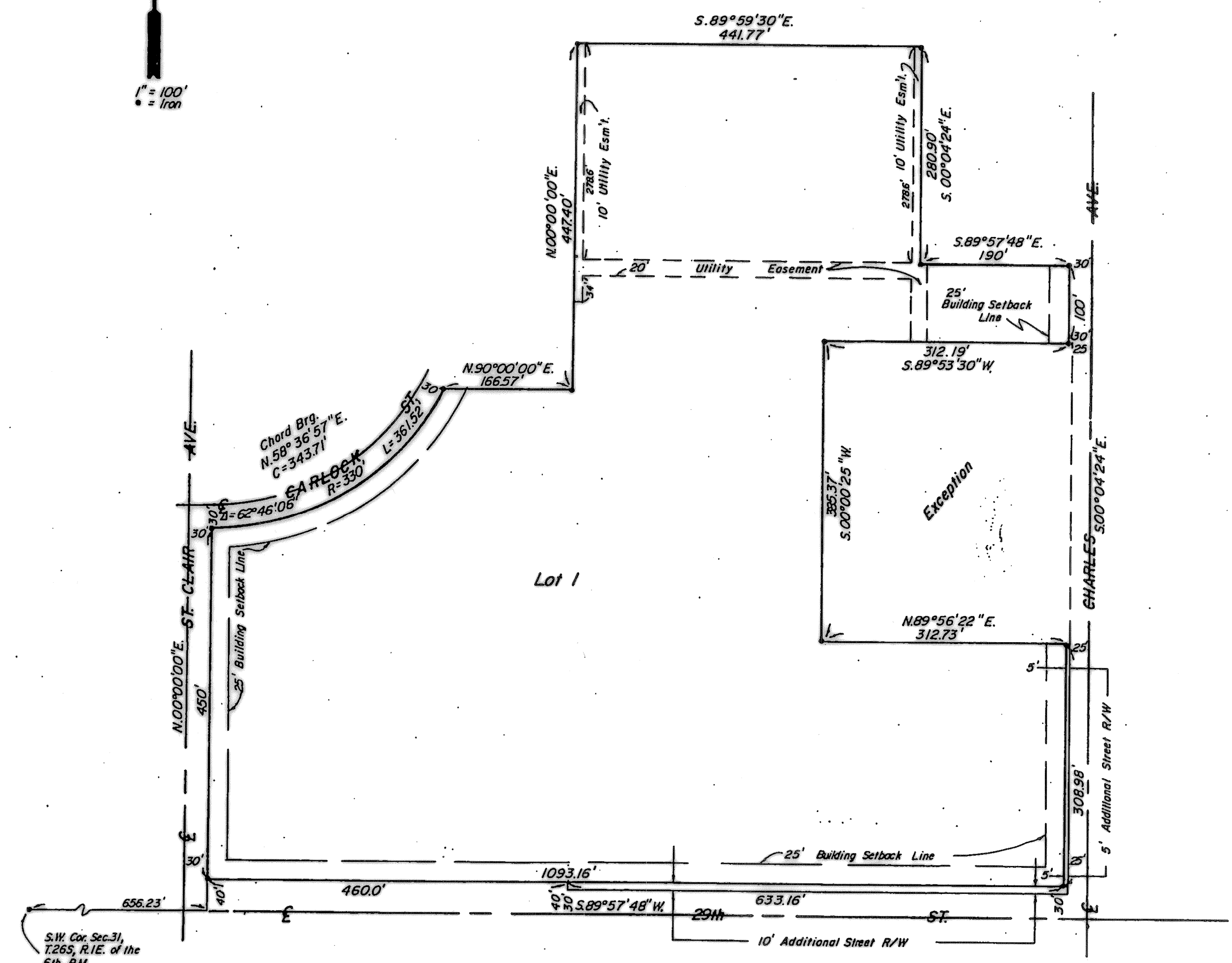


# PLEASANT VALLEY SCHOOL ADDITION

TO WICHITA, SEDGWICK COUNTY, KANSAS

For Reference Only Not to Scale



STATE OF KANSAS, COUNTY OF SEDGWICK, SS:  
 I, Don C. Moehring II, a Civil Engineer in said State and County, do hereby certify that I have surveyed and platted "PLEASANT VALLEY SCHOOL ADDITION" to Wichita, Sedgwick County, Kansas, into a Lot, and Streets, the same being accurately set forth on the accompanying plat and described as follows: A Replat of Lot 1, Block 5, Pierpoint Acres, Sedgwick County, Kansas, together with the North 10.0' of 29th Street right-of-way adjacent thereto, and a Replat of Lots 3, 4, 5, & 6 in Block B, and Lots 3, 4, 5, 6, & 7 in Block D, together with vacated Clarence Ave. adjacent thereto, in Calbuilt Replat of part of Lots 14 and 15 of Russell Tracts, Sedgwick County, Kansas; and the South 1/2 of Lot 16, and the West 320.0' of the North 1/2 of Lot 16, and the West 320.0' of the South 1/2 of Lot 15 except the North 287.33' thereof, in Russell Tracts, Sedgwick County, Kansas; said part of 29th Street and Clarence Avenue are hereby vacated by virtue of KSA 1970 Supp. 12-512(b).

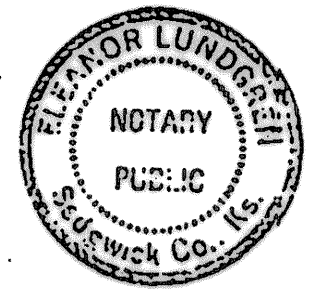
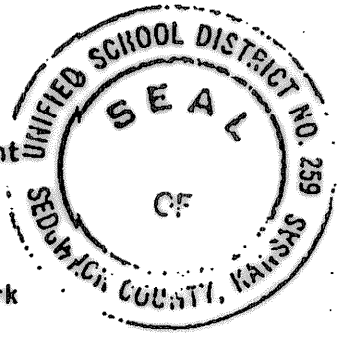
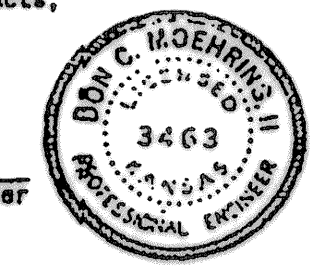
Don C. Moehring II, *Don C. Moehring II* Consulting Engineer  
 Dec. 6, 1976.

Know all men by these presents that we the undersigned, property owners of the land as above set forth in the Civil Engineer's certificate, have caused the same to be surveyed and platted into a Lot, and a Street, the same to be known as "PLEASANT VALLEY SCHOOL ADDITION" to Wichita, Sedgwick County, Kansas. Easements for the construction and maintenance of public utilities, as indicated on the accompanying plat, are hereby granted. The Streets are hereby dedicated to and for the use of the public.

UNIFIED SCHOOL DISTRICT NO. 259 (WICHITA), SEDGWICK COUNTY, KANSAS.  
 Gary N. Pottorff, *Gary N. Pottorff* President  
 Keith L. Kauffman, *Keith L. Kauffman* Clerk

STATE OF KANSAS, COUNTY OF SEDGWICK, SS:  
 Be it remembered that on this 18<sup>th</sup> day of January, 1977, before me, a Notary Public in and for said State and County, came Unified School District No. 259 (Wichita), Sedgwick County, Kansas, by Gary N. Pottorff, President, and Keith L. Kauffman, Clerk, to me personally known to be the same persons who executed the foregoing instrument of writing and duly acknowledged the execution of the same. In testimony whereof I have hereunto set my hand and affixed my notarial seal the day and year above written.

*Eleanor Lundgren*, Notary Public  
 My Commission expires Sept. 24 1980



This plat of "PLEASANT VALLEY SCHOOL ADDITION" has been submitted to and approved by the Wichita-Sedgwick County Metropolitan Area Planning Commission.

Dated this 29<sup>th</sup> day of December, 1976.  
 WICHITA-SEDGWICK COUNTY METROPOLITAN AREA PLANNING COMMISSION  
*William J. Goshy*, Chairman  
*Robert A. Lakin*, Secretary

This plat has been approved and all dedications shown, hereon, if any, accepted by the City Commission of the City of Wichita, Kansas, this 2<sup>nd</sup> day of Jan, 1977.

*Tony Books*, Mayor  
*Donald C. Olack*, City Clerk

This plat has been approved and all dedications shown hereon, if any, accepted by the Board of County Commissioners of Sedgwick County, Kansas, this 1<sup>st</sup> day of March, 1977.

*John Hoke*, Commissioner  
*Tom Scott*, Commissioner  
*Everett Patrick*, Commissioner  
 Attest: *Dorothy K. White*, County Clerk

STATE OF KANSAS, COUNTY OF SEDGWICK, SS:  
 This is to certify that this instrument was filed for record in the Register of Deeds Office at 8:00 A.M. on the 7<sup>th</sup> day of March, 1977.

*Botte J. McCart*, Register of Deeds  
*Pat Kettler*, Deputy

Entered on transfer record this 6 day of March, 1977.  
*Dorothy K. White*, County Clerk

