

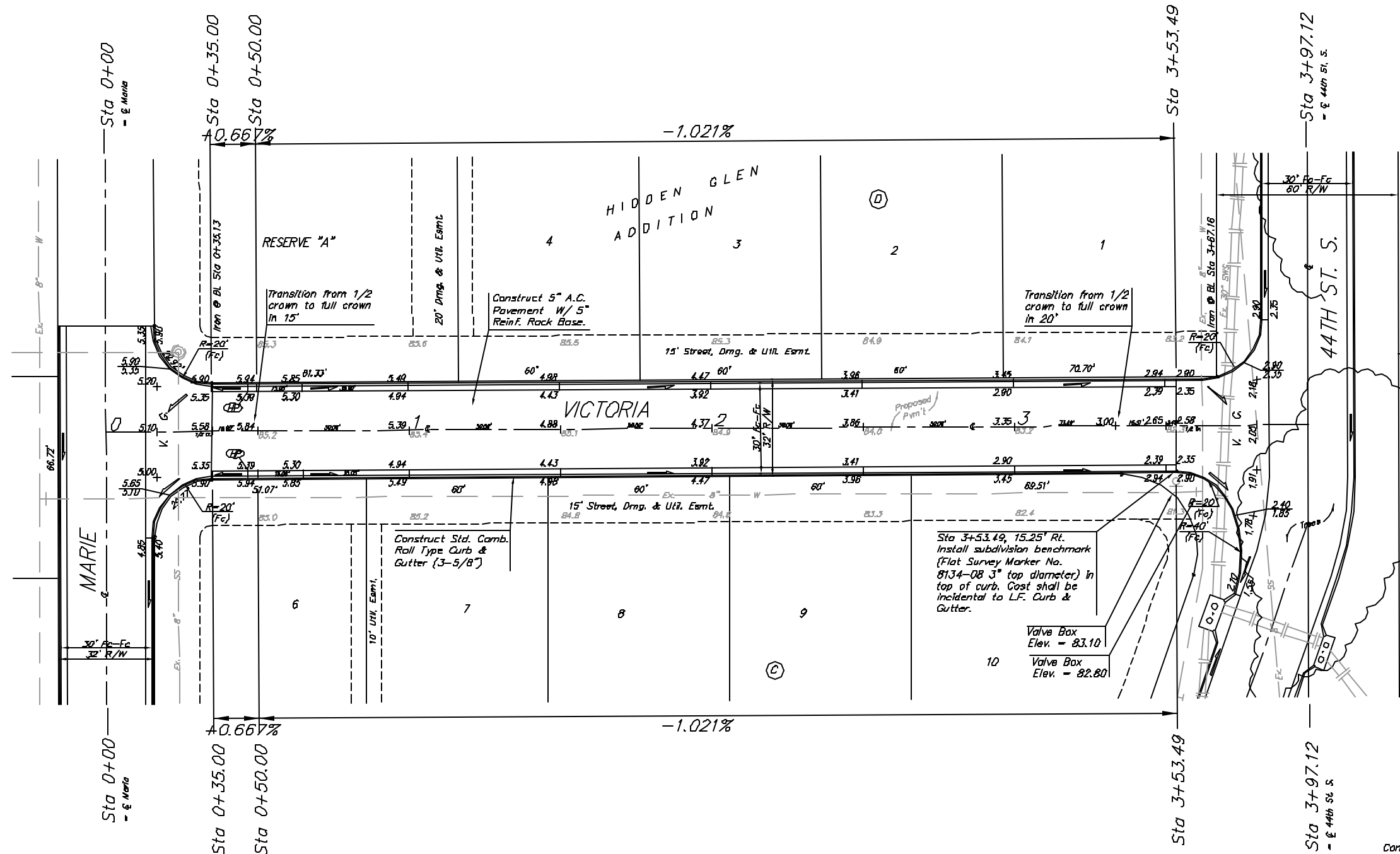
BENCHMARK:  
 "□" Top of curb, north  
 return, Northwest corner of  
 43rd and Hydraulic.  
 Elev. = 82.33

Small Railroad Spike in West  
 face of Power Pole, East of  
 44th and Hydraulic.  
 Elev. = 82.84

Railroad Spike in Light Pole,  
 Southwest corner of 45th and  
 Victoria.  
 Elev. = 84.74

P.V.I.  
 Elev. = 86.00  
 30' V.C.

Scale: 1" = 20'  
 ± = Iron



P.V.I.  
 Elev. = 86.00  
 30' V.C.

Contact Mike Tallman with the City of Wichita Engineering Department and request street numbers prior to installation of Street Name Signs.

NOTE: ROLL TYPE CURB & GUTTER TO BE CONSTRUCTED ON THE PAVEMENT SHOWN ON THIS SHEET. TOP OF CURB ELEVATIONS ARE GIVEN FOR FULL HEIGHT CURB.

<b>Baughman</b>		HIDDEN GLEN ADDITION	
Victoria		Street Paving	
Baughman Company, Inc. 515 South Union, Box 1000, Wichita, Kansas 67202-0100 313-261-1111   313-261-1112   313-261-1113   313-261-1114   313-261-1115   313-261-1116   313-261-1117   313-261-1118   313-261-1119   313-261-1120			
PROJECT NUMBER	472-83625	DATE	07/04
DESIGNER	MMS	NOTED	MSB
CHECKED		DATE	
		9 OF 19	