

**BENCHMARKS:**  
 BM #1: "□" CL face of catch basin, west side of Lot 4, Block 5. Elev. = 1352.47 MSL

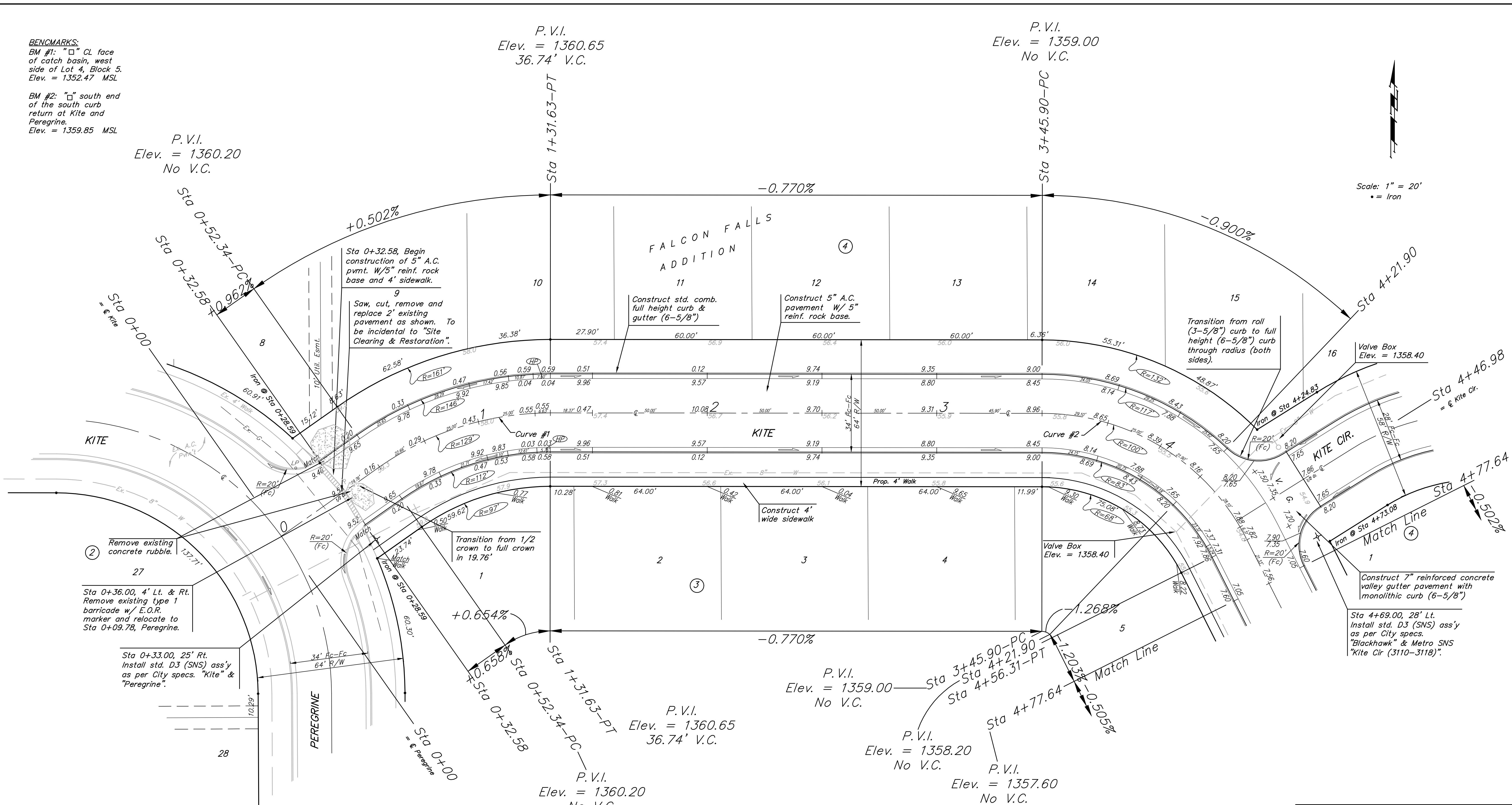
BM #2: "□" south end of the south curb return at Kite and Peregrine. Elev. = 1359.85 MSL

P.V.I.  
 Elev. = 1360.20  
 No V.C.

P.V.I.  
 Elev. = 1360.65  
 36.74' V.C.

P.V.I.  
 Elev. = 1359.00  
 No V.C.

Scale: 1" = 20'  
 • = Iron



Curve #1  
 Curve Data Based on Centerline  
 Rad. = 129' Delta = 35° 13' 07" Tangent = 40.94'  
 Arc = 79.29' L.C. = 78.05' Def./Ft. = 13.32524 Min.

Station	Arc	FACE CHORD LENGTHS		Defl.	T. Defl.
		8' Lt.	8' Rt.		
0+52.34	-	-	-	0'00"00"	0'00"00"
0+75.00	22.66'	27.02'	18.25'	5'01'57"	5'01'57"
1+00.00	25.00'	29.80'	20.12'	5'33'08"	10'35'05"
1+25.00	25.00'	29.80'	20.12'	5'33'08"	16'08'13"
1+31.63	6.63'	7.91'	5.34'	1'28'21"	17'36'33"

Curve #2  
 Curve Data Based on Centerline  
 Rad. = 100' Delta = 63° 15' 38" Tangent = 61.59'  
 Arc = 110.41' L.C. = 104.89' Def./Ft. = 17.18881 Min.

Station	Arc	FACE CHORD LENGTHS		Defl.	T. Defl.
		8' Lt.	8' Rt.		
3+45.90	-	-	-	0'00'00"	0'00'00"
3+50.00	4.10'	5.12'	3.07'	1'10'28"	1'10'28"
3+75.00	25.00'	31.17'	18.70'	7'09'43"	8'20'11"
4+00.00	25.00'	31.17'	18.70'	7'09'43"	15'29'55"
4+21.90	21.90'	27.32'	16.39'	6'16'26"	21'46'21"
4+25.00	3.10'	3.87'	2.32'	0'53'17"	22'39'38"
4+50.00	25.00'	31.17'	18.70'	7'09'43"	29'49'21"
4+56.31	6.31'	7.89'	4.73'	1'48'27"	31'37'49"

**Baughman** ENGINEERING | SURVEYING | PLANNING | LANDSCAPE ARCHITECTURE

**FALCON FALLS ADDITION - PH. II**  
**KITE**  
 STA 0+00 TO STA 4+77.64

PROJECT NUMBER: 472-83689  
 DESIGN: TMS  
 DRAWN: TMS

REVISIONS:  
 APPROVED: DATE 12/04  
 SCALE: Noted  
 SHEET: 7 OF 26

Falcon Falls/Sol 04-10-E076