

SANITARY SEWER IMPROVEMENTS TO SERVE South High School 2nd Addition

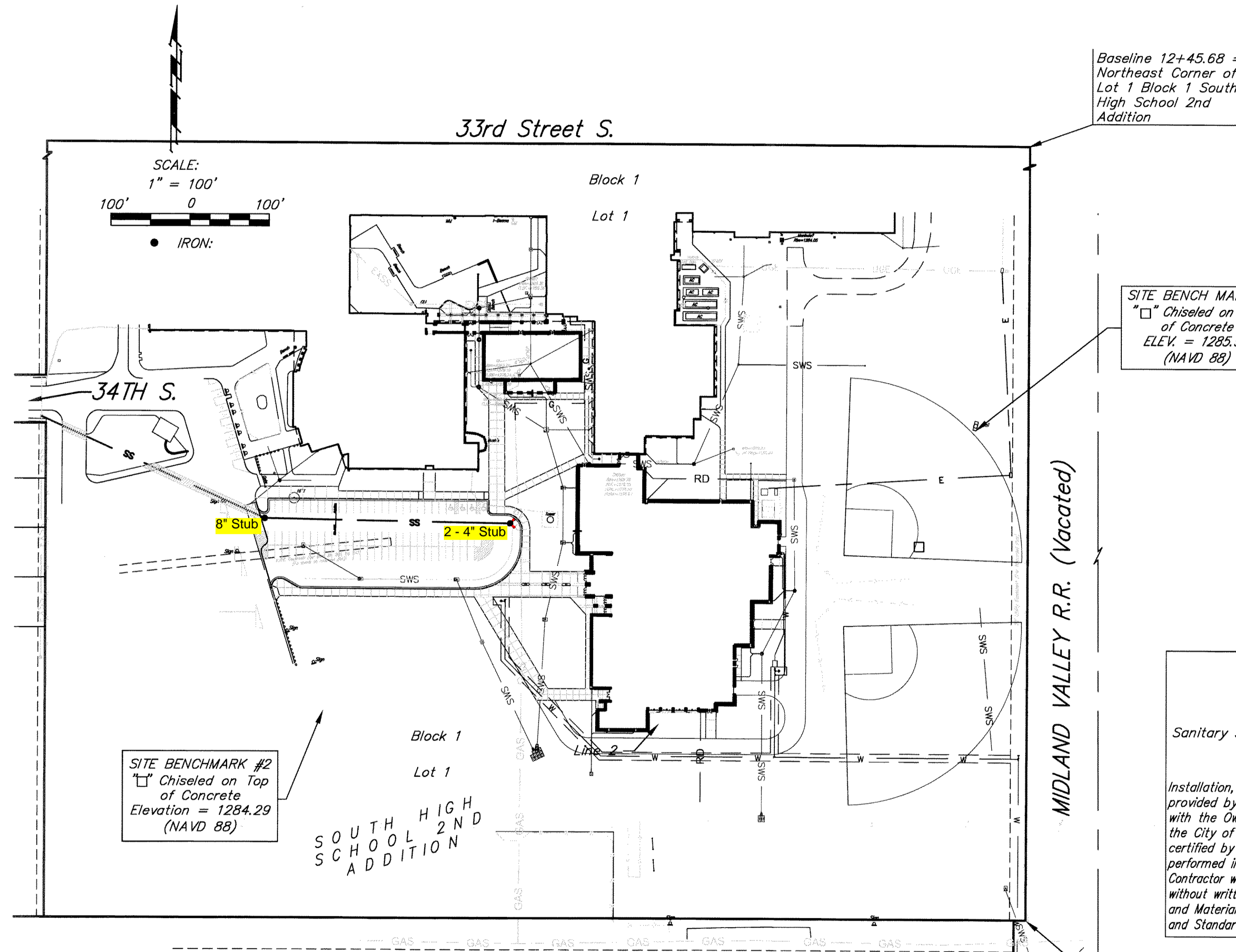
Lot 1, Block 1

Private Project: 2113 PPS (607861)

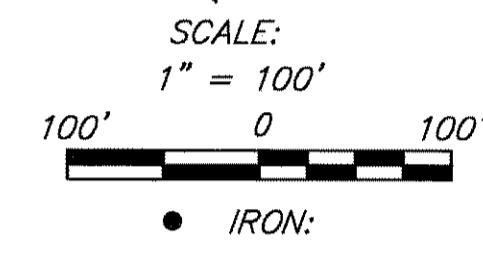
CITY OF WICHITA, KANSAS

James Armour, P.E. City Engineer

August 2011



Baseline 12+45.68 =
Northeast Corner of
Lot 1 Block 1 South
High School 2nd
Addition



SITE BENCH MARK #1
"□" Chiseled on Top
of Concrete
ELEV. = 1285.93
(NAVD 88)

SITE BENCH MARK #2
"□" Chiseled on Top
of Concrete
Elevation = 1284.29
(NAVD 88)

Benchmarks

Benchmark #1 - "□" Chiseled on Top of Concrete
ELEV. = 1285.93 (NAVD 88)

Benchmark #2 - "□" Chiseled on Top of Concrete
ELEV. = 1284.29 (NAVD 88)

Legal Description

Part of Lot 1, Block 1 of South High School 2nd Addition, in Wichita, Sedgewick County, KS.

Index

Title Sheet	1
Line 1	2-3
Manhole Detail	4

APPROVED AS NOTED
BY CITY ENGINEER OF WICHITA

Sanitary Sewers *Julian Kellman* 9-13-11

NOTE TO CONTRACTORS

Installation, inspection and testing for this project is to be provided by a Licensed Consulting Engineering Firm under contract with the Owner/Developer. Said inspection to be in accordance with the City of Wichita standard construction engineering practices and certified by a Licensed Professional Engineer. No work shall be performed in dedicated easements or public right-of-way by the Contractor without such inspection nor shall any work be commenced without written authorization by the City Engineer. All Construction and Materials shall comply with the City of Wichita Specifications and Standards (on file and available in the City Engineer's Office).

Baseline 0+00 =
Southeast Corner of
Lot 1 Block 1 South
High School 2nd
Addition

GOLD

Index

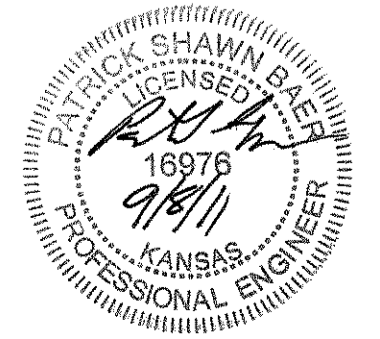
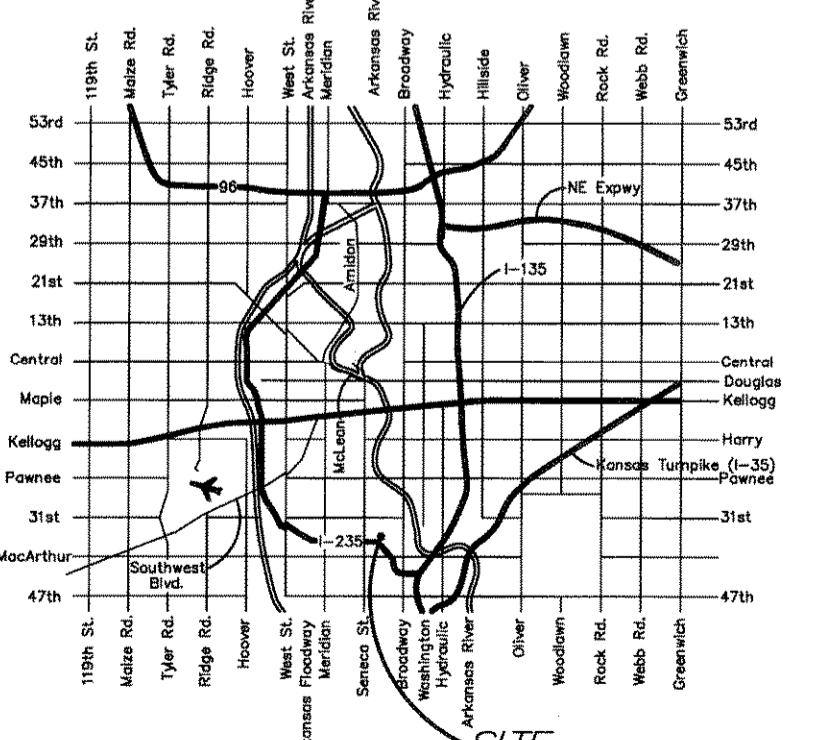
Title Sheet	1
Plan/Profile Sheet	2
Copy of Plat	3
Manhole / Ring & Cover Details	Available On Request
BMP Erosion Details	Available On Request

General Notes

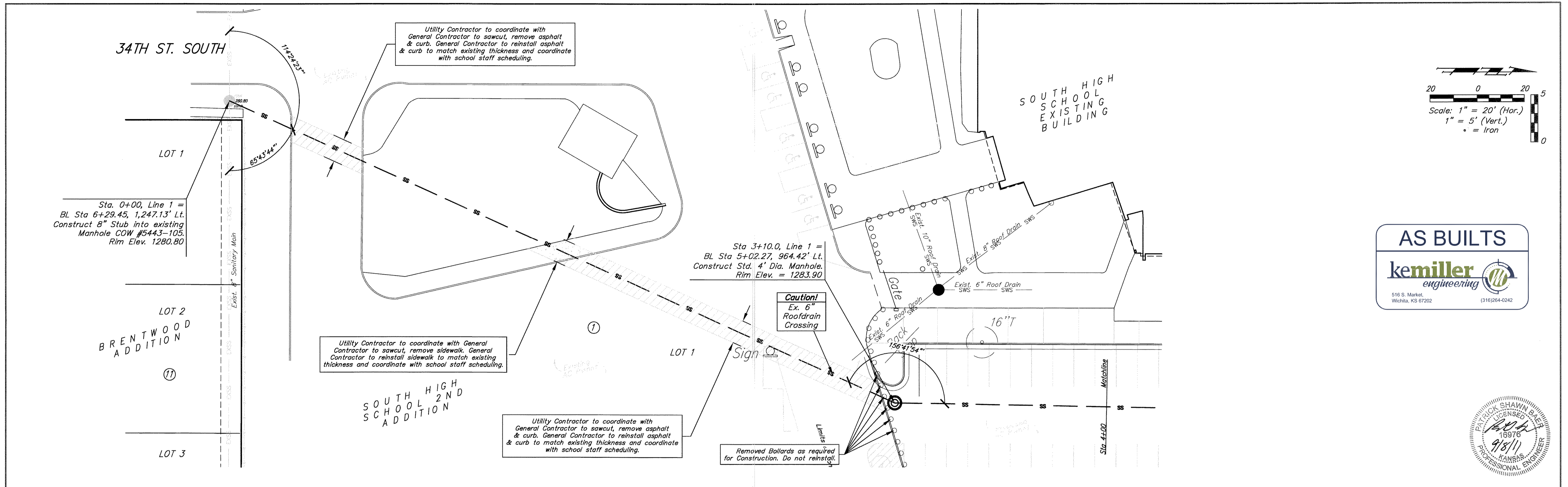
- Contractor will be required to provide notice to utility companies a minimum of forty-eight (48) hours prior to any excavation, as follows:
Kansas One-Call 687-2470
The Contractor must notify the following in case of an emergency:
Cox Communications
Kansas Gas Service Company 262-4270
Westar Energy (Electric) 1-888-482-4950
Black Hills Energy (Gas) 383-8650
Southwestern Bell Telephone Co. 1-800-303-0357
City of Wichita Water Dept. (Water) 1-800-286-8313
City of Wichita Sewer Maint. (SS) 262-6000
City of Wichita Storm Sewer Maint. 268-4090
City of Wichita Traffic Maint. 268-4034
- All disturbed R/W areas not intended for pavement or sidewalk construction shall be seeded with Kansas Premium Fescue Blend at a rate of 8 lb./1000 Sq. Ft., fertilized with a 16-20-6 ratio at a rate of 4 lb./1000 Sq. Ft., and mulched with Prairie Hay at a rate of 92 lb./1000 Sq. Ft. Mulch shall be "patted" with forks or punched into soil to reduce loss due to wind.
- Utility service lines, poles, valve boxes, meters, et cetera are to be adjusted as necessary by others prior to construction unless the plans specifically call for their adjustment by the Contractor or unless the plans specifically identify a utility to be adjusted by its owner during construction. Existing utilities and their location, as shown on the plans represent the best information obtainable for design and shall be field verified. The contractor will be required to work around existing utilities within the right-of-way which do not conflict with proposed construction.
- Contractor shall furnish the inspector with a copy of the manufacturer's certification for any pipe used on this project after completion of pipe installation. The engineer will not certify the project to the city until pipe certification has been received.
- Properties within the project limits may have underground sprinkler systems which conflict with new construction. Contractor will be required to remove such improvements should they not be removed by their owner at the time of construction. The Contractor will be required to salvage all sprinkler heads and/or valves and give such material to their owner. Portions of underground sprinkler systems not in conflict with new construction shall be protected from damage and shall remain in place. All work in connection with underground sprinkler systems shall be considered as subsidiary to the contract pay items of work.
- Contractor shall not start work on the project until the project inspector is assigned to the project and is present on the site. Contractor shall not start on the project until all necessary bonds and permits have been obtained. Bonds may include but are not limited to Statutory, Performance & Maintenance. Any work done without inspection will be required to be uncovered for inspection.
- Rubble from the removal of miscellaneous structures and excess excavation which is to be wasted shall be disposed of on sites to be provided by the Contractor. These sites shall be approved by the Engineer as to suitability, appearance and site location. Locations that, in the opinion of the Engineer, will leave an unsightly appearance will not be approved. All disposal sites must be approved by the Kansas Department of Health and Environment. Material either stockpiled or disposed of in a flood plain would require a Kansas State Board of Agriculture permit. Any material dumped in waters of the United States or wetlands is subject to U.S. Corps. of Engineers permitting regulations. Any material buried or stockpiled beyond approved construction limits would require additional archaeological investigations unless buried in a previously approved borrow location.
- All sanitary sewer lines and appurtenances shall be installed in accordance with the most recent edition of City of Wichita, Kansas Standard Specifications for the Construction of City Projects.

Stubs
Release Date: 1/12/2012
APRosas 1/17/2012

AS BUILTS	
Contractor: Mies Construction 1/12/2012	Project Inspector: Larry Gann kemiller engineering 515 S. Market Wichita, KS 67202 (316)264-0242



Baughman Company, P.A. 315 Ellis St. Wichita, KS 67211 P 316-262-7271 F 316-262-0149
ENGINEERING | SURVEYING | PLANNING | LANDSCAPE ARCHITECTURE

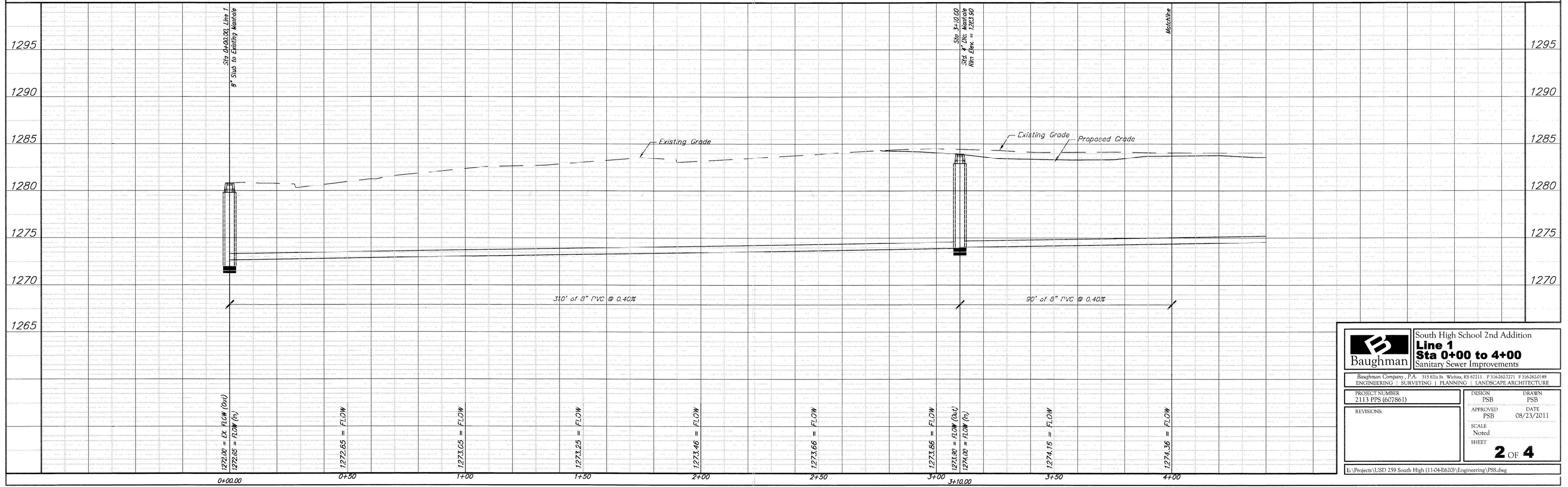
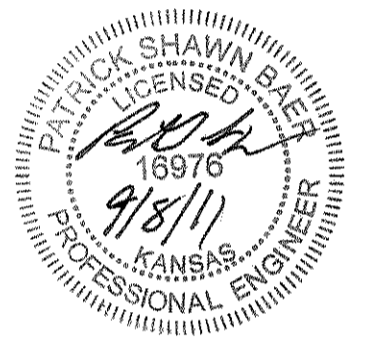


AS BUILTS

kemiller
engineering

516 S. Market,
Wichita, KS 67202

(316)264-0242

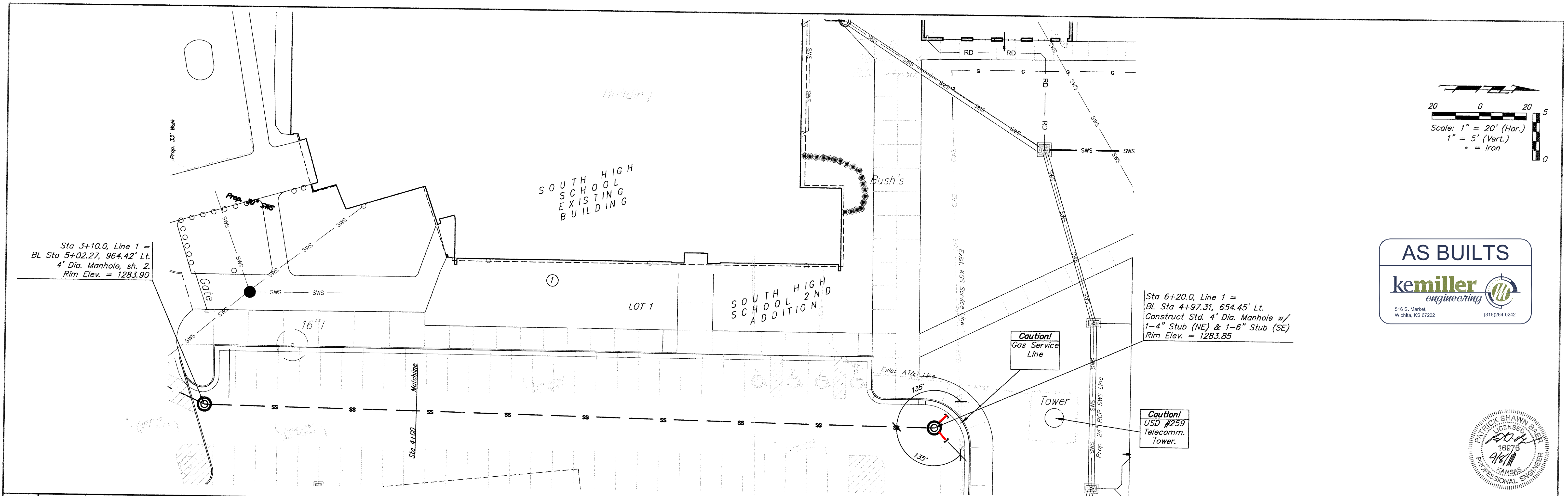
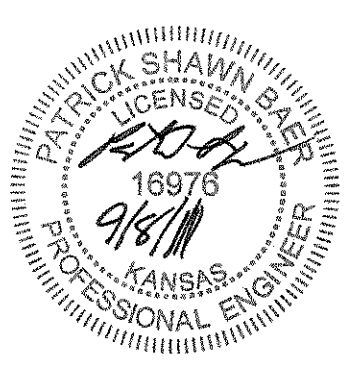
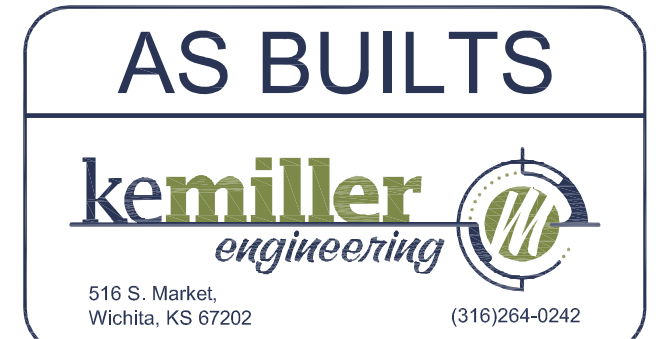
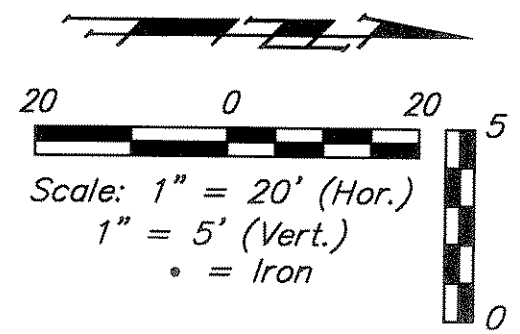


Baughman South High School 2nd Addition
Line 1
Sta 0+00 to 4+00
Sanitary Sewer Improvements

Baughman Company, P.A. 315 Ellis St. Wichita, KS 67211 P 316-262-2271 F 316-262-0149
ENGINEERING | SURVEYING | PLANNING | LANDSCAPE ARCHITECTURE

PROJECT NUMBER 2113 PPS (607861)	DESIGN PSB	DRAWN PSB
REVISIONS:	APPROVED PSB	DATE 08/23/2011
	SCALE Noted	SHEET 2 OF 4

E:\Projects\USD 259 South High (11-04-E620)\Engineering\PSB.dwg

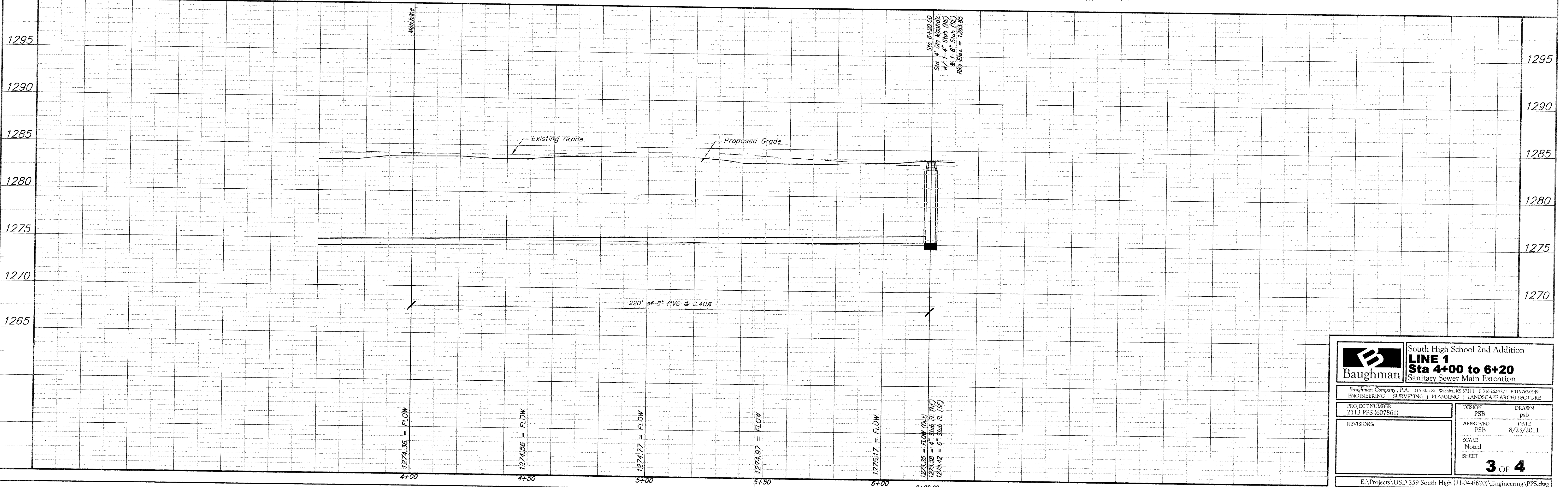


Sta 3+10.0, Line 1 =
BL Sta 5+02.27, 964.42' Lt.
4' Dia. Manhole, sh. 2.
Rim Elev. = 1283.90

Sta 6+20.0, Line 1 =
BL Sta 4+97.31, 654.45' Lt.
Construct Std. 4' Dia. Manhole w/
1-4" Stub (NE) & 1-6" Stub (SE)
Rim Elev. = 1283.85

Caution!
Gas Service
Line

Caution!
USD #259
Telecomm.
Tower.



Sta 6+20.00
4' Dia. Manhole
w/ 1-4" Stub (NE)
& 1-6" Stub (SE)
Rim Elev. = 1283.85

B Baughman		South High School 2nd Addition LINE 1 Sta 4+00 to 6+20 Sanitary Sewer Main Extension	
Baughman Company, P.A. 315 Ellis St. Wichita, KS 67211 P 316-262-7271 F 316-262-0149 ENGINEERING SURVEYING PLANNING LANDSCAPE ARCHITECTURE			
PROJECT NUMBER 2113 PPS (607861)	DESIGN PSB	DRAWN psb	APPROVED PSB
REVISIONS:	DATE 8/23/2011	SCALE Noted	SHEET 3 OF 4
E:\Projects\USD 259 South High (11-04-E620)\Engineering\PPS.dwg			