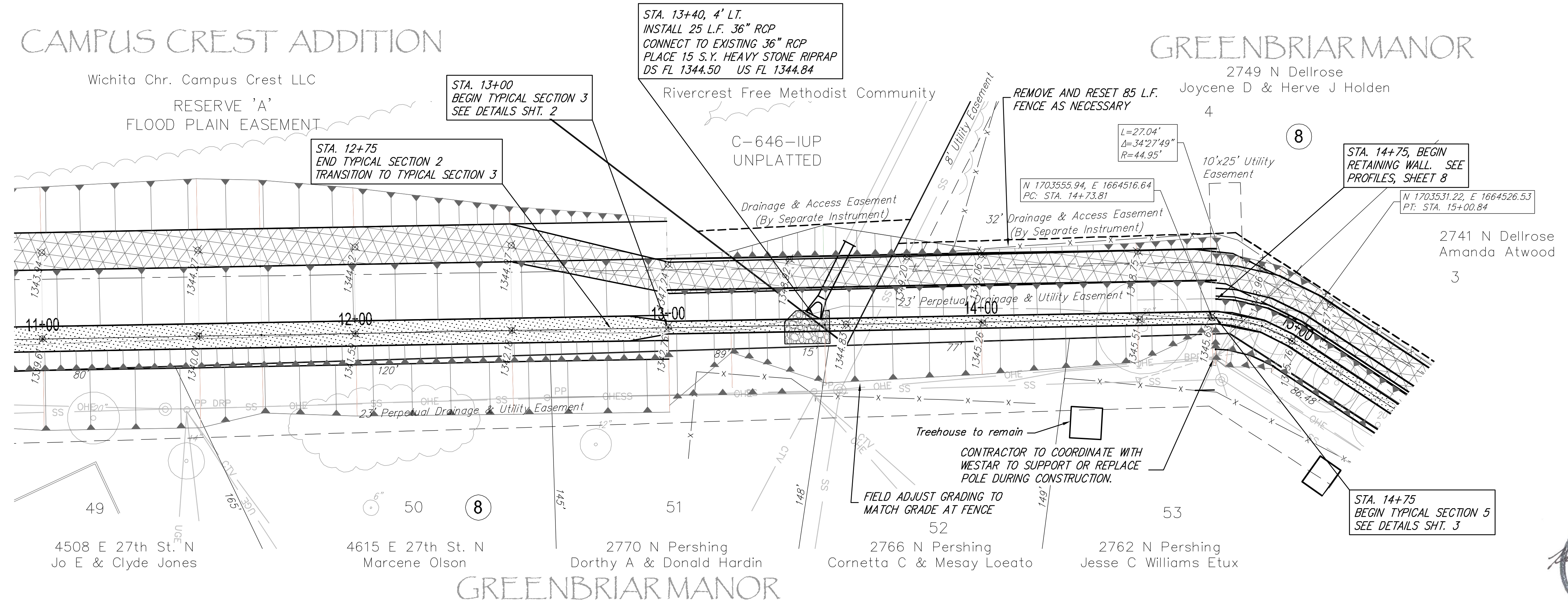


CAMPUS CREST ADDITION

Wichita Chr. Campus Crest LLC
RESERVE 'A'
FLOOD PLAIN EASEMENT

GREENBRIAR MANOR

2749 N Dellrose
Joycene D & Herve J Holden



4508 E 27th St. N
Jo E & Clyde Jones

4615 E 27th St. N
Marcene Olson

2770 N Pershing
Dorothy A & Donald Hardin

2766 N Pershing
Cornetta C & Mesay Loeat

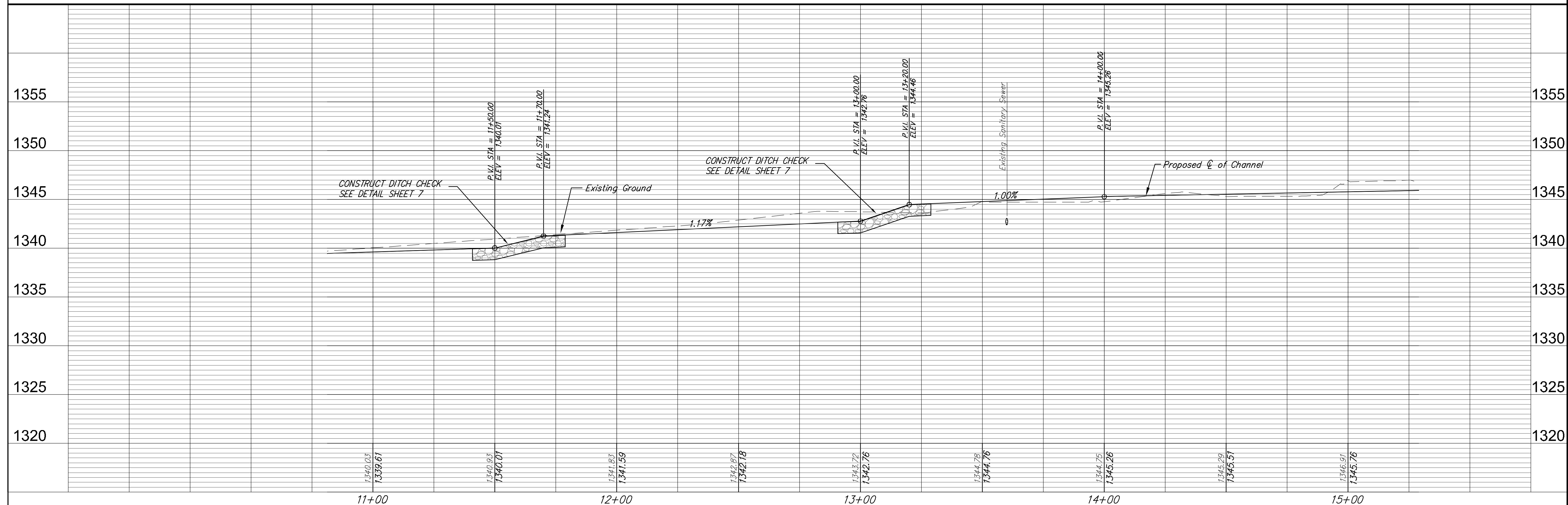
2762 N Pershing
Jesse C Williams Etux

2741 N Dellrose
Amanda Atwood

GREENBRIAR MANOR



Ruggles & Bohm, P.A.
Engineering, Surveying, Land Planning
1318 S. 44th St., Suite 203
Wichita, Kansas 67203
www.rba.com
E-mail: RB@rba.com



PROJECT NUMBER: .
DRAWING FILE: .

DESIGN: KWL
DRAWN: RA
CHECKED: JKH
DATE: Jan. 11, 2012

REVISIONS:
REVIEW: .
REVIEW: .

CHANNEL IMPROVEMENTS
GREENBRIAR CHANNEL
WICHITA, KANSAS

RB JOB: 38300
SHEET: 6
OF: 26