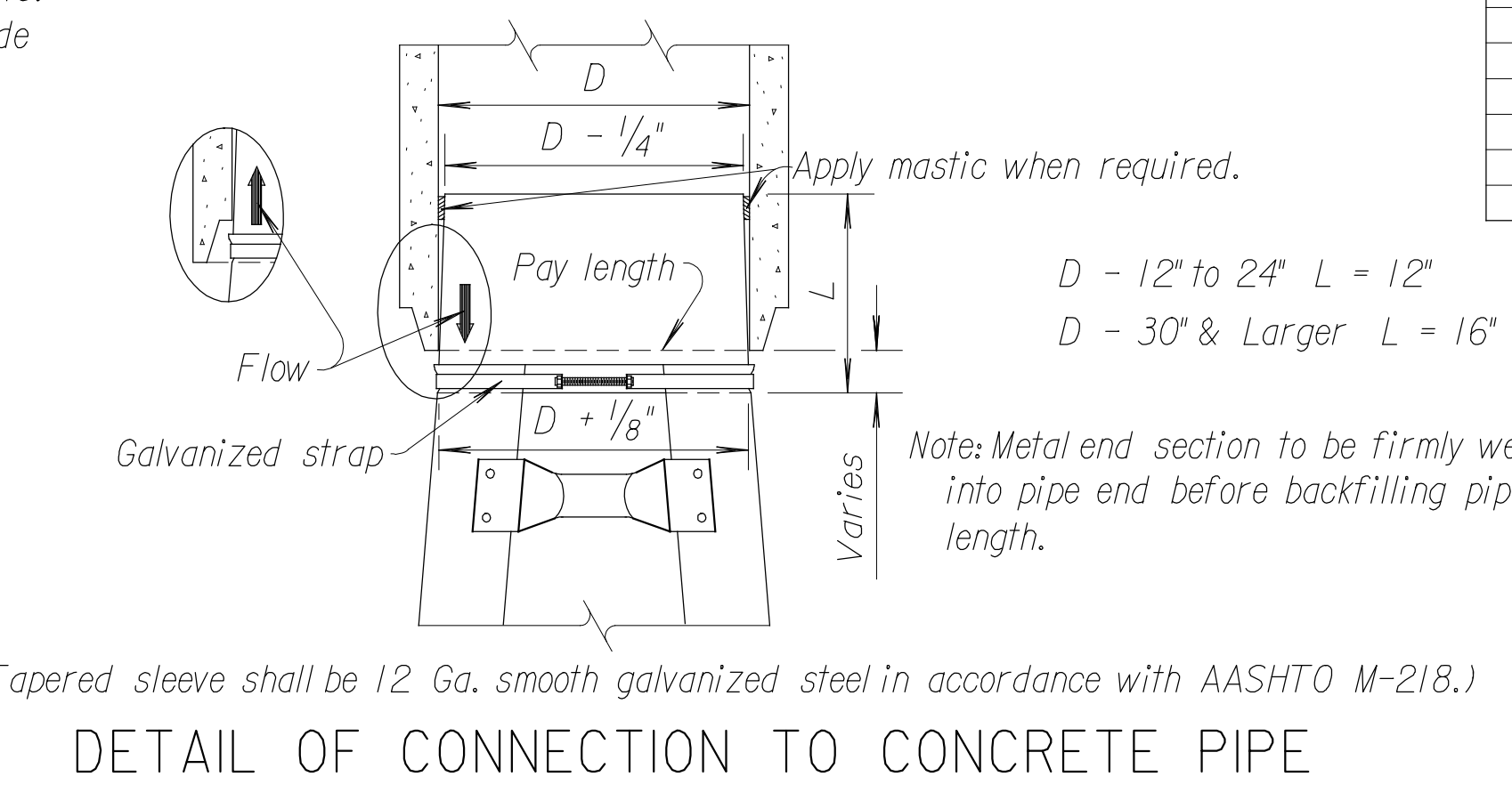
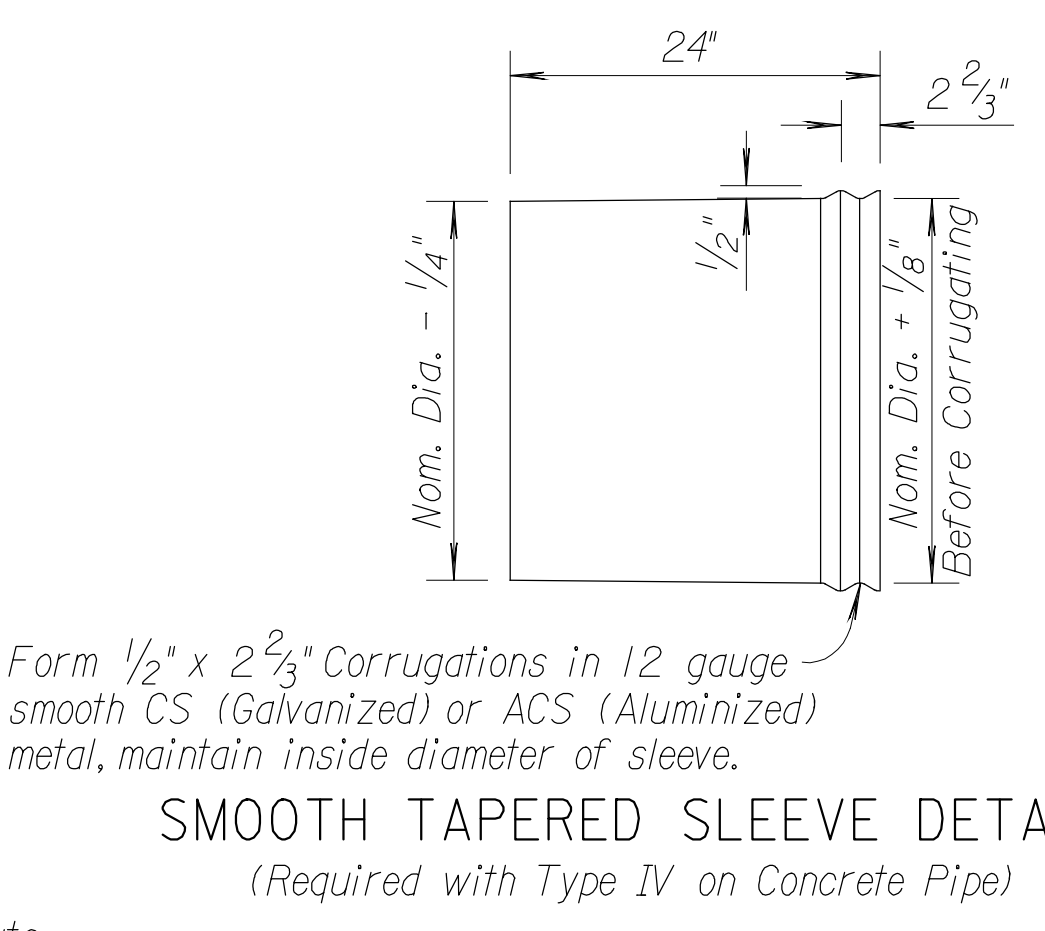
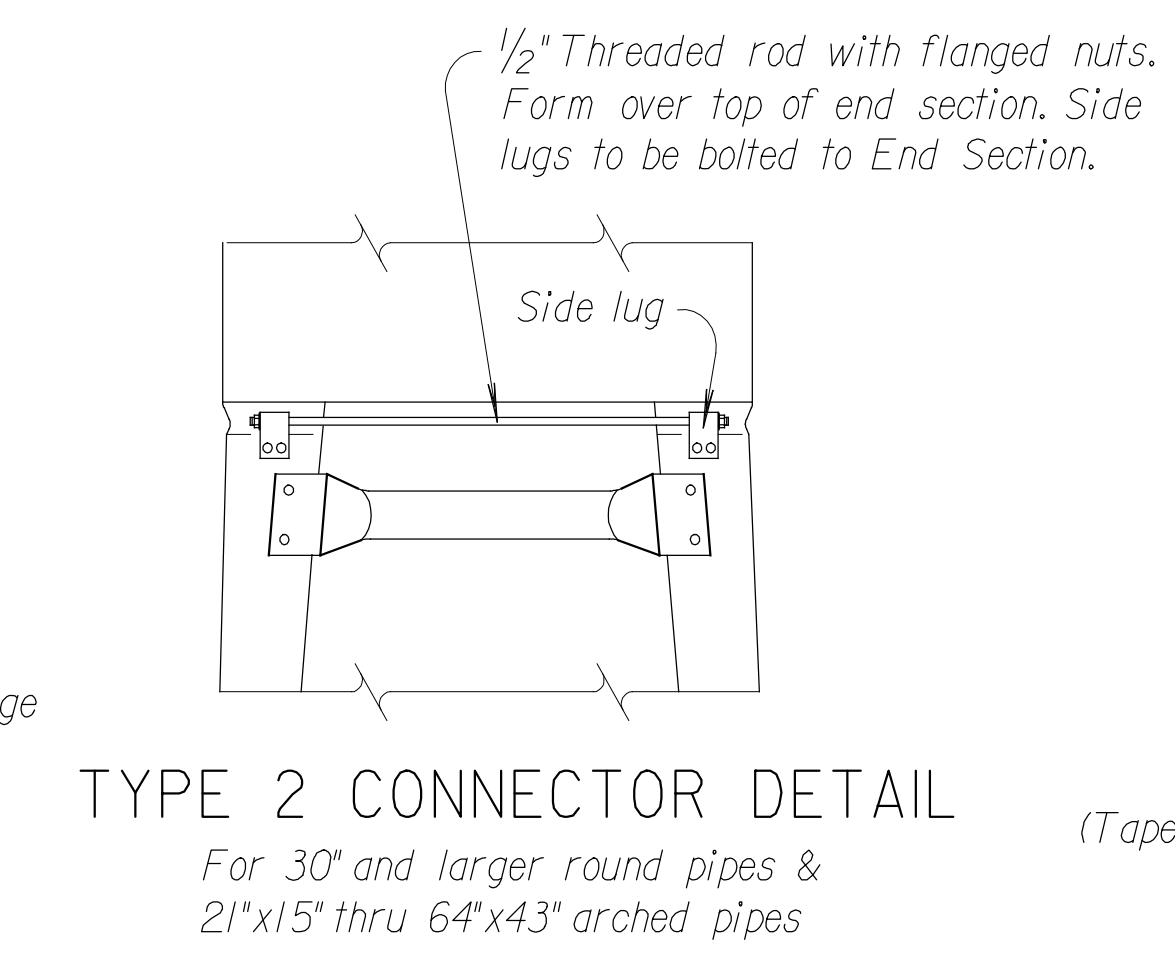
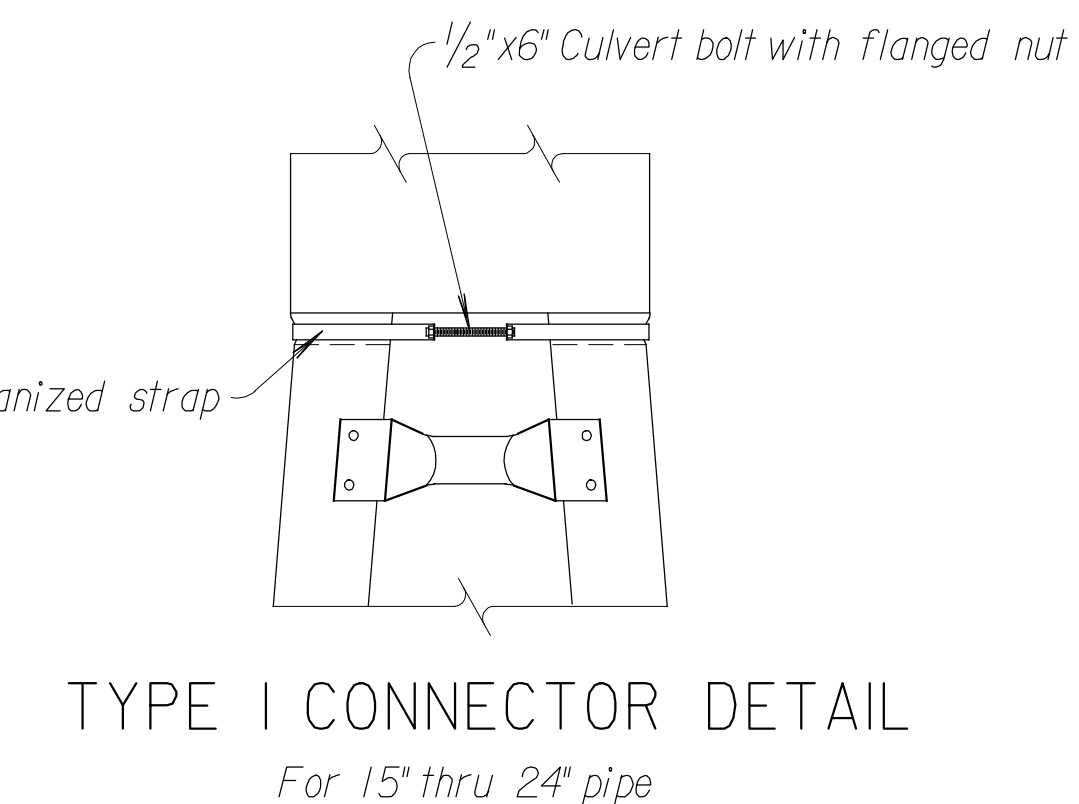
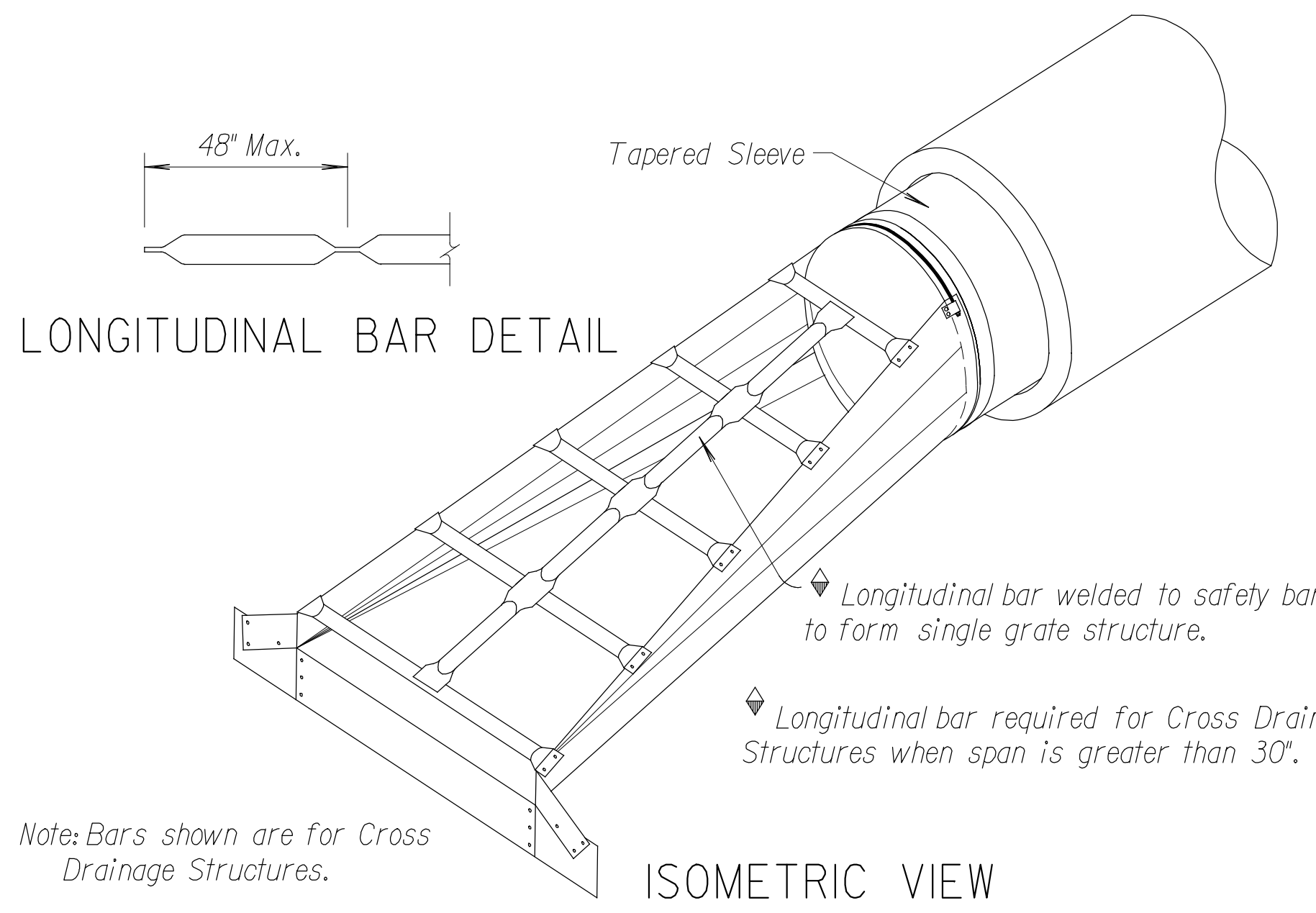
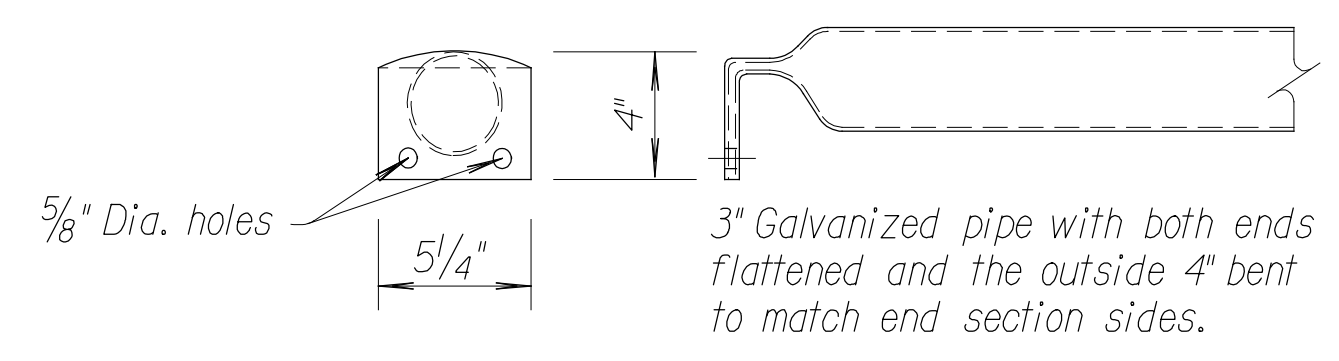
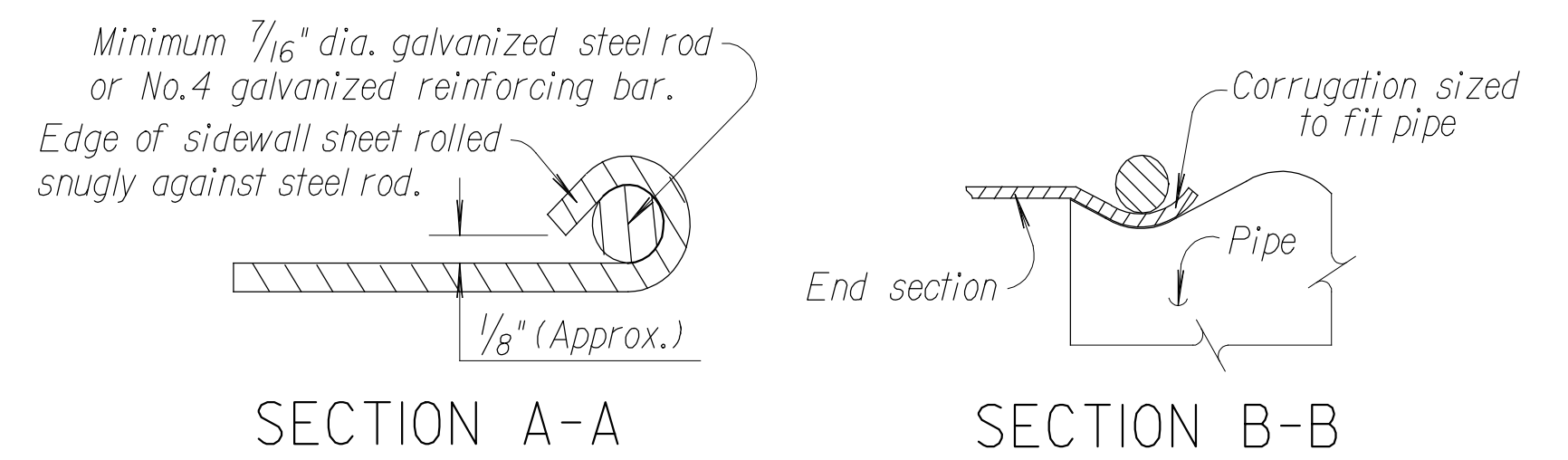
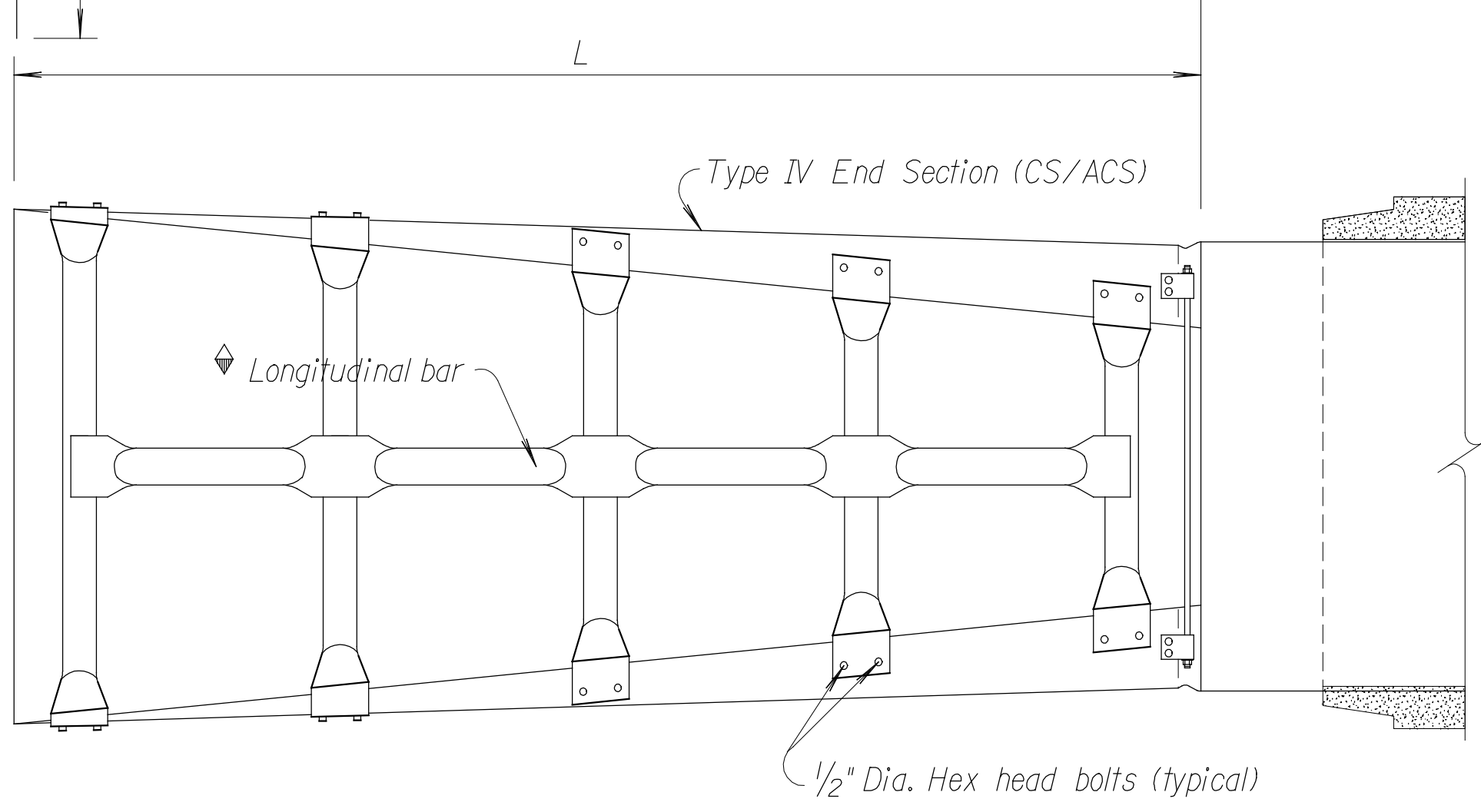
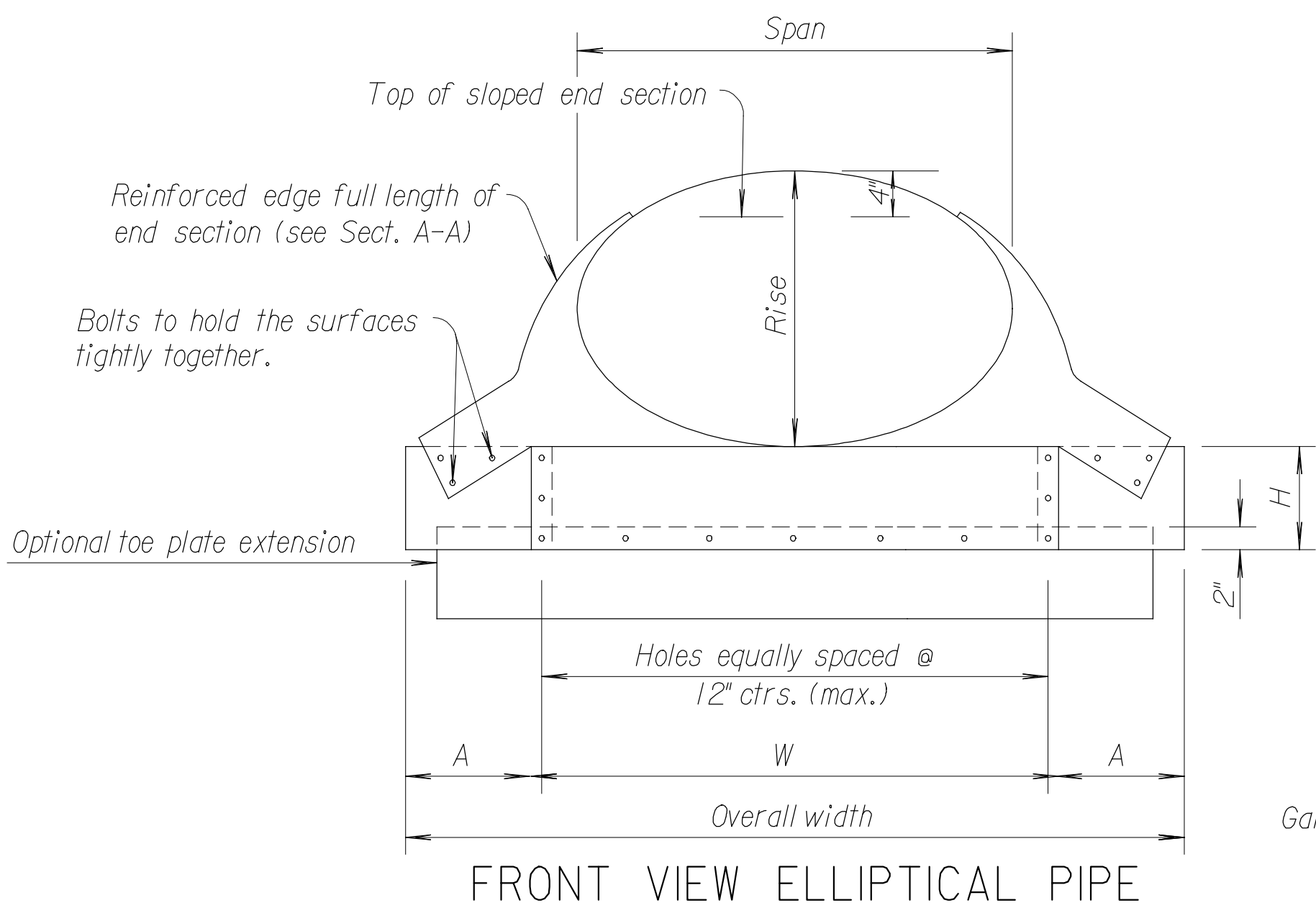
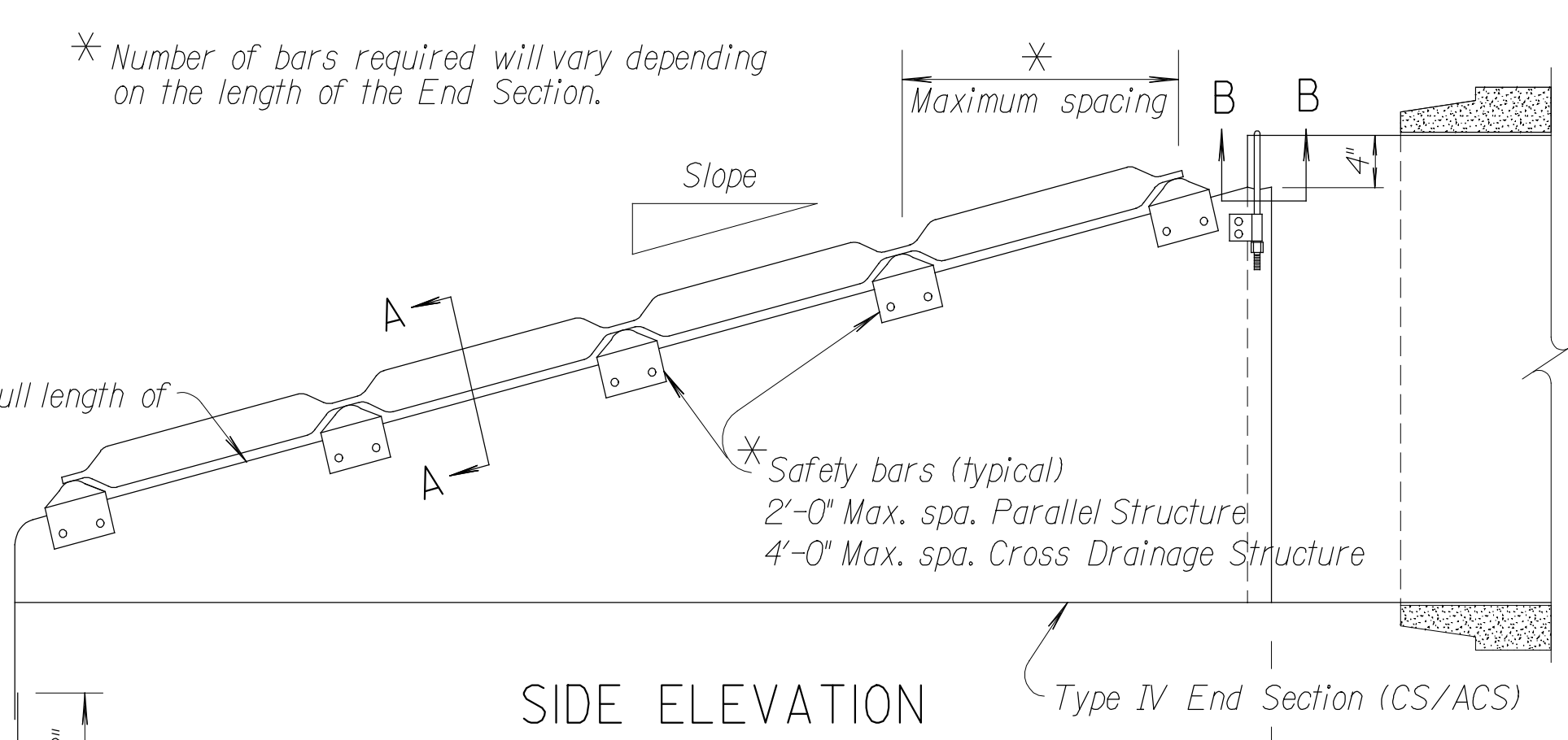
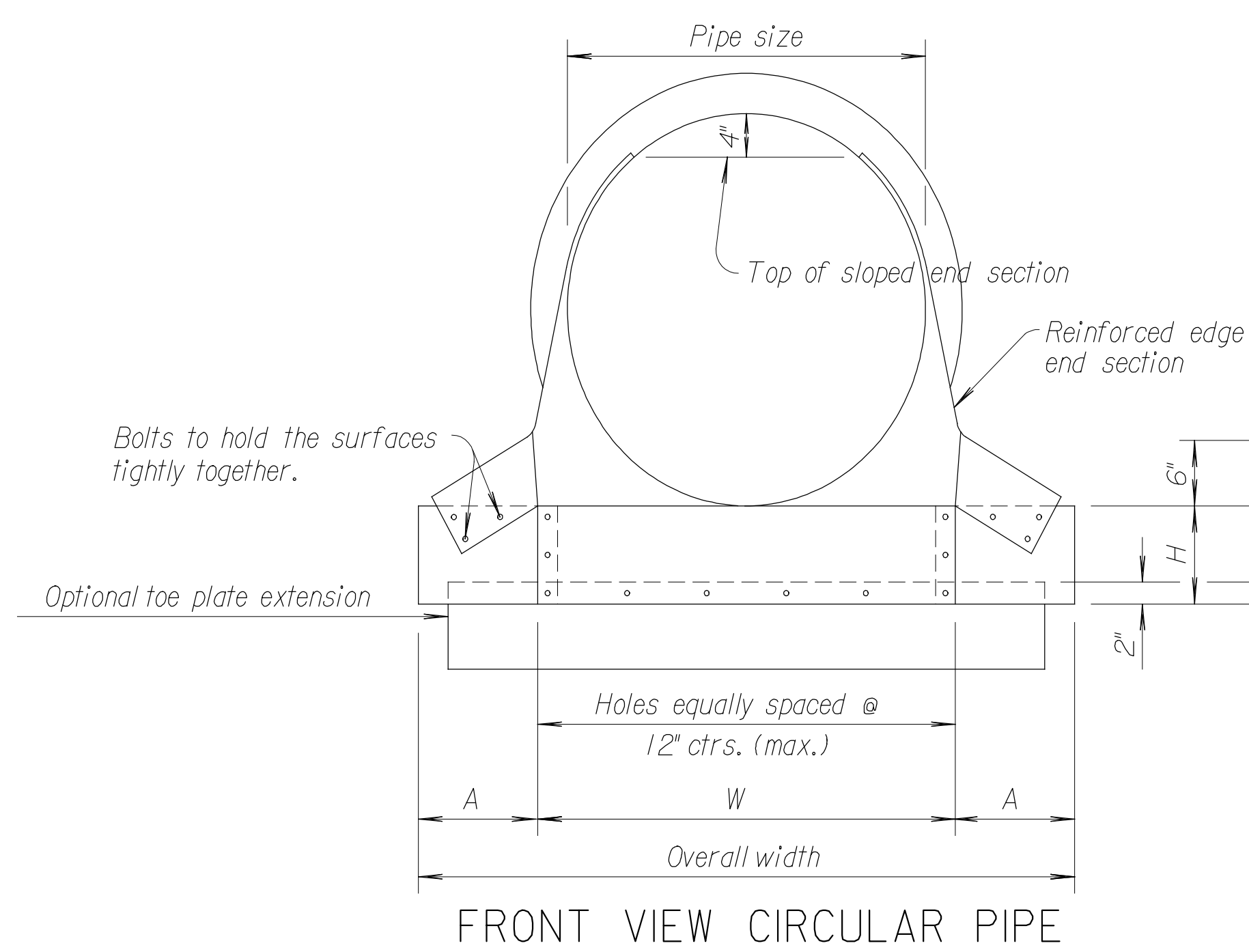


GENERAL NOTES

The culvert type shall meet the KDOT Pipe Policy & Standard Specifications. End sections and tapered sleeves shall be fabricated from CS (Galvanized) or ACS (Aluminized) steel meeting the requirements of the Standard Specifications. End section and required tapered sleeve are to be matching metal type. When required optional toe plate extension shall be punched and bolted to end section apron lip with 3/8" diameter galvanized bolts. Steel for toe plate extension shall be same gauge and metal type as end section. Dimensions shall be overall width less 6" by 8" high. Safety bars shall be fabricated from steel pipe meeting the requirements of ASTM A-53 Schedule 40 Specifications. Safety bars shall be hot dipped galvanized after fabrication. Installation shall be performed in accordance with the Standard Specifications. All work and materials required for construction and installation of safety slope end section shall be included in the bid item "End Section (Type IV)".



Eqv. Dia. (In.)	Nom. W.W. Area Sq. Ft.	(Inches)		Min. Thick. In.	Gage	Dimensions (Inches)				Slope	Length (In.)	Slope	Length (In.)
		Span	Rise			A	H	W	Overall Width				
18	1.8	23	14	.064	16	8	6	29	45	4:1	16	6:1	24
24	3.3	30	19	.064	16	8	6	36	52	4:1	36	6:1	54
27	4.1	34	22	.079	14	12	9	40	64	4:1	48	6:1	72
30	5.1	38	24	.079	14	12	9	44	68	4:1	56	6:1	84
33	6.3	42	27	.109	12	12	9	48	72	4:1	68	6:1	102
36	7.4	45	29	.109	12	16	12	51	83	4:1	76	6:1	114
42	10.2	53	34	.109	12	16	12	59	91	4:1	96	6:1	144
48	12.9	60	38	.109	12	16	12	66	98	4:1	112	6:1	168
54	16.6	68	43	.109	12	16	12	74	106	4:1	132	6:1	198

Pipe Dia. (In.)	Min. Gauge Ends	Dimensions in Inches				L Dimensions			
		A 1" Tol.	H 1" Tol.	W 2" Tol.	Overall Width	Slope	Length (In.)	Slope	Length (In.)
15"	16	8	6	21	37	4:1	20	6:1	30
18"	16	8	6	24	40	4:1	32	6:1	48
21"	16	8	6	27	43	4:1	44	6:1	66
24"	16	8	6	30	46	4:1	56	6:1	84
30"	12	12	9	36	60	4:1	80	6:1	120
36"	12	12	9	42	66	4:1	104	6:1	156
42"	12	16	12	48	80	4:1	128	6:1	192
48"	12	16	12	54	86	4:1	152	6:1	228
54"	12	16	12	60	92	4:1	176	6:1	264
60"	12	16	12	66	98	4:1	200	6:1	300

1	2-5-08	Added ref. to KDOT Pipe Policy	S.W.K.	J.O.B.
NO.	DATE	REVISIONS	BY	APP'D

KANSAS DEPARTMENT OF TRANSPORTATION

**TYPE IV END SECTION FOR CIRCULAR AND ELLIPTICAL PIPES (REINFORCED CONCRETE PIPE)**

RD664A

FHWA APPROVAL 6-27-08 APP'D. James O. Brewer  
DESIGNED BY: BOWSER  
DESIGN CK. BY: KING

APPROVED	DESIGNED	DETAILED
QUANTITIES	DESIGN CK.	DETAIL CK.
QUANCK.	TRACE CK.	TRACE CK.

Model: \*\*\*\*\*  
Pen Tablet: FullSize.pen  
Plotted on: Wednesday, November 26, 2008 10:31 AM  
By: ames1-dgh  
Design: File name: J:\43244\CD\Detail\KDOT\_664.dgn