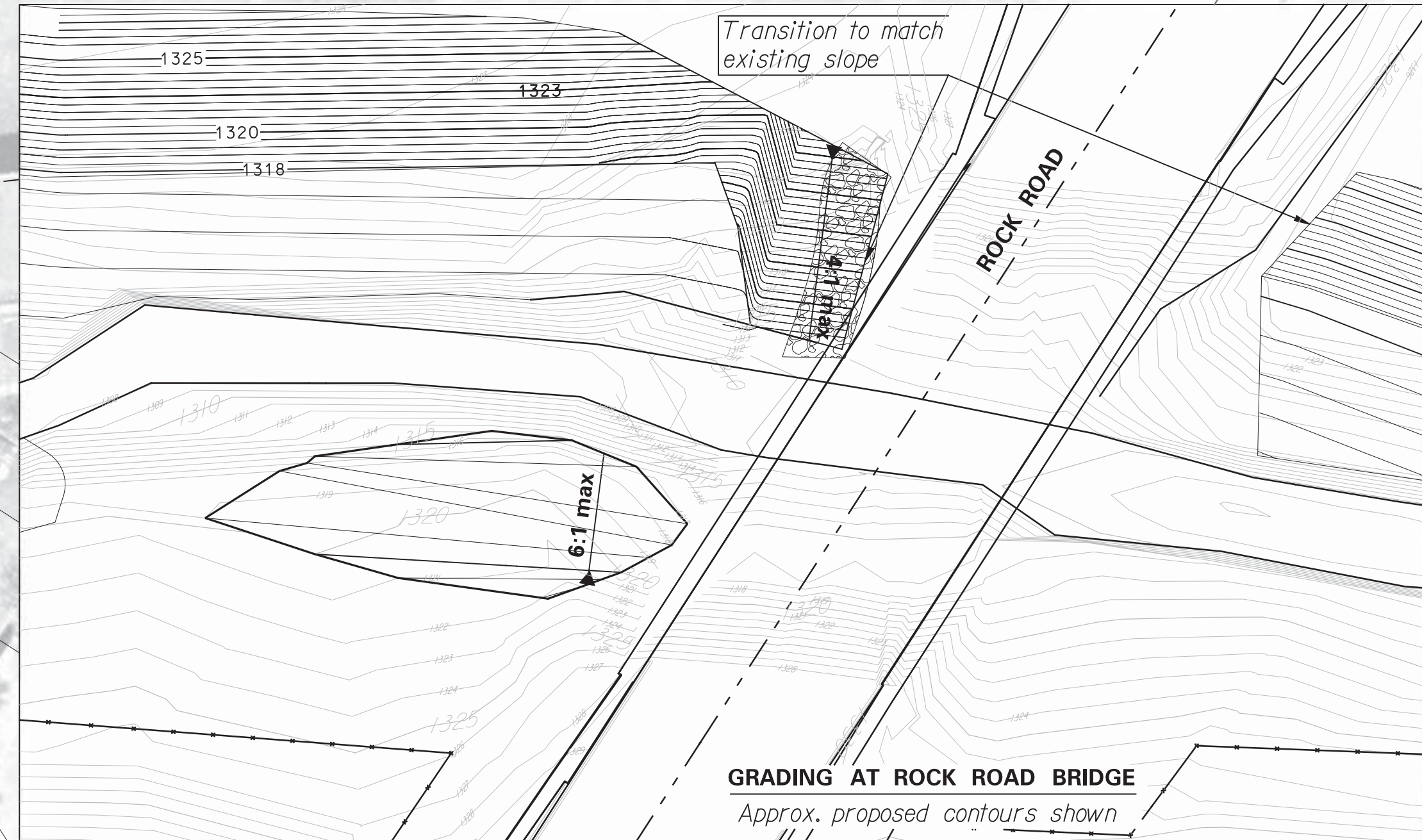
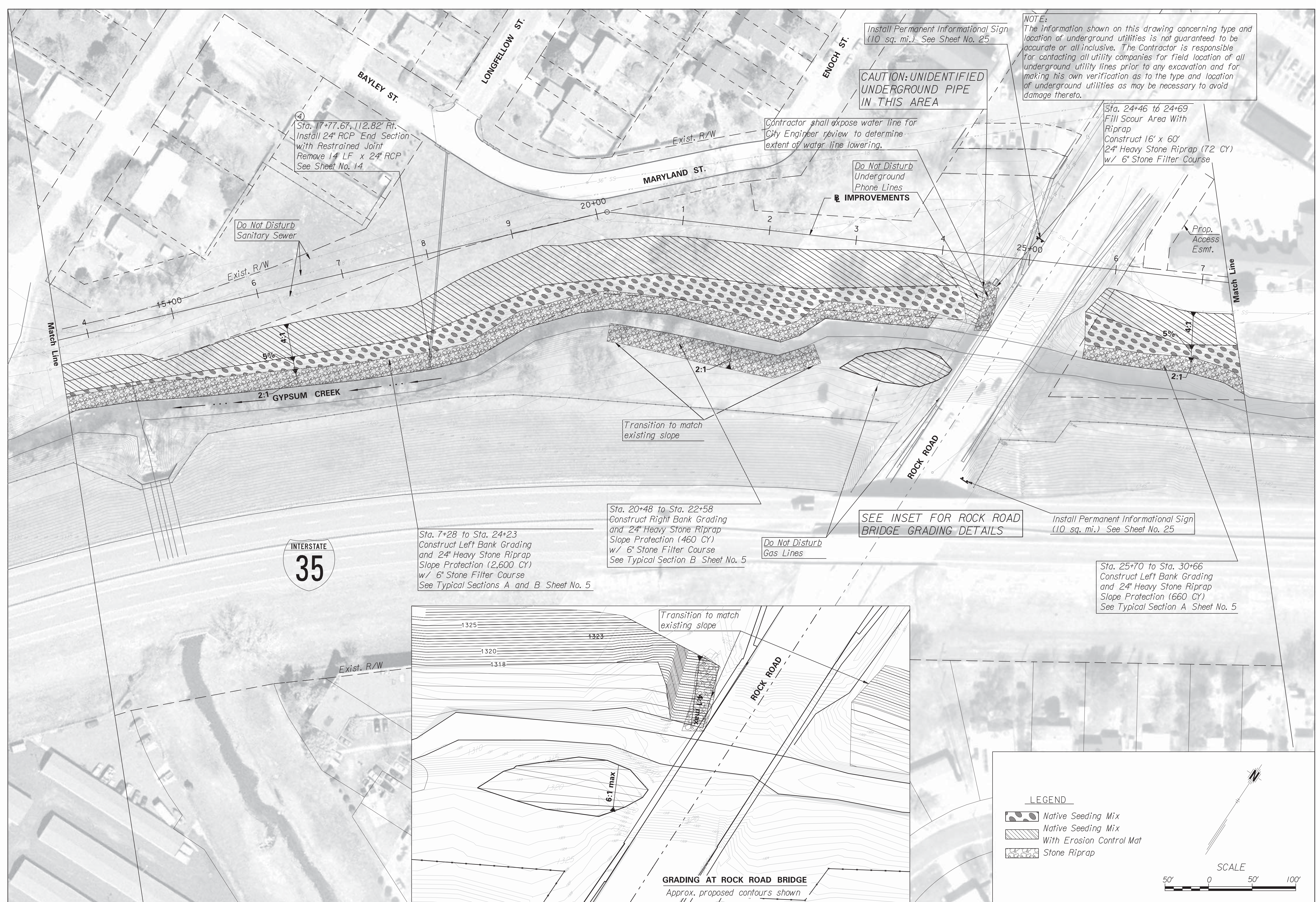


APPROVED	DESIGNED	DETAILED
DESIGN CK.	QUANTITIES	TRACE CK.
QUANCK.		

Plotted on: Friday, December 16, 2011 10:13 AM
 By: Jwoolard
 Design File Name: \\ovpww00\Jobs\43244\CD\Plan\Gyp_Arm_Plan_02.dgn



LEGEND

- Native Seeding Mix
- Native Seeding Mix With Erosion Control Mat
- Stone Riprap

SCALE
 50' 0 50' 100'

Install Permanent Informational Sign (10 sq. mi.) See Sheet No. 25

CAUTION: UNIDENTIFIED UNDERGROUND PIPE IN THIS AREA

NOTE:
 The information shown on this drawing concerning type and location of underground utilities is not guaranteed to be accurate or all inclusive. The Contractor is responsible for contacting all utility companies for field location of all underground utility lines prior to any excavation and for making his own verification as to the type and location of underground utilities as may be necessary to avoid damage thereto.

Contractor shall expose water line for City Engineer review to determine extent of water line lowering.

Do Not Disturb Underground Phone Lines

Sta. 24+46 to 24+69
 Fill Scour Area With Riprap
 Construct 16' x 60'
 24" Heavy Stone Riprap (72 CY)
 w/ 6" Stone Filter Course

Sta. 17+77.67, 112.82' Rt.
 Install 24" RCP End Section with Restrained Joint
 Remove 14 LF x 24" RCP
 See Sheet No. 14

Do Not Disturb Sanitary Sewer

SEE INSET FOR ROCK ROAD BRIDGE GRADING DETAILS

Install Permanent Informational Sign (10 sq. mi.) See Sheet No. 25

Sta. 20+48 to Sta. 22+58
 Construct Right Bank Grading and 24" Heavy Stone Riprap Slope Protection (460 CY) w/ 6" Stone Filter Course
 See Typical Section B Sheet No. 5

Sta. 7+28 to Sta. 24+23
 Construct Left Bank Grading and 24" Heavy Stone Riprap Slope Protection (2,600 CY) w/ 6" Stone Filter Course
 See Typical Sections A and B Sheet No. 5

Sta. 25+70 to Sta. 30+66
 Construct Left Bank Grading and 24" Heavy Stone Riprap Slope Protection (660 CY)
 See Typical Section A Sheet No. 5

SHEET NO.	8	TOTAL SHEETS	76
7450 W 130th St., Suite 400 Overland Park, KS 66213 (913) 491-9333			
HNTB			
CITY OF WICHITA, KANSAS			
WICHITA			
NO.	1	DATE	
BY	APPD	REVISIONS	
GYPSUM CREEK BANK STABILIZATION PLAN SHEET 2			