

# SANITARY SEWER ABANDONMENT & MANHOLE TO SERVE Mike Steven Motors Addition

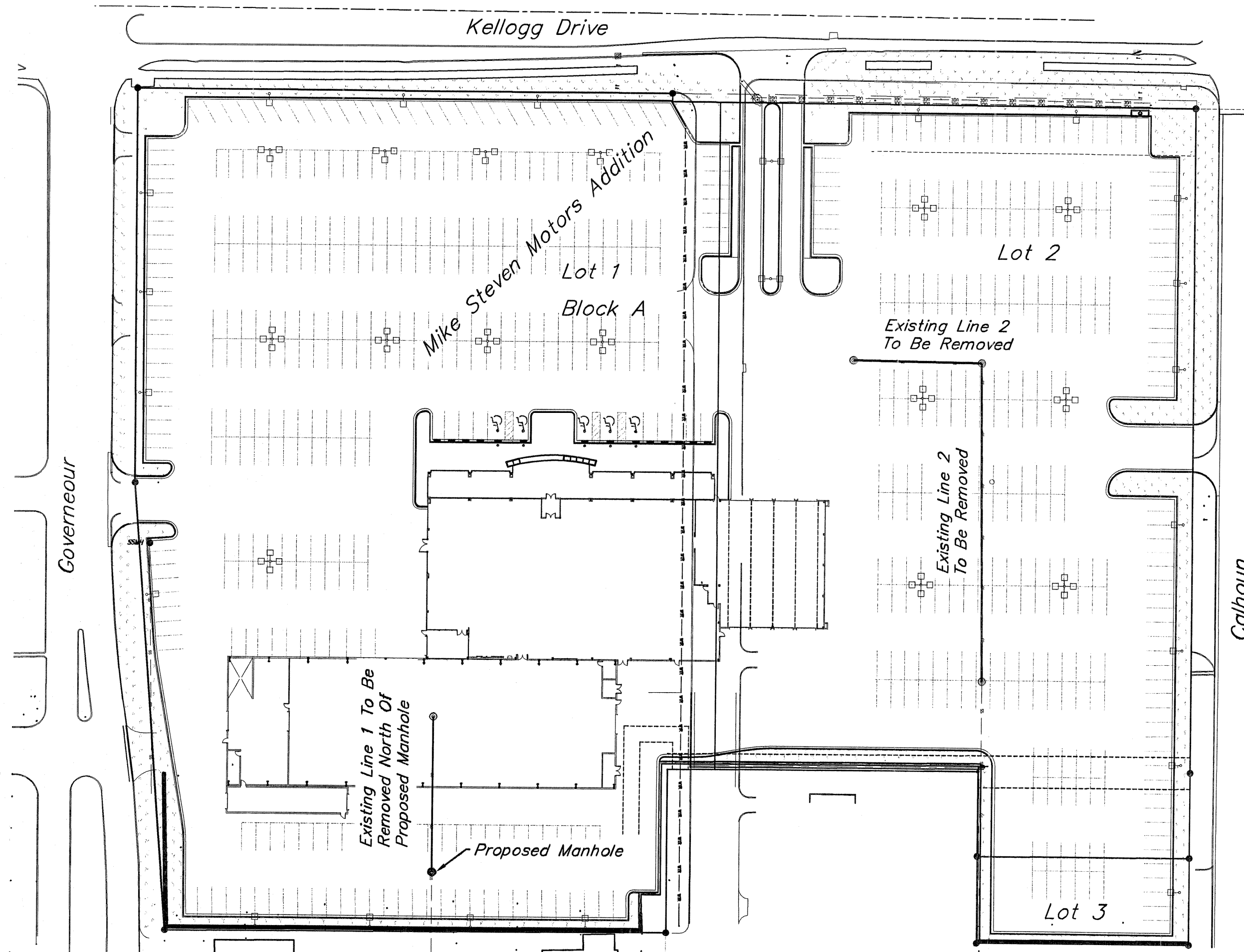
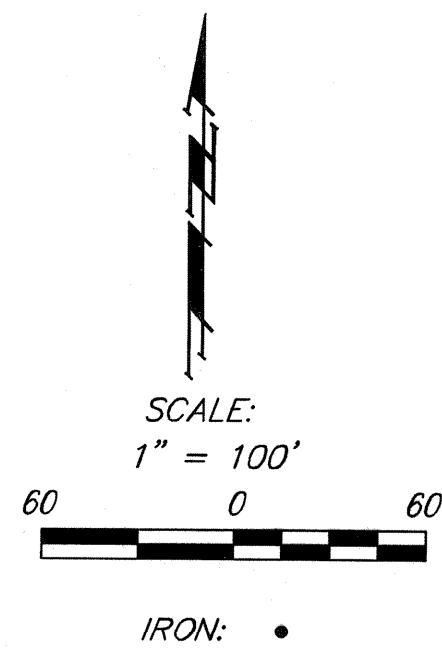
LOTS 1-3, BLOCK A

**Private Project: 2085 PPS (607861)**

CITY OF WICHITA, KANSAS

James Armour, P.E. City Engineer

December 2010



**Benchmarks**

Benchmark #1 - "V" Notch in sidewalk adjacent to Whitier (Abandoned) West of Whitier and South of Kellogg Drive  
Elev. = 1345.54

Benchmark #2 - "□" On top of East curb on Whitier and south property line.  
Elev. = 1345.38

**Index**

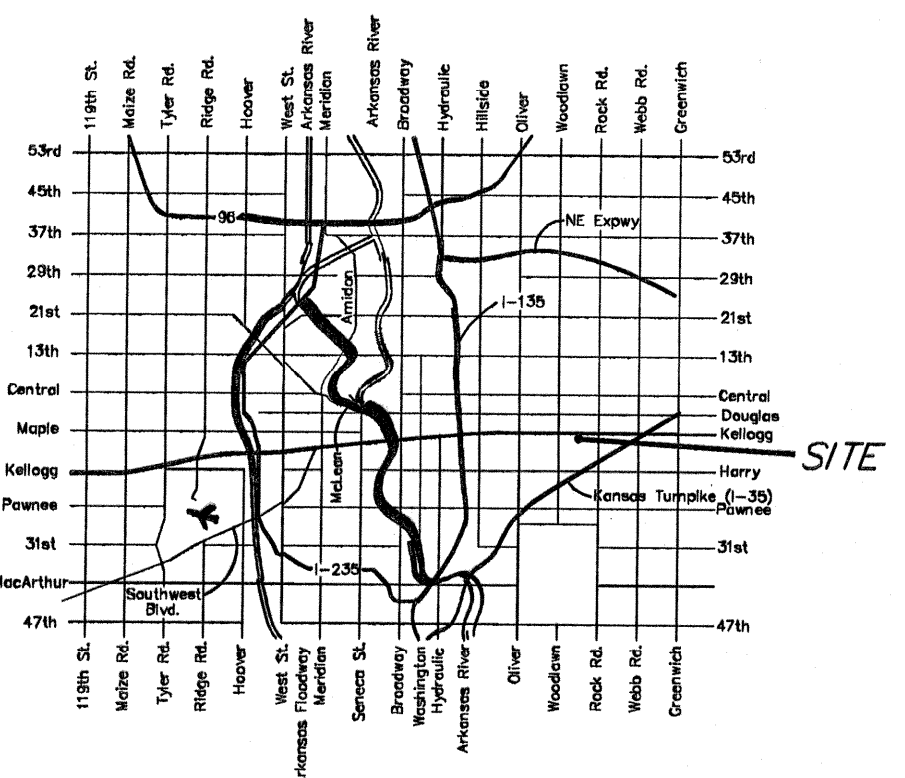
Title Sheet	1
Plan/Profile Sheet	2
Copy of Plat	3
Manhole / Ring & Cover Details	Available On Request
BMP Erosion Details	Available On Request

**Legal Description**

Lots 1-3, Block A, Mike Steven Motors Addition, Wichita, Sedgwick County, Kansas.

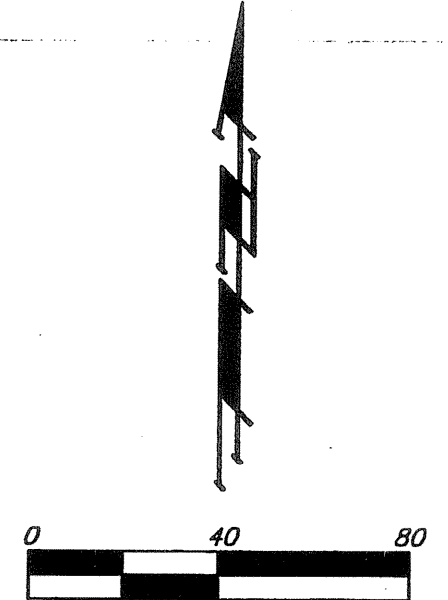
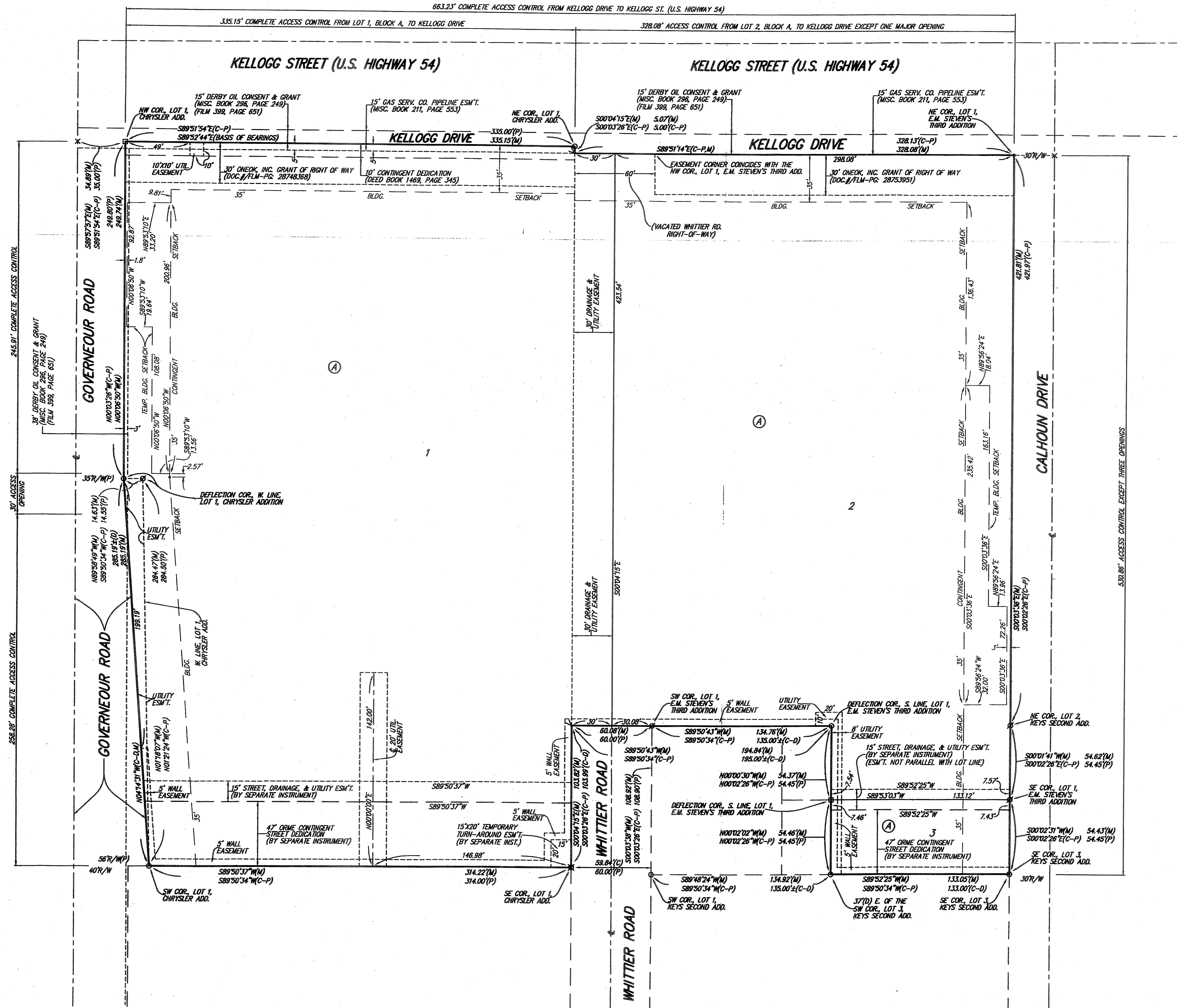
**General Notes**

- Contractor will be required to provide notice to utility companies a minimum of forty-eight (48) hours prior to any excavation, as follows:  
Kansas One-Call 687-2470  
The Contractor must notify the following in case of an emergency:  
Cox Communications  
Kansas Gas Service Company 262-4270  
Westar Energy (Electric) 1-888-482-4950  
Black Hills Energy (Gas) 383-8650  
Southwestern Bell Telephone Co. 1-800-303-0357  
City of Wichita Water Dept. (Water) 1-800-286-8313  
City of Wichita Sewer Maint. (SS) 262-6000  
City of Wichita Storm Sewer Maint. 265-4090  
City of Wichita Traffic Maint. 268-4034
- All disturbed R/W areas not intended for pavement or sidewalk construction shall be seeded with Kansas Premium Fescue Blend at a rate of 8 lb./1000 Sq. Ft., fertilized with a 16-20-6 ratio at a rate of 4 lb./1000 Sq. Ft. and mulched with Prairie Hay at a rate of 92 lb./1000 Sq. Ft. Mulch shall be "patted" with forks or punched into soil to reduce loss due to wind.
- Utility service lines, poles, valve boxes, meters, et cetera are to be adjusted as necessary by others prior to construction unless the plans specifically call for their adjustment by the Contractor or unless the plans specifically identify a utility to be adjusted by its owner during construction. Existing utilities and their location, as shown on the plans represent the best information obtainable for design and shall be field verified. The contractor will be required to work around existing utilities within the right-of-way which do not conflict with proposed construction.
- Contractor shall furnish the inspector with a copy of the manufacturer's certification for any pipe used on this project after completion of pipe installation. The engineer will not certify the project to the city until pipe certification has been received.
- Properties within the project limits may have underground sprinkler systems which conflict with new construction. Contractor will be required to remove such improvements should they not be removed by their owner at the time of construction. The Contractor will be required to salvage all sprinkler heads and/or valves and give such material to their owner. Portions of underground sprinkler systems not in conflict with new construction shall be protected from damage and shall remain in place. All work in connection with underground sprinkler systems shall be considered as subsidiary to the contract pay items of work.
- Contractor shall not start work on the project until the project inspector is assigned to the project and is present on the site. Contractor shall not start on the project until all necessary bonds and permits have been obtained. Bonds may include but are not limited to Statutory, Performance & Maintenance Any work done without inspection will be required to be uncovered for inspection.
- Rubble from the removal of miscellaneous structures and excess excavation which is to be wasted shall be disposed of on sites to be provided by the Contractor. These sites shall be approved by the Engineer as to suitability, appearance and site location. Locations that, in the opinion of the Engineer, will leave an unsightly appearance will not be approved. All disposal sites must be approved by the Kansas Department of Health and Environment. Material either stockpiled or disposed of in a flood plain would require a Kansas State Board of Agriculture permit. Any material dumped in waters of the United States or wetlands is subject to U.S. Corps. of Engineers permitting regulations. Any material buried or stockpiled beyond approved construction limits would require additional archaeological investigations unless buried in a previously approved borrow location.
- All sanitary sewer lines and appurtenances shall be installed in accordance with the most recent edition of City of Wichita, Kansas Standard Specifications for the Construction of City Projects.





# MIKE STEVEN MOTORS ADDITION WICHITA, SEDGWICK COUNTY, KANSAS



NOTE:  
ADDITIONAL BUILDING SETBACKS AND OTHER REQUIREMENTS PER MIKE STEVEN MOTORS COMMUNITY UNIT PLAN, (DP-308).

- = #4 REBAR W/ "BAUGHMAN" CAP (SET)
- = 1/2" IRON (FOUND)
- = #4 REBAR W/ "BAUGHMAN" CAP (FOUND)
- ⊗ = #6 SMOOTH REBAR (FOUND)
- ∅ = 3/4" IRON (FOUND)
- ∨ = "V" NOTCH (SET)
- × = CROSS CUT (SET)

- (M) = MEASURED
- (P) = PLATTED
- (C) = CALCULATED
- (D) = DESCRIBED
- (C-D) = CALCULATED PER DESCRIBED INFO.
- (C-P) = CALCULATED PER PLATTED INFO.

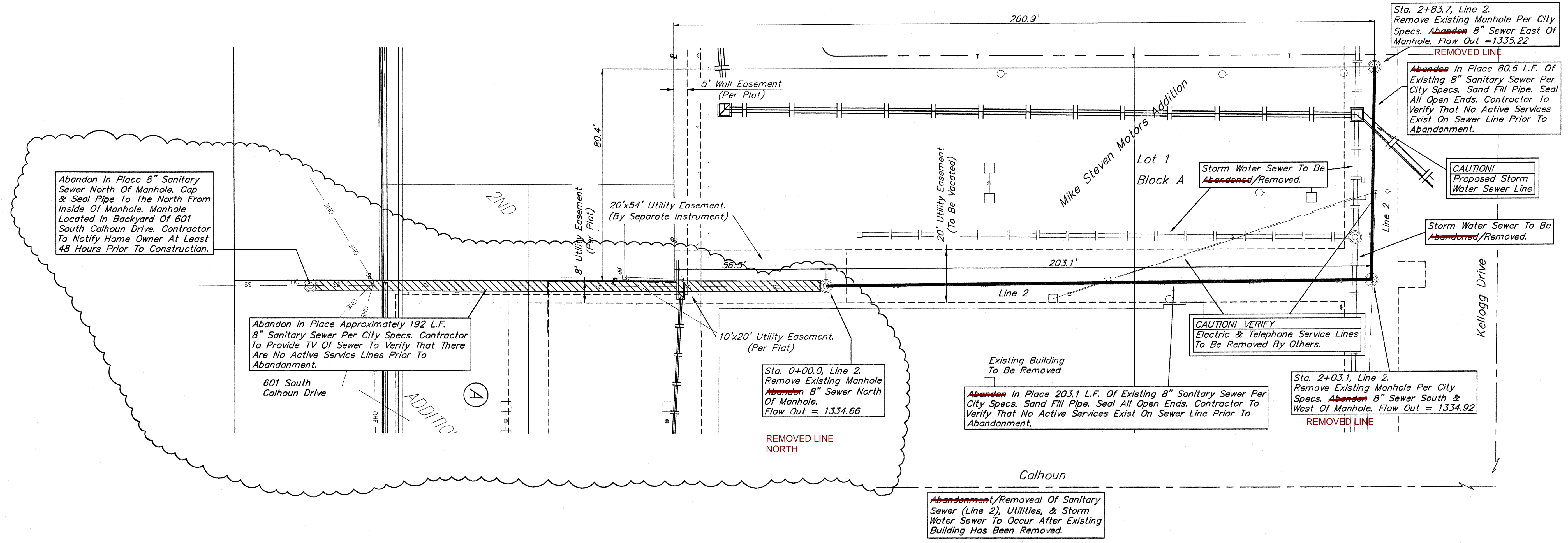
NOTE:  
A DRAINAGE PLAN HAS BEEN DEVELOPED FOR THIS SUBDIVISION AND IS ON FILE WITH THE CITY OF WICHITA, KANSAS. DRAINAGE INTENT SHALL REMAIN AS DEPICTED OR AS MODIFIED WITH THE APPROVAL OF THE CITY ENGINEER OF THE CITY OF WICHITA, KANSAS. NO OBSTRUCTIONS WHICH IMPEDE THE FLOW OF THIS DRAINAGE PLAN SHALL BE ALLOWED.

**Benchmarks**

Benchmark #1 - "V" Notch in sidewalk adjacent to Whittier (Abandoned) West of Whittier and South of Kellogg Drive. Elev. = 1345.54

Benchmark #2 - "□" On top of East curb on Whittier and south property line. Elev. = 1345.38

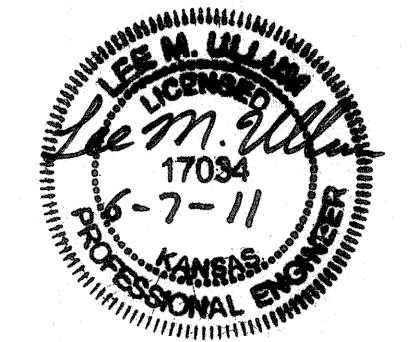
SCALE:  
1" = 20' HORIZONTAL  
1" = 5' VERTICAL



Contractor To Use Extreme Caution When Excavating Near Utility Lines. Contractor To Hand Dig To Expose All Utility Lines Prior To Construction. Verify Depth To Determine Conflict If Any.

**NOTE:**  
Contractor Shall At All Times Coordinate With General Contractor Prior To Removing & Replacing Pavement For Utility Construction & Removal.

Contractor Shall Follow All Applicable Best Management Practices (BMP) For Erosion Control.



<b>Sanitary Sewer Abandonment</b> <b>Mike Steven Motors Addition</b> Lot 1, Block A	
<small>Baughman Company, P.A. 315 Ellis St. Wichita, KS 67211 P 316-2627271 F 316-2620149          ENGINEERING   SURVEYING   PLANNING   LANDSCAPE ARCHITECTURE</small>	
PROJECT NUMBER 2085 PFS (607861)	DESIGN LU
REVISIONS: 6-7-11 LU Manhole Removed 6.192 L.F. SS Abandonment	APPROVED LU
	DATE 6-11
	SCALE Noted
	SHEET <b>2R OF 4</b>
<small>Mike Steven Motors Addition (Site Plan), 10-07-2516-Engineering, SS Rev 5/27-11 10-07-2516</small>	