

**BENCHMARKS:**

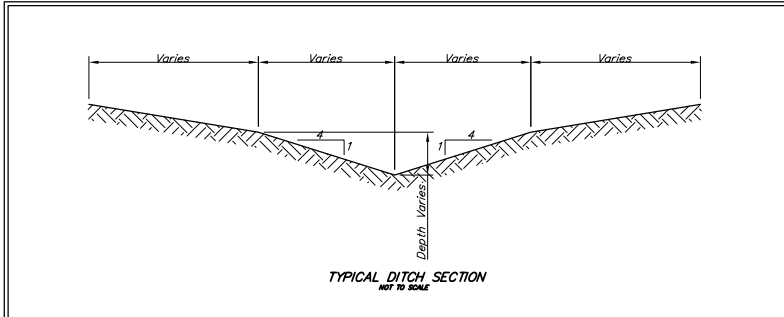
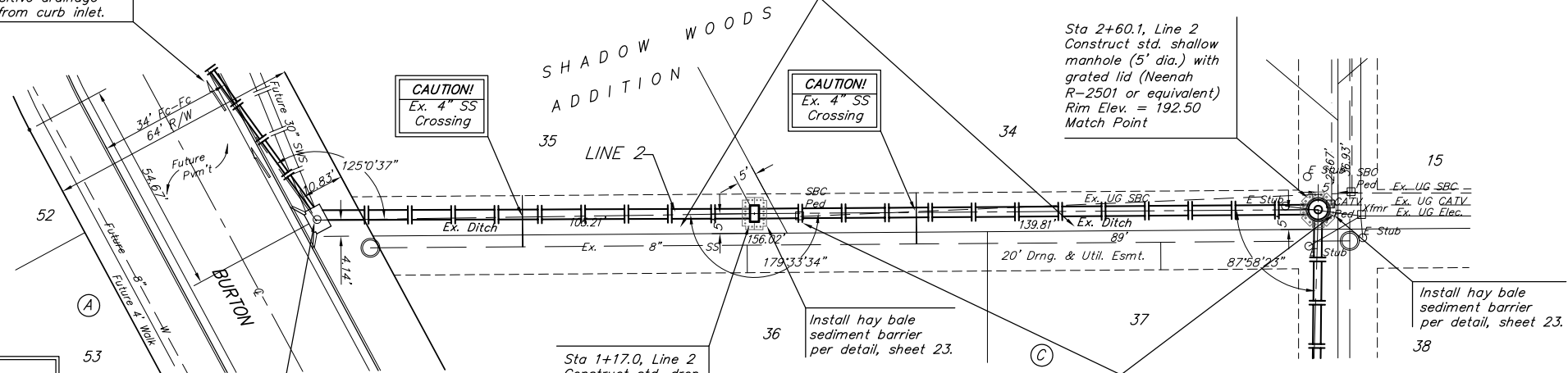
"□" Cut in Headwall east side of driveway South R/W Maple, 245' West of centerline of City View. Elev. = 201.41 (City Datum)

"□" Cut center of north Headwall of RCBC in N. R/W of Maple 570' East of centerline of City View. Elev. = 187.91 (City Datum)

Contractor to regrade existing ditch to provide for positive drainage away from curb inlet.

Contractor to fill in existing ditch as necessary to maintain positive drainage.

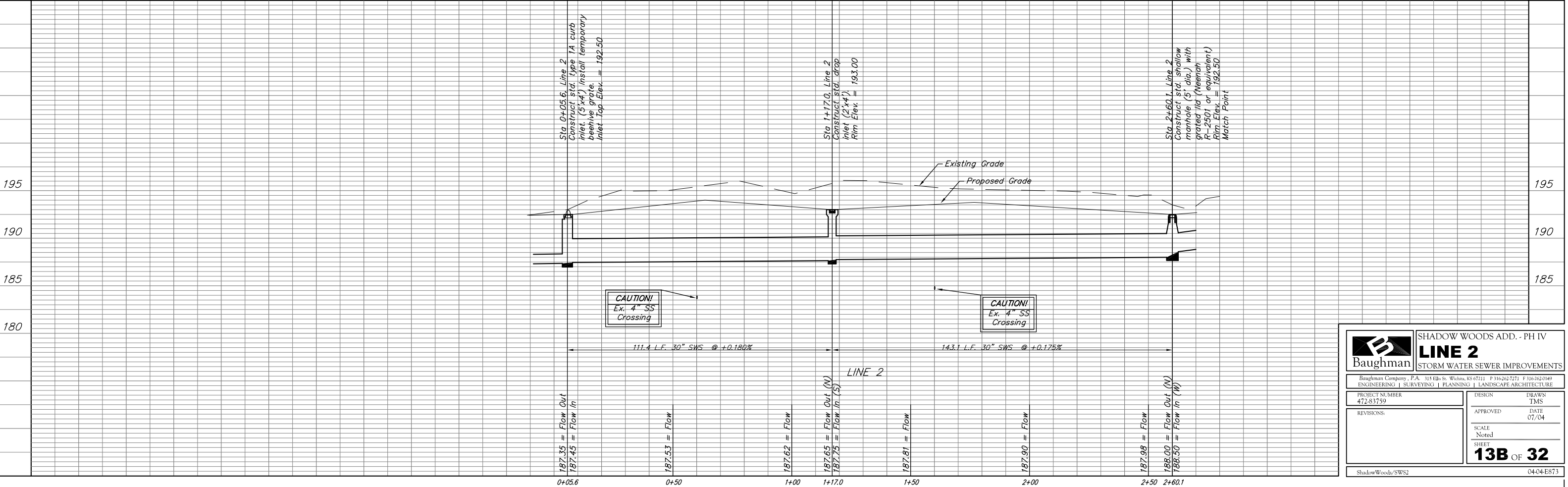
Scale: 1" = 20' Horizontal  
1" = 5' Vertical  
• = Iron



Sta 0+05.6, Line 2  
Construct std. type 1A curb inlet. (5'x4') Install temporary beehive grate.  
Inlet Top Elev. = 192.50

Sta 1+17.0, Line 2  
Construct std. drop inlet (2'x4').  
Rim Elev. = 193.00

Contractor to carefully excavate existing utilities and leave all materials for utility companies to relocate. Coordinate with Jim Tobin of SBC (268-2759), Randy Truitt of Westar Energy (261-6512), & Brian Ring of Cox Communications (262-4270 ext. 7169).



		SHADOW WOODS ADD. - PH IV	
		<b>LINE 2</b>	
ENGINEERING   SURVEYING   PLANNING   LANDSCAPE ARCHITECTURE		STORM WATER SEWER IMPROVEMENTS	
PROJECT NUMBER 472-83759	DESIGN TMS	DATE 07/04	SCALE Noted
REVISIONS:	SHEET <b>13B OF 32</b>		
ShadowWoods/SWS2		04-04-E873	