

FOX RIDGE ADDITION

PHASE 6

PROJECT NO. 472-83790

AN ADDITION TO THE CITY OF WICHITA
 SEDGWICK COUNTY, KANSAS
 JIM ARMOUR, P.E. - ACTING CITY ENGINEER

OCA 765916

GENERAL NOTES

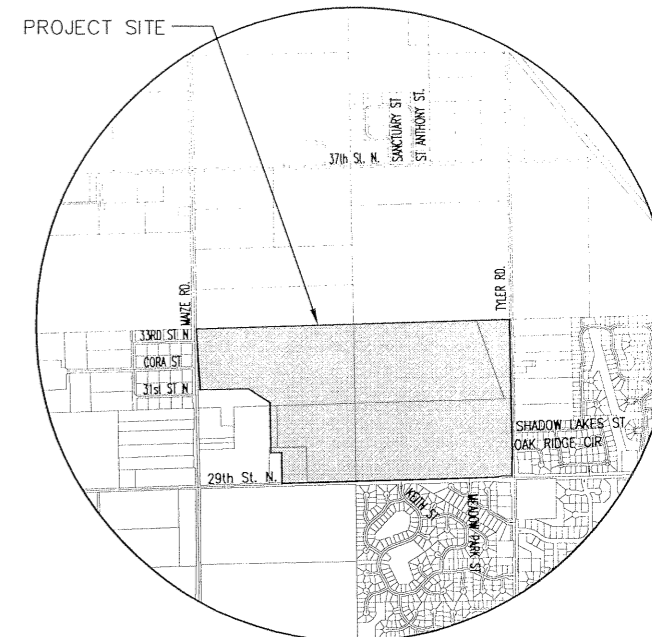
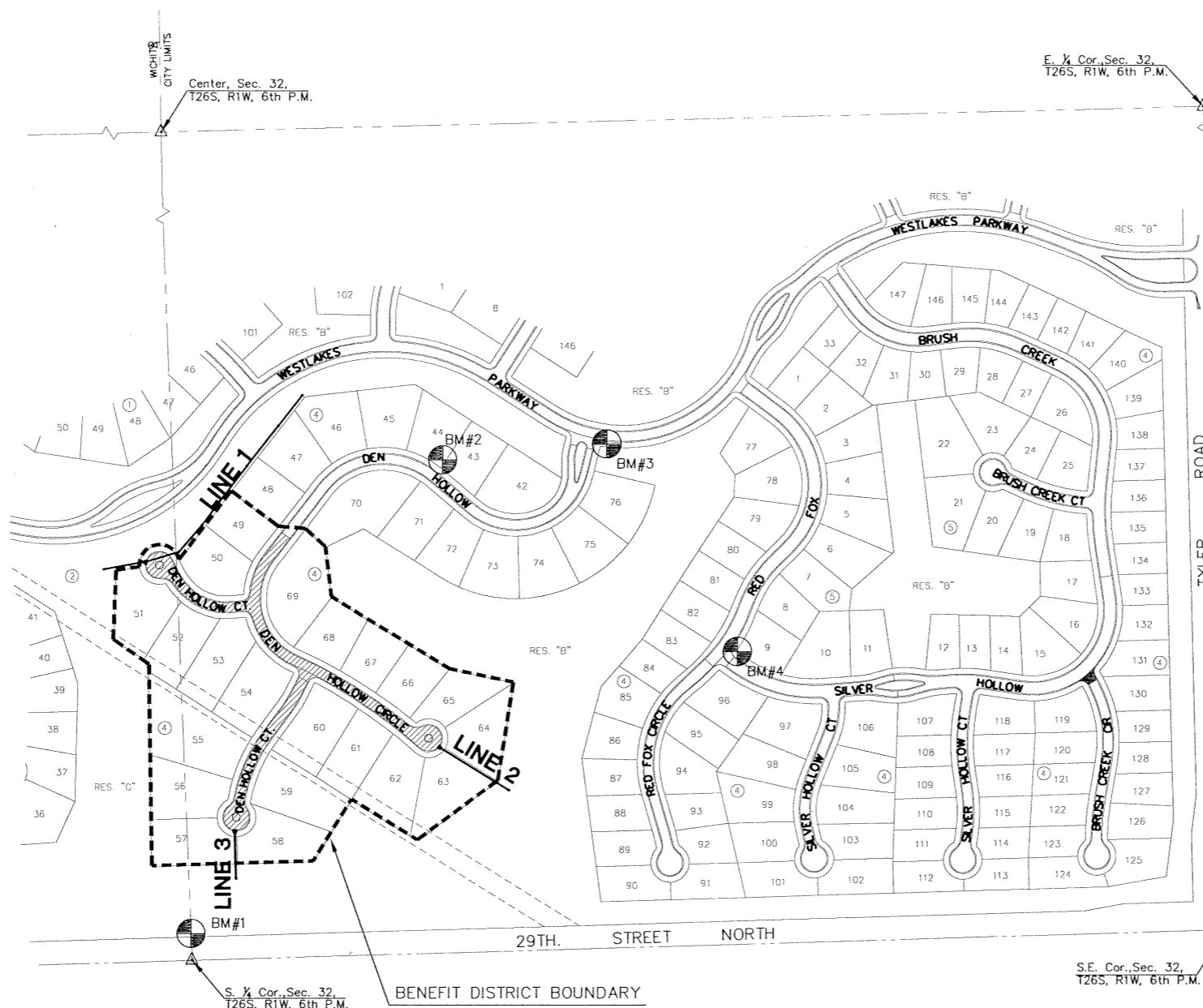
- UNLESS SHOWN OR STATED OTHERWISE ON THESE DRAWINGS, MATERIALS AND CONSTRUCTION SHALL BE IN ACCORDANCE WITH CITY OF WICHITA CONCRETE PAVEMENT AND ASPHALTIC CONCRETE PAVEMENT SPECIFICATIONS.
- CONTRACTOR WILL BE REQUIRED TO PROVIDE A MINIMUM ADVANCE NOTICE OF SEVENTY-TWO (72) HOURS TO UTILITY COMPANIES PRIOR TO STARTING ANY EXCAVATION AS FOLLOWS:
 KANSAS ONE-CALL 1-800-344-7233
 OR 687-2470 (LOCAL WICHITA)
 THE CONTRACTOR MUST NOTIFY THE FOLLOWING IN CASE OF AN EMERGENCY:

SBC (TELEPHONE)	800-870-8390
COX COMMUNICATIONS (CABLE)	262-0661
WESTAR (ELECTRIC)	383-8600
KANSAS GAS SERVICE (GAS)	832-3101
CITY OF WICHITA WATER & SEWER MAINT.	262-6000
AQUILA (GAS)	946-0096

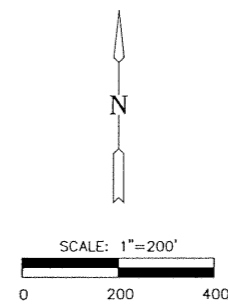
- THE CONTRACTOR SHALL BE RESPONSIBLE FOR PRESERVING PROPERTY IRONS. THE CONTRACTOR WILL BE REQUIRED TO RE-ESTABLISH ANY PROPERTY IRONS WHICH ARE DAMAGED OR DESTROYED BY HIS CONSTRUCTION OPERATIONS. SUCH IRONS SHALL BE RE-ESTABLISHED BY A LICENSED LAND SURVEYOR IN ACCORDANCE WITH STATE LAWS.
- EXISTING UTILITIES AND THEIR LOCATIONS, AS SHOWN ON THE PLANS REPRESENT THE BEST INFORMATION OBTAINABLE FOR DESIGN. LOCATION INFORMATION HAS BEEN OBTAINED FROM THE VARIOUS UTILITY COMPANIES AND IS EITHER FROM COMPANY RECORD DRAWINGS OR COMPANY PROVIDED FIELD LOCATIONS. THE PLAN LOCATIONS SHOWN ARE NOT GUARANTEED. ADDITIONAL EXISTING UTILITIES MAY ALSO BE ENCOUNTERED.
- RUBBLE FROM THE REMOVAL OF MISCELLANEOUS STRUCTURES AND EXCESS EXCAVATION WHICH IS TO BE WASTED SHALL BE DISPOSED OF ON SITES TO BE PROVIDED BY THE CONTRACTOR. THESE SITES SHALL BE APPROVED BY THE ENGINEER AS TO SUITABILITY, APPEARANCE AND SITE LOCATION. LOCATIONS THAT, IN THE OPINION OF THE ENGINEER, WILL LEAVE AN UNSIGHTLY APPEARANCE WILL NOT BE APPROVED. ALL DISPOSAL SITES MUST BE APPROVED BY THE KANSAS DEPARTMENT OF HEALTH AND ENVIRONMENT. MATERIAL EITHER STOCKPILED OR DISPOSED OF IN A FLOOD PLAIN WOULD REQUIRE A KANSAS STATE BOARD OF AGRICULTURE PERMIT. ANY MATERIAL DUMPED IN WATERS OF THE UNITED STATES OR WETLANDS IS SUBJECT TO U.S. CORPS OF ENGINEERS PERMITTING REGULATIONS. ANY MATERIAL BURIED OR STOCKPILED BEYOND APPROVED CONSTRUCTION LIMITS WOULD REQUIRE ADDITIONAL ARCHAEOLOGICAL INVESTIGATIONS UNLESS BURIED IN A PREVIOUSLY APPROVED BORROW LOCATION.
- THIS PROJECT INCLUDES A CERTAIN AMOUNT OF ROLL TYPE CURB CONSTRUCTION. ROLL CURBS SHALL BE DEPRESSED THROUGH ALL DRIVEWAY OPENINGS WHEN SUCH DRIVES ARE CONSTRUCTED AS A PART OF THE PROJECT. NO MORE THAN 2 DRIVES 20 FEET IN WIDTH OR EQUIVALENT COMBINATIONS THEREOF ARE TO BE CONSTRUCTED WITH THIS PROJECT.
- TRANSITION CURB FROM FULL HEIGHT COMBINATION CURB AND GUTTER TO ROLL TYPE COMBINATION CURB AND GUTTER IS TO BE PAID AS BID FOR LINEAL FEET COMBINED CURB AND GUTTER (3 5/8" ROLL).
- A SAW CUT OF AT LEAST ONE-HALF THE DEPTH OF THE EXISTING SURFACE COURSES OR ONE-FOURTH THE DEPTH OF THE EXISTING TOTAL PAVEMENT THICKNESS SHALL BE PROVIDED AT LOCATIONS WHERE PROPOSED CONSTRUCTION ABUTS AN EXISTING SURFACE OR PAVEMENT FOR WHICH PARTIAL REMOVAL OF THAT SURFACE OR PAVEMENT IS REQUIRED. SAW JOINT TO FACILITATE REMOVAL WITHIN THREE (3) FEET OF EXISTING JOINTS WILL NOT BE PERMITTED AND FOR SUCH INSTANCES THE LIMITS OF REMOVAL SHALL EXTEND TO THE EXISTING JOINT. SUCH SAW CUTS WILL NOT BE PAID FOR DIRECTLY AND THIS COST SHALL BE CONSIDERED AS SUBSIDIARY TO THE REMOVAL OF SURFACE OR PAVEMENT.
- CONTRACTOR SHALL RESEED AND MULCH ALL DISTURBED AREAS WITH RYE GRASS AT A RATE OF 200 POUNDS PER ACRE. COST SHALL BE CONSIDERED SUBSIDIARY TO SITE RESTORATION.
- SOIL SUBGRADE CONDITIONS WARRANT INSPECTOR APPROVAL BEFORE TENSAR MAT SHALL BE PLACED. CONTRACTOR SHALL PROOF ROLL THE SUBGRADE TO OBTAIN DESIRED COMPACTION. ANY AREAS THAT "PUMP" OR COMPACTION IS NOT OBTAINED SHALL BE EXCAVATED OUT TO A DEPTH DETERMINED BY THE ENGINEER AND REPLACED WITH CRUSH CONCRETE. COST ASSOCIATED WITH PREPARATION OF SUBGRADE SOIL SHALL BE SUBSIDIARY TO EARTHWORK.
- BORROW AVAILABLE ON SITE. CONTRACTOR SHALL COORDINATE WITH DEVELOPER TO DETERMINE BORROW LOCATIONS.

PROJECT LENGTH	
DEN HOLLOW	797 L.F.
DEN HOLLOW CT.	667 L.F.
EARTHWORK SUMMARY	
EXCAVATION	1110 C.Y.
LOOSE FILL	380 C.Y.
COMPACTED FILL	150 C.Y.

DEN HOLLOW FROM THE SOUTH LINE OF LOT 48, BLOCK 4 TO THE WEST LINE OF LOT 60, BLOCK 4;
 DEN HOLLOW CT. FROM THE WEST LINE OF DEN HOLLOW TO AND INCLUDING THE CUL-DE-SAC
 SERVING LOTS 50 THRU 53, BLOCK 4; DEN HOLLOW CT. FROM THE SOUTH LINE OF DEN HOLLOW TO
 AND INCLUDING THE CUL-DE SAC SERVING LOTS 55 THROUGH 59, BLOCK 4; AND DEN HOLLOW CIR.
 FROM THE WEST LINE OF LOT 60, BLOCK 4 TO AND INCLUDING THE CUL-DE SAC SERVING LOTS 60
 THROUGH 67, BLOCK 4.



VICINITY MAP



INDEX TO DRAWINGS

SHEET NO.	DESCRIPTION
1	TITLE SHEET
2-4	PAVING DETAILS
5	SIGNING DETAILS
6-9	PAVING PLANS
10-11	SWS DETAILS
12-14	SWS PLANS
15-19	BMP DETAILS
20-24	CROSS SECTIONS
25	FINAL PLAT

BENCHMARKS

- BM#1 C.O.W. disc 0.5 miles east of Maize Rd. on 29th St. No. ± 25' north of 29th St. Cl. Elev.=160.86
- BM#2 C.O.W. disc north side of Den Hollow @ P.C. between Lots 44 & 43, Blk. 4 Elev.=166.40
- BM#3 C.O.W. disc in T.C. of south return, southeast corner of Den Hollow and Westlakes Parkway Elev.=165.66
- BM#4 C.O.W. disc in T.C. of north return, northeast corner of Silver Hollow and Red Fox Elev.=167.32

GREGORY J. ALLISON
 LICENSED PROFESSIONAL ENGINEER
 11159
 KANSAS
Gregory J. Allison 12/1/05



FOX RIDGE ADDITION - PHASE 6
 PROJECT NAME

TITLE SHEET
 SHEET TITLE

DFL DESIGN BY:	KKL DRAWN BY:	GJA CHECKED BY:
JANUARY 2005 DATE	99118ET6 JOB NO.	1 / 25 SHEET/OF