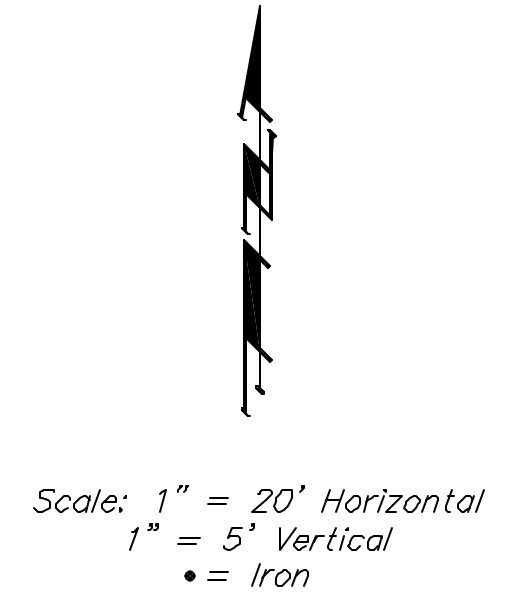
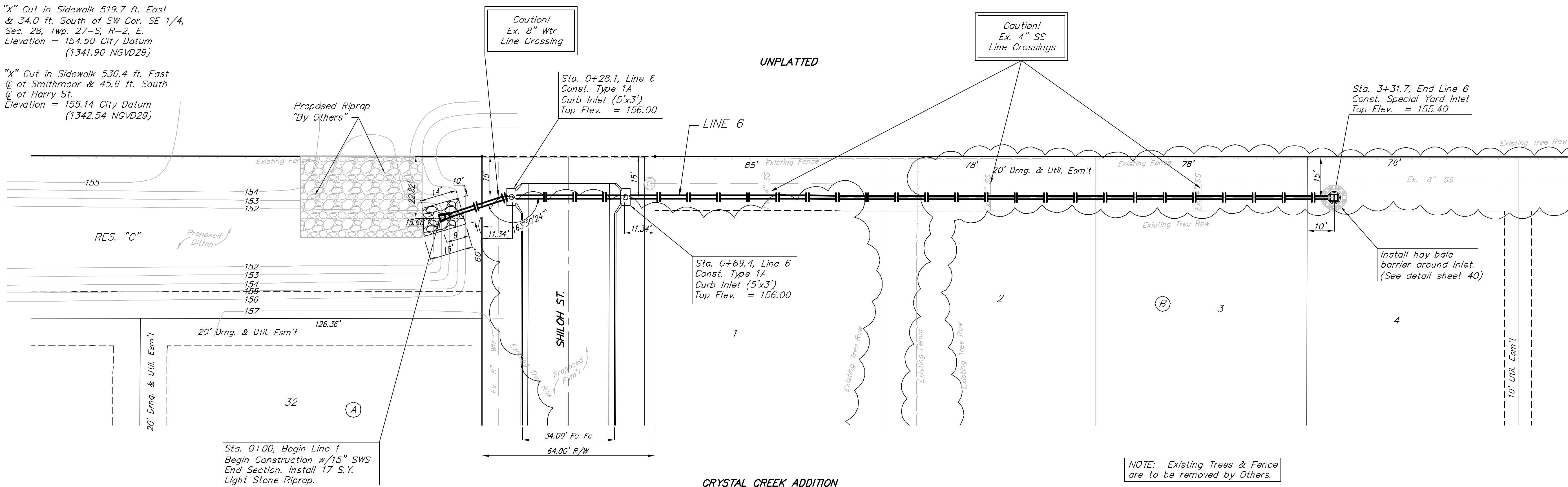


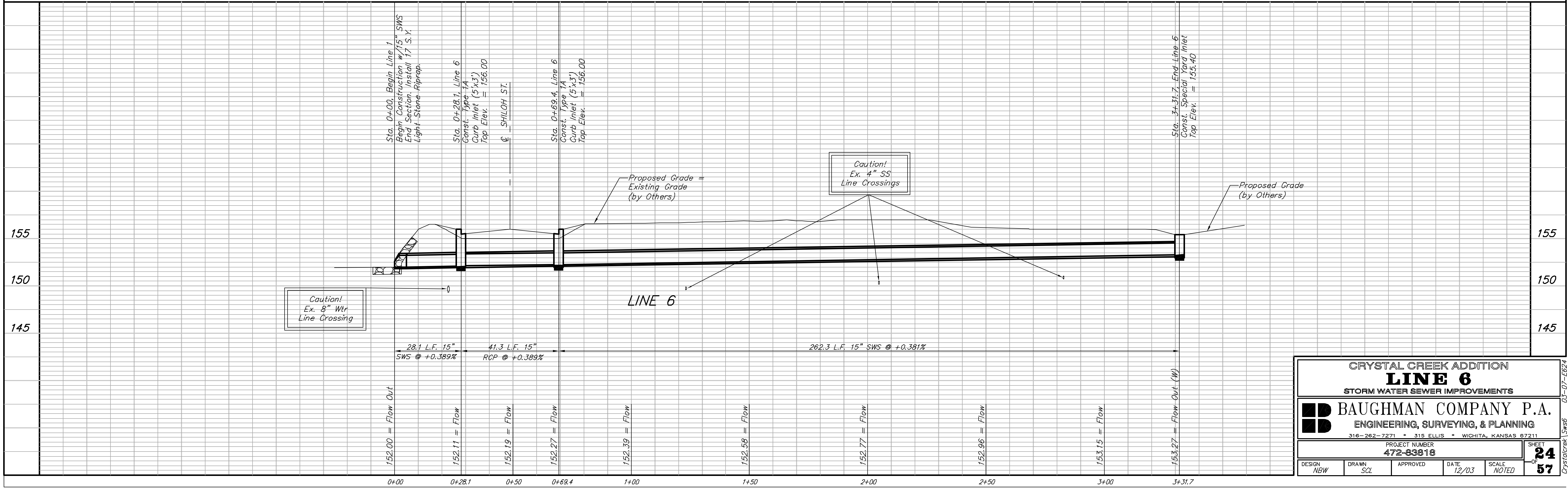
BENCHMARK:

- #1. "X" Cut in Sidewalk 519.7 ft. East & 34.0 ft. South of SW Cor. SE 1/4, Sec. 28, Twp. 27-S, R-2, E. Elevation = 154.50 City Datum (1341.90 NGVD29)
- #2. "X" Cut in Sidewalk 536.4 ft. East of Smithmoor & 45.6 ft. South of Harry St. Elevation = 155.14 City Datum (1342.54 NGVD29)



CRYSTAL CREEK ADDITION

NOTE: Existing Trees & Fence are to be removed by Others.



CRYSTAL CREEK ADDITION				
LINE 6				
STORM WATER SEWER IMPROVEMENTS				
BAUGHMAN COMPANY P.A.				
ENGINEERING, SURVEYING, & PLANNING				
316-262-7271 • 315 ELLIS • WICHITA, KANSAS 67211				
PROJECT NUMBER				
472-63818				
DESIGN	DRAWN	APPROVED	DATE	SCALE
NGW	SQL		12/03	NOTED
				SHEET 24 OF 57