

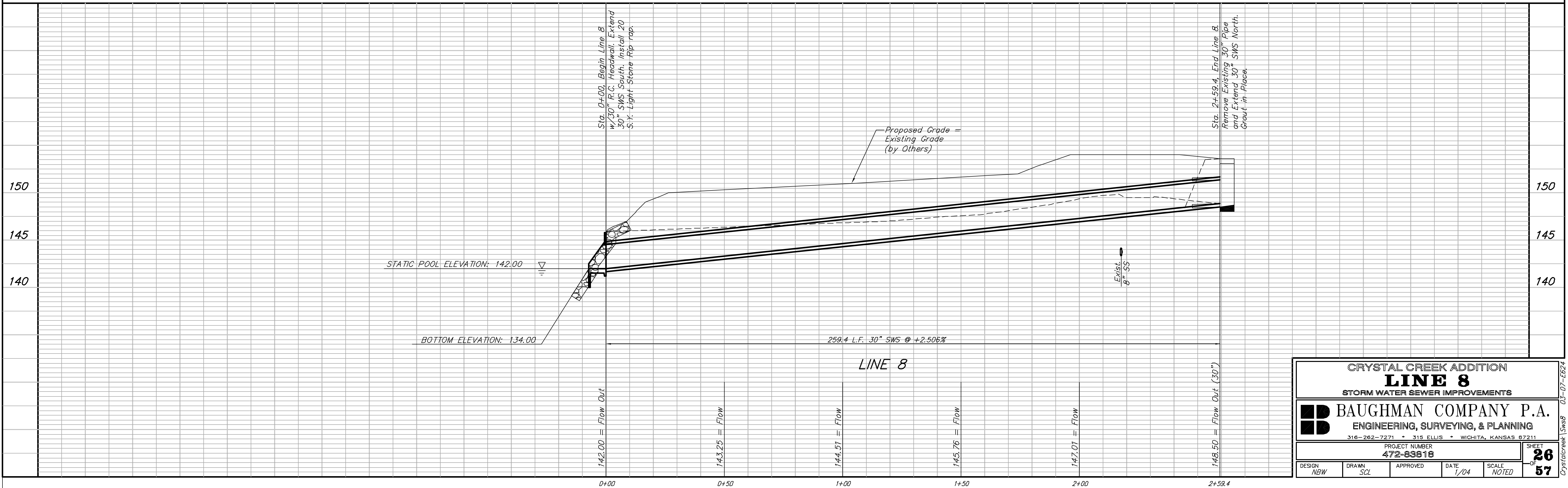
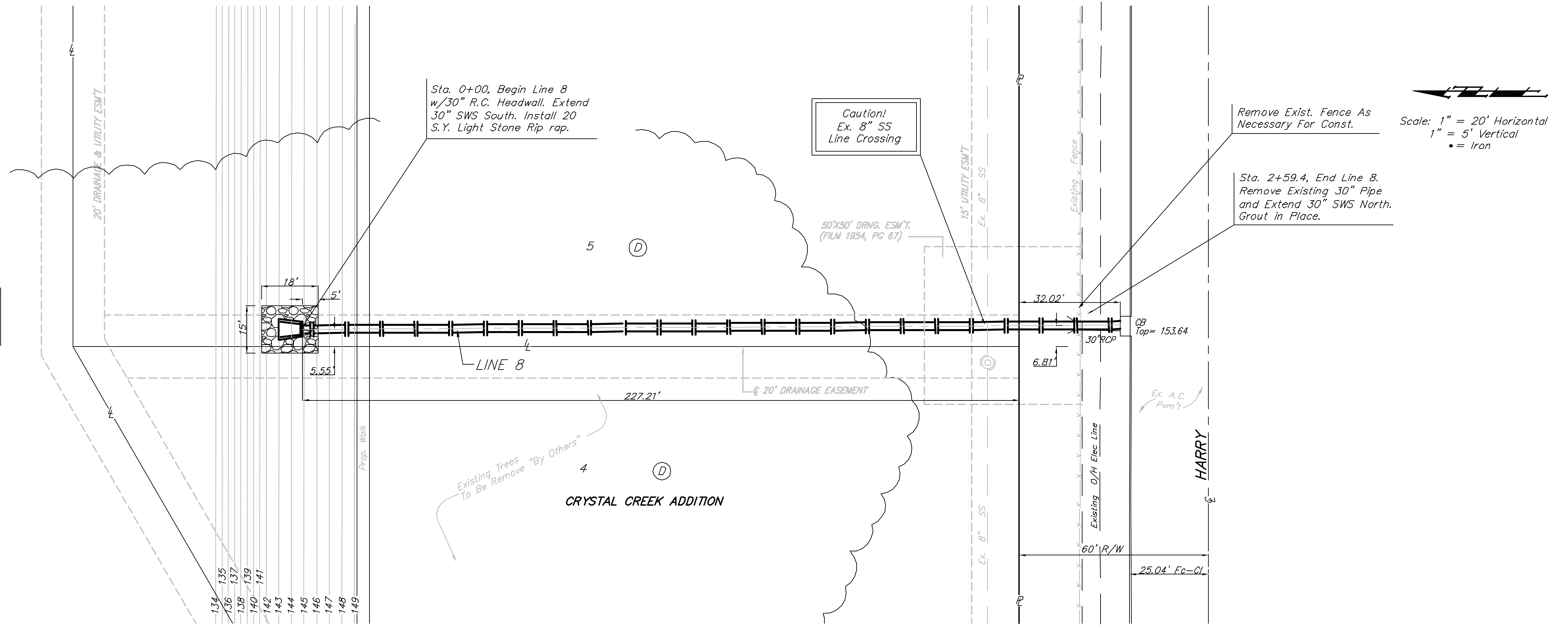
BENCHMARK:

- #1. "X" Cut in Sidewalk 519.7 ft. East & 34.0 ft. South of SW Cor. SE 1/4, Sec. 28, Twp. 27-S, R-2, E. Elevation = 154.50 City Datum (1341.90 NGVD29)
- #2. "X" Cut in Sidewalk 536.4 ft. East of Smithmoor & 45.6 ft. South of Harry St. Elevation = 155.14 City Datum (1342.54 NGVD29)

Reserve "A"

POND DATA:
 STATIC POOL ELEVATION: 142.00
 BOTTOM ELEVATION: 134.00

Contractor to coordinate Line 8 construction with C.O.W. SWD Project #212.



CRYSTAL CREEK ADDITION			
LINE 8			
STORM WATER SEWER IMPROVEMENTS			
BAUGHMAN COMPANY P.A.			
ENGINEERING, SURVEYING, & PLANNING			
316-262-7271 • 315 ELLIS • WICHITA, KANSAS 67211			
PROJECT NUMBER		SHEET	
472-83818		26	
DESIGN	DRAWN	APPROVED	DATE
NBW	SCL		1/04
		SCALE	NOTED
		57	

Crystalcreek 15we8 03-07-EG24