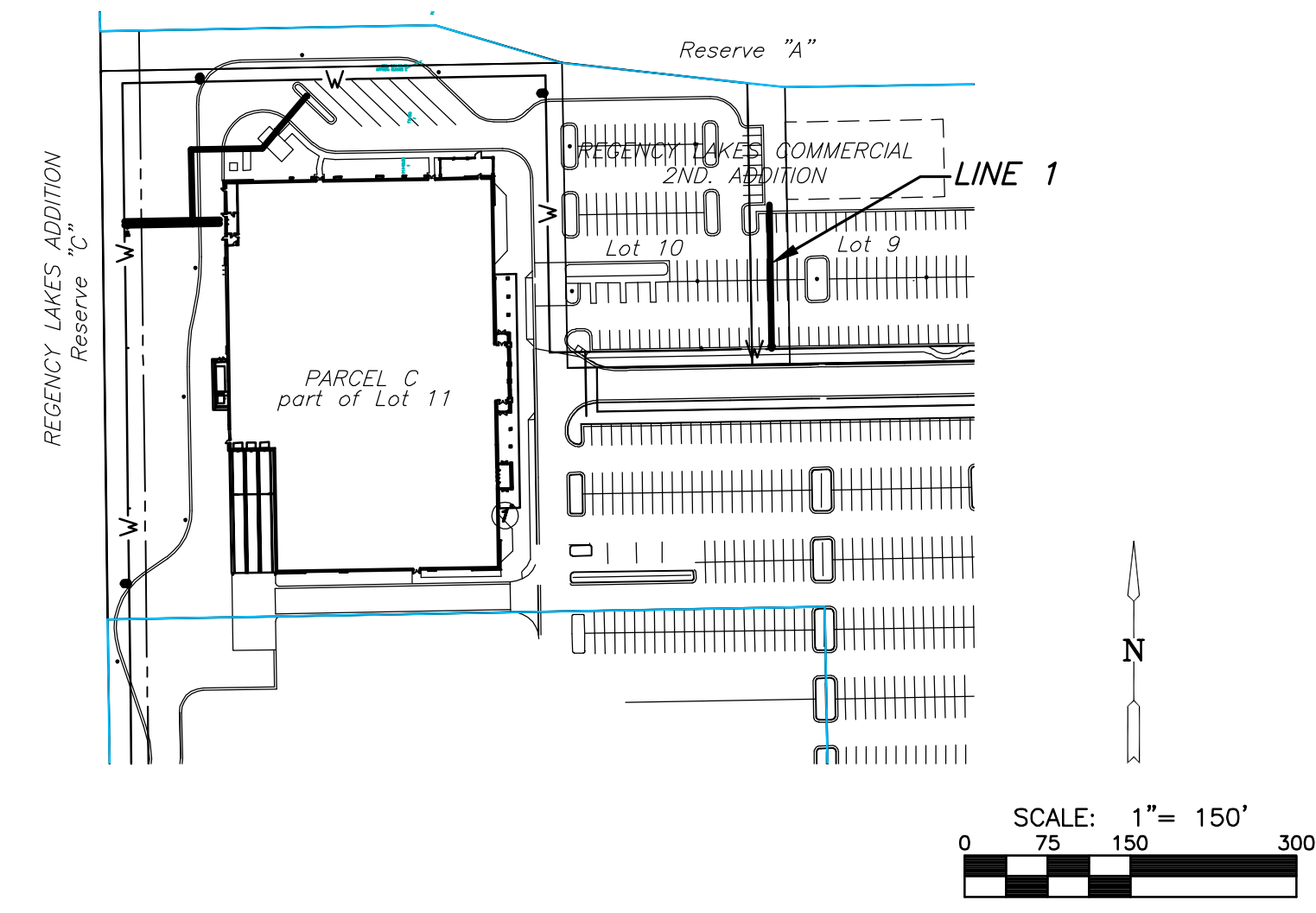
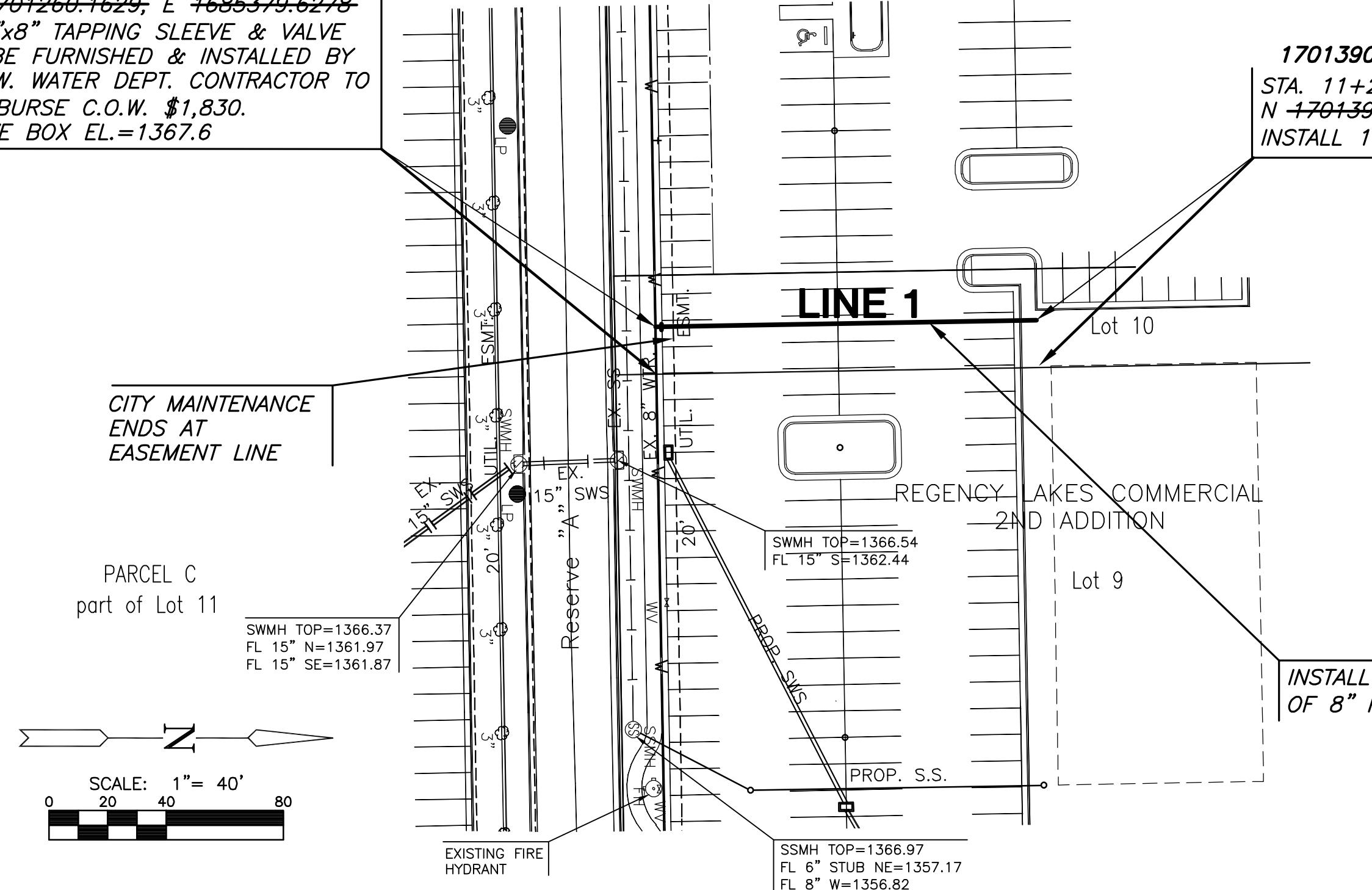


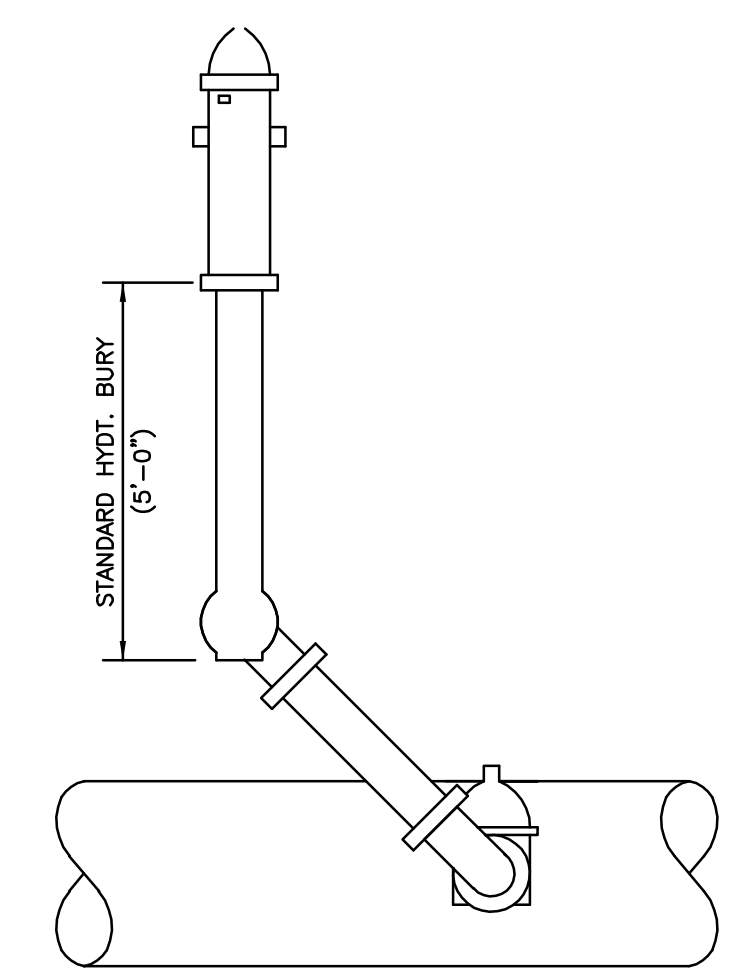
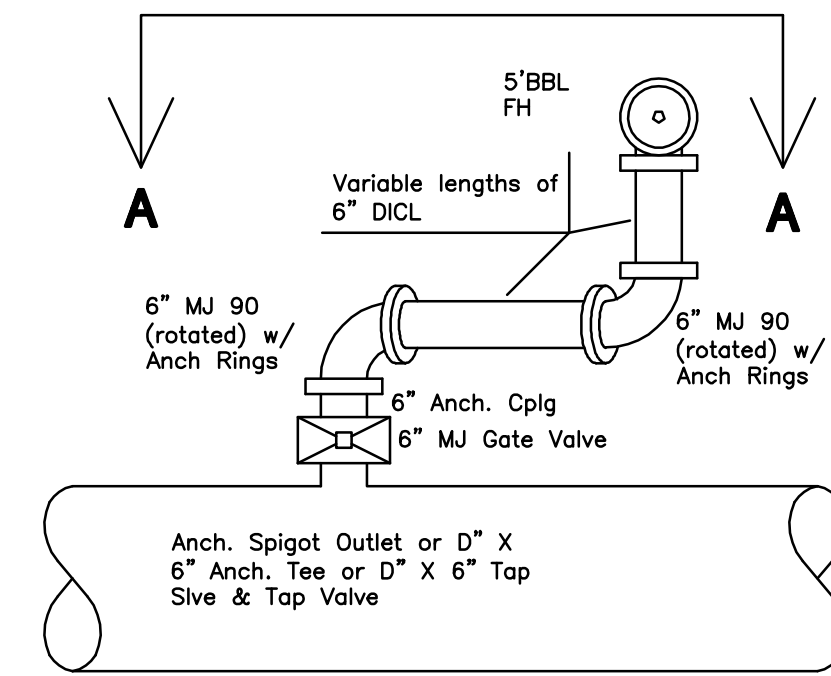
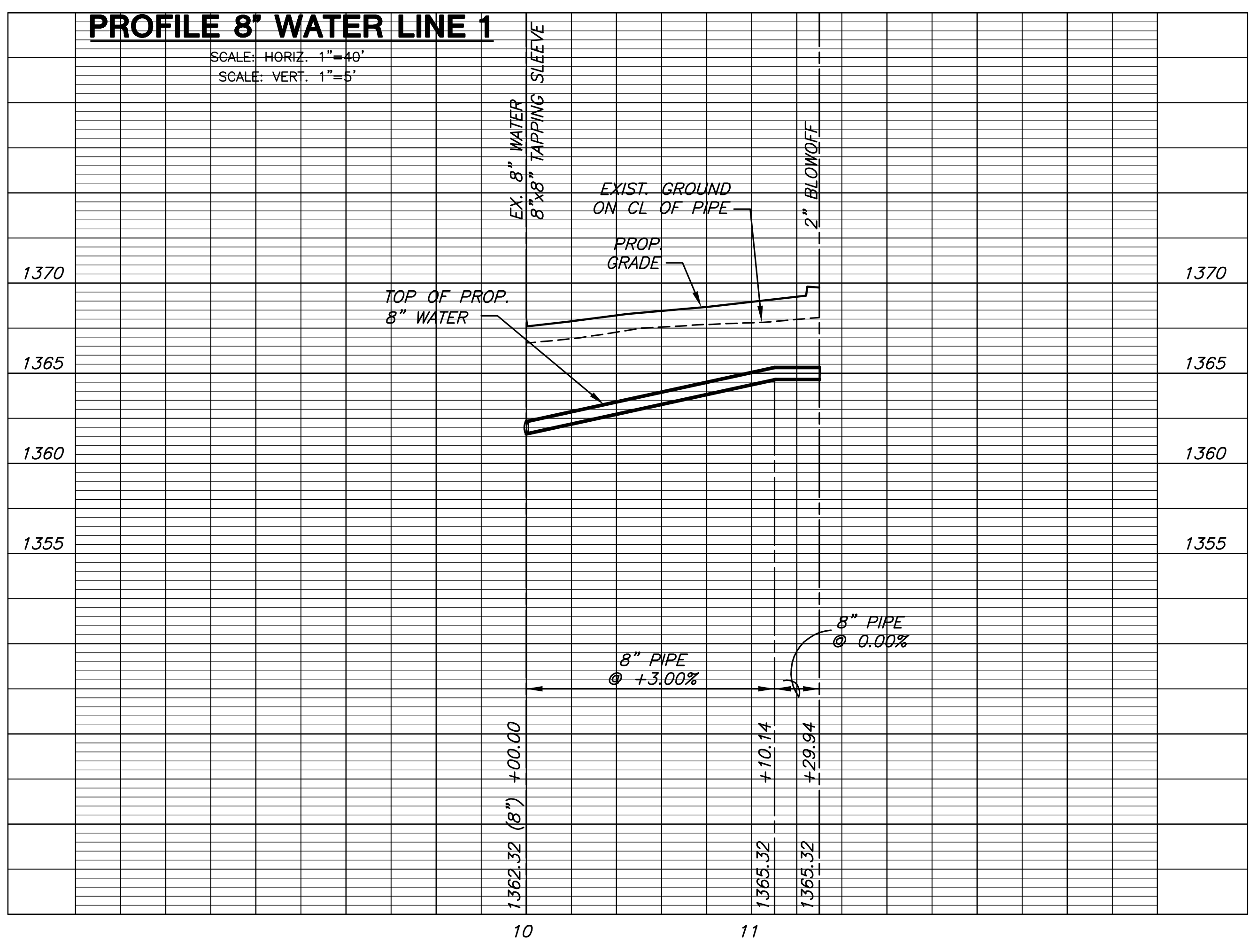
1701262.202 A.B. 1685395.855 A.B.
STA. 10+00.00, LINE 1
N 1701260.1629, E 1685379.6278
1-8"x8" TAPPING SLEEVE & VALVE
TO BE FURNISHED & INSTALLED BY
C.O.W. WATER DEPT. CONTRACTOR TO
REMBURSE C.O.W. \$1,830.
VALVE BOX EL.=1367.6

1701390.963 A.B. 1685392.960 A.B.
STA. 11+29.94, LINE 1
N 1701390.0977, E 1685377.3544
INSTALL 1-2" BLOWOFF ASSY.



AS-BUILT PLANS - FEB. 2012

INSPECTED BY: TIM TEACHOUT, MKEC ENGINEERING CONSULTANTS, INC.
CONSTRUCTED BY: MIES CONSTRUCTION



SWING JOINT HYDRANT DETAIL

PRIVATE WATER SERVICES
CABELA'S, INC.
REGENCY LAKES COMMERCIAL 2ND ADDITION

PRIVATE WATER
SHEET TITLE
1595PPW (607853)
PROJECT NUMBER

SPE / DM / MAB
DESIGNED DRAWN CHECKED

ISSUED
June 2011
REVISED
AS-BUILTS 02/2012

SHEET NO.
2 of 4