

1. Benchmark - "□" chiseled on top of curb.

Elevation = 1328.35 (NAVD 88)

2. Benchmark - #4 Rebar with Orange "Tapo Point" Cap.

Elevation = 1333.41 (NAVD 88)

W.L. Sta. 0+00, Begin Line 1
B.L. Sta. 6+46.53, 26.33' Rt.
Tap Existing 12" Water Main
1-12" x 8" Tapping Sleeve
1-12" Tapping Valve
1-6" Valve Box
Valve Box Elev. = 1329.55
To be Furnished & Installed by City of Wichita Water Dept.
Contractor to Reimburse Water Dept. \$1,830 for Tapping Sleeve & Valve Installation.
Contractor to Verify Depth & Location of Existing 12" Water Line Prior to Construction.
Extend 8" Pipe East

Contractor to saw cut, Remove and Replace 4.3 S.Y. Concrete Sidewalk Pavement. Remove Concrete to nearest joint past construction.

Contractor to saw cut, Remove and Replace 9.7 S.Y. Concrete Sidewalk Pavement. Remove Concrete to nearest joint past construction.

Contractor to saw cut, Remove and Replace 7.2 S.Y. Concrete Sidewalk Pavement. Remove Concrete to nearest joint past construction.

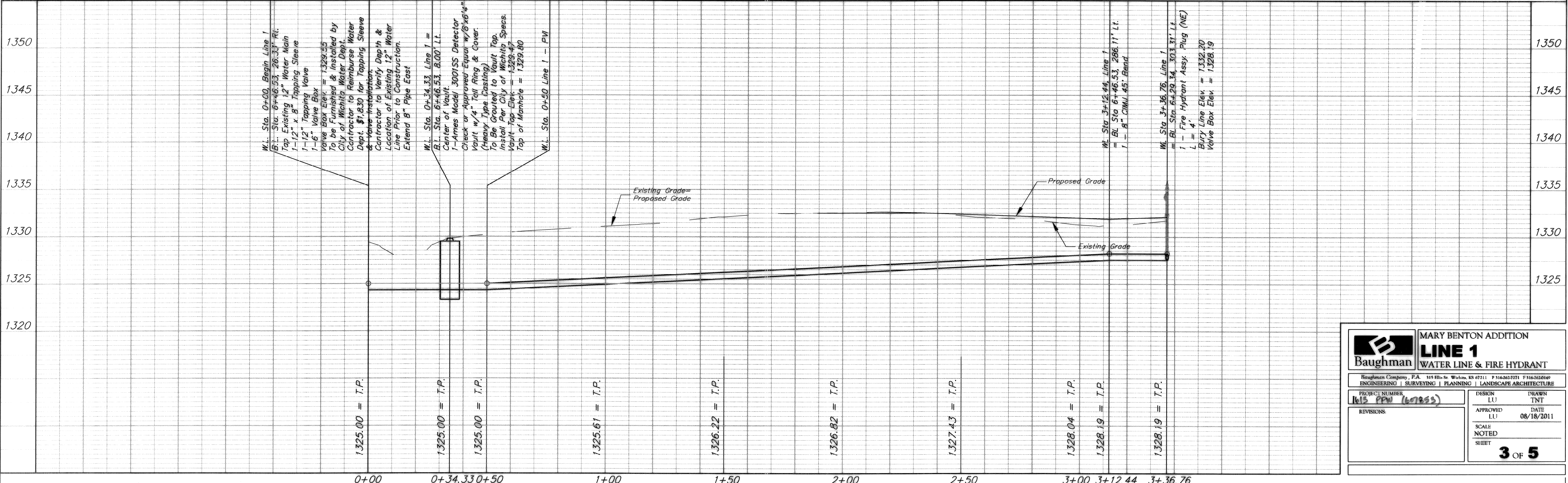
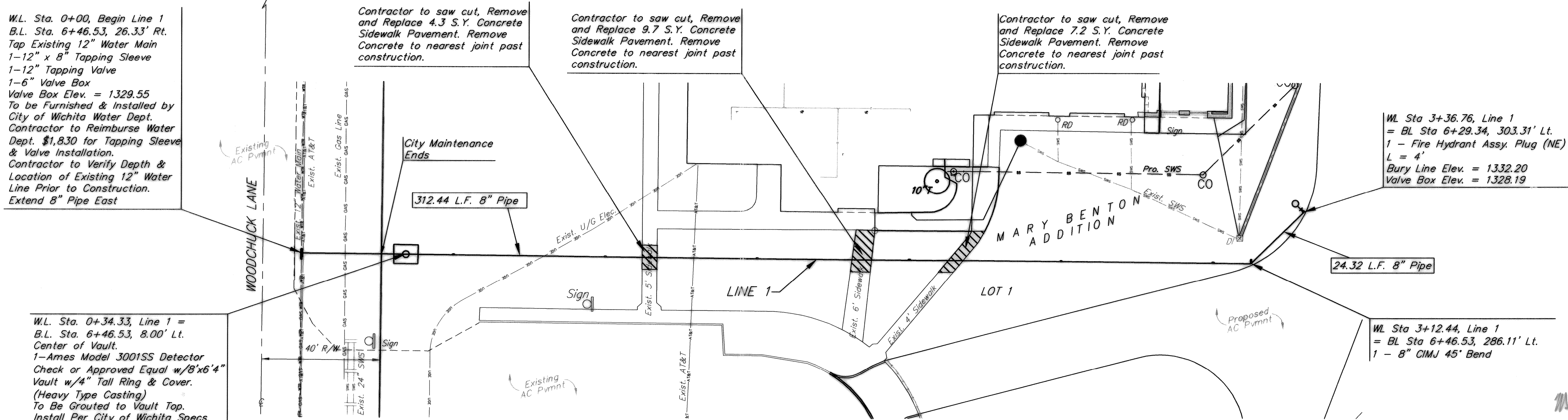
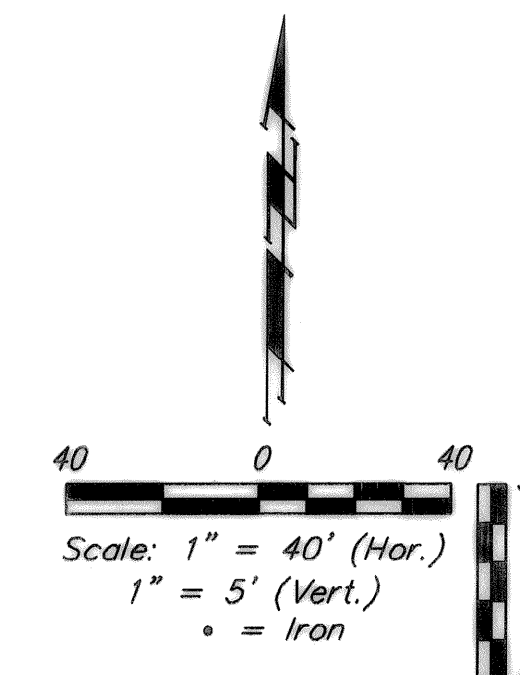
W.L. Sta 3+36.76, Line 1
= B.L. Sta 6+29.34, 303.31' Lt.
1 - Fire Hydrant Assy. Plug (NE)
L = 4'
Bury Line Elev. = 1332.20
Valve Box Elev. = 1328.19

W.L. Sta 3+12.44, Line 1
= B.L. Sta 6+46.53, 286.11' Lt.
1 - 8" CIMJ 45° Bend

Baseline 0+00 = Northwest Property Corner Lot 1 Mary Benton Addition

Contractor Shall Follow All Applicable Best Management Practices (BMP) For Erosion Control.

Contractor To Use Extreme Caution When Excavating Near Utility Lines. Contractor To Hand Dig To Expose All Utility Lines Prior To Construction. Verify Depth To Determine Conflict If Any.



		MARY BENTON ADDITION	
		LINE 1	
ENGINEERING SURVEYING PLANNING LANDSCAPE ARCHITECTURE		DESIGN	DRAWN
PROJECT NUMBER 1613 PFM (6/18/25)		LU	TNT
REVISIONS:		APPROVED	DATE
		LU	08/18/2011
		NOTED	
		SHEET	3 OF 5