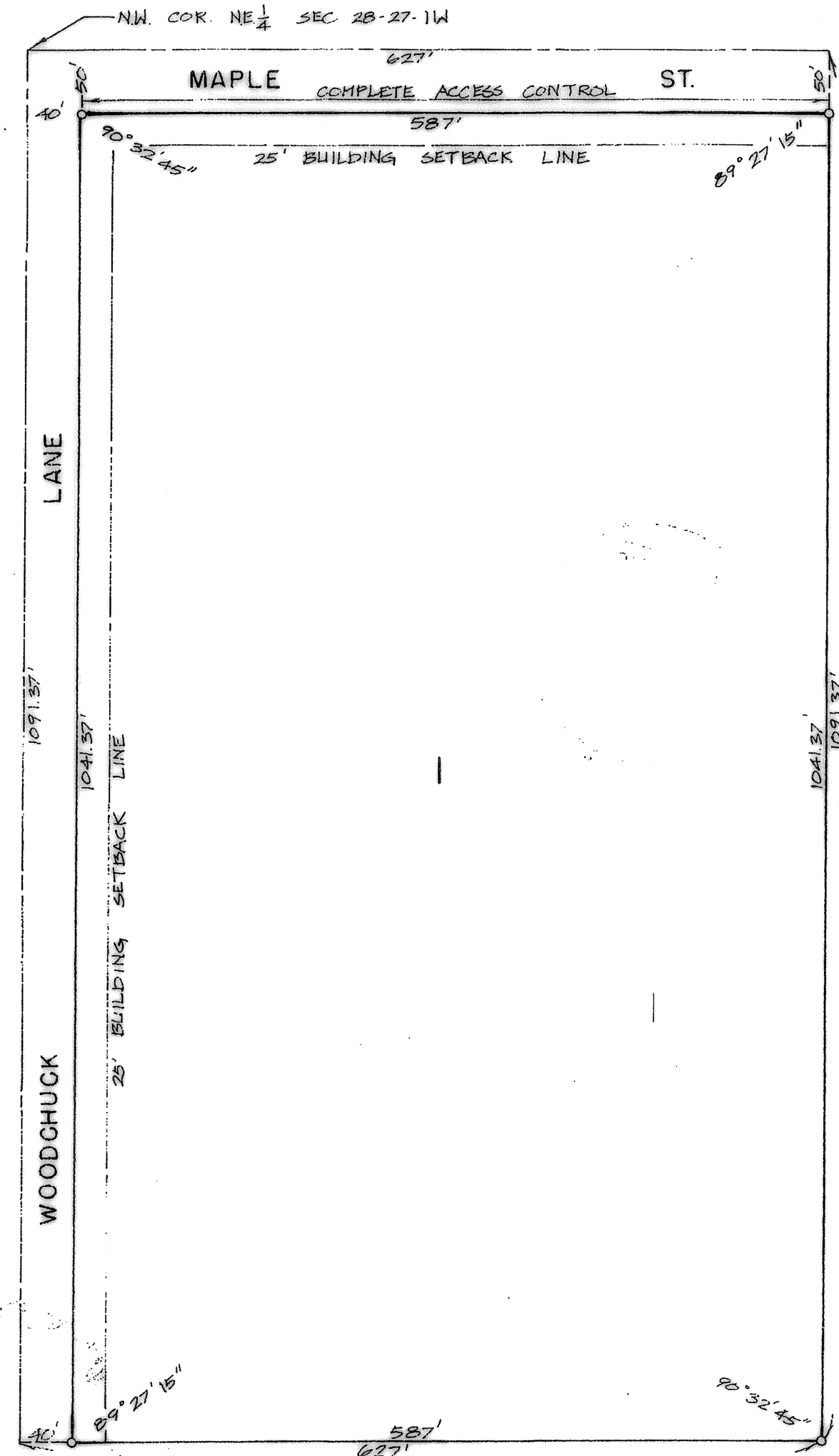


# MARY BENTON ADDITION

WICHITA, SEDGWICK COUNTY, KANSAS



State of Kansas, County of Sedgwick, SS.

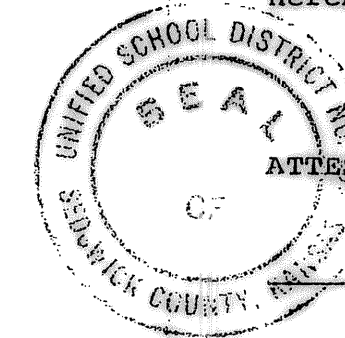
I, Kenneth O. Taylor, Civil Engineer in said State and County, do hereby certify that I have surveyed and platted "MARY BENTON ADDITION", Wichita, Sedgwick County, Kansas and that the accompanying plat is a true and correct exhibit of said survey described as follows: The north 1091.37 feet of the west 627 feet of the NE 1/4 of Section 28, T27S, R1W of the 6th P.M., Sedgwick County, Kansas.

7-19-77

Kenneth O. Taylor Civil Engineer  
Kenneth O. Taylor

Know all men by these presents that Unified School District No. 259 by Dr. Don L. Miller, President, has caused the land described in the Civil Engineer's certificate to be platted into a lot and streets to be known as "MARY BENTON ADDITION", Wichita, Sedgwick County, Kansas. The streets are hereby dedicated to and for the use of the public.

All abutter's rights of access to or from Maple Street, over and across the north line of Lot 1 are hereby granted to the City of Wichita.



Unified School District No. 259,  
A Quasi-Municipality  
Dr. Don L. Miller, President  
Dr. Don L. Miller

ATTEST:  
Martin Hartley, Clerk of the Board  
Martin Hartley

State of Kansas, County of Sedgwick, SS.

The foregoing instrument was acknowledged before me this 23<sup>rd</sup> day of August, 1977 by Dr. Don L. Miller, President of Unified School District No. 259, a Quasi-Municipality, on behalf of the Quasi-Municipality.

Eleanor Lundgren, Notary Public  
ELEANOR LUNDGREN

My Commission expires: Sept. 24, 1980

This plat of "MARY BENTON ADDITION", Wichita, Sedgwick County, Kansas has been submitted to and approved by the Wichita-Sedgwick County Metropolitan Area Planning Commission, Wichita, Kansas.

Dated this 23<sup>rd</sup> day of June, 1977.

Wichita-Sedgwick County Metropolitan  
Area Planning Commission  
Margorie L. Taylor Vice-Chairman  
Robert A. Lakin Secretary  
Robert A. Lakin

This plat approved and all dedications shown hereon accepted by the Board of City Commissioners of the City of Wichita, Kansas, this 3<sup>rd</sup> day of JAN, 1978.

Tony Casado Mayor  
Tony Casado  
Donald C. Gisick City Clerk  
Donald C. Gisick

This plat approved and all dedications shown hereon accepted by the Board of County Commissioners of Sedgwick County, Kansas, this 6<sup>th</sup> day of March, 1978.

Tom Scott Chairman  
Tom Scott  
Wesley Patrick Commissioner  
Wesley Patrick  
John Hale Commissioner  
John Hale

ATTEST:  
Dorothy K. White County Clerk  
Dorothy K. White

Entered on transfer record this 6 day of March, 1978.  
Dorothy K. White County Clerk  
Dorothy K. White

State of Kansas, County of Sedgwick, SS.  
This is to certify that this instrument was filed for record in the Register of Deeds Office, at 8:00 o'clock A.m., on the 7<sup>th</sup> day of MARCH, 1978.  
Bette F. McCart Register of Deeds  
Bette F. McCart  
Pat Kettler Deputy  
Pat Kettler

20.00

#373955

This digital plat record accurately reproduces in all details the original plat filed with the Sedgwick County Register of Deeds. Digitized under the supervision of Register of Deeds Bill Meek by Sedgwick County Geographic Information Systems.

Bill Meek, Register of Deeds  
Digitized rendition of original signature