

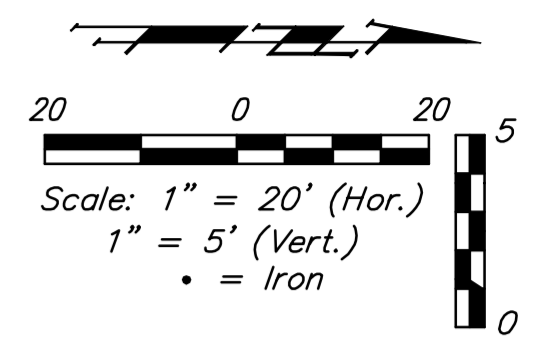
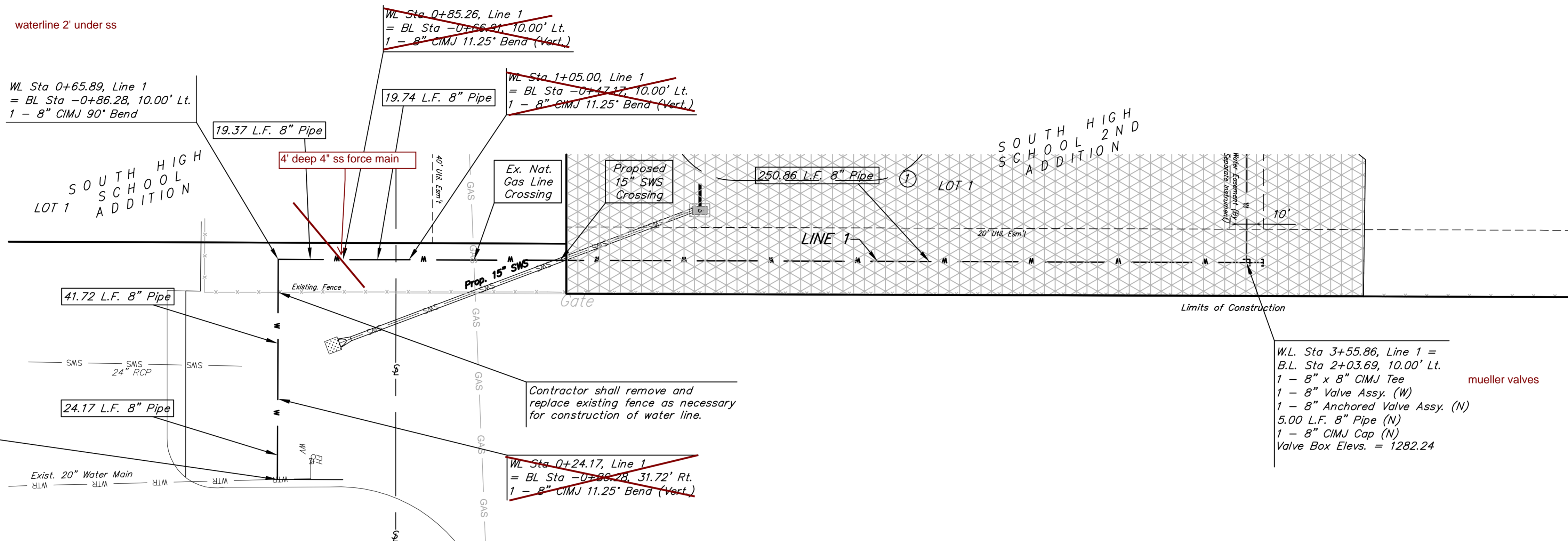
**Benchmarks**

Benchmark #1 - "□" Chiseled on Top of Concrete  
ELEV. = 1285.93 (NAVD 88)

Benchmark #2 - "□" Chiseled on Top of Concrete  
ELEV. = 1284.29 (NAVD 88)

Water main 6' deep to top of pipe

W.L. Sta. 0+00, Begin Line 1  
B.L. Sta. -0+86.28, 55.89' Rt.  
Tap Existing 20" Water Main  
\*1-20" x 8" Tapping Sleeve  
\*1-8" Tapping Valve  
\*1-6" Valve Box  
Valve Box Elev. = 1282.45 To be 1-8" CIMJ 11.25' Bend (Vert.)  
Contractor to Verify Depth & Location of Existing 20" Water Line Prior to Construction.  
\*Furnished & Installed by City of Wichita Water Dept. Contractor to Reimburse Water Dept. \$1,830 for Tapping Sleeve & Valve Installation.



**AS BUILTS**

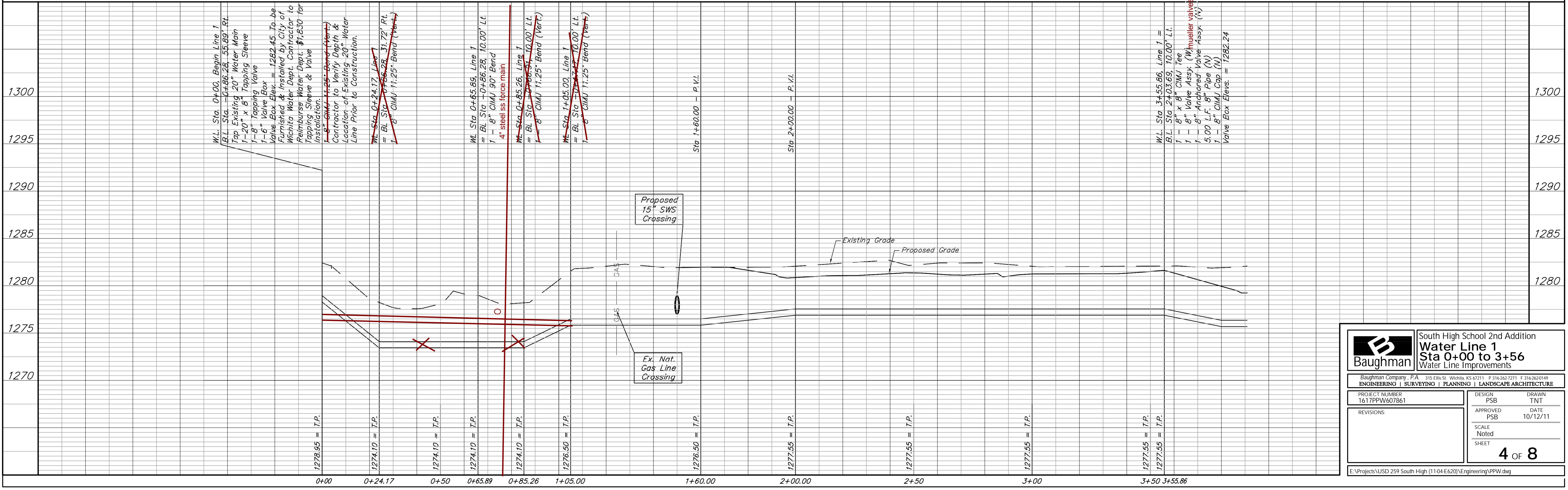
**kemiller**  
engineering

516 S. Market  
Wichita, KS 67202

(316)264-0242



Baseline = Southeast Corner of Lot 1 Block 1 South High School 2nd Addition



**Baughman** South High School 2nd Addition  
**Water Line 1**  
**Sta 0+00 to 3+56**  
**Water Line Improvements**

Baughman Company, P.A. 315 Ellis St. Wichita, KS 67211 P 316.263.7271 F 316.262.0149  
ENGINEERING | SURVEYING | PLANNING | LANDSCAPE ARCHITECTURE

PROJECT NUMBER: 1617PPW607861 DESIGN: PSB DRAWN: TNT  
APPROVED: PSB DATE: 10/12/11  
SCALE: Noted  
SHEET: 4 OF 8

REVISIONS:

E:\Projects\USD 259 South High (1104 E620)\Engineering\PPW.dwg