

Benchmarks

Benchmark #1 - "□" Chiseled on Top of Concrete
ELEV. = 1285.95 (NAVD 88)

Benchmark #2 - "□" Chiseled on Top of Concrete
ELEV. = 1284.29 (NAVD 88)

W.L. Sta. 0+00, Begin Line 1
B.L. Sta. -0+86.28, 55.89' Rt.
Tap Existing 20" Water Main
*1-20" x 8" Tapping Sleeve
*1-8" Tapping Valve
*1-6" Valve Box
Valve Box Elev. = 1282.45 To be 1-8" CIMJ 11.25" Bend (Vert.)
Contractor to Verify Depth & Location of Existing 20" Water Line Prior to Construction.
*Furnished & Installed by City of Wichita Water Dept. Contractor to Reimburse Water Dept. \$1,830 for Tapping Sleeve & Valve Installation.

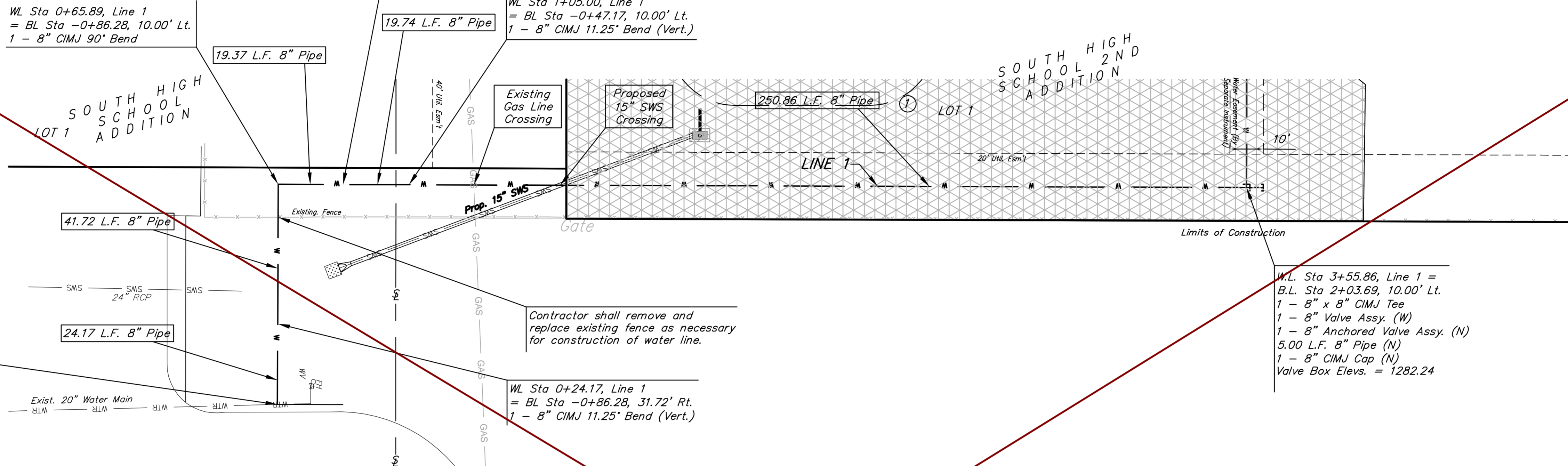
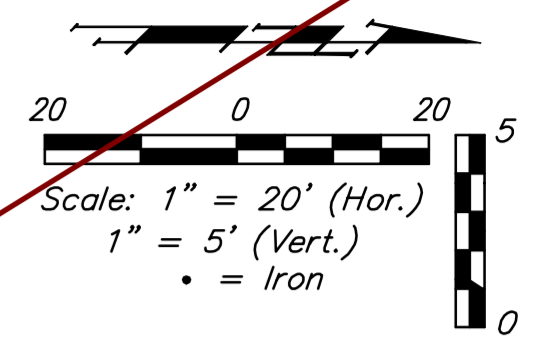
W.L. Sta 0+65.89, Line 1
= B.L. Sta -0+86.28, 10.00' Lt.
1 - 8" CIMJ 90° Bend

W.L. Sta 0+85.26, Line 1
= B.L. Sta -0+66.91, 10.00' Lt.
1 - 8" CIMJ 11.25° Bend (Vert.)

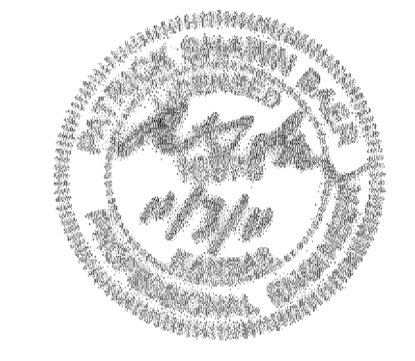
W.L. Sta 1+05.00, Line 1
= B.L. Sta -0+47.17, 10.00' Lt.
1 - 8" CIMJ 11.25° Bend (Vert.)

W.L. Sta 3+55.86, Line 1 =
B.L. Sta 2+03.69, 10.00' Lt.
1 - 8" x 8" CIMJ Tee
1 - 8" Valve Assy. (W)
1 - 8" Anchored Valve Assy. (N)
5.00 L.F. 8" Pipe (N)
1 - 8" CIMJ Cap (N)
Valve Box Elev. = 1282.24

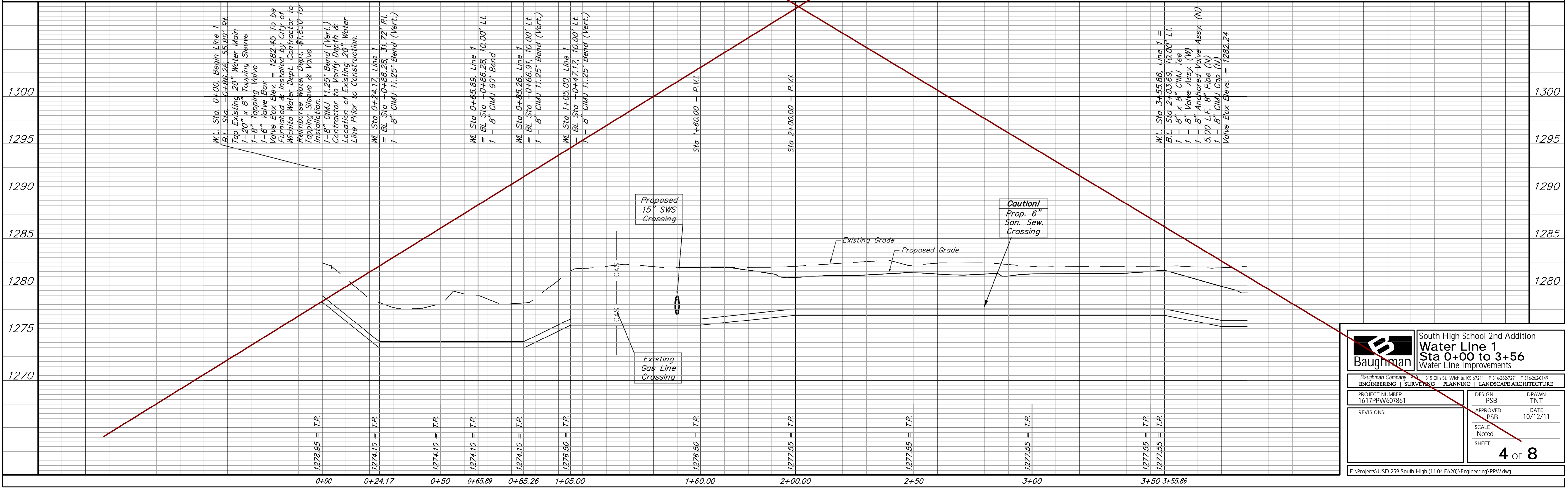
W.L. Sta 0+24.17, Line 1
= B.L. Sta -0+86.28, 31.72' Rt.
1 - 8" CIMJ 11.25° Bend (Vert.)



Contractor shall remove and replace existing fence as necessary for construction of water line.



Baseline = Southeast Corner of Lot 1 Block 1 South High School 2nd Addition



		South High School 2nd Addition Water Line 1 Sta 0+00 to 3+56 Water Line Improvements	
		ENGINEERING SURVEYING PLANNING LANDSCAPE ARCHITECTURE	
PROJECT NUMBER 1617PPW607861	DESIGN PSB	DRAWN TNT	DATE 10/12/11
REVISIONS:	APPROVED PSB	SCALE Noted	
		4 OF 8	

E:\Projects\USD 259 South High (11.04 E620)\Engineering\PPW.dwg