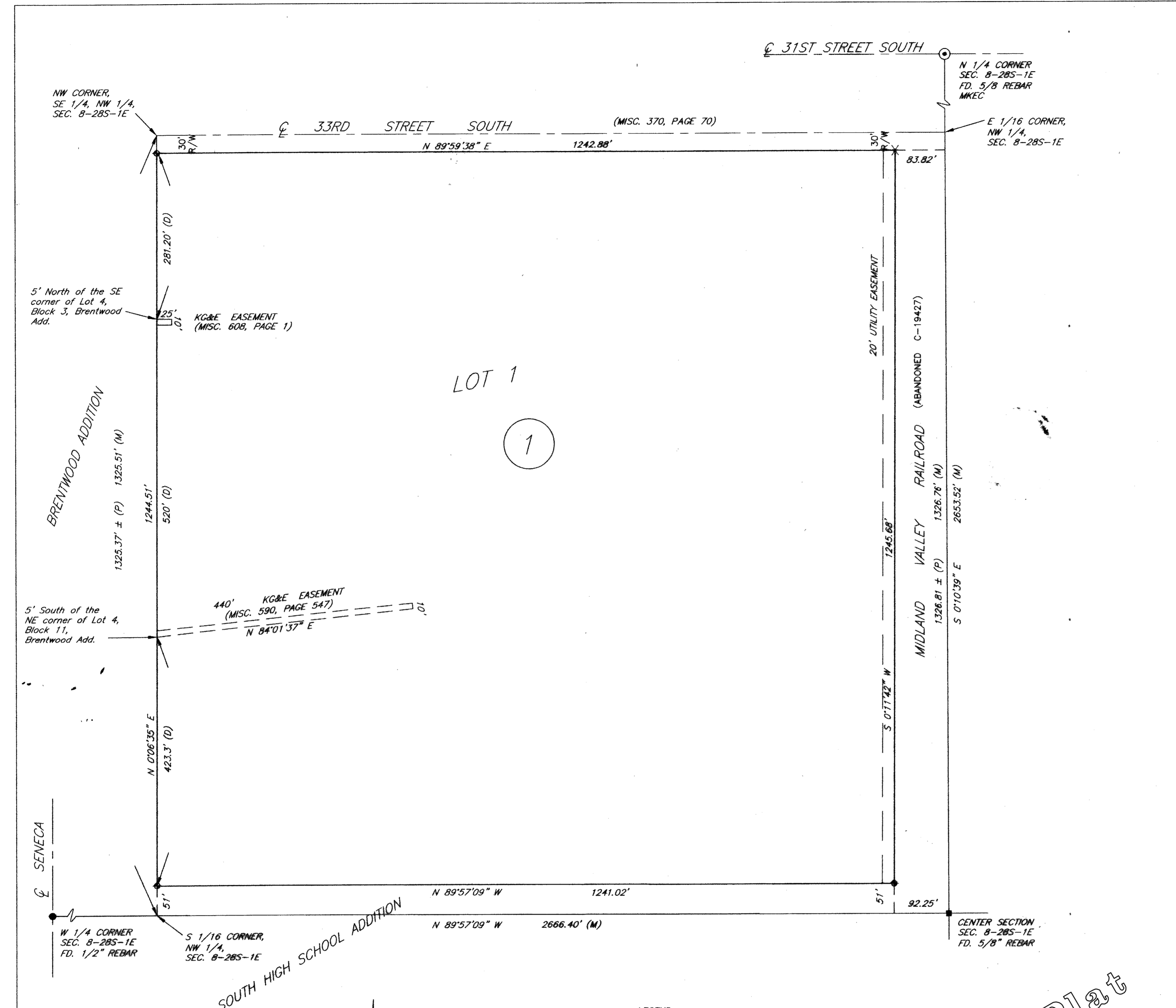


SOUTH HIGH SCHOOL SECOND ADDITION TO WICHITA, SEDGWICK COUNTY, KANSAS

Southeast Quarter of the Northwest Quarter of Section 8, Township 28 South, Range 1 East of the 6th. P.M.



State of Kansas) ss
County of Sedgwick)

I, Bradley C. Ward, a registered land surveyor in aforesaid County and State, do hereby certify that this map or plat and the survey on which it is based was made in accordance with the Minimum Standards for Boundary Surveys.

Said survey is true and correct to the best of my knowledge. All monuments were either found or set.

LEGAL DESCRIPTION

The Southeast 1/4 of the Northwest 1/4 of Section 8, Township 28 South, Range 1 East of the 6th Principal Meridian, Sedgwick County, Kansas, EXCEPT the North 30 feet thereof, and EXCEPT that part platted as South High School Addition, and EXCEPT the Right of Way of the Midland Valley Railroad.



Bradley C. Ward, L.S. #920 Date 1-6-04

State of Kansas) ss
County of Sedgwick)

Know all men by these presents, that we, the undersigned, have caused the land described in the surveyor's certificate to be platted into Lot and Block to be known as South High School Second Addition, Sedgwick County, Kansas. A drainage plan has been developed for the plot and all drainage easements, rights of way, or reserves shall remain at established grades or as modified with the approval of the applicable City or County Engineer, and unobstructed to allow for the conveyance of stormwater. The land contained herein is held and shall be conveyed subject to any restrictions, reservations, and covenants on file or hereafter filed in the office of the Register of Deeds of Sedgwick County, Kansas.

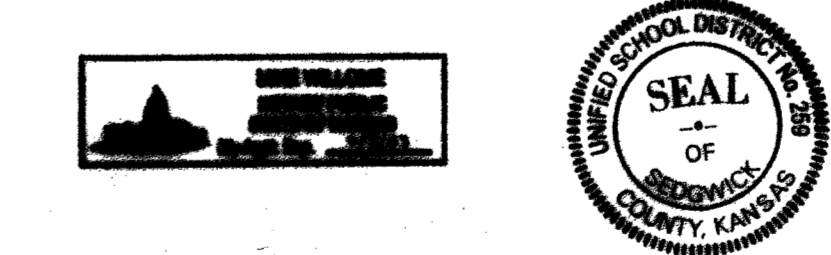
By: Michael Kinard 2/9/04 Date
USD. 259
Michael Kinard (Pressman, USD 259)

State of Kansas) ss
County of Sedgwick)

This instrument was acknowledged before me on this 4th day of February, 2004, by Michael Kinard (Pressman # 259)

Mike Williams
Notary Public Mike Williams

My Commission Expires: 6/9/07



State of Kansas) ss
City of Wichita)

This plat of South High School Second Addition, Wichita, Sedgwick County, Kansas, has been submitted to and approved by the Wichita-Sedgwick County Metropolitan Area Planning Commission, Wichita, Kansas.

Dated this 2nd day of ~~September~~ February, 2004, Wichita-Sedgwick County Metropolitan Area Planning Commission.

Bernard Hempton Chair
John L. Schlegel Secretary



State of Kansas) ss
City of Wichita)

This plat approved and all dedications shown hereon accepted by the City Council of the City of Wichita, Kansas, this 2nd day of ~~March~~ February, 2004.

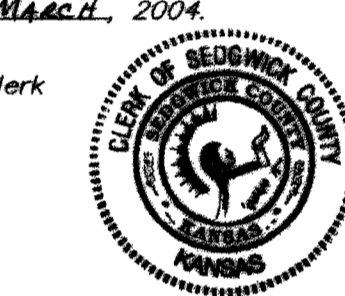
at the Direction of the City Council

Carlos Moyano Mayor

Karen Schofield City Clerk

Entered on transfer record this 24th day of March, 2004.

Don Brace County Clerk



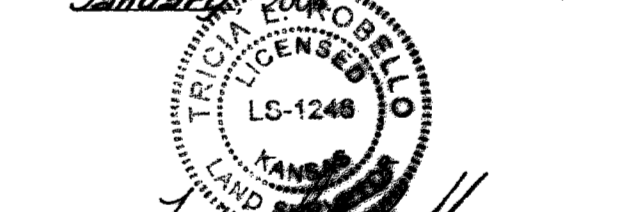
State of Kansas) ss
County of Sedgwick)

This is to certify that this instrument was filed for record in the Register of Deeds Office, at Wichita on the 2nd day of February, 2004, and is duly recorded.

Linda Kizzire Register of Deeds

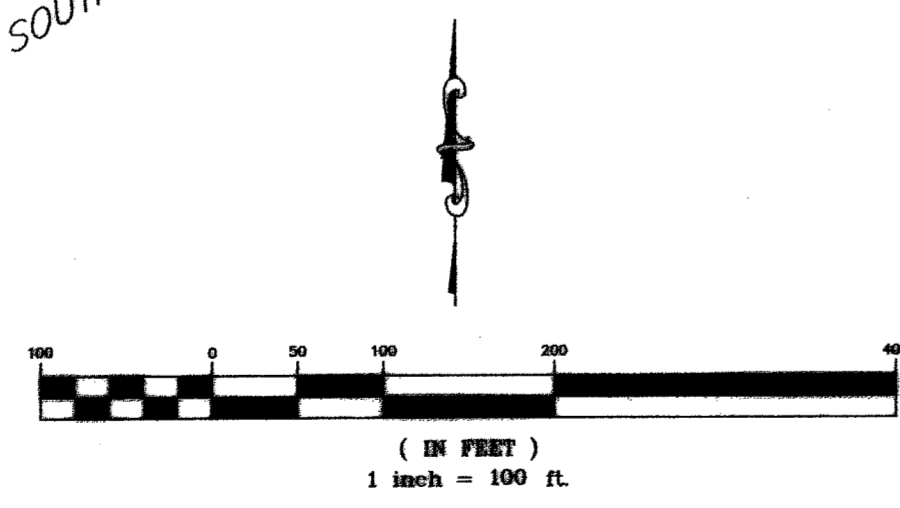
Linda Kizzire Deputy

Reviewed in accordance with K.S.A. 58-2005 on this 12th day of ~~February~~ February, 2004.



Tricia L. Robello, L.S. #1246
Deputy County Surveyor
Sedgwick County, Kansas

- LEGEND**
- ⊙ 5/8" Rebar in Thimble (found) MKEC
 - 1/2" Rebar in Thimble (found)
 - 1/2" Iron Pipe
 - X "X" Cut (set)
 - 5/8" Rebar (found)
 - ◆ 5/8" Rebar (set) B. Ward L.S. #920
 - P Platted
 - M Measured
 - D Deeded



Benchmark:
"□" cut on back of curb 4' North of North end of the Northeast return at 33rd and Exchange.
Elevation = 93.67 City Datum

Sedgwick County Register of Deeds
DDC #FLM-PG-28553426
Receipt # 1547354
Pages Recorded 1
CASHIER Initials: SL
Authorized By: [Signature]
Date Recorded: 3/28/2004 8:08:59 PM

Copy of Plat
Not to Scale

