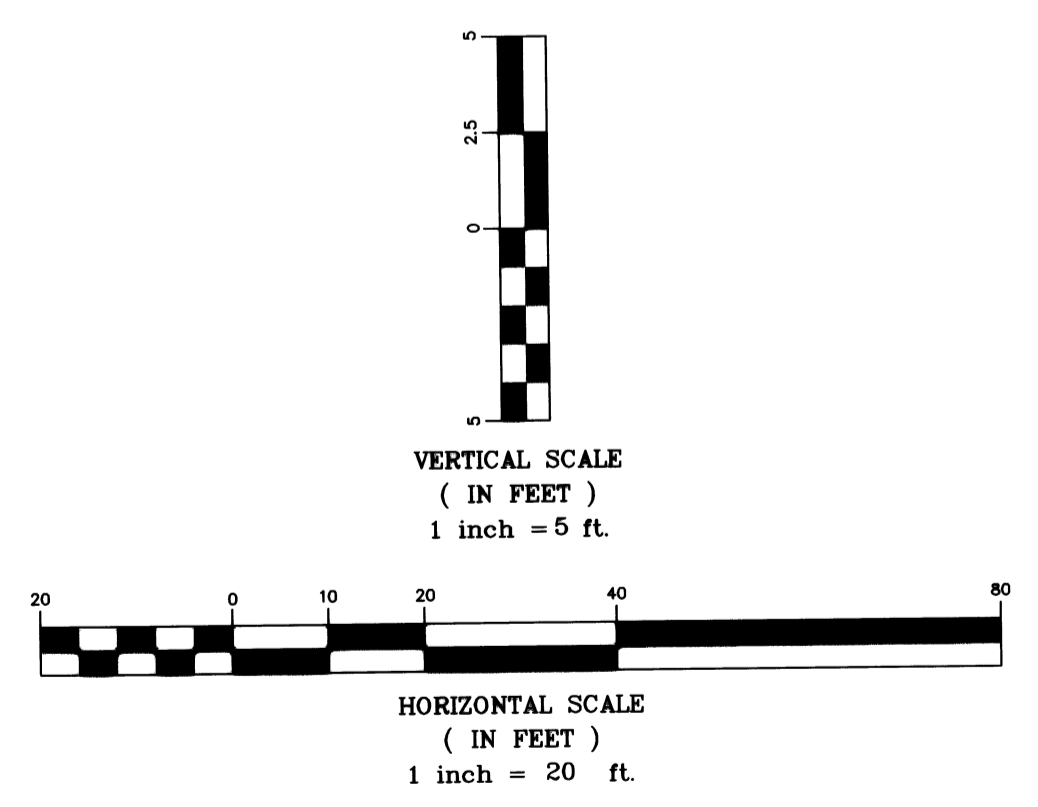
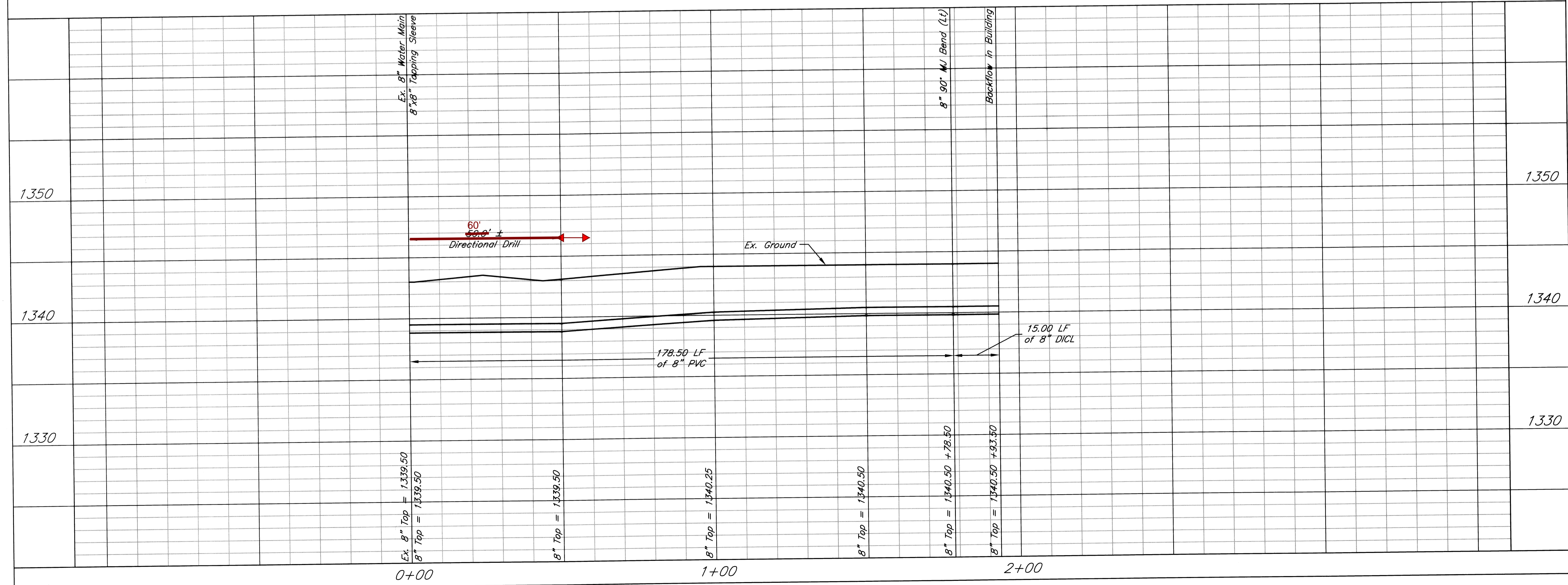
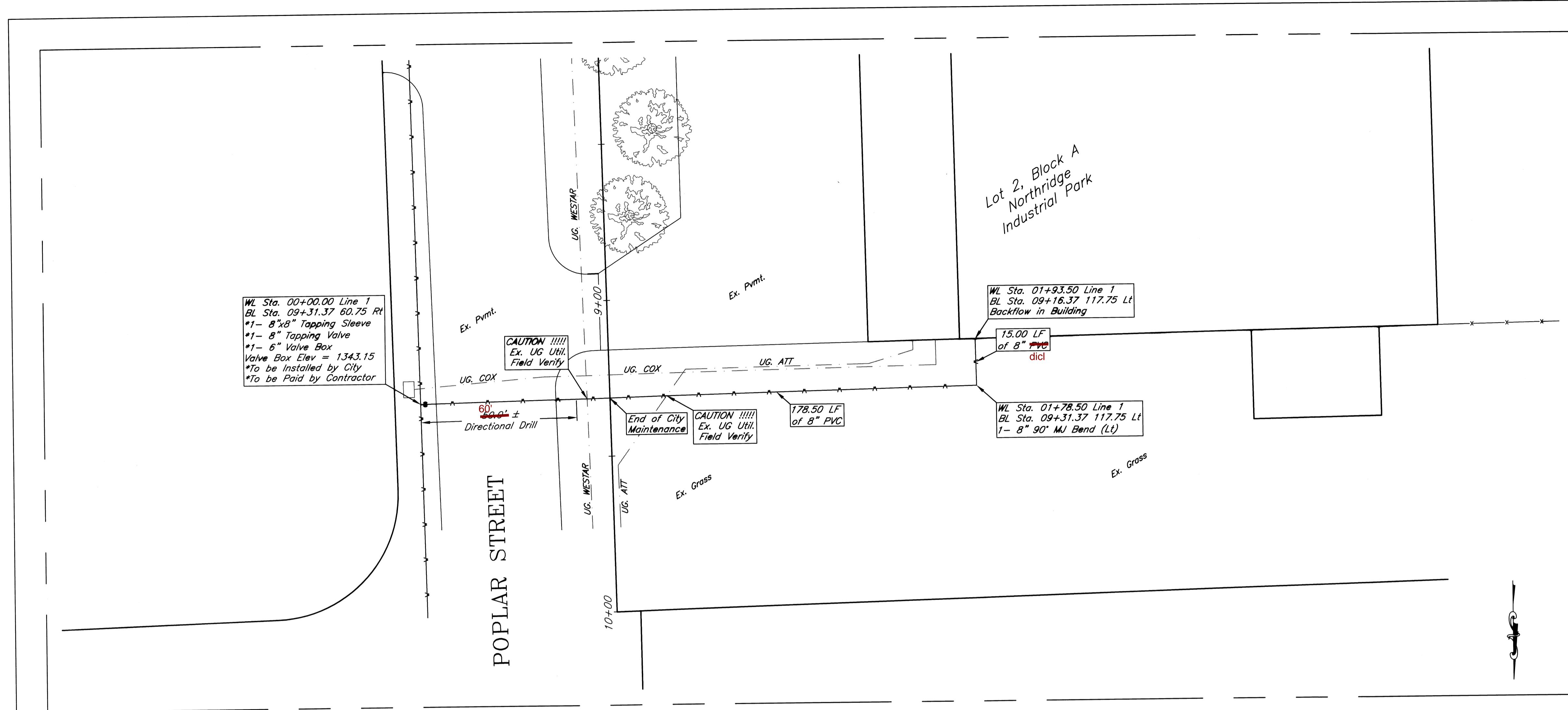


General Notes:

1. Directional drill under Poplar Street pavement.
2. Refer to cover sheet for Fire Department Connection and existing fire hydrant locations.



Allied Oil Warehouse
Line 1
Wichita, Kansas



PROJECT NUMBER				SHEET 2.0
KEM NO. 11145	FILE	DATE 12/29/11	DESIGN KM	
DESIGN KM	DRAWN NS	REVISED		

516 S. Market, Wichita, KS 67202 (316)264-0242