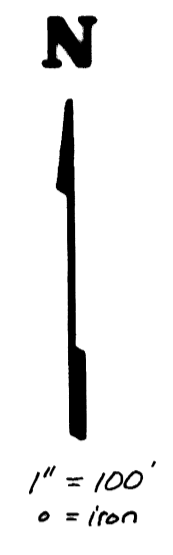
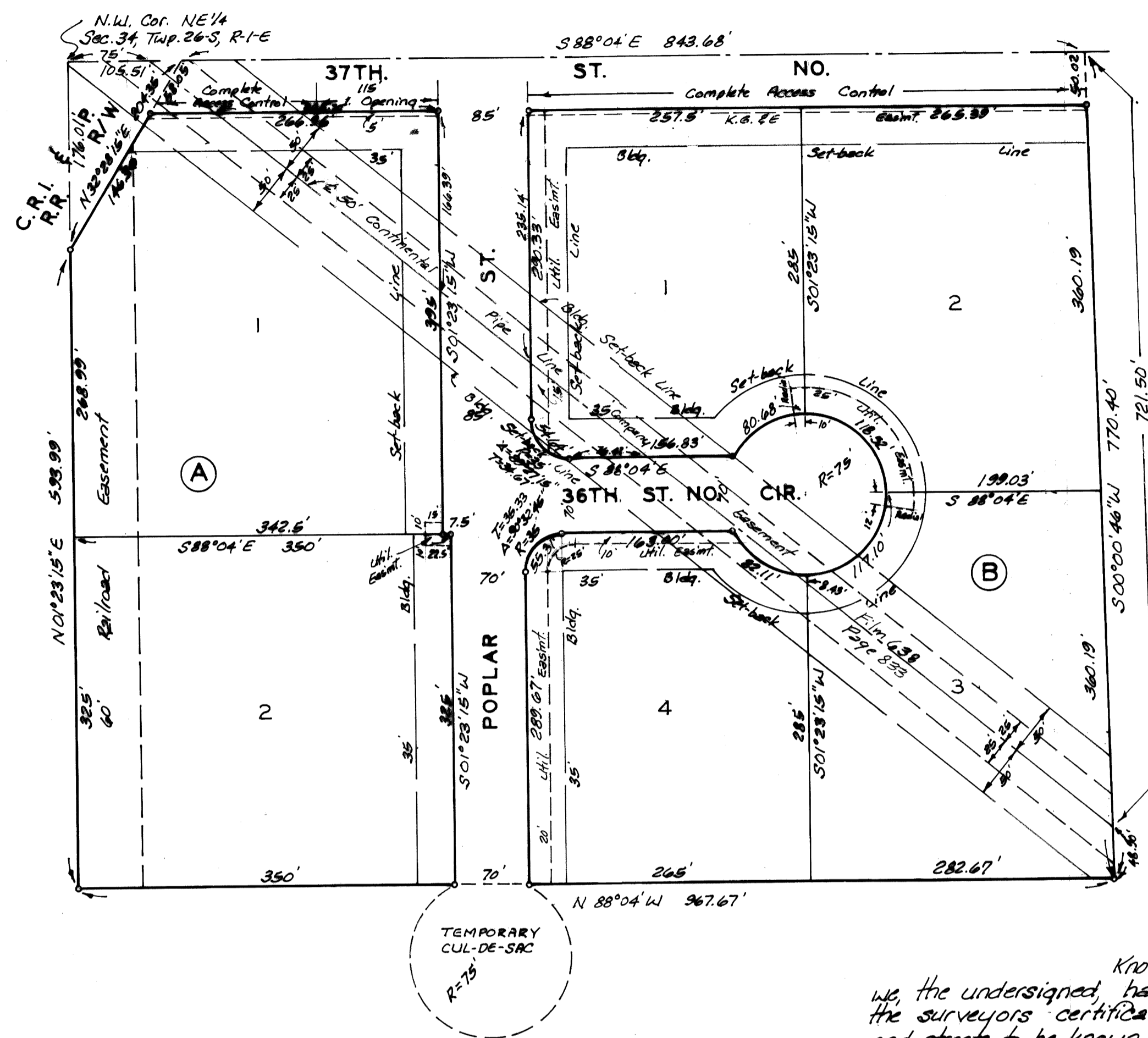
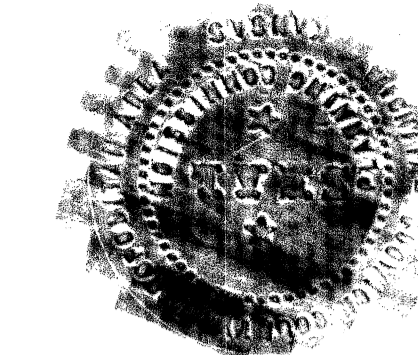


NORTHRIDGE INDUSTRIAL PARK

WICHITA, KANSAS.



This plat of "NORTHRIDGE INDUSTRIAL PARK", Wichita, Kansas, has been submitted to and approved by the Wichita-Sedgewick County Metropolitan Area Planning Commission, Wichita, Kansas, dated this 14th day of July 1983.

Wichita-Sedgewick County Metropolitan Area Planning Commission.

David Bayne Chairman
David Bayne

Robert A. Lakin Secretary
Robert A. Lakin

This plat approved and all dedications shown hereon accepted by the Board of Commissioners of the City of Wichita, Kansas, this 20th day of MARCH 1984.

Marjorie Wright Mayor
Marjorie Wright

Donald C. Erick City Clerk
Donald C. Erick

This plat approved and all dedications shown hereon accepted by the Board of Commissioners, Sedgewick County, Kansas, this 27 day of JUNE 1984.

Jack Spratt Chairman
Jack Spratt

Tom Scott Commissioner
Tom Scott

Donald E. Gray Commissioner
Donald E. Gray

Dorothy K. White County Clerk
Dorothy K. White

#698610

Entered on transfer record this 27 day of JUNE 1984.

Dorothy K. White County Clerk
Dorothy K. White

state of Kansas? S.S. This is to certify that this plat has been filed to record in the office of the Register of Deeds this 28th day of JUNE 1984, at 11:00 o'clock A.M.; and is duly recorded.

Bette F. McCall Register of Deeds
Bette F. McCall

Pat Kettler Deputy
Pat Kettler

Know all men by these presents, that we, the undersigned, have caused the land described in the surveyors' certificate to be platted into Lots, Blocks and streets to be known as "NORTHRIDGE INDUSTRIAL PARK", Wichita, Kansas. The streets are hereby dedicated to and for the use of the public. All abutters rights of access to or from 37th St. No. over and across the north line of Lot 1, Block A, and Lots 1 and 2, Block B, are hereby granted to the City of Wichita, provided however that Lot 1, Block A shall have access to 37th St. No. at 1 point over the east 116 feet of the north line as shall be determined by the City Engineer of the City of Wichita, Kansas. The K.E.E. easements and the utility easements are hereby granted as indicated for the construction and maintenance of all public utilities. The railroad easement is hereby granted for railroad spur purposes.

Leasing & Rental Service, Inc.
Leslie Ridd President
Leslie Ridd

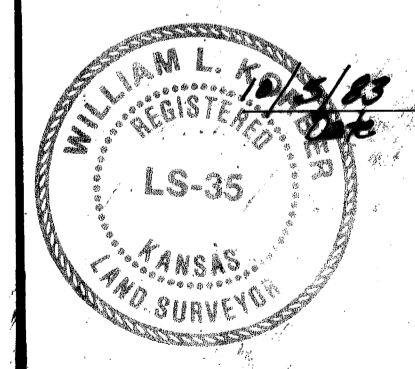
state of Kansas? S.S. The foregoing instrument was acknowledged before me, this 4th day of October 1983, by Leslie Ridd, President of Leasing & Rental Service, Inc. on behalf of the corporation.

Mark A. Savoy Notary Public
My App't. Exp. 12/31/84 Mark A. Savoy

State of Kansas? S.S. We, Baughman Company, P.A. Surveyors in aforesaid county and state do hereby certify that we have surveyed and platted "NORTHRIDGE INDUSTRIAL PARK", Wichita, Kansas and that the accompanying plat is a true and correct exhibit of the property surveyed, described as commencing at the N.W. Corner of the NE 1/4 of Sec. 34, Twp. 26 S, R-1 E of the 6th P.M., Sedgewick County, Kansas; thence east along the north line of said NE 1/4 105.51 feet to the easterly Right-of-Way line of the Chicago Rock Island and Pacific Railroad for a place of beginning; thence continuing east along the north line of said NE 1/4 843.68 feet to the N.W. Corner of the East 50 Acres of the NE 1/4 of said NE 1/4; thence south along the west line of said East 50 Acres 770.40 feet; thence west parallel with the north line of said NE 1/4 967.67 feet to the west line of said NE 1/4; thence north along the west line of said NE 1/4 393.99 feet to the easterly Right-of-Way line of said Railroad, said point being 176.01 feet south of the N.W. Corner of said NE 1/4; thence northeast along said Railroad Right-of-Way, 204.35 feet to the place of beginning.

Baughman Company, P.A.

William L. Korber Surveyor
William L. Korber



20.00