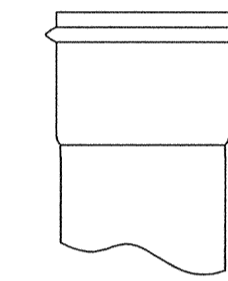


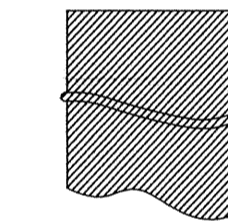
**CLEAN-OUT DETAIL**  
N.T.S.



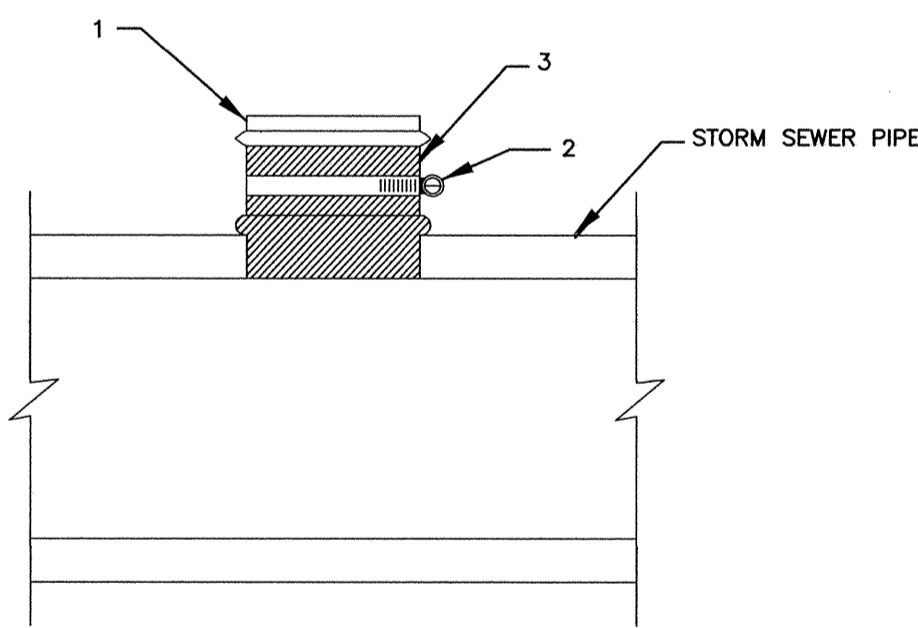
1. PVC HUB SHALL CONFORM TO ASTM 3034, SDR 35 DRIVE INTO CENTER OF RUBBER SLEEVE AFTER SLEEVE IS PLACED IN HOLE.



2. STAINLESS STEEL BAND SECURES UPPER HALF OF RUBBER SLEEVE TO THE PVC HUB. STAINLESS STEEL BAND SHALL BE 300 SERIES, 1/8\"/>

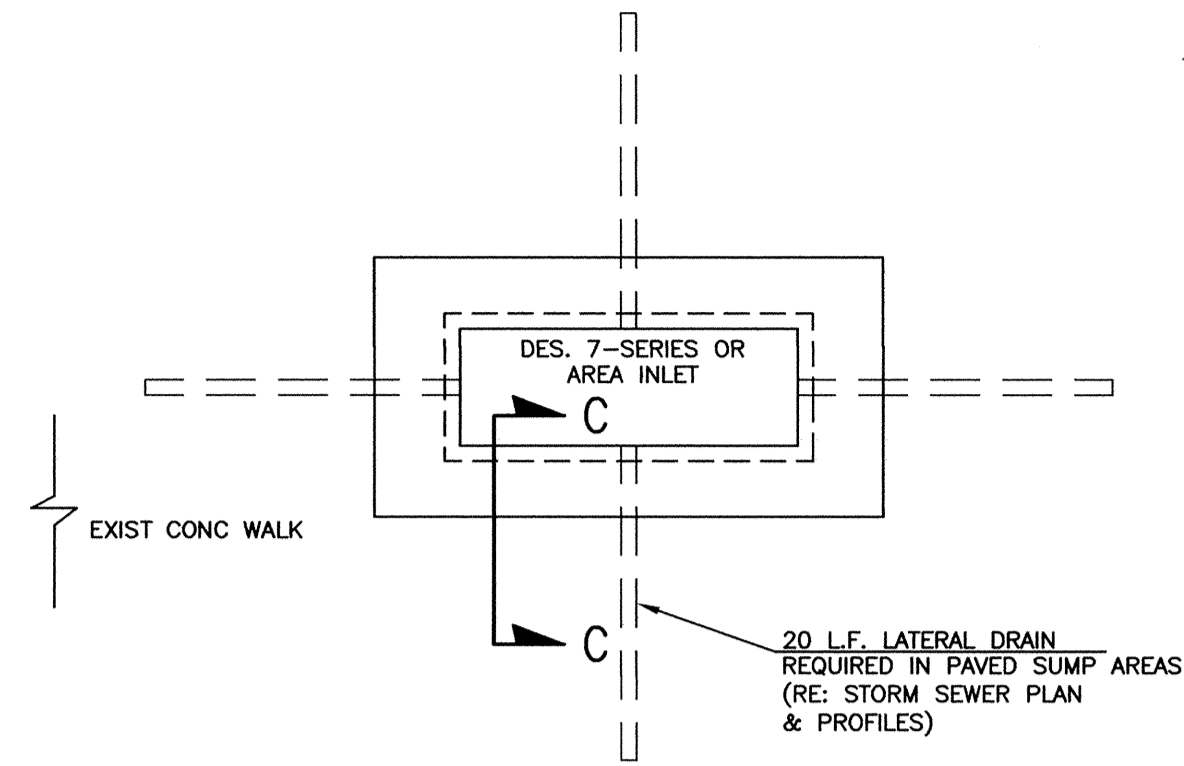


3. COMPLETE RUBBER SLEEVE INCLUDES A MOLDED SEGMENT THAT HOLDS IT IN PLACE.

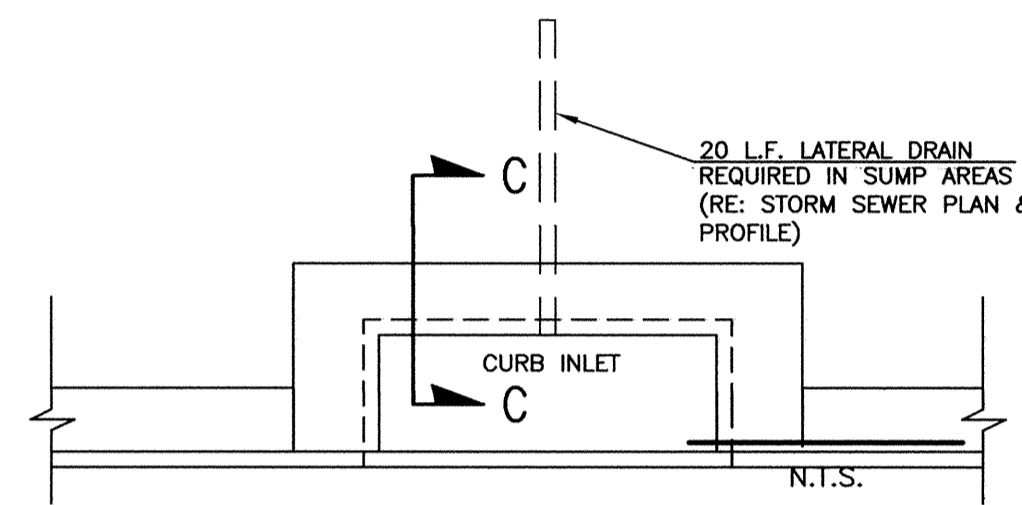


1. ALL INSERTA-TEE HOLES SHALL BE MACHINE DRILLED AND CORED. INSERTA-TEE ARE ALLOWED IN NEWLY CONSTRUCTED STORM SEWER 12\"/>
- 2. STORM SEWER MAIN SHALL BE TWO SIZES (NOMINAL I.D.) LARGER THAN THE INSERTA-TEE.
- 3. HOST PIPE SHALL BE MINIMUM .35\"/>

**INSERTA-TEE DETAIL**  
N.T.S.



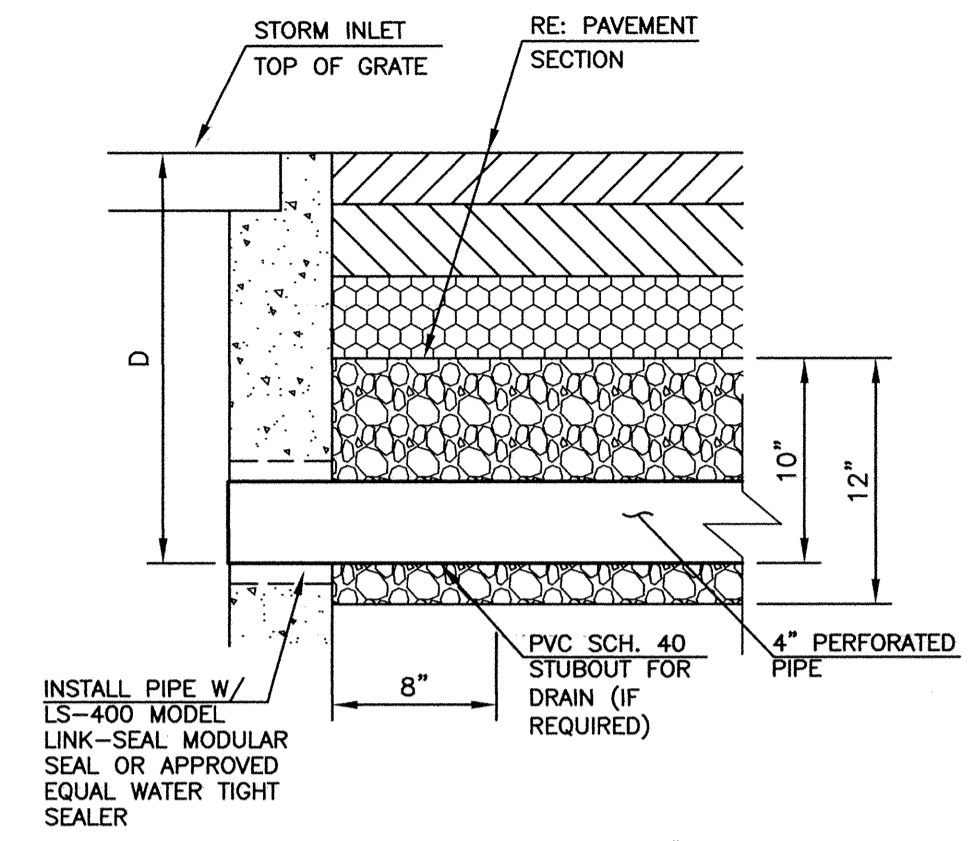
**INFILTRATION DRAINS AT AREA INLET**  
N.T.S.



**INFILTRATION DRAINS AT CURB INLET**  
N.T.S.

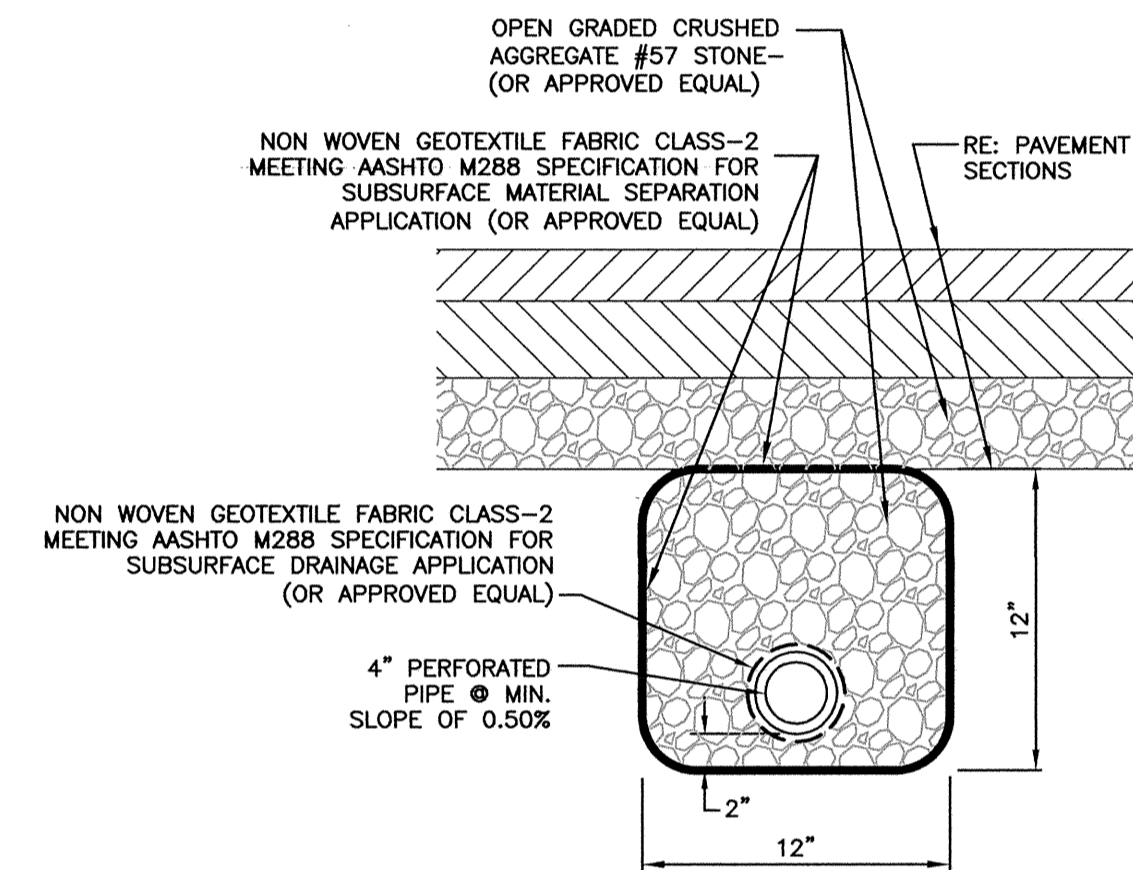
**GENERAL NOTES — INFILTRATION DRAINS**

1. INFILTRATION DRAINS IN LANDSCAPE AREAS NOT REQUIRED.
2. STORM SEWER SYSTEM SHALL BE INSTALLED PRIOR TO THE INSTALLATION OF INFILTRATION DRAINS. CONTRACTOR SHALL ESTABLISHED LAYOUT OF THE INFILTRATION DRAINS WITHOUT CAUSING ANY CONFLICT WITH THE PROPOSED STORM SEWER SYSTEM AND OTHER UNDERGROUND UTILITIES. INFILTRATION DRAINS CAN BE INSTALLED NEXT TO THE STORM SEWER ENTERING/LEAVING THE INLET.

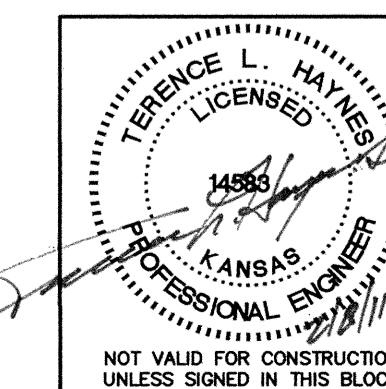


D = PAVEMENT SECTION+10"

**SECTION C-C**  
N.T.S.



**INFILTRATION DRAIN DETAIL**  
N.T.S.



<b>MISCELLANEOUS STORM SEWER DETAILS</b>		
MARKET STORE #5860-00		
HARRY STREET & WEBB ROAD WICHITA, KANSAS		
SMC Consulting Engineers, P.C. 815 West Main - Oklahoma City, OK 73106 PH: 405-232-7715 Fax: 405-232-7859		
KANSAS CERTIFICATE OF AUTHORIZATION NO. E-335 EXP. DEC. 2011		
No.	Revision	By Date
1	Revised per city's comments	KST 11/01/10
2	MM OIB REVIEW	KST 01/17/11
3	MM OIB	KST 01/31/11
DATE: 10/04/10		SCALE:
DRAWN BY: KST		NTS
PROJECT NO.: 4946.00		SHEET NO.
ENGINEER: TERENCE L. HAYNES, P.E. #14583		C-9.8