

STA. 10+00.0, LINE 6 INSTALL
15" END SECTION
N=1701388.42, E=1685658.40

EXISTING POND
NP=1360.4
BFE=1367.8

REGENCY LAKES COMMERCIAL
3RD ADDITION
Reserve
"A"

STA. 10+56.0, LINE 6
INSTALL TYPE 1A CURB
INLET (5'X3')
INLET TOP=1368.00
PROVIDE SEDIMENT BARRIER
N=1701362.76, E=1685608.71

STA. 11+31.7, LINE 6
CONST. DOUBLE DROP INLET
(2'X4') 1367.56 A.B.
TOP=1367.65
PROVIDE SEDIMENT BARRIER
N=1701325.21, E=1685543.37

SMWH TOP=1366.54
FL 15" S=1362.44

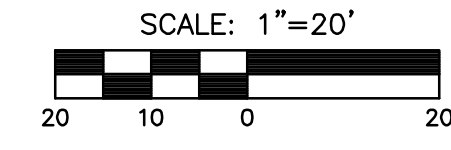
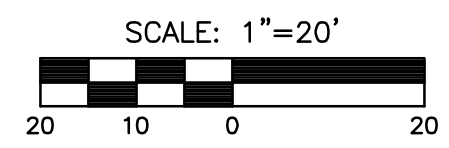
STA. 12+67.2, LINE 6
INSTALL DOUBLE DROP INLET (2'X4')
INLET TOP=1367.26
PROVIDE SEDIMENT BARRIER
N=1701264.59, E=1685422.43

STA. 10+00.0, LINE 7=
STA. 11+57.4, LINE 5
CONNECT TO INLET
TOP=1367.50
PROVIDE SEDIMENT BARRIER
N=1701382.26, E=1685259.91

CAUTION!! EXIST. 8"
WATER CROSSING

CAUTION!! PROP. 6"
SAN. SEW. CROSSING

STA. 11+19.5, LINE 7
INSTALL CLEANOUT
TOP=1369.5+/-
TOP OF CLEANOUT TO MATCH
PROP. SIDEWALK
N=1701352.60, E=1685144.23



AS-BUILT PLANS - FEB. 2012

INSPECTED BY: TIM TEACHOUT, MKEC ENGINEERING
CONSULTANTS, INC.
CONSTRUCTED BY: MIES CONSTRUCTION

PLAN LINE 6

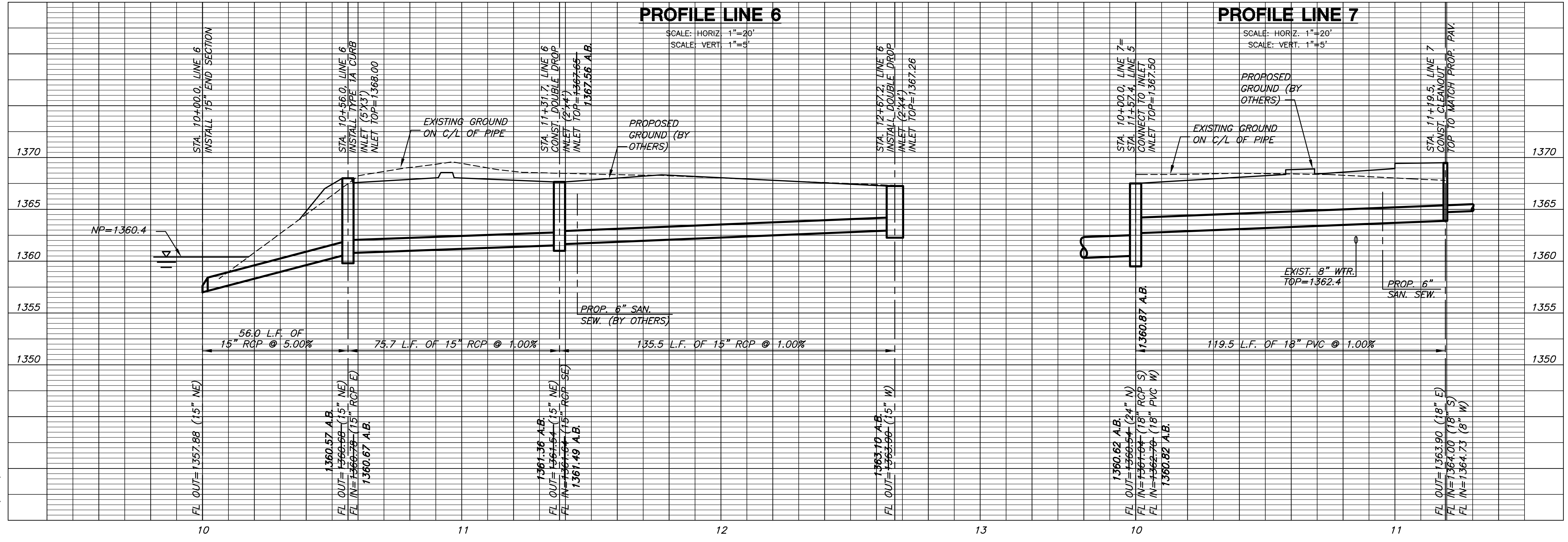
PLAN LINE 7

PROFILE LINE 6

SCALE: HORIZ. 1"=20'
SCALE: VERT. 1"=5'

PROFILE LINE 7

SCALE: HORIZ. 1"=20'
SCALE: VERT. 1"=5'



STORM WATER SEWER
CABELA'S INC.
REGENCY LAKES COMMERCIAL 2ND ADDITION

LINES 6 & 7
SHEET TITLE
0030PPD (607861)
PROJECT NUMBER

SPE / DM / MAB
DESIGNED DRAWN CHECKED

ISSUED
May 2011
REVISED
AS-BUILTS 02/2012

SHEET NO.
4 of 4

PLOTED: Tuesday, February 14, 2012 @ 02:11PM

J:\CIVIL\10617-CABELA'S\PRIVATE\PROJECT\10617_04.DWG