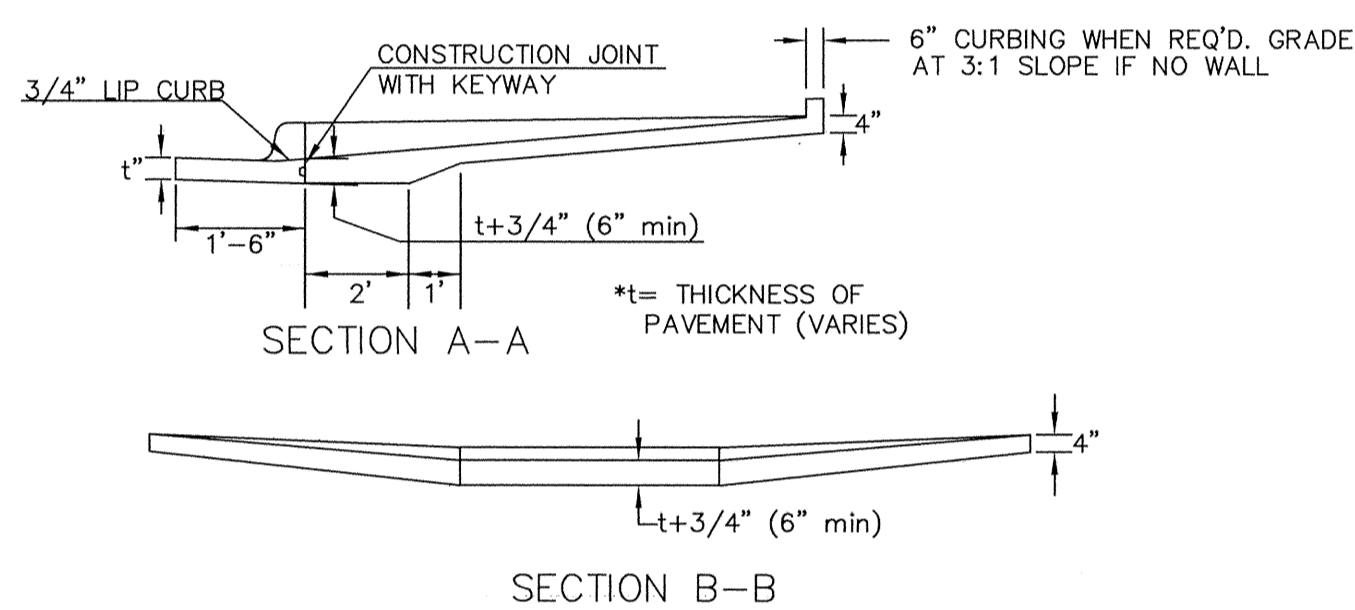
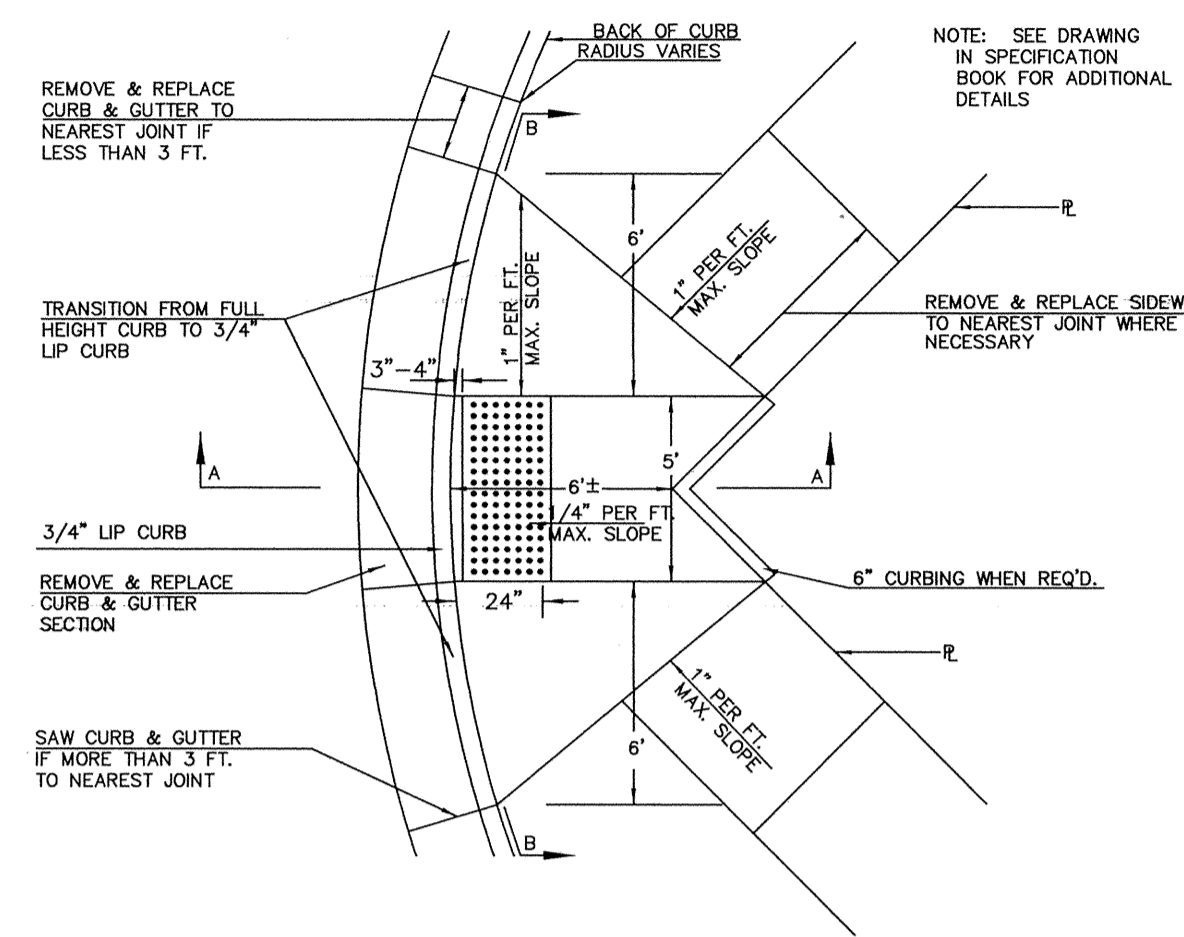
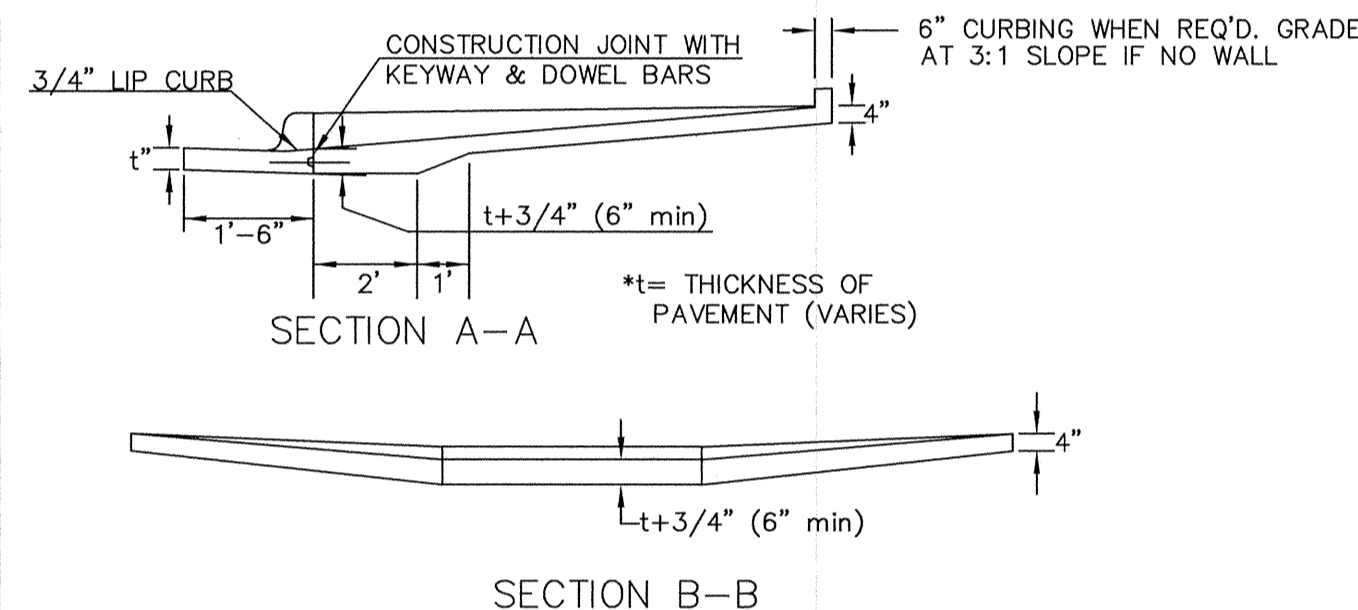
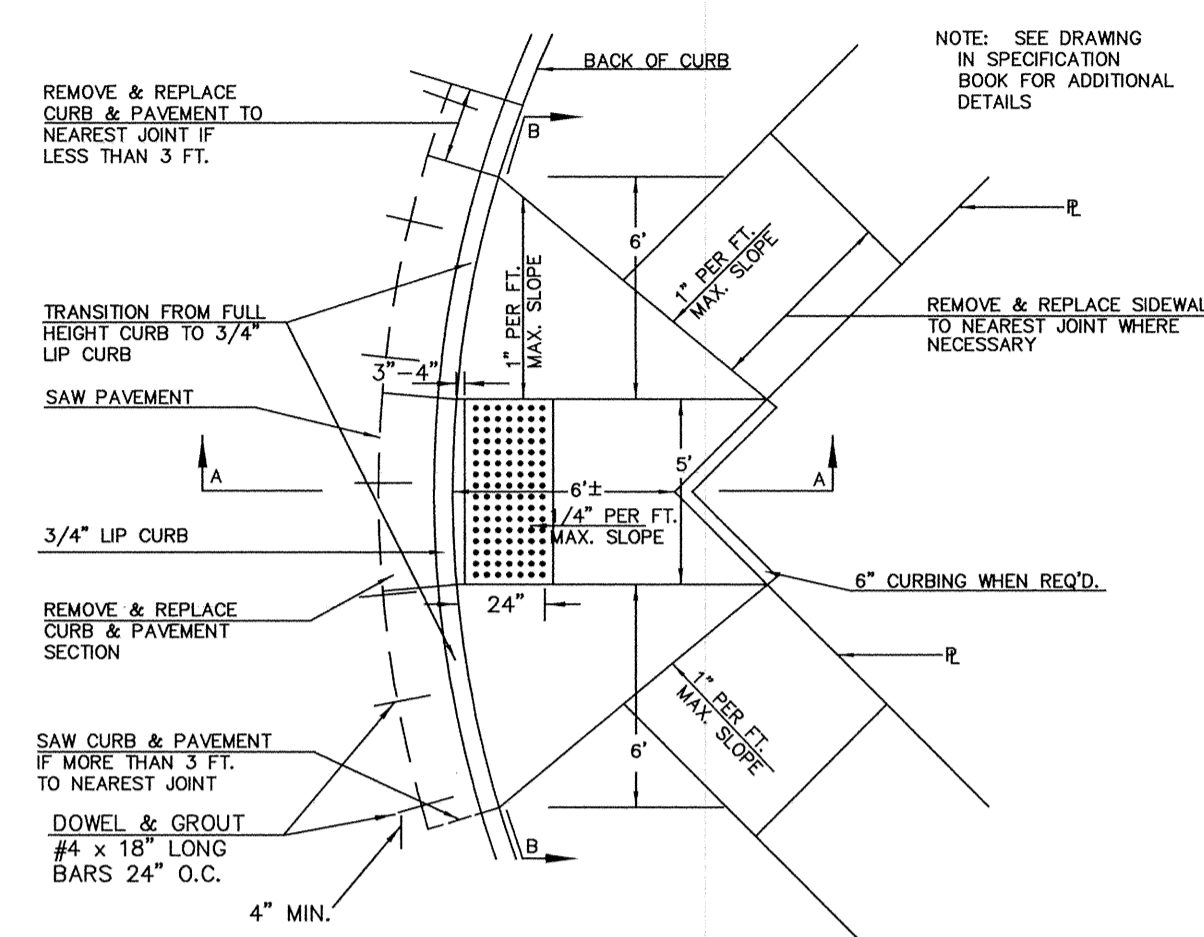


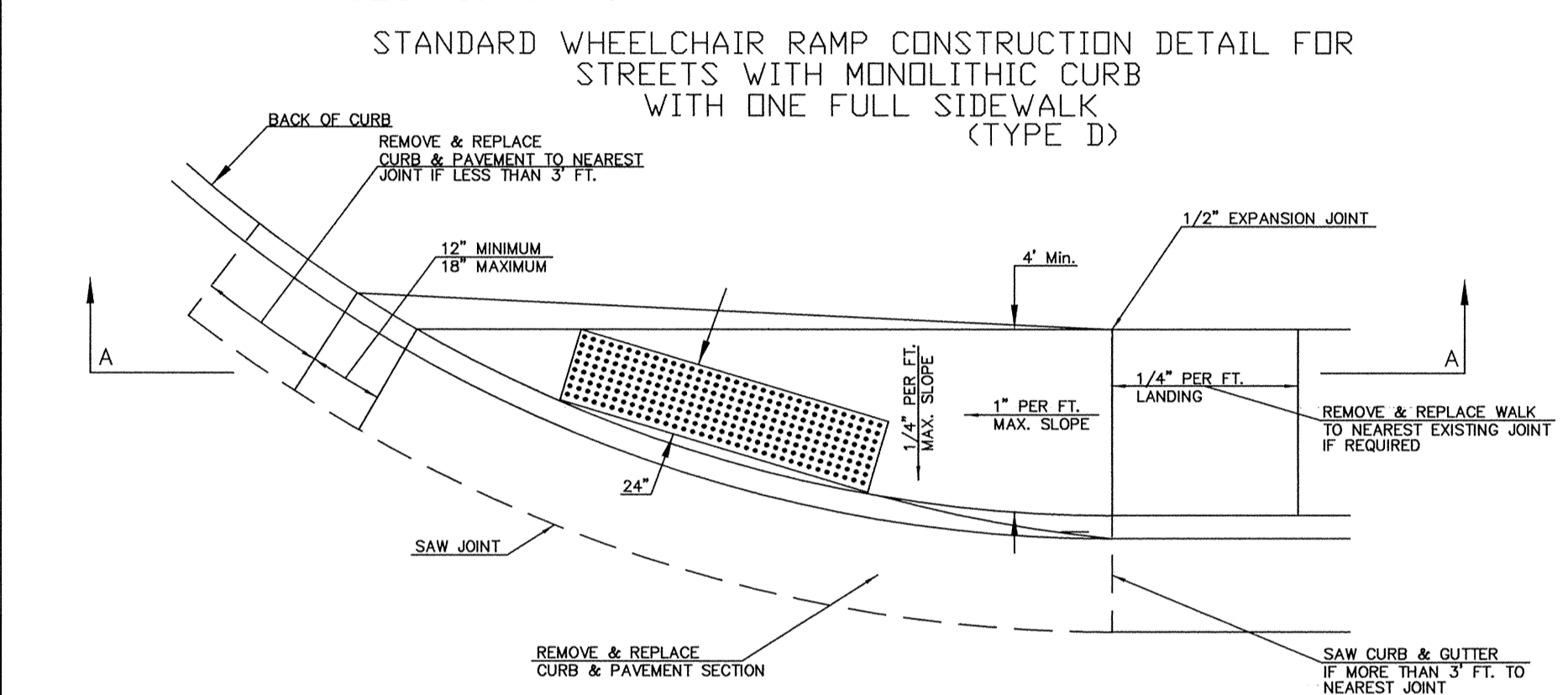
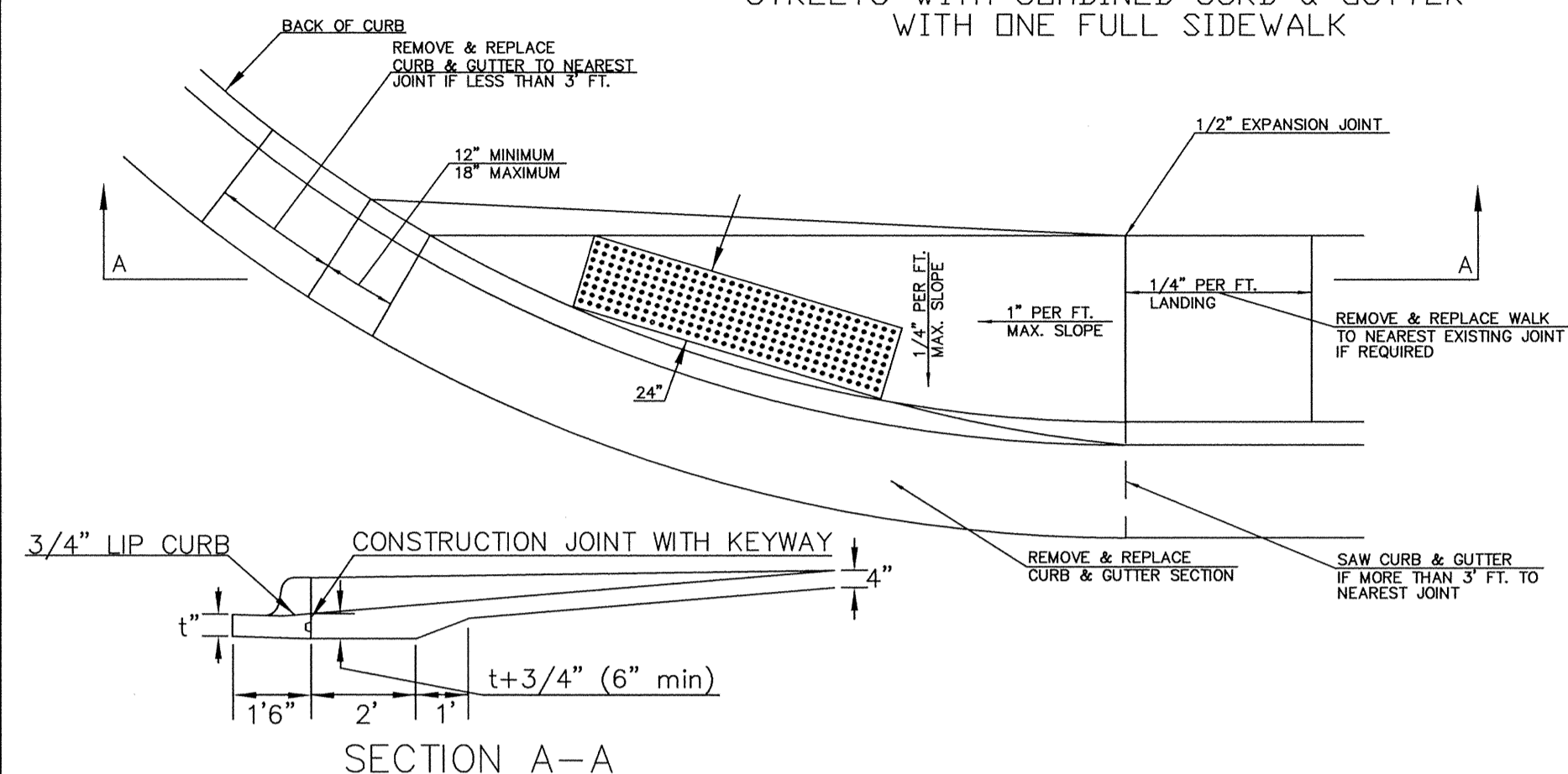
(TYPE C)
STANDARD WHEELCHAIR RAMP CONSTRUCTION DETAIL FOR STREET WITH COMBINED CURB AND GUTTER ON RADIUS WITH 6'± FROM BACK OF CURB TO PROPERTY CORNER



(TYPE C)
STANDARD WHEELCHAIR RAMP CONSTRUCTION DETAIL FOR STREET WITH MONOLITHIC CURB ON RADIUS WITH 6'± FROM BACK OF CURB TO PROPERTY CORNER



(TYPE D)
STANDARD WHEELCHAIR RAMP CONSTRUCTION DETAIL FOR STREETS WITH COMBINED CURB & GUTTER WITH ONE FULL SIDEWALK



Detectable Warning Surface Specifications

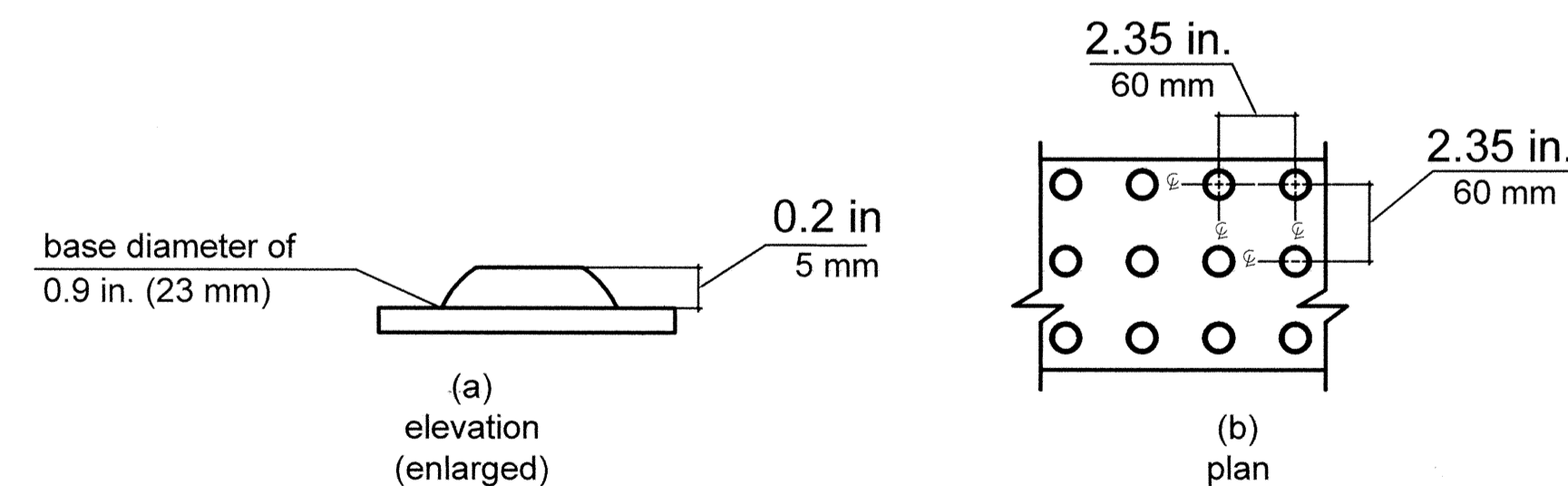
The City of Wichita specifies that all wheelchair ramps must comply with the Americans with Disabilities Act (ADA), as specified in the Code of Federal Regulations, 28 CFR Part 36, "ADA Standards for Accessible Design."

Relevant Regulations

3.1 Graphical Conventions. Graphic conventions are shown in Table 1. Dimensions that are not marked minimum or maximum are absolute, unless otherwise indicated in the text or captions.

3.2 Dimensional Tolerances. All dimensions are subject to conventional building industry tolerances for field conditions.

4.29.2 Detectable Warnings on Walking Surfaces. Detectable warnings shall consist of raised truncated domes with a diameter of nominal 0.9 in (23 mm), a height of nominal 0.2 in (5 mm) and a center-to-center spacing of nominal 2.35 in (60 mm). Truncated domes are the only detectable warnings allowed by ADA Accessibility Guidelines. Grooves, exposed aggregate, and other designs intended for use as detectable warning are too similar to pavement textures, cracks, and joints and are not equivalent.



Color and Contrast

Unless otherwise called out in the contract documents, the detectable warning surface shall be "Brick Red." The color shall be integral with the detectable warning surface and shall not be surface applied. Paints or other surface coatings shall not be used. The material used to provide contrast should contrast by at least 70%. Contrast in percent is determined by:

$$\text{Contrast} = \frac{B_1 - B_2}{B_1} * 100\%$$

where

B_1 = light reflectance value (LRV) of the lighter area and
 B_2 = light reflectance value (LRV) of the darker area.

In situations where the color value contrast between the detectable warning surface and the main walking surface is less than 70%, a 1-in. (25 mm) wide black strip shall separate the detectable warning surface from the main walking surface.

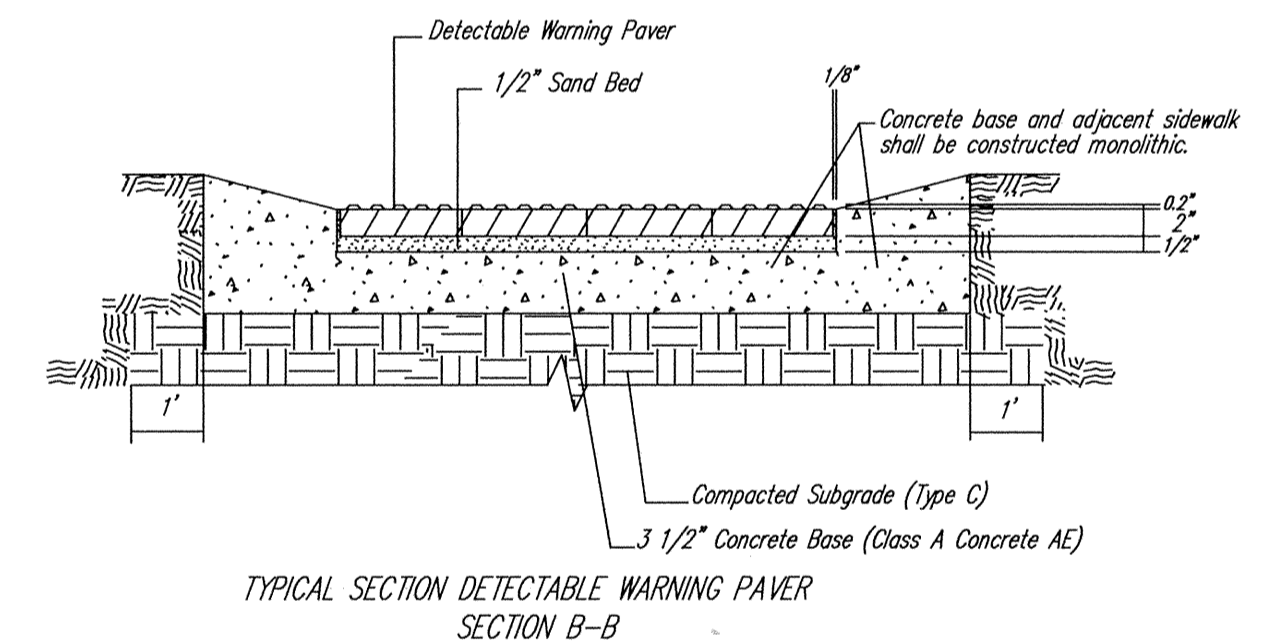
Bedding and Installation

Bedding and joint sand shall be clean, non-plastic, and free from deleterious or foreign matter. The sand shall be natural or manufactured from crushed rock. Limestone screenings or stone dust shall not be used.

Bricks shall be laid in a basket-weave pattern, maintaining straight lines and orienting the truncated domes in the direction of travel.

Detectable Warning Surface Slip Resistance Specifications

PROPERTY	STANDARD	MINIMUM THRESHOLD
Slip Resistance	ASTM C1028, F609, F1677, F1678, F1679, E903	Dry Coefficient of Friction - 0.80 min. Wet Coefficient of Friction - 0.65 min.
Wear Resistance	ASTM C501	Average wear depth on dome ≤ 0.030" after 1000 abrasion cycles.
Water Absorption	ASTM D570	Not to exceed 5%.



NOTE: CONTRACTOR SHALL ENSURE THAT ALL SIDEWALKS AND RAMPS COMPLY WITH APPLICABLE ADA & FHWA REGULATIONS WHICH ARE INCORPORATED INTO THE CONTRACT BY REFERENCE. HANOVER DETECTABLE WARNING PAVERS (OR AN APPROVED ALTERNATE) SHALL BE USED IN ALL WHEELCHAIR RAMPS. THE 11 3/4" RED 15' PAVER SHALL BE USED IN ALL APPLICATIONS.
HANOVER ARCHITECTURAL PRODUCTS
240 BENDER ROAD
HANOVER, PA 17331
1-717-637-0500
www.hanoverpavers.com



WCR WITH DETECTABLE WARNING.DWG

WHEELCHAIR RAMP LIMITED R.O.W. DETAILS

CITY ENGINEER
JAMES L. ARMOUR, P.E., L.S.

PROJECT NUMBER 211PPP (6078790)	OCA NUMBER XXXXXX	DATE MM/YY
CITY ENGINEER'S OFFICE CITY HALL - SEVENTH FLOOR 455 NORTH MAIN STREET WICHITA, KANSAS 67202-1620 (316) 268-4501 (316) 268-4114 FAX	DESIGN JLA	DRAWN MCG
SHEET C-12.5		

REV. 5-11-09