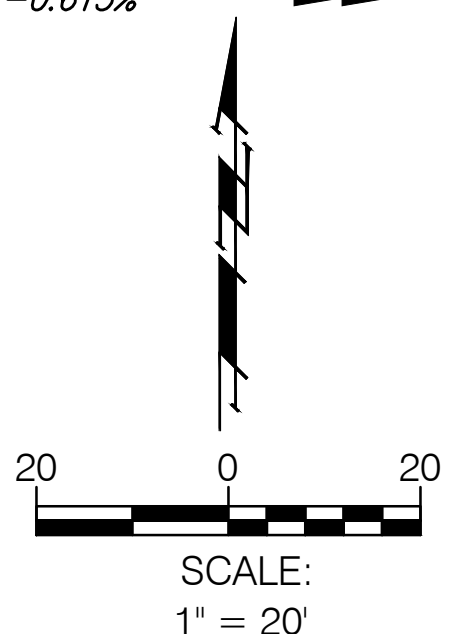
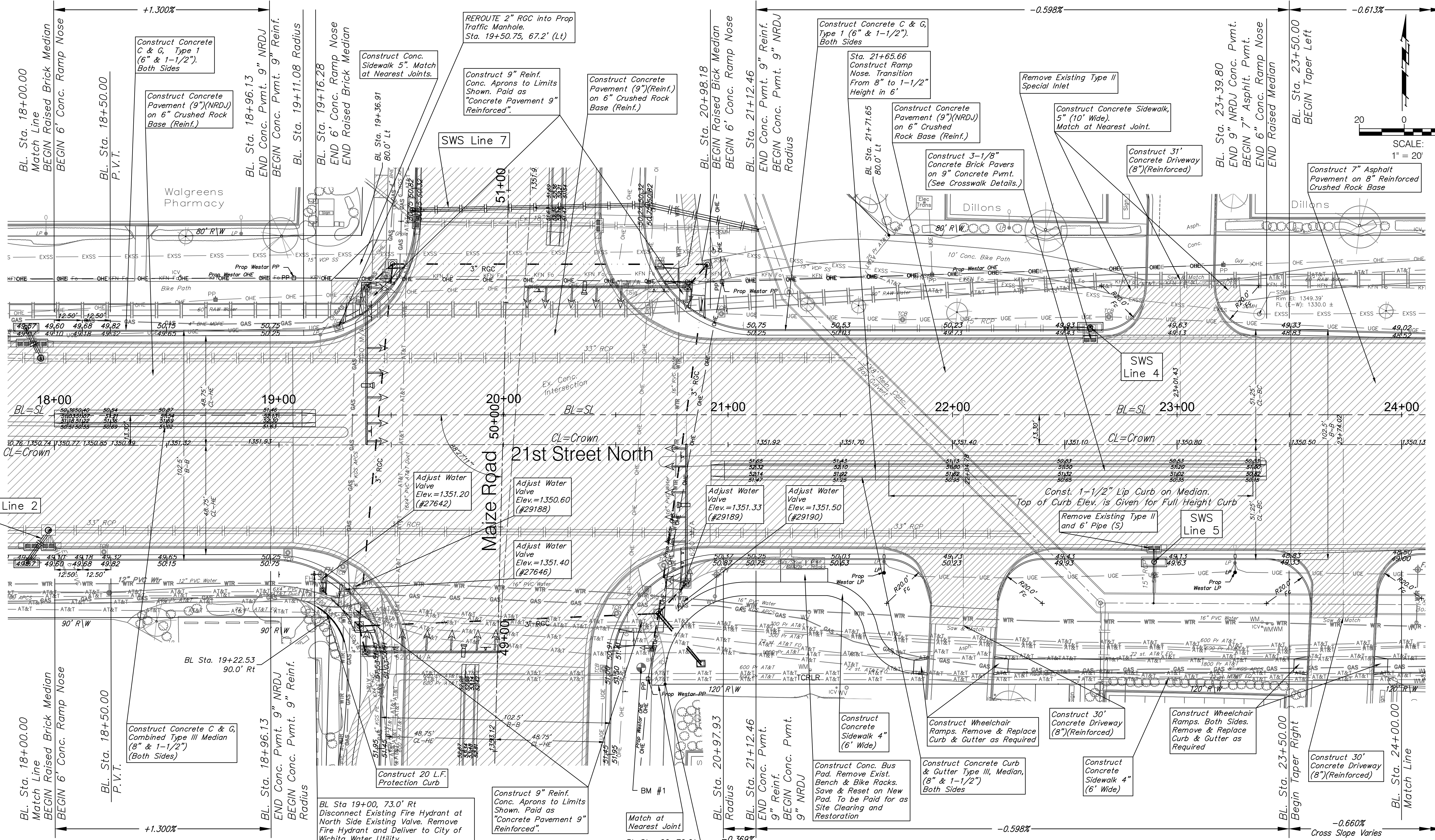


BL. Sta. 18+00.00
P.V.I. 50' V.C.
Tc=1349.50

BL. Sta. 23+50.00
P.V.I. No V.C.
Tc=1349.33



SWS Line 2

SWS Line 7

SWS Line 4

SWS Line 5

BL. Sta. 18+00.00
P.V.I. 50' V.C.
Tc=1349.50

BL. Sta. 23+50.00
P.V.I. No V.C.
Tc=1349.33

BENCHMARKS:
BM #1 (COW Brass Disk)
Ei=1352.06'

Note:
Trees/Shrubs to be removed are marked thus:

Note:
Pavement, Sidewalks, and Etc. To Be Removed Are Indicated By:

Drawing File: E:\Projects\21st & Maize_1004E492\Civil 3d\base
Project No. 1004E492
21st STREET PAVING
Sta. 18+00 to Sta. 24+00
21st STREET / MAIZE ROAD INTERSECTION

Baughman Company, P.A.
315 Ellis St. Wichita, KS 67211 P 316-262-0149 F 316-262-0149
ENGINEERING | SURVEYING | PLANNING | LANDSCAPE ARCHITECTURE

JANUARY, 2012
SHEET 16 OF 65