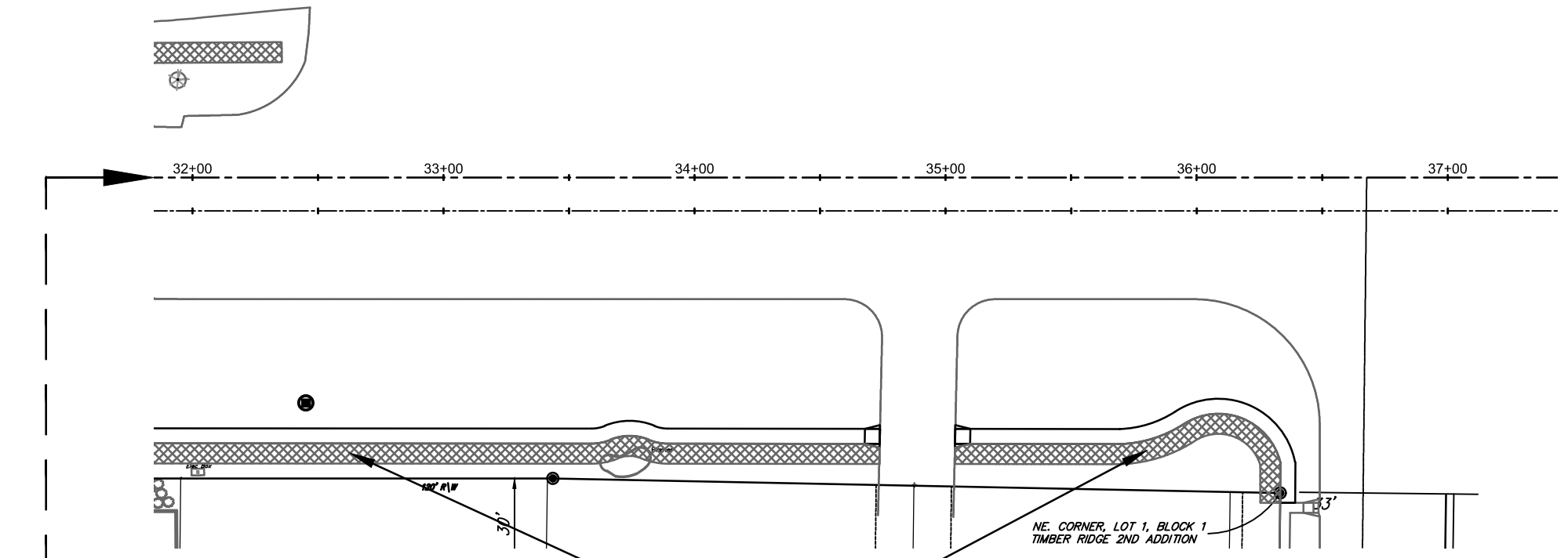
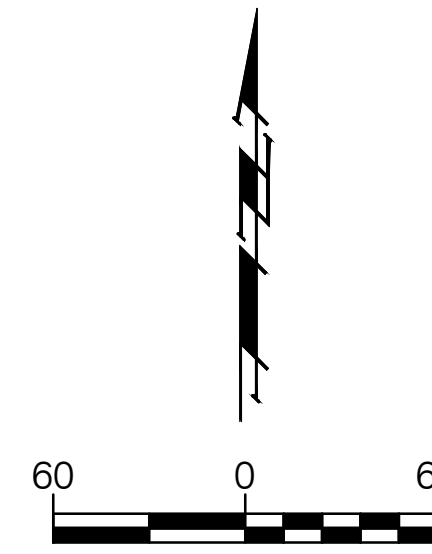
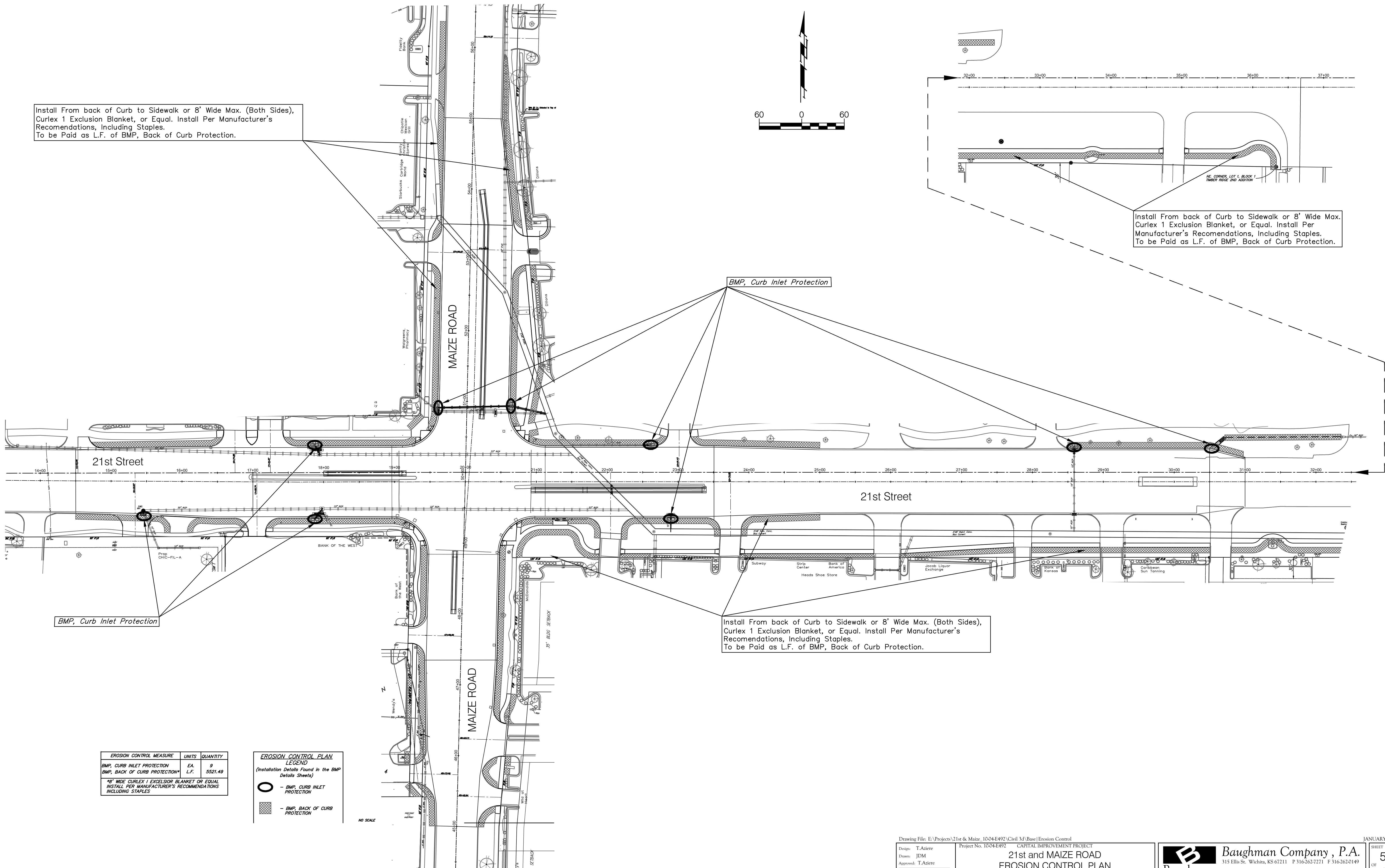


Install From back of Curb to Sidewalk or 8' Wide Max. (Both Sides), Curlex 1 Exclusion Blanket, or Equal. Install Per Manufacturer's Recommendations, Including Staples.  
To be Paid as L.F. of BMP, Back of Curb Protection.



Install From back of Curb to Sidewalk or 8' Wide Max. Curlex 1 Exclusion Blanket, or Equal. Install Per Manufacturer's Recommendations, Including Staples.  
To be Paid as L.F. of BMP, Back of Curb Protection.



BMP, Curb Inlet Protection

BMP, Curb Inlet Protection

Install From back of Curb to Sidewalk or 8' Wide Max. (Both Sides), Curlex 1 Exclusion Blanket, or Equal. Install Per Manufacturer's Recommendations, Including Staples.  
To be Paid as L.F. of BMP, Back of Curb Protection.

EROSION CONTROL MEASURE	UNITS	QUANTITY
BMP, CURB INLET PROTECTION	EA.	9
BMP, BACK OF CURB PROTECTION	L.F.	5521.49
8' WIDE CURLEX 1 EXCLUSION BLANKET OR EQUAL INSTALL PER MANUFACTURER'S RECOMMENDATIONS INCLUDING STAPLES		

**EROSION CONTROL PLAN LEGEND**  
(Installation Details Found in the BMP Details Sheets)

- - BMP, CURB INLET PROTECTION
- ▨ - BMP, BACK OF CURB PROTECTION

NO SCALE

Drawing File: E:\Projects\21st & Maize\_1004-E492\Civil 3d\Base\Erosion Control

Design: T.Azicere  
Drawn: JDM  
Approved: T.Azicere  
Scale: NOTED

Project No. 1004-E492 CAPITAL IMPROVEMENT PROJECT

**21st and MAIZE ROAD**  
**EROSION CONTROL PLAN**

21st Street and Maize Road

**Baughman Company, P.A.**  
315 Ellis St. Wichita, KS 67211 P 316-262-7271 F 316-262-0149  
ENGINEERING | SURVEYING | PLANNING | LANDSCAPE ARCHITECTURE

JANUARY, 2012

SHEET  
**57**  
OF  
**65**