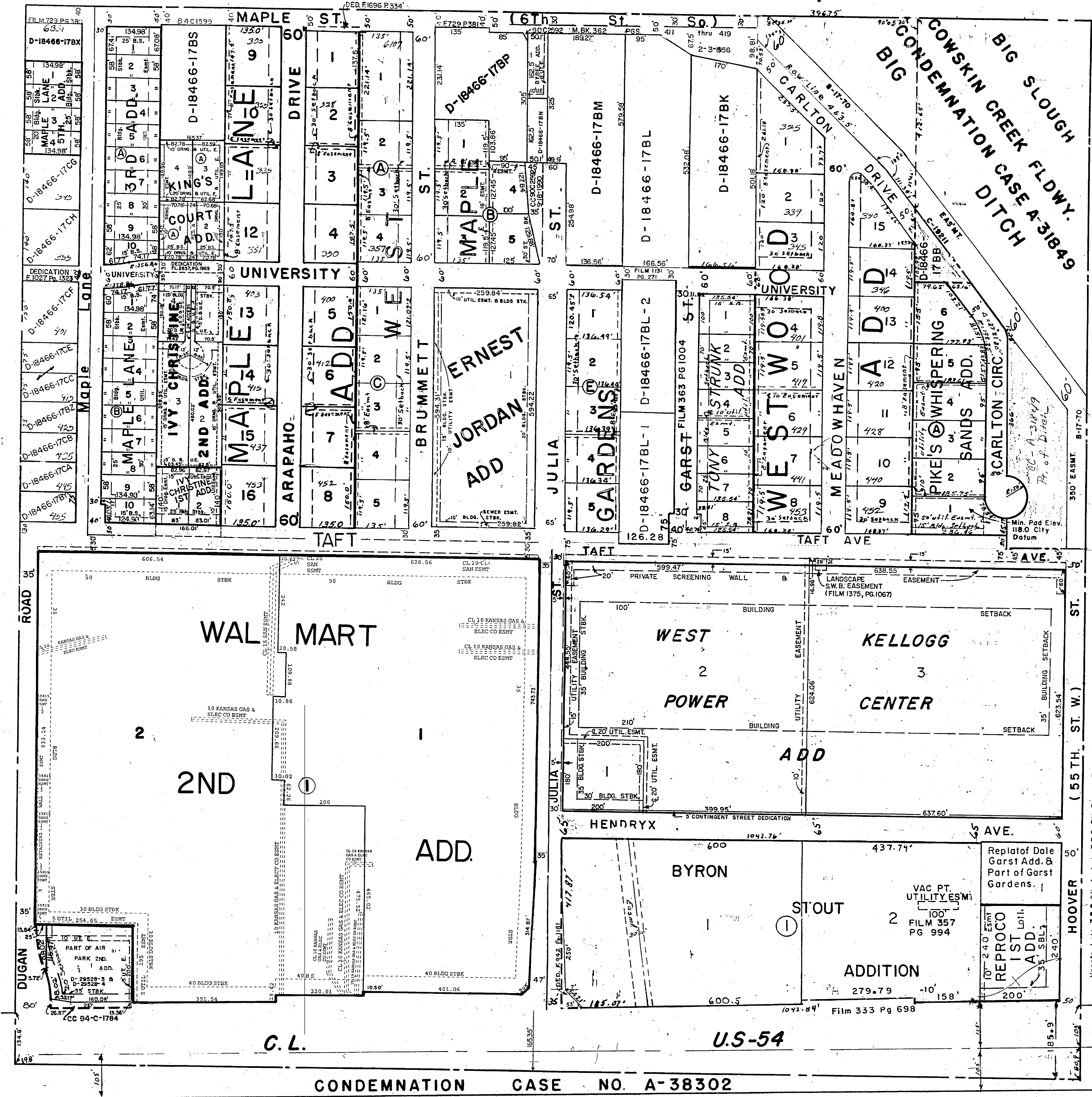


N. E. 1/4 SEC. 27, TWP. 27, R. 1W



Vacate Lots 7 & 8, Blk. A, Lots 7 & 8, Blk. B, on 7-9-96, Blk. C, Lots 1 to 10, Blk. D, plus Easements in Garst Gardens 1-4d, Lot 1, & Meadowhaven St. & Easements in Garst Gardens 1-4d, Lot 1, & Date Garst Add. & Easements. Recorded 11-1-60. Misc BX. 471 Pg 431

SCENIC LANDSCAPES-5911 W. Maple
 WATER DISTRIBUTION SYSTEM IMPROVEMENTS
 Quarter Section Map
CITY OF WICHITA, KANSAS
 JAMES L. ARMOUR, P.E. - CITY ENGINEER
 PROJECT NO. 448-90543 OCA NO. (725471)

By: Approved
 No. Date
 No. Date

POE & ASSOCIATES, INC.
 CONSULTING ENGINEERS
 5940 E. Central, Suite 200 Wichita, KS 67208-4242
 Phone 316/685-4114 FAX 316/685-4444

FINAL

Engineer: T. AUSTIN
 Designer: S. SCHMIDT
 POC Job No.: 101979
 Date: DECEMBER 2011

Sheet 10 of 10