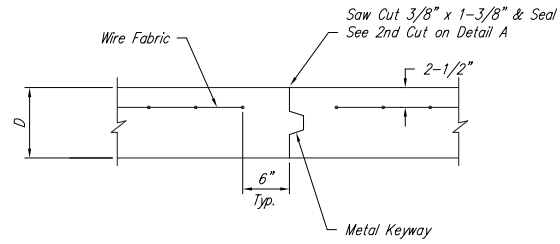
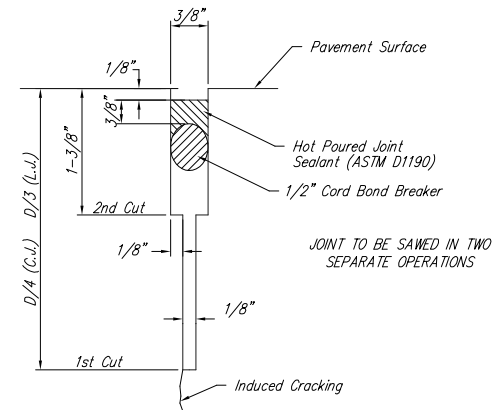


EXPANSION JOINT

NOTE: Extra Thickness to be Subsidiary to Price of Square Yards Pavement

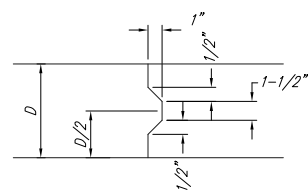


OPTIONAL CONTRACTION JOINT

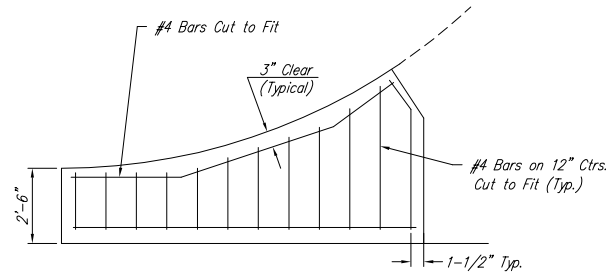


SAW JOINT DETAIL

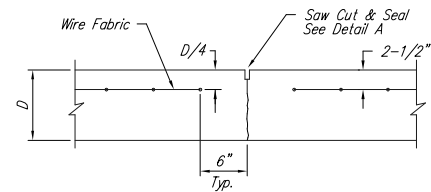
JOINT TO BE SAWED IN TWO SEPARATE OPERATIONS



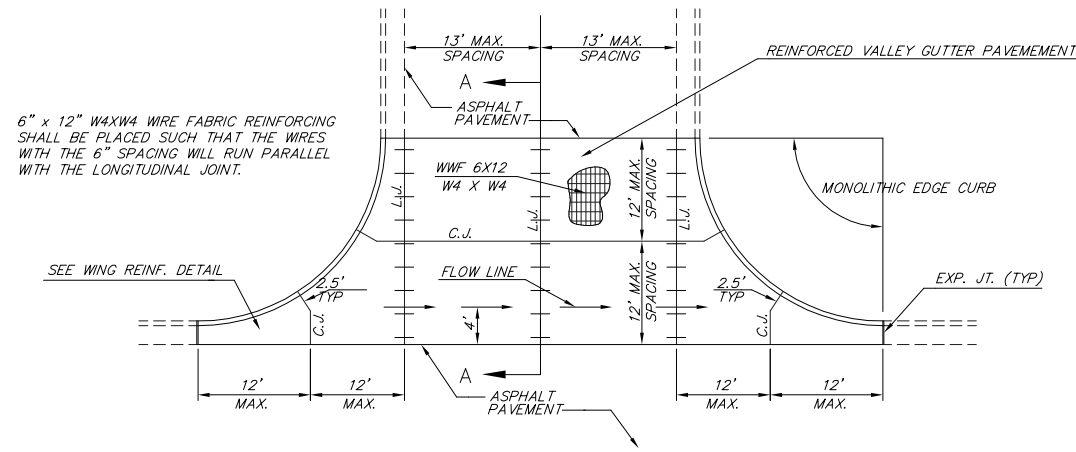
KEYWAY DETAIL



WING REINFORCING DETAIL

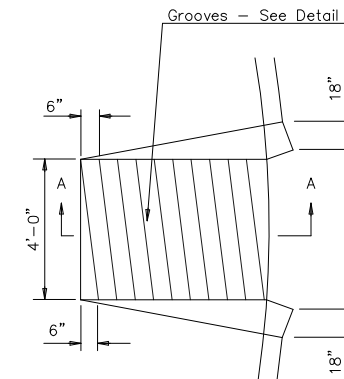


CONTRACTION JOINT DETAIL (C.J.)

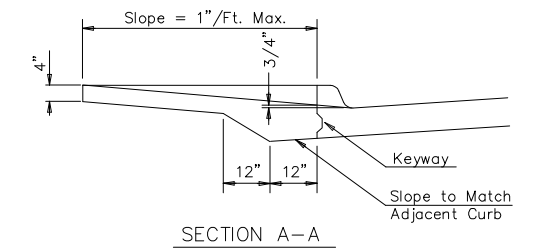


PLAN

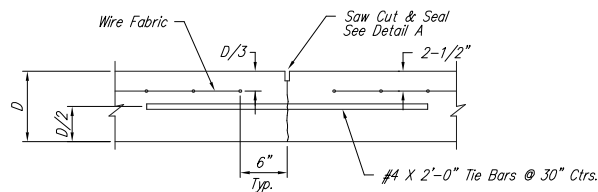
6" x 12" W4XW4 WIRE FABRIC REINFORCING SHALL BE PLACED SUCH THAT THE WIRES WITH THE 6" SPACING WILL RUN PARALLEL WITH THE LONGITUDINAL JOINT.



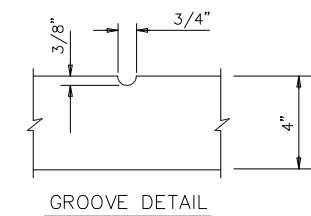
WHEELCHAIR RAMP PLAN VIEW



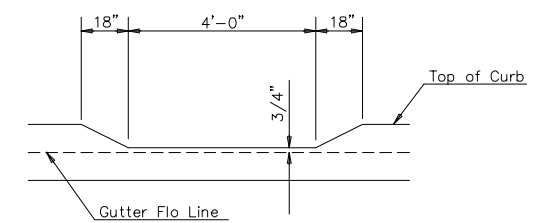
SECTION A-A



LONGITUDINAL JOINT DETAIL (L.J.)

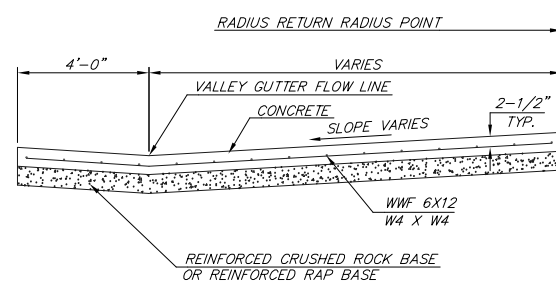


GROOVE DETAIL



DEPRESSED CURB DETAIL

WHEELCHAIR RAMP DETAIL



SECTION A-A

REINFORCED VALLEY GUTTER DETAIL

OPTIONAL LONGITUDINAL JOINT DETAIL (L.J.)

<p>THE CITY OF WICHITA</p> <p>CITY ENGINEER'S OFFICE 435 NORTH MAIN STREET WICHITA, KANSAS 67202 (316) 268-4501 (316) 268-4114 FAX</p>	VALLEY GUTTER DETAILS WHEELCHAIR RAMP DETAILS	
	JIM ARMOUR, P.E. - CITY ENGINEER	
	PROJECT NUMBER 472 83908	INDEX CODE (765845)
	DATE 8/04	SHEET 4 OF 18