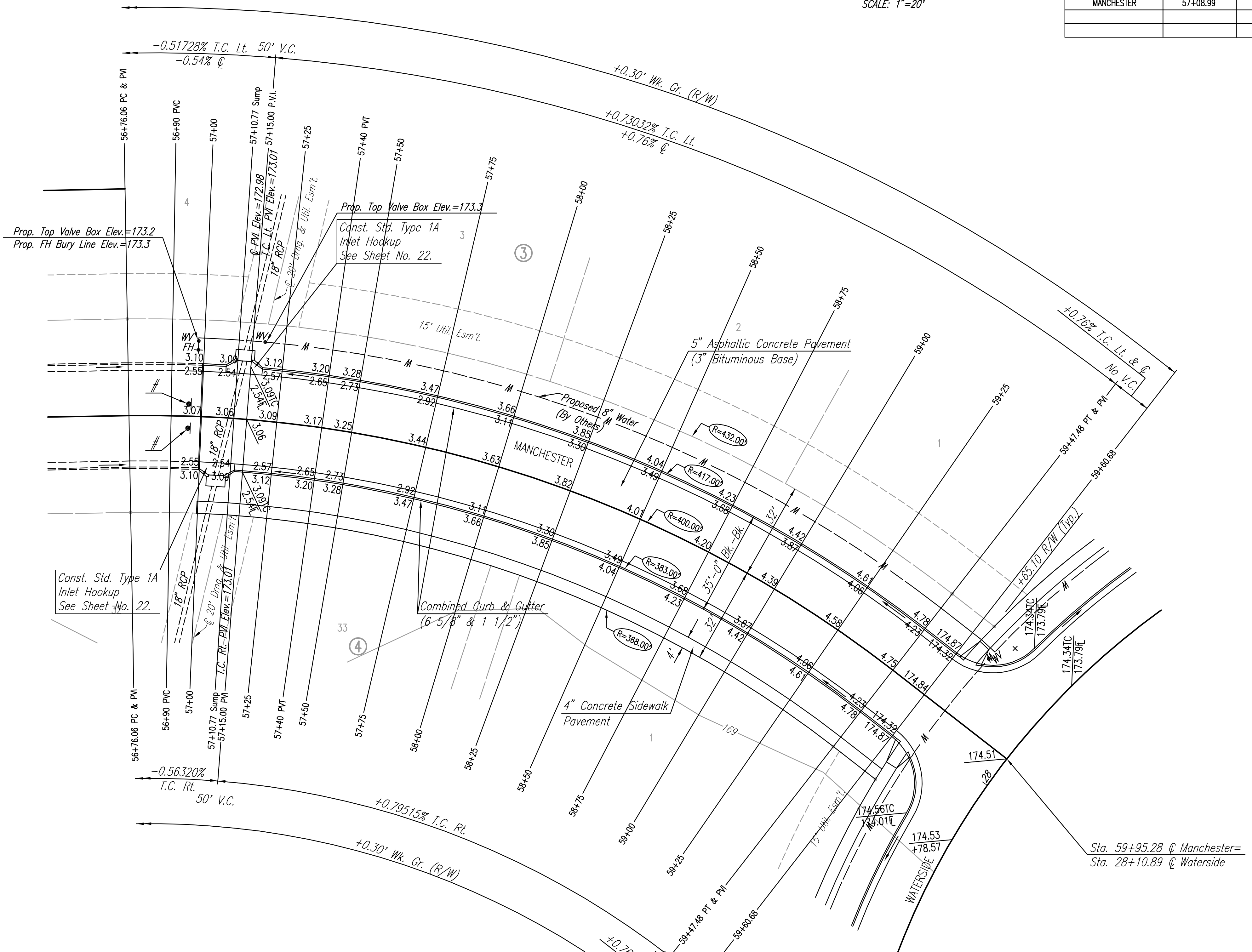


WATER VALVE BOX ELEVATIONS			
STREET	STATION	OFFSET	PROPOSED ELEVATION
MANCHESTER	56+98.20	25.0' Lt.	173.2
MANCHESTER	57+08.99	26.0' Lt.	173.3

SCALE: 1"=20'

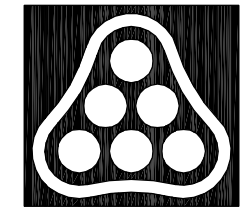


Q CURVE DATA
 $A=38^{\circ}52'42''$ $D=14^{\circ}19'26.2''$ $R=400.00'$ $l=271.42'$ $T=141.17'$ $E=24.18'$
 CURVE DATA BASED ON Q radius $\Delta/2=19^{\circ}26'21''$

Q STATION	Q ARC LENGTH	FACE CURB LENGTH		CHORD LENGTH		DEFLECTION ANGLE	Q TOTAL DEFLECTION
		LEFT CURB	RIGHT CURB	8' OFF LEFT FACE CURB	8' OFF RIGHT FACE CURB		
56+76.06						0°00'00.0"	0°00'00.0"
57+00.00	23.94'	24.96'	22.92'	24.35'	21.49'	01°42'52.5"	01°42'52.5"
57+25.00	25.00'	26.06'	23.94'	25.43'	22.44'	01°47'25.8"	03°30'18.3"
57+50.00	25.00'	26.06'	23.94'	25.43'	22.44'	01°47'25.8"	05°17'44.0"
57+75.00	25.00'	26.06'	23.94'	25.43'	22.44'	01°47'25.8"	07°05'09.8"
58+00.00	25.00'	26.06'	23.94'	25.43'	22.44'	01°47'25.8"	08°52'35.6"
58+25.00	25.00'	26.06'	23.94'	25.43'	22.44'	01°47'25.8"	10°40'01.4"
58+50.00	25.00'	26.06'	23.94'	25.43'	22.44'	01°47'25.8"	12°27'27.2"
58+75.00	25.00'	26.06'	23.94'	25.43'	22.44'	01°47'25.8"	14°14'52.9"
59+00.00	25.00'	26.06'	23.94'	25.43'	22.44'	01°47'25.8"	16°02'18.7"
59+25.00	25.00'	26.06'	23.94'	25.43'	22.44'	01°47'25.8"	17°49'44.5"
59+47.48	22.48'	23.44'	21.53'	22.87'	20.18'	01°36'36.0"	19°26'21.1"
TOTAL	271.42'	282.96'	259.89'				

Defl./ft. = 4.297184 min.

Install Type I Barricade w/E.O.R. Marker. See Sheet No.



No.	Revision	By	Date
PRAIRIE POINTE-PHASE 1 MANCHESTER STA. 57+00 TO STA. 59+95.28 JAMES L. ARMOUR, P.E.-ACTING CITY ENGINEER CITY OF WICHITA PROJECT NO. 472-84023 Professional Engineering Consultants, P.A. 303 S. TOPEKA • WICHITA, KANSAS 67202 316-262-2691 • FAX 316-262-3003			
Designed by	BDB, BLB	Job No.	35-04171-000
Drawn by	BJS	Date	May 2002

DSNR: BDR OPER: BJS SCALE: 1"=20.00
 C:\2004\04171\000\STR5-60 08-11-2004 02:39:39 pm