

PRIVATE FIRE SERVICE LINE HADLEY MIDDLE SCHOOL LOT 1, BRYANT - HADLEY ADDITION PROJECT NUMBER 1528 PPW (607853)



HANNEY & ASSOCIATES, ARCHITECTS
1728 South Hillside, Wichita, Kansas, 67211
Phone (316) 883-8985
Fax (316) 884-1441

HADLEY MIDDLE SCHOOL
 WICHITA PUBLIC SCHOOLS
 PHASE 1B- PROJECT #11-25022
 WICHITA, KANSAS
 UNIFIED SCHOOL DISTRICT #259

INDEX OF SHEETS

- (CITY SUBMITTAL INDEX)
- C2.2. TITLE SHEET
 - C2.3. WATER PLAN & PROFILE
 - C2.4. WATER PLAN & PROFILE
 - C2.5. WATER ASSEMBLY DETAILS

BENCHMARKS

BENCH MARK #1: CITY OF WICHITA DISK 42' S. OF THE CENTERLINE OF 9TH STREET NORTH AND 33' W. OF THE CENTERLINE OF ANNA STREET, ELEVATION = 1312.51 (NAVD88)

BENCH MARK #2: CHISELED SQUARE ON THE TOP OF CURB AT THE SOUTH SIDE OF THE SIDEWALK RAMP AT THE SOUTHEAST CORNER OF 10TH ST. N. AND DOUGHERTY AVE. ELEVATION = 1311.84 (NAVD88)

GENERAL NOTES

1. Contractor will be required to provide a minimum notice of 72 hours to utility companies prior to starting any excavation as follows:

Kansas One-Call	687-2470
-----------------	----------

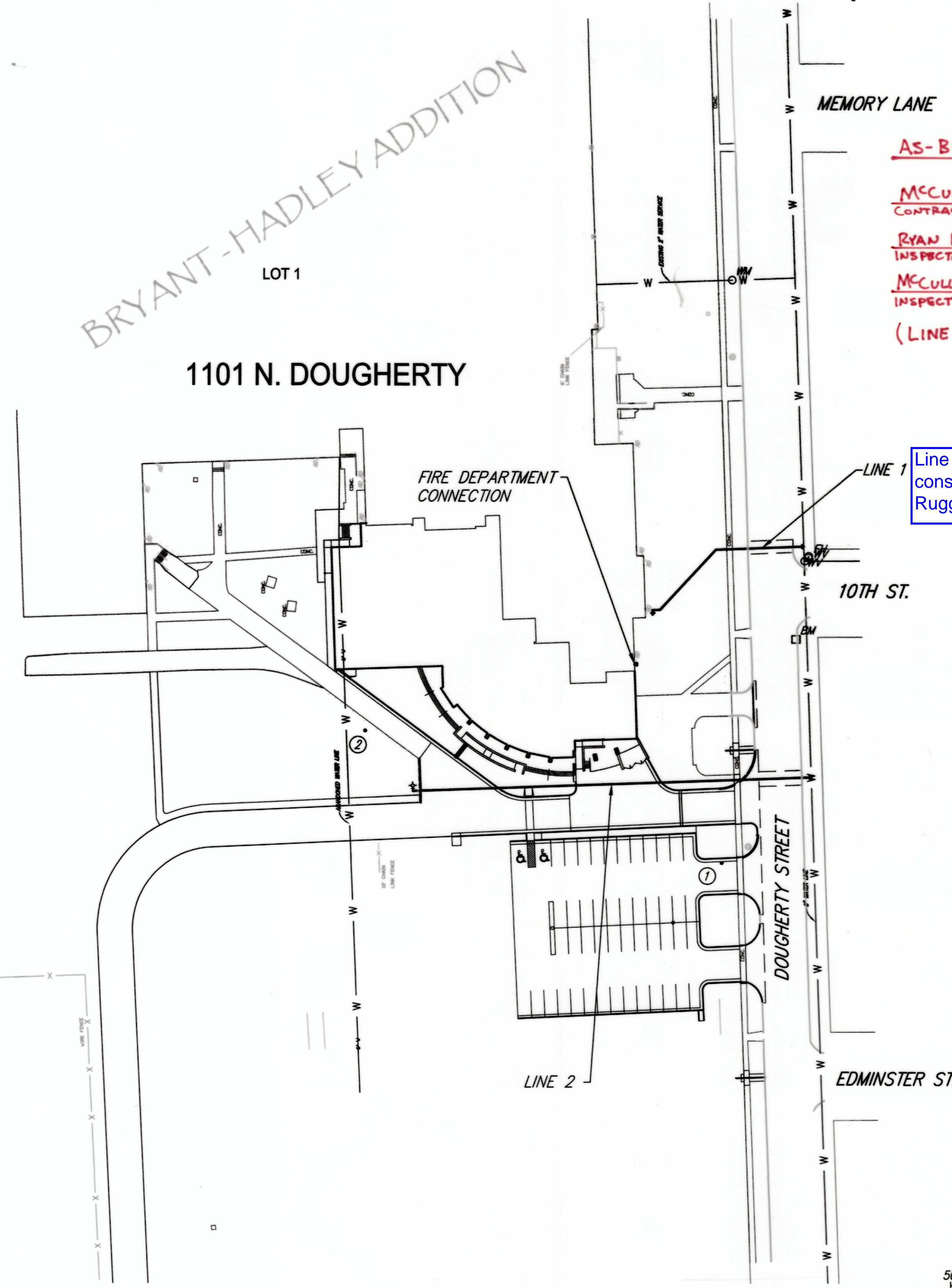
The Contractor must notify the following in case of an emergency:

Cox Communications	262-0661
Kansas Gas Service	383-8600
Westar Energy	383-8600
AT&T	1-800-286-8313
City of Wichita Water Utility	268-6000
Black Hills Energy	1-800-303-0357
2. All water mains and appurtenances shall be installed in accordance with City of Wichita, Kansas, Standard Specifications for the Construction of City Projects, and current policy on construction of public works improvements by private contract.
3. Opening and closing water valves shall be done slowly to prevent damage to the water distribution system from water hammer. All valves closed by the Contractor must be reopened as new construction permits. Project inspector must ascertain that any valve closed by the Contractor is reopened. Contractor will be permitted to operate water valves only when the project inspector assigned to the project is present.
4. The Contractor shall give all property owners and/or tenants of developed property directly abutting the construction of this project a minimum of ten (10) days advance notice prior to start of construction.
5. The Contractor shall be responsible for preserving property irons. The Contractor will be required to re-establish any property irons which are damaged or destroyed by his construction operations. Such irons shall be re-established by a licensed land surveyor in accordance with state laws.
6. The Contractor shall reimburse the Wichita Water Utilities for cost of tap and materials.
7. No work shall be done on this project until the project inspector has been notified.
8. One-lane traffic on 10th St. and Dougherty Street shall be maintained at all times.
9. At Contractor's option, pipe from Sta. 0+00 to 0+59.72 Line 1 and Sta. 0+00 to 0+55.00 may be installed by directional drilling, in lieu of street pavement removal.

NOTE: POINTS 3-5 ARE NOT SHOWN ON PLAN.

COORDINATE CONTROL TABLE

CONTROL NO.	LOCATION	DESCRIPTION	NORTHING	EASTING
①	S. SIDE OF SCHOOL ON W. SIDE OF DOUGHERTY	(5/8" MILSON)	19178.74	20018.36
②	S. SIDE OF EXISTING FIRE LANE	(5/8" MILSON)	19268.45	19775.05
③	NW CORNER OF DOUGHERTY AND 9TH	(PK NAIL)	18733.41	20043.96
④	NE CORNER OF DOUGHERTY AND 9TH	(1/2" IP)	18734.01	20103.91
⑤	SW CORNER OF LOT 1, BRYANT-HADLEY ADD.	(5/8" REBAR)	18722.58	19030.56



AS-BUILT PLANS 3-7-2012

MCCULLOUGH EXCAVATION, INC.
CONTRACTOR

RYAN MCCULLOUGH, P.E.
INSPECTOR

MCCULLOUGH EXCAVATION, INC.
INSPECTION FIRM

(LINE 2 ONLY)

Line 1 not being constructed per Ruggles & Bohm

APPROVED AS NOTED
BY CITY ENGINEER OF WICHITA
BY WICHITA FIRE DEPARTMENT
BY WICHITA WATER UTILITY

Public Works: *[Signature]* 5/16/11

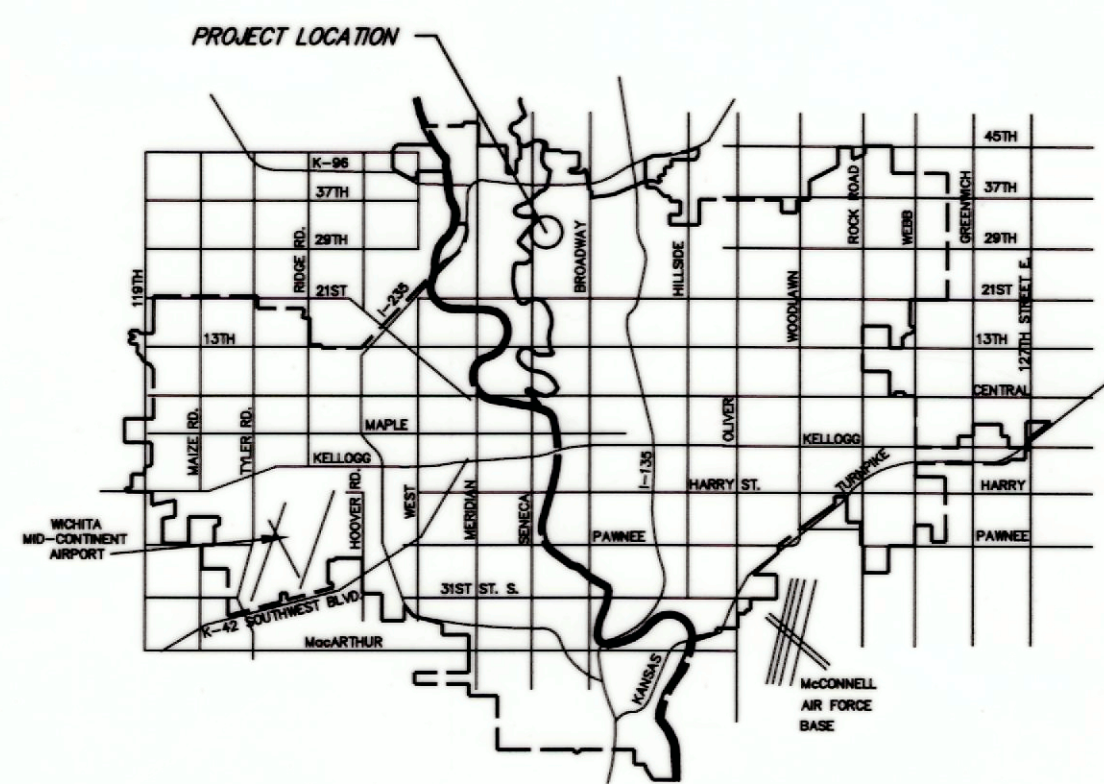
Water & Sewer: *[Signature]* 02/09/2011

Fire Prot. Line: *[Signature]* 05/10/2011

NOTE TO CONTRACTORS

Public Property: Inspection and testing for the waterline is to be provided by a Licensed Consulting Engineering Firm under contract with the Owner/Developer. Said inspection to be in accordance with the City of Wichita standard construction engineering practices and certified by a Licensed Professional Engineer. No work shall be performed in dedicated easements or public right-of-way by the Contractor without such inspection nor shall any work be commenced without written authorization by the City Engineer. All Construction and Materials shall comply with the City of Wichita Specifications and Standards (on file and available in the City Engineer's Office).

Private Property: Inspection and testing for the fire protection line is to be performed by a City of Wichita certified fire protection contractor in accordance with the fire codes as adopted by the City of Wichita. All materials and construction practices for the fire protection line shall comply with the fire codes as adopted by the City of Wichita (available from the City of Wichita Fire Department). The Contractor shall not commence work without notification to and approval of the Wichita Fire Department.



CITY OF WICHITA, KANSAS
JAMES L. ARMOUR, P.E., CITY ENGINEER

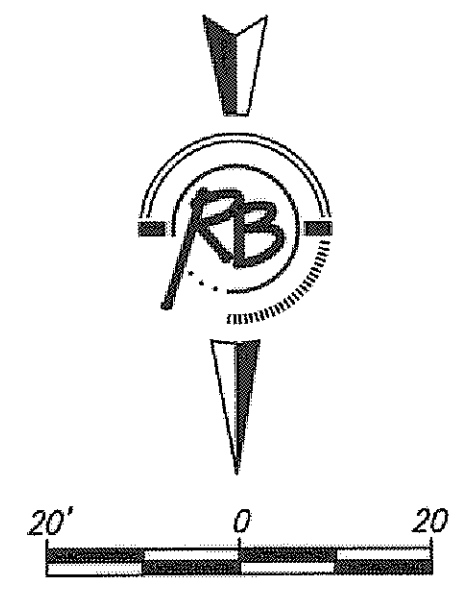
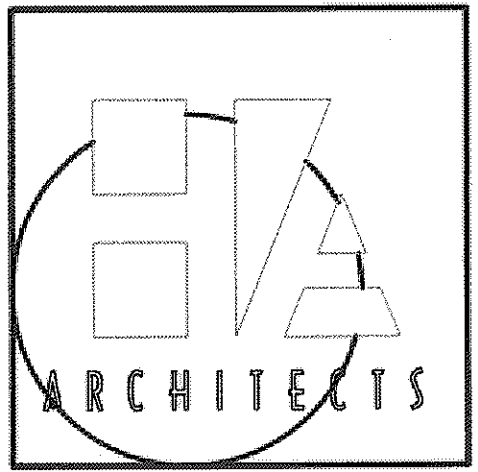
Ruggles & Bohm, P.A.
Engineering, Surveying, Land Planning
924 North Main (316) 264-8008
Wichita, Kansas 67203 (316) 264-4621 fax
www.rbkansas.com E-mail: info@rbkansas.com

DRAWINGS ISSUED			
NO.	DATE	ITEM	ISSUED
8	1/31/11	ISSUED FOR RE-BID	
7	1/17/11	REVISION REVIEW	
5	4/01/10	ISSUED FOR BID	
4	3/08/10	100% REVIEW	
3	2/12/10	50% REVIEW	
2	12/21/09	DESIGN DEVELOPMENT	
1	10/2/09	SCHEMATIC REVIEW	

COMPUTER DRAWING
WATER COVER

DATE: JANUARY 2011
DRAWN BY: CHECKED BY:
JP MRH

SHEET
C2.2
OF - SHEETS



BENCH MARK #1: CITY OF WICHITA DISK 42' S. OF THE CENTERLINE OF 9TH STREET NORTH AND 33' W. OF THE CENTERLINE OF ANNA STREET, ELEVATION = 1312.51 (NAVD88)

BENCH MARK #2: CHISELED SQUARE ON THE TOP OF CURB AT THE SOUTH SIDE OF THE SIDEWALK RAMP AT THE SOUTHEAST CORNER OF 10TH ST. N. AND DOUGHERTY AVE. ELEVATION = 1311.84 (NAVD88)

HANNEY & ASSOCIATES, ARCHITECTS
1728 South Hillside, Wichita, Kansas, 67211
Phone (316) 853-8965
Fax (316) 684-1441

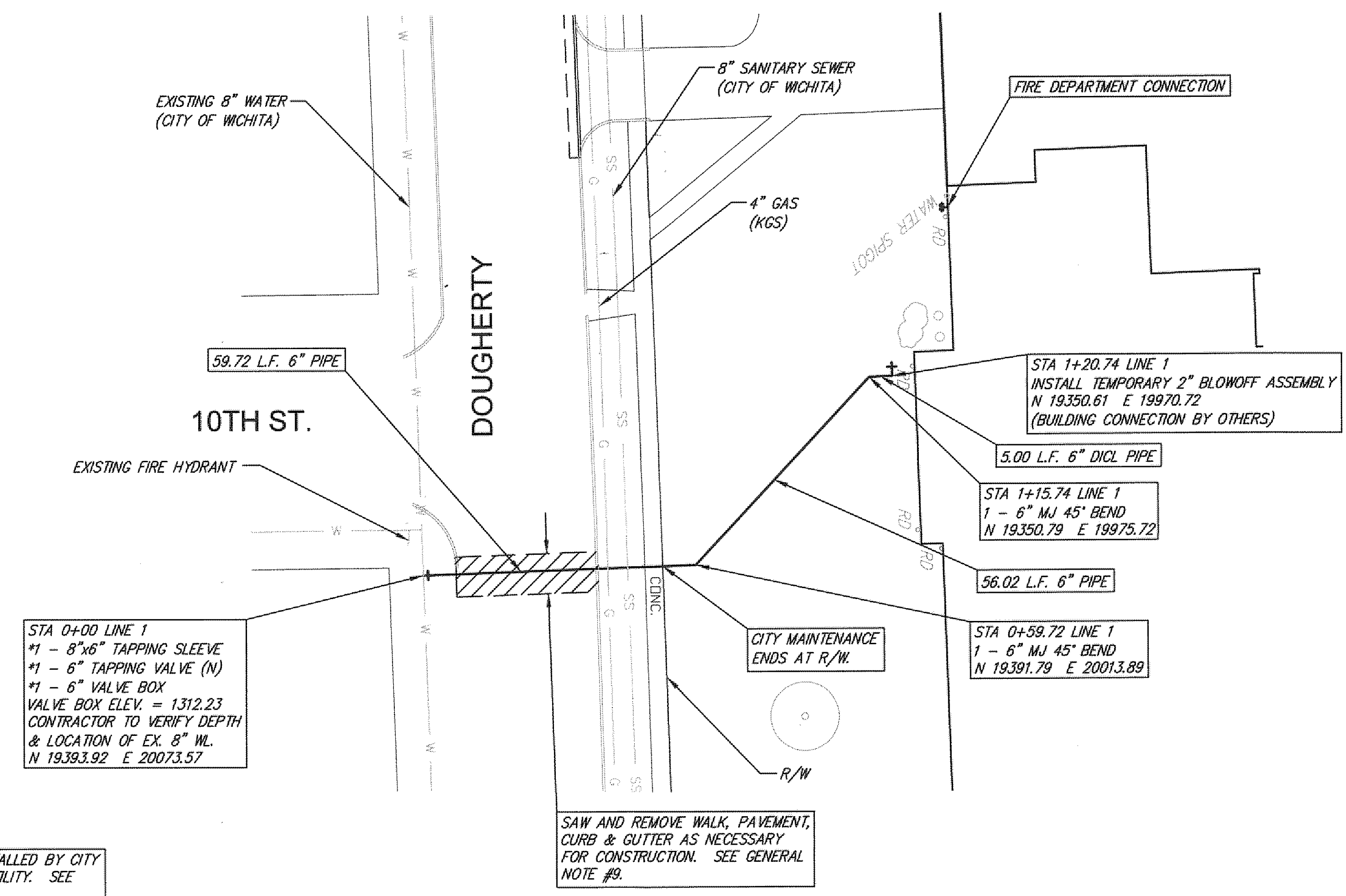
HADLEY MIDDLE SCHOOL
WICHITA PUBLIC SCHOOLS
PHASE 1B- PROJECT #11-25022
WICHITA, KANSAS
UNIFIED SCHOOL DISTRICT #259



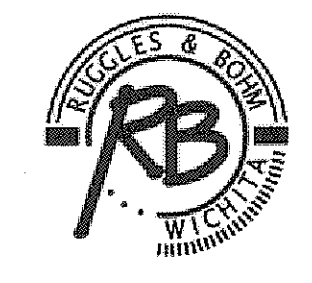
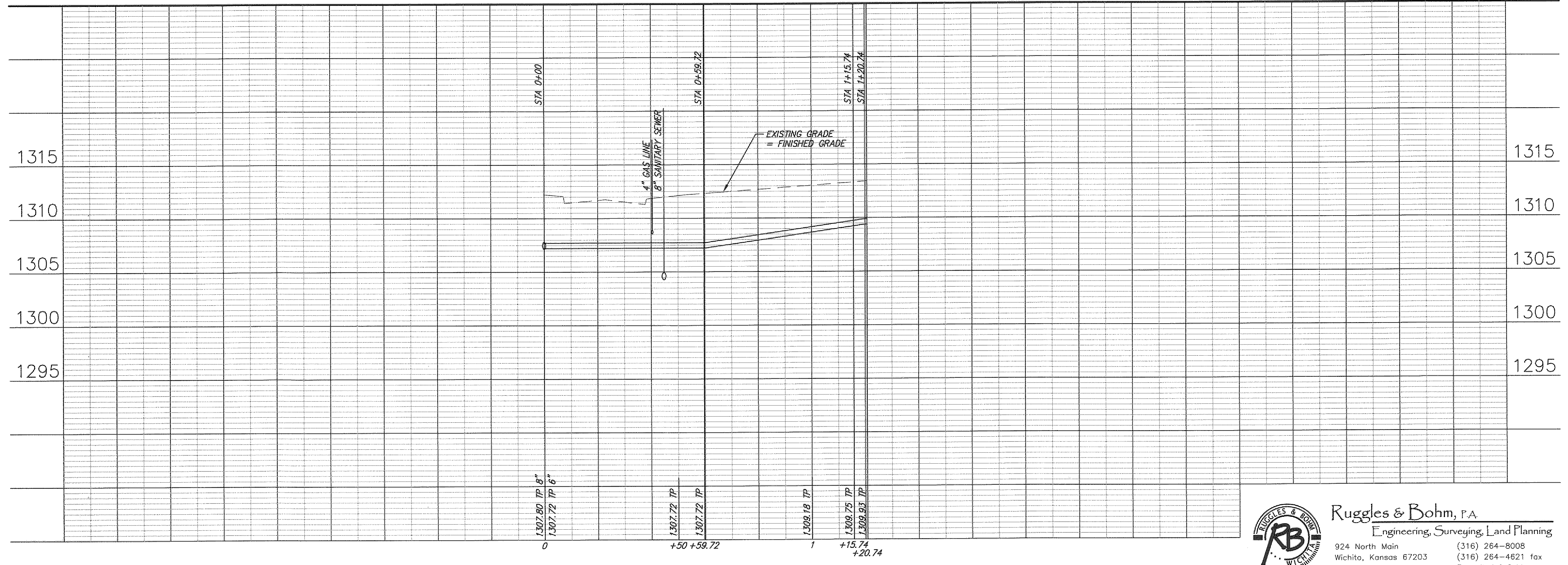
DRAWINGS ISSUED	
NO.	DATE
8	1/31/11
7	1/17/11
5	4/01/10
4	3/08/10
3	2/12/10
2	12/21/09
1	10/2/09

COMPUTER DRAWING
WATER P&P
DATE: JANUARY 2011
DRAWN BY: CHECKED BY:
JP MRH

SHEET
C2.3
OF - SHEETS



CONTROL NO.	LOCATION	DESCRIPTION	NORTHING	EASTING
①	S. SIDE OF SCHOOL ON W. SIDE OF DOUGHERTY	(5/8" WILSON)	19178.74	20018.36
②	S. SIDE OF EXISTING FIRE LANE	(5/8" WILSON)	19268.45	19775.05
③	NW CORNER OF DOUGHERTY AND 9TH	(PK NAIL)	18733.41	20043.96
④	NE CORNER OF DOUGHERTY AND 9TH	(1/2" IP)	18734.01	20103.91
⑤	SW CORNER OF LOT 1, BRYANT-HADLEY ADD.	(5/8" REBAR)	18722.58	19030.56



Ruggles & Bohm, P.A.
Engineering, Surveying, Land Planning
924 North Main (316) 264-8008
Wichita, Kansas 67203 (316) 264-4621 fax
www.rbkansas.com E-mail: info@rbkansas.com

3590E



BENCH MARK #1: CITY OF WICHITA DISK 42'
S. OF THE CENTERLINE OF 9TH STREET
NORTH AND 33' W. OF THE CENTERLINE OF
ANNA STREET,
ELEVATION = 1312.51 (NAVD88)

BENCH MARK #2: CHISELED SQUARE ON THE
TOP OF CURB AT THE SOUTH SIDE OF THE
SIDEWALK RAMP AT THE SOUTHEAST CORNER
OF 10TH ST. N. AND DOUGHERTY AVE.
ELEVATION = 1311.84 (NAVD88)

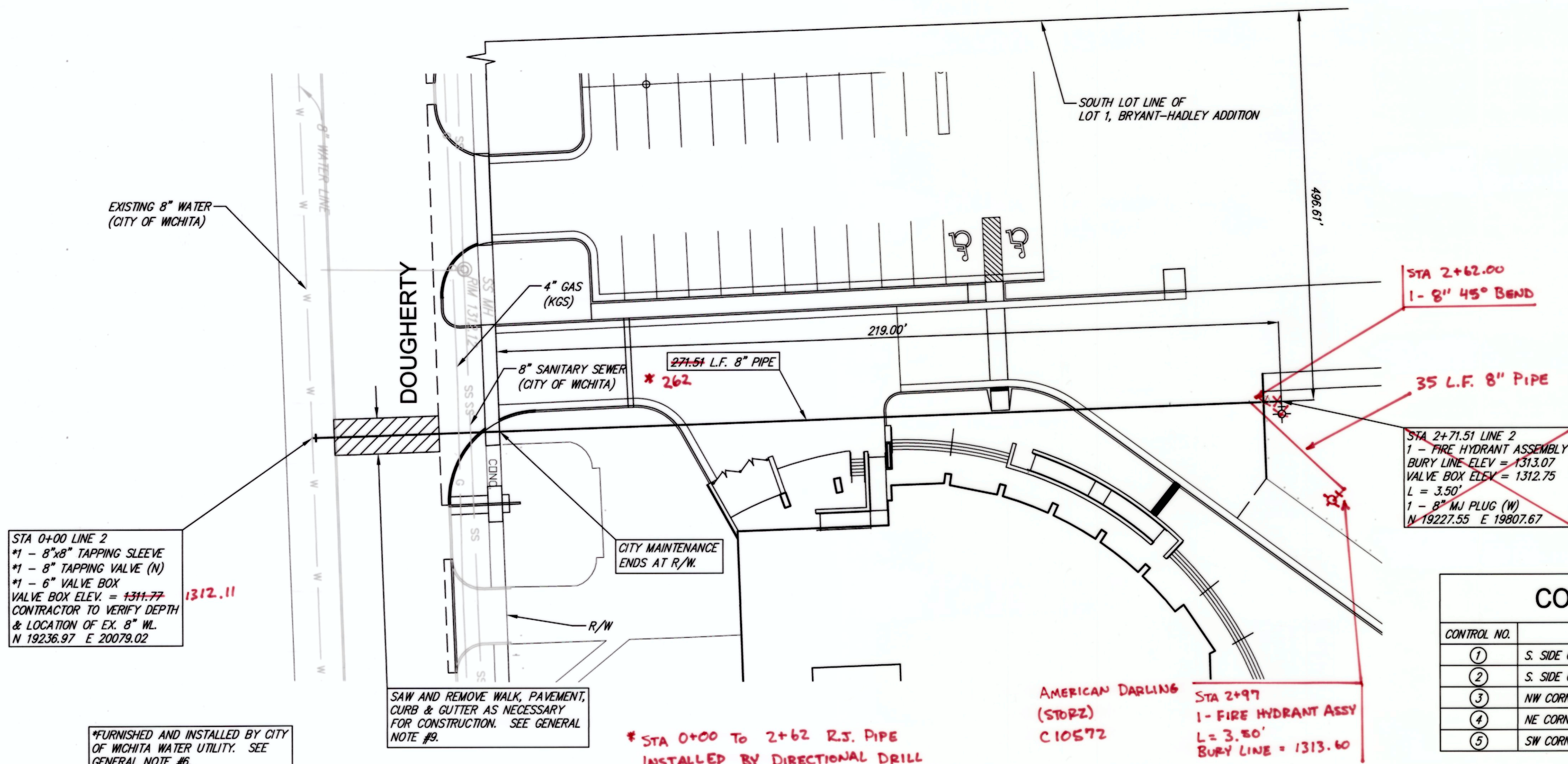
HANNEY & ASSOCIATES, ARCHITECTS
1726 South Hillside, Wichita, Kansas, 67211
Phone (316) 835-8865
Fax (316) 684-1441

HADLEY MIDDLE SCHOOL
WICHITA PUBLIC SCHOOLS
PHASE 1B- PROJECT #11-25022
WICHITA, KANSAS
UNIFIED SCHOOL DISTRICT #259



COORDINATE CONTROL TABLE

CONTROL NO.	LOCATION	DESCRIPTION	NORTHING	EASTING
①	S. SIDE OF SCHOOL ON W. SIDE OF DOUGHERTY	(5/8" MILSON)	19178.74	20018.36
②	S. SIDE OF EXISTING FIRE LANE	(5/8" MILSON)	19268.45	19775.05
③	NW CORNER OF DOUGHERTY AND 9TH	(PK NAIL)	18733.41	20043.96
④	NE CORNER OF DOUGHERTY AND 9TH	(1/2" IP)	18734.01	20103.91
⑤	SW CORNER OF LOT 1, BRYANT-HADLEY ADD.	(5/8" REBAR)	18722.58	19030.56



STA 0+00 LINE 2
#1 - 8"x8" TAPPING SLEEVE
#1 - 8" TAPPING VALVE (N)
#1 - 6" VALVE BOX
VALVE BOX ELEV. = 1311.77
CONTRACTOR TO VERIFY DEPTH
& LOCATION OF EX. 8" WL.
N 19236.97 E 20079.02

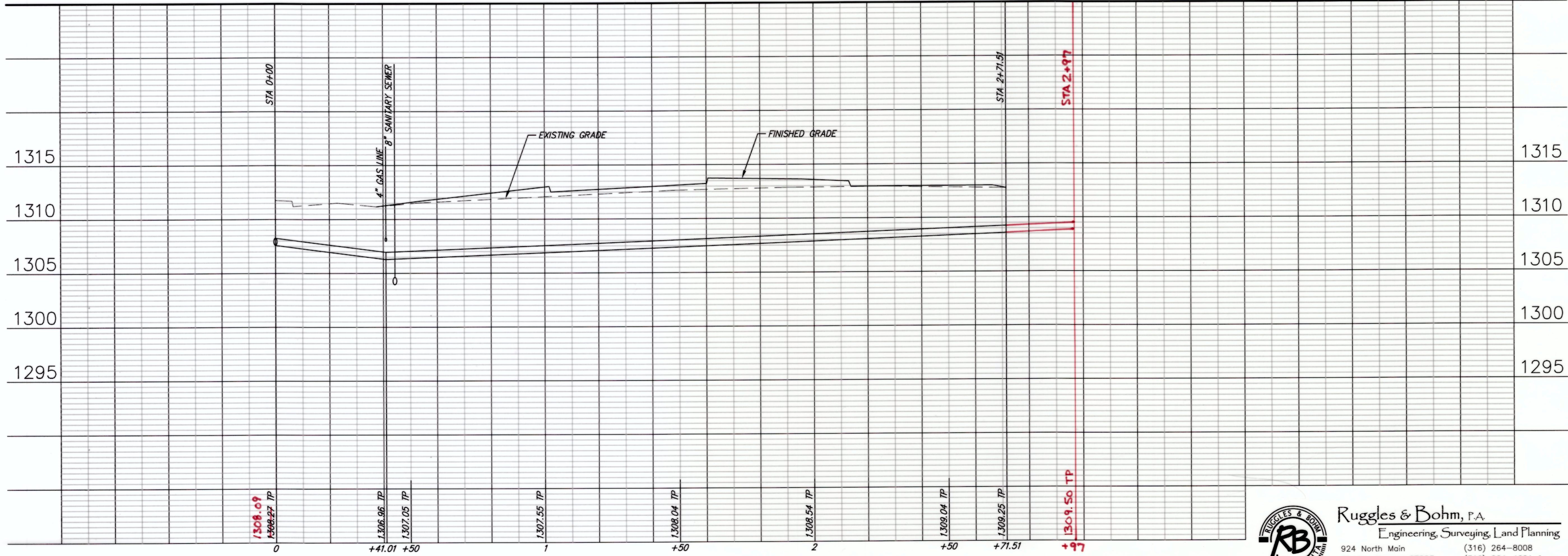
*FURNISHED AND INSTALLED BY CITY
OF WICHITA WATER UTILITY. SEE
GENERAL NOTE #6.

SAW AND REMOVE WALK, PAVEMENT,
CURB & GUTTER AS NECESSARY
FOR CONSTRUCTION. SEE GENERAL
NOTE #9.

* STA 0+00 TO 2+62 R.J. PIPE
INSTALLED BY DIRECTIONAL DRILL

AMERICAN DARLING
(STBRZ)
C10572

STA 2+97
1- FIRE HYDRANT ASSY
L = 3.50'
BURY LINE = 1313.60



DRAWINGS ISSUED

NO.	DATE	ITEM	ISSUED
8	1/31/11	ISSUED FOR RE-BID	
7	1/17/11	REVISION REVIEW	
5	4/01/10	ISSUED FOR BID	
4	3/08/10	100% REVIEW	
3	2/12/10	50% REVIEW	
2	12/21/09	DESIGN DEVELOPMENT	
1	10/2/09	SCHEMATIC REVIEW	

COMPUTER DRAWING
WATER P&P

DATE: JANUARY 2011
DRAWN BY: CHECKED BY:
JP MRH

SHEET

C2.4

OF - SHEETS



Ruggles & Bohm, P.A.
Engineering, Surveying, Land Planning
924 North Main (316) 264-8008
Wichita, Kansas 67203 (316) 264-4621 fax
www.rbkansas.com E-mail: info@rbkansas.com

3590E

