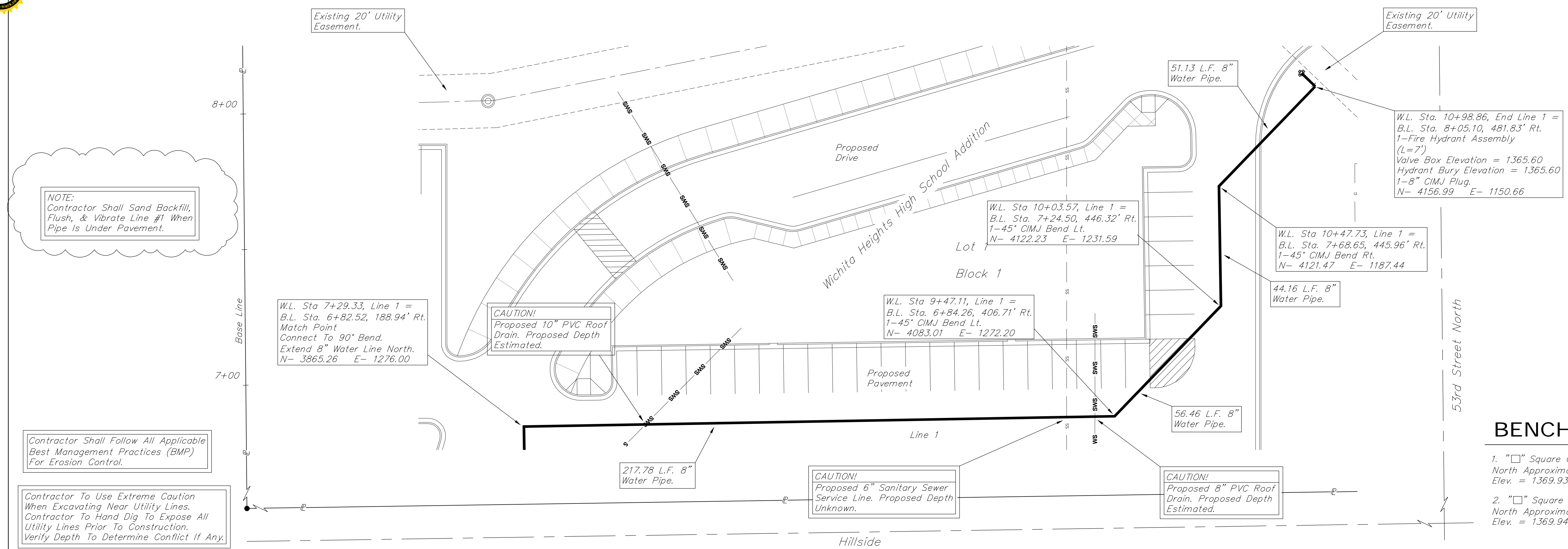
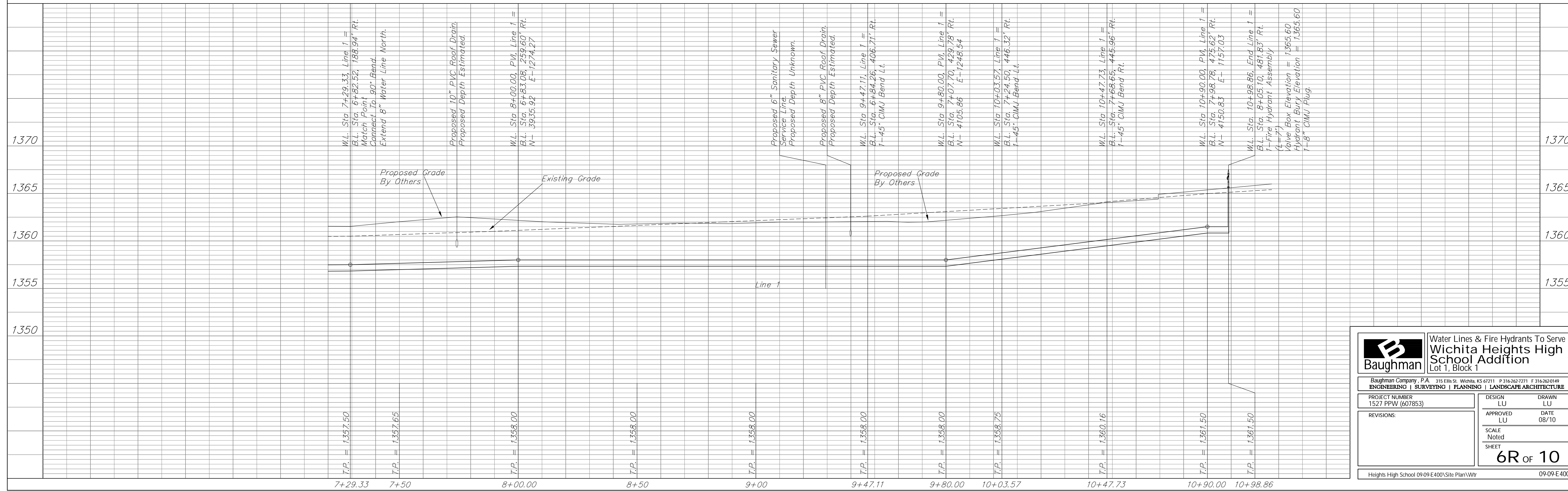


SCALE:
 1" = 20' HORIZONTAL
 1" = 5' VERTICAL



BENCHMARKS

1. "□" Square Cut On Headwall South Side Of 53rd Street North Approximately 736.3' West Of Center Line Of Hillside. Elev. = 1369.93 NAVD 88
2. "□" Square Cut On Headwall South Side Of 53rd Street North Approximately 1522.1' West Of Center Line Of Hillside. Elev. = 1369.94 NAVD 88



		Water Lines & Fire Hydrants To Serve Wichita Heights High School Addition Lot 1, Block 1	
Baughman Company, P.A. 315 Ellis St. Wichita, KS 67211 P 316-262-7271 F 316-262-0149 ENGINEERING SURVEYING PLANNING LANDSCAPE ARCHITECTURE			
PROJECT NUMBER 1527 PPW (607853)	DESIGN LU	DRAWN LU	
REVISIONS:	APPROVED LU	DATE 08/10	
	SCALE Noted	SHEET	
			6R OF 10
Heights High School 09-09-E400\Site Plan\Wtr			09-09-E400