

Point 2100
Sta. 10+00
1" Iron Pipe in Thimble
SW COR., SEC 1,
TWP. 27-S, R-2-W

Point 12060
Sta. 36+30.58
1/2" Rebar
SE COR. NE 1/4 COR., SEC 2,
TWP. 27-S, R-2-W

Point 12050
Sta. 62+74.17
1/2" Rebar
SW COR., SW 1/4 SEC 36,
TWP. 26-S, R-2-W

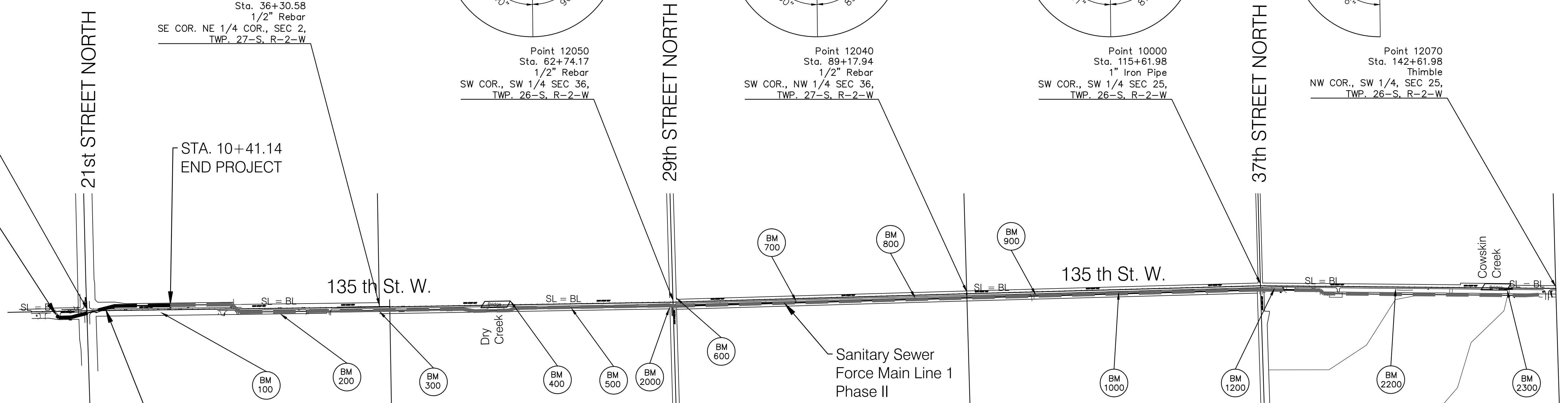
Point 12040
Sta. 89+17.94
1/2" Rebar
SW COR., NW 1/4 SEC 36,
TWP. 27-S, R-2-W

Point 10000
Sta. 115+61.98
1" Iron Pipe
SW COR., SW 1/4 SEC 25,
TWP. 26-S, R-2-W

Point 12070
Sta. 142+61.98
Thimble
NW COR., SW 1/4, SEC 25,
TWP. 26-S, R-2-W

STA. 0+00.00
BEGIN PROJECT

STA. 10+41.14
END PROJECT



KEY SHEET PHASE I

Point 2100
SW Corner, SW 1/4, Sec 1, TWP 27S, R2 W
1" Iron Pipe in Thimble, Center Travelway 21st Street N.
& 135th St. W.
N. 1,698,195.35
E. 1,601,838.93

Point 100
Southwest Corner of South Headwall at Driveway to
2300 N. 135th St. W. on East Side of Road.
N. 1,698,861.81
E. 1,601,854.93

Point 12060
SE Corner, NE 1/4, Sec. 2, TWP 27S, R2W
1/2" Rebar ± Center of Travelway 135th St. W.
N. 1,700,825.72
E. 1,601,805.43

Point 12050
SW Corner, SW 1/4, Sec. 36, TWP 26S, R2W
3/4" Iron Pipe. ± 4' North to Center Travelway
29th St. N. & ± Center Travelway 135th St. W.
N. 1,703,468.94
E. 1,601,761.26

Point 12040
SW Corner, NW 1/4, Sec. 36, TWP 26S, R2W
1/2" Rebar
± 2' E. to Center of Travelway 135th St. W.
N. 1,706,111.90
E. 1,601,685.81

Point 10000
SW Corner, SW 1/4, Sec. 25, TWP 26S, R2W
1" Iron Pipe ± Center Intersection of 135th St. W. &
37th St. N.
N. 1,708,754.69
E. 1,601,613.72

Point 12070
NW Corner, SW 1/4, Sec. 25, TWP 26S, R2W
Thimble at Center of 135th St. W.
N. 1,711,411.50
E. 1,601,635.18

BM 100
Southwest Corner of Southwest Headwall at
Driveway to 2300 N. 135th St. W. on East
Side of Road.
Elev. 1354.91 NAVD 88

BM 200
RR Spike in North Face Power Pole at
2412 N. 135th St. on East Side of Road
Near AT&T Pedestal # 2412.
Elev. 1349.31 NAVD 88

BM 300
Top of #4 Bar at the West 1/4 of Sec. 1,
TWP 27S, R1W Center of 135th St. W. 1/2 Mile
North of Center 12st St. N.
Elev. 1348.85 NAVD 88

BM 400
City of Wichita BM Disc at the NW Corner of
Bridge on 135th St. W. Approximately 2000 ft.
South of 29th St. N.
Elev. 1352.27 NAVD 88

BM 500
RR Spike in West Face of Power Pole at the
East R/W of 135th St. W. Approximately
800 ft. South of 29th St. N.
Elev. 1352.86 NAVD 88

BM 600
RR Spike in East Face of Guy Pole at the
NW Corner of the Intersection of 135th St. W.
& 29th St. N.
Elev. 1354.97 NAVD 88

BM 700
RR Spike in West Face of 5th Power Pole
North of 29th St. N. at the East R/W of
135th St. W. Approximately 100 ft. South of
3155 N. 135th St. W.
Elev. 1360.86 NAVD 88

BM 800
RR Spike in West Face of Power Pole at East
Side 135th St. W. at 3201 N 135th St. W
Elev. 1364.47 NAVD 88

BM 900
RR Spike in West Face of Power Pole at East
Side 135th St. W. and North of Long Gravel
Driveway to East at 3500 N. 135th St. W.
Elev. 1363.98 NAVD 88

BM 1000
RR Spike in West Face of 5th Power Pole
South of 37th St. N. at the East R/W of
135th St. W.
Elev. 1364.35 NAVD 88

BM 1200
USGS Standard Tablet B-36-1936.
125 ft. North and 27 ft. East of the
Centerlines of Intersection of 135th St. W.
and 37th St. N.
Elev. 1370.75 NAVD 88

BM 2000
City of Wichita BM Disc at the Southeast
Corner of 135th St. W. and 29th St. N.
Elev. 1350.82 NAVD 88

BM 2200
RR Spike in West Face of Power Pole 1/4 Mile
North of 37th St. N. on the East Side of
135th St. W., 12 ft North of AT&T Pedestal
F-3902.
Elev. 1359.87 NAVD 88

BM 2300
Chisled "a" on Top of Concrete Retaining
Wall at the Northeast Corner of Bridge over
Cowskin Creek on 135th St. W., 0.4 Miles
North of 37th St. N.
Elev. 1357.10 NAVD 88

Drawing File: E:\Projects\135th St. W. Force Main\Bases
Drawn: KEK
Checked: Staff
Approved: JFB
Scale: 1" = 500'

135th St. W. Sanitary Sewer Force Main Ph - I
KEY SHEET

B Baughman Company, P.A.
315 Ellis St. Wichita, KS 67211 P 316.262.7271 F 316.262.0149
ENGINEERING | SURVEYING | PLANNING | LANDSCAPE ARCHITECTURE

February, 2012
SHEET
112
OF
231