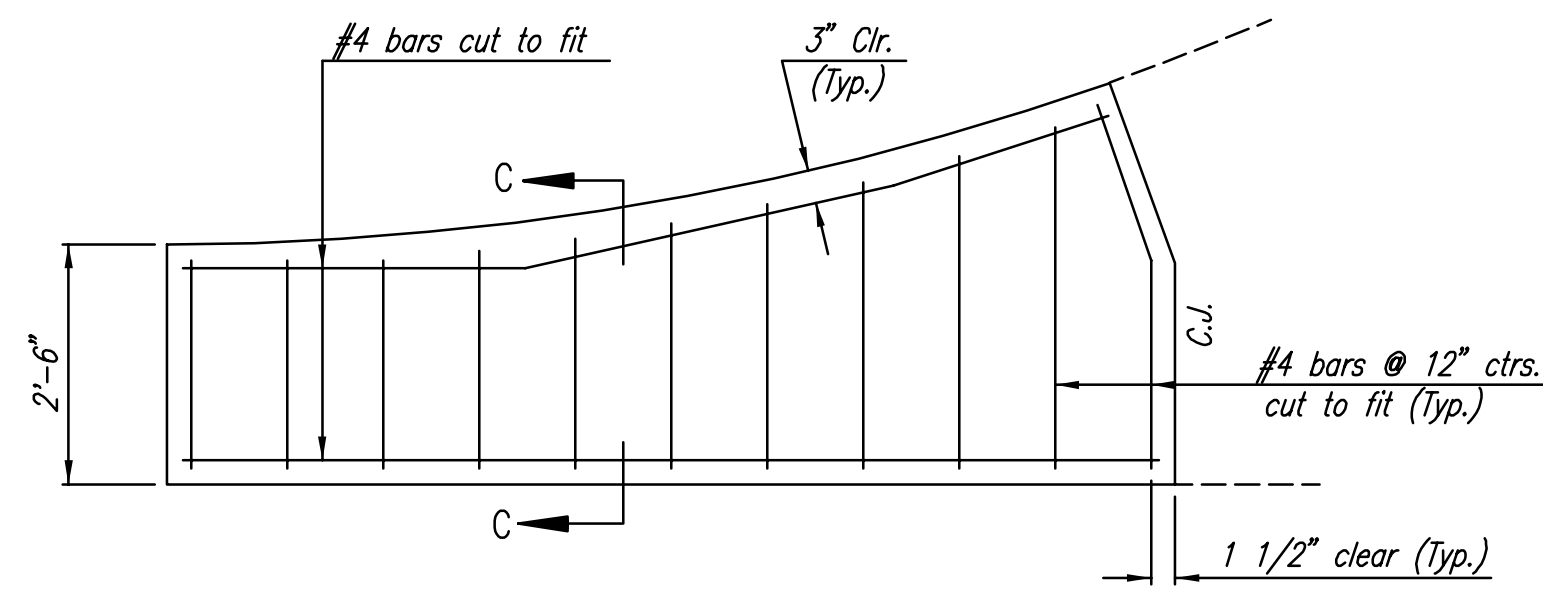
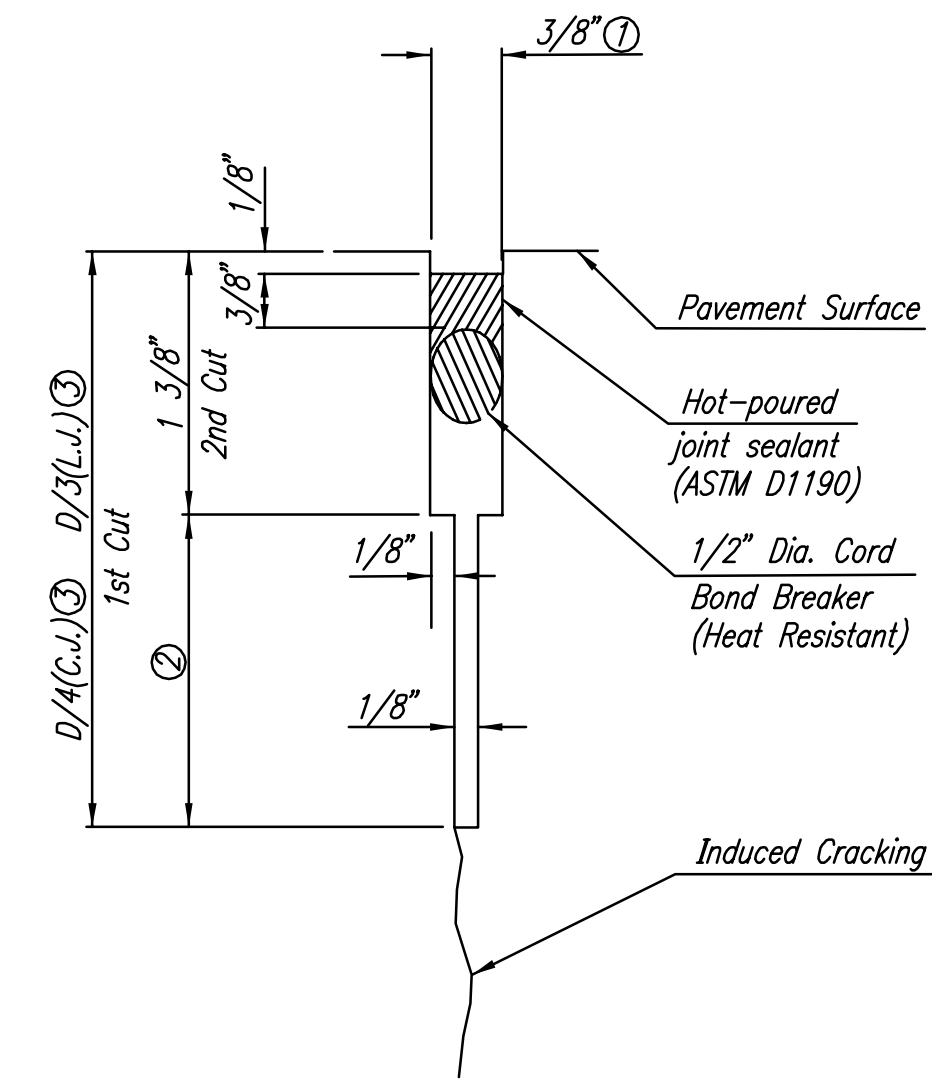


DSNR: BDB OPER: BJS SCALE: 1=10.00
 Q:\2004\04171\000\VALGUTDL 08-11-2004 03:16:25 pm



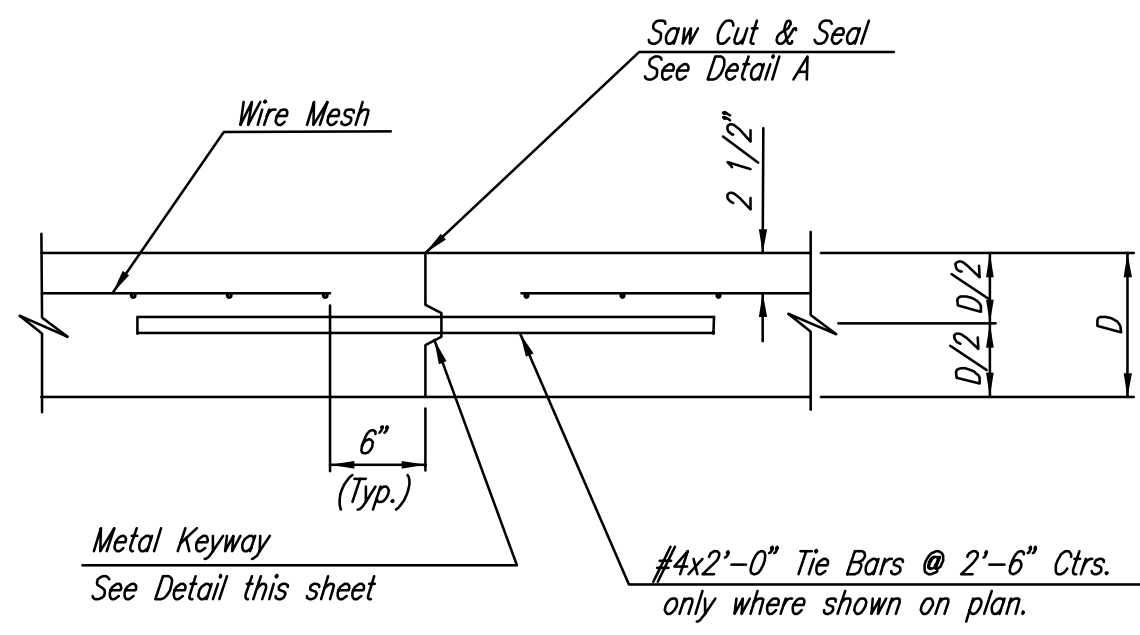
WING REINFORCING DETAIL

NOTE: OMIT WIRE FABRIC REINFORCING IN THIS SECTION.

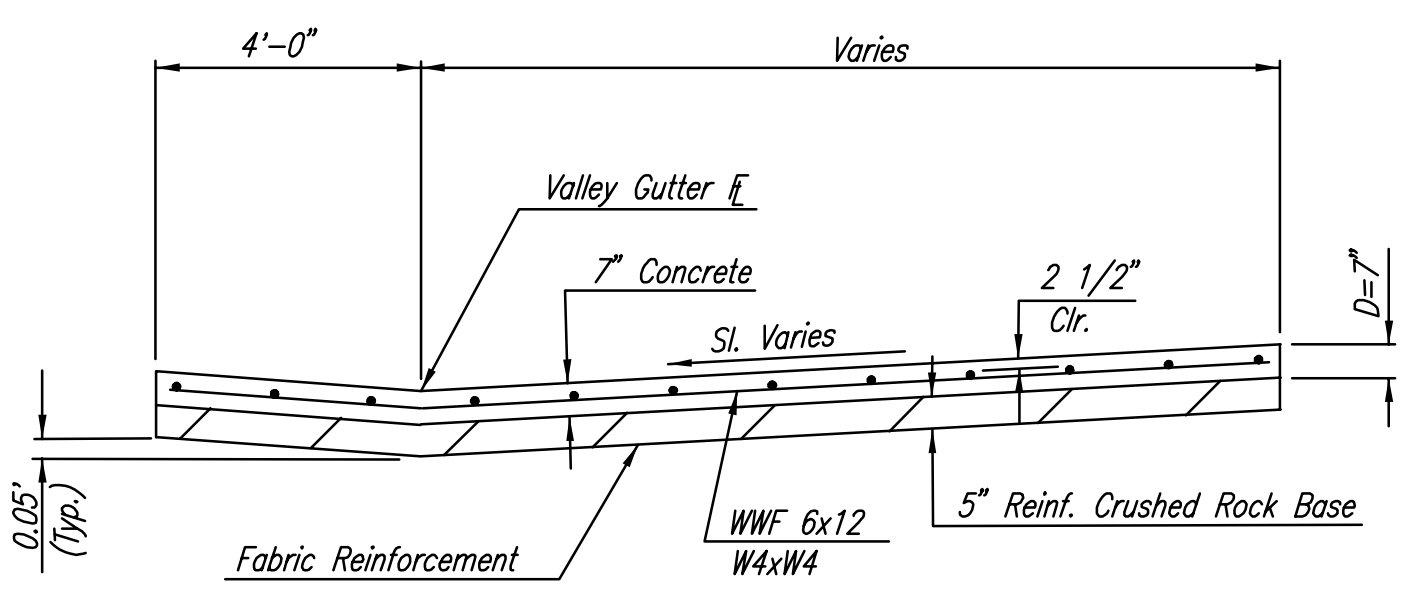


DETAIL A

- ① To be accomplished in 2 cuts for Longitudinal Joints and Contraction Joints. Initial cut to be 1/8" wide.
- ② Eliminate bottom of cut when metal keyway is used as part of Longitudinal or Transverse Construction Joint and at Doweled Construction Joint Locations.
- ③ 1 1/2" Minimum

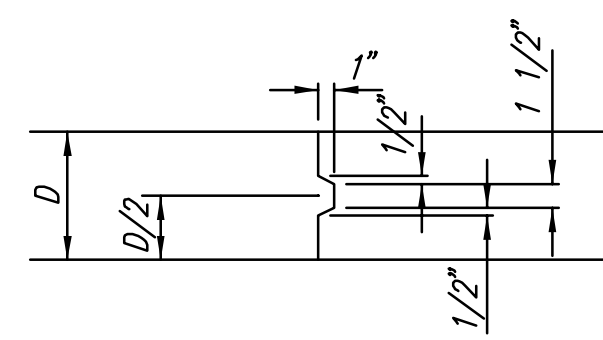


**LONGITUDINAL CONSTRUCTION JOINT DETAIL
REINFORCED PAVEMENT
(TRANSVERSE SECTION)
(ALTERNATE L.J.)**

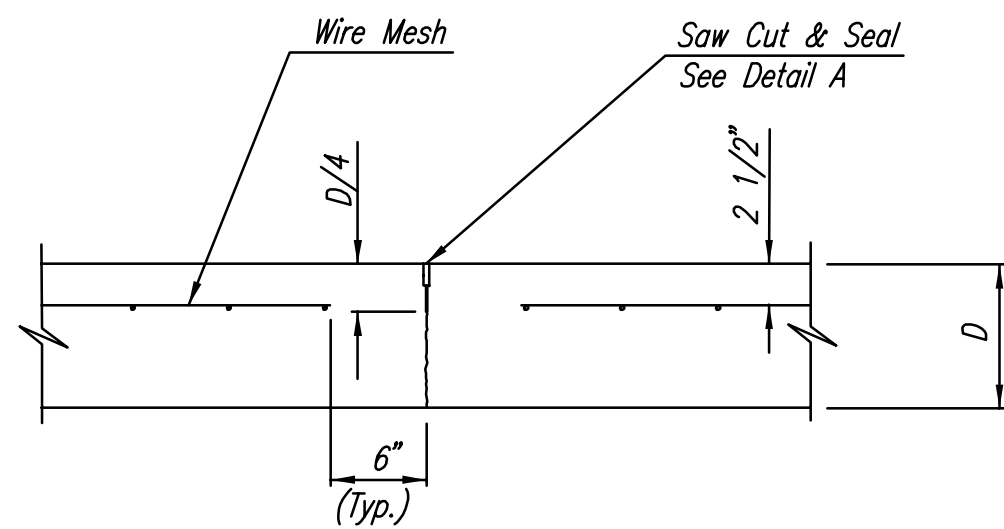


SECTION A-A

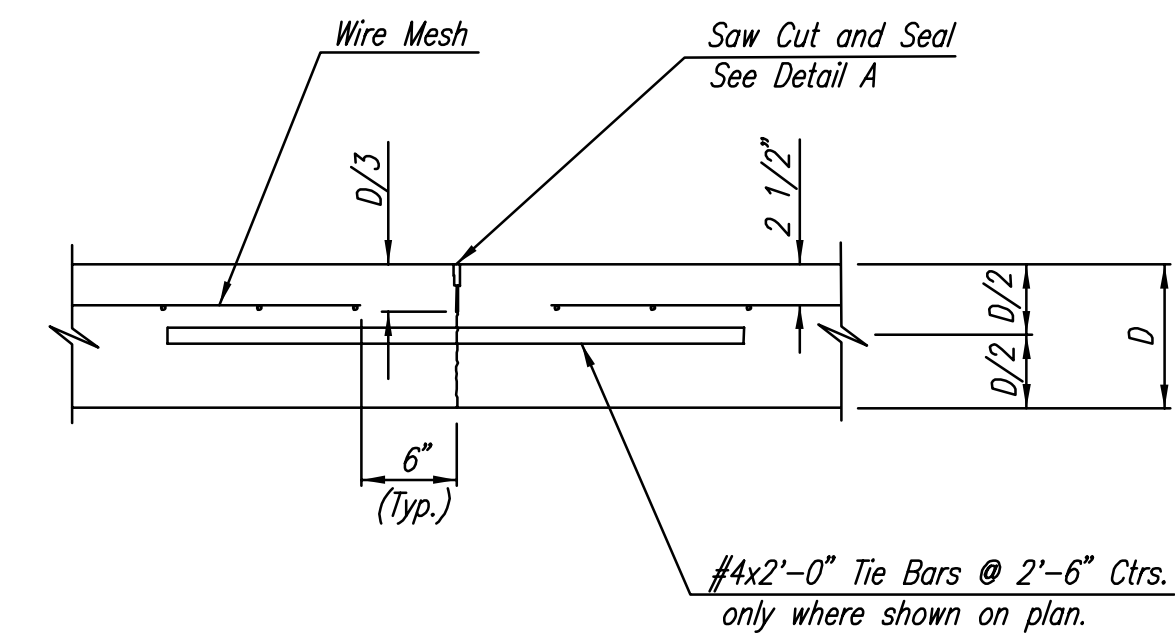
NOTE: OMIT REINFORCING MESH AT ALL JOINTS
 NOTE: ALL CONCRETE VALLEY GUTTER REINFORCEMENT SHALL BE ADEQUATELY SUPPORTED BY BAR CHAIRS IN THE REQUIRED POSITION UNLESS APPROVED OTHERWISE BY THE ENGINEER.



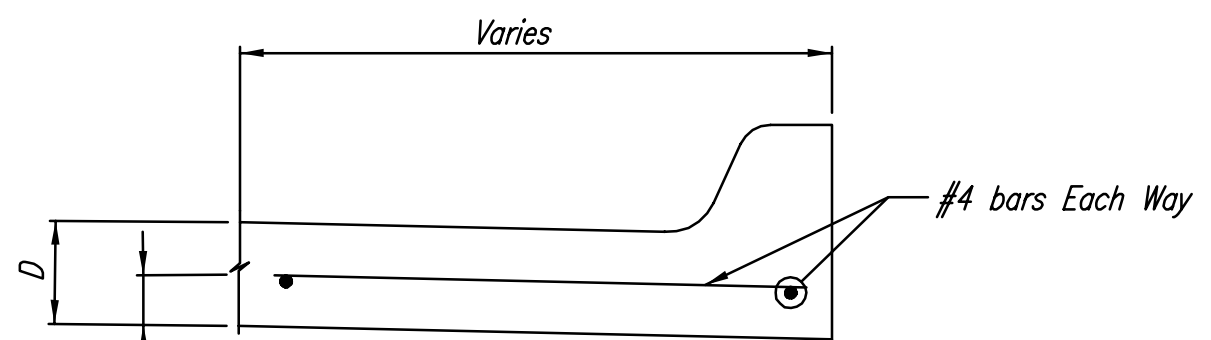
KEYWAY DETAIL



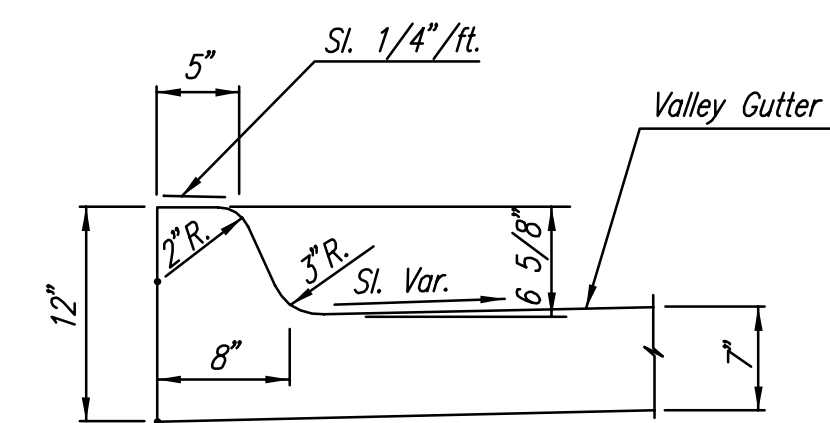
**CONTRACTION JOINT DETAIL
REINFORCED PAVEMENT
(C.J.)**



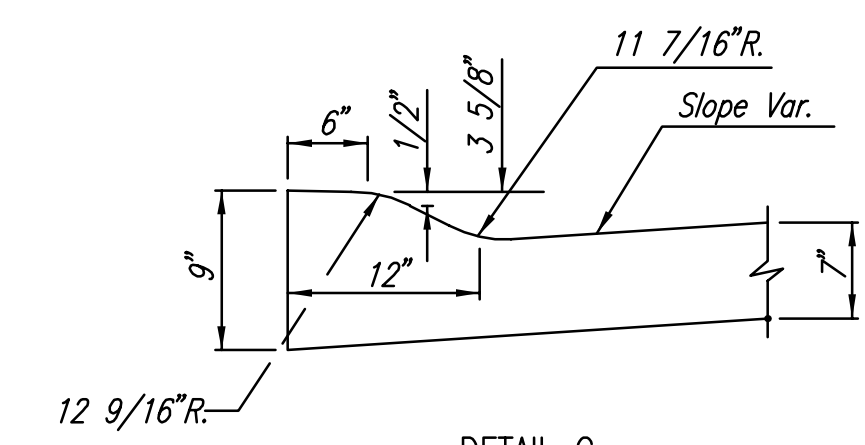
**LONGITUDINAL JOINT DETAIL
REINFORCED PAVEMENT
(TRANSVERSE SECTION)
(L.J.)**



SECTION C-C



DETAIL B



**DETAIL C
(ROLL-TYPE CURB)**

No.	Revision	By	Date
PRAIRIE POINTE-PHASE 1			
VALLEY GUTTER DETAILS			
JAMES L. ARMOUR, P.E.-ACTING CITY ENGINEER CITY OF WICHITA PROJECT NO. 472-84023			
Professional Engineering Consultants, P.A. 303 S. TOPEKA • WICHITA, KANSAS 67202 316-262-2691 • FAX 316-262-3003			
Designed by	BDB	Job No.	35-04171-000
Drawn by	BJS	Date	MAY 2002
			SH. 16 of 50