



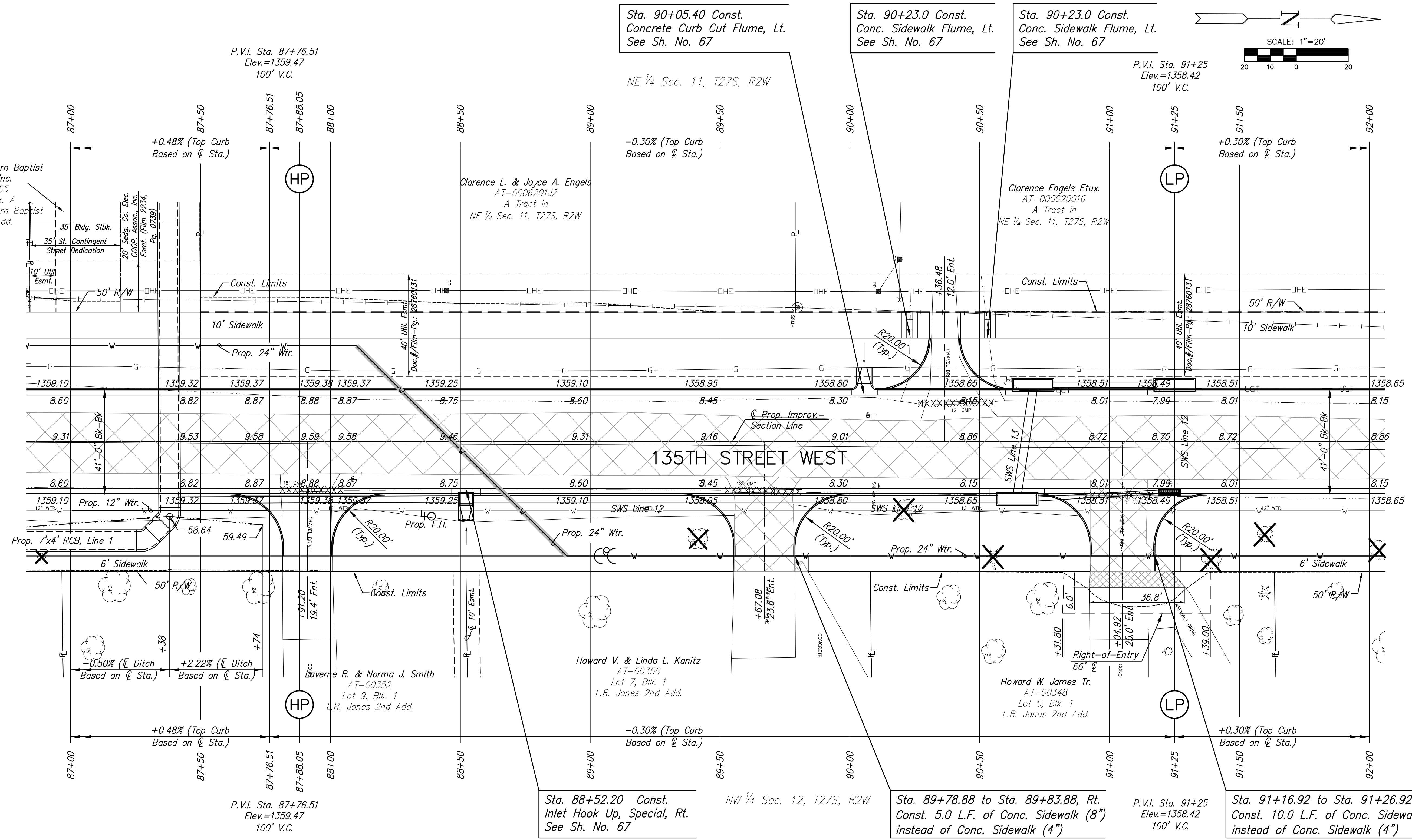
STREET IMPROVEMENTS FOR
135th Street West
from 13th Street to 21st Street North

PAVING PLAN
STA. 87+00
TO
STA. 92+00
SHEET TITLE
MKEC PROJ #10265
PROJECT NUMBER

JRA
DESIGN BY
WNU
DRAWN BY
JRA
CHECKED BY

ISSUED
February 2012
REVISED

SHEET NO.
13 of 231



- LEGEND**
- Pavement Removal
 - Brick Pavers
 - Culvert Removal
 - Construct Wheelchair Ramp See Sh. No. 65

PLOTTED: Thursday, February 16, 2012 @ 11:00AM

J:\Civil\10265\DWG\10265-Pav\10265-E9