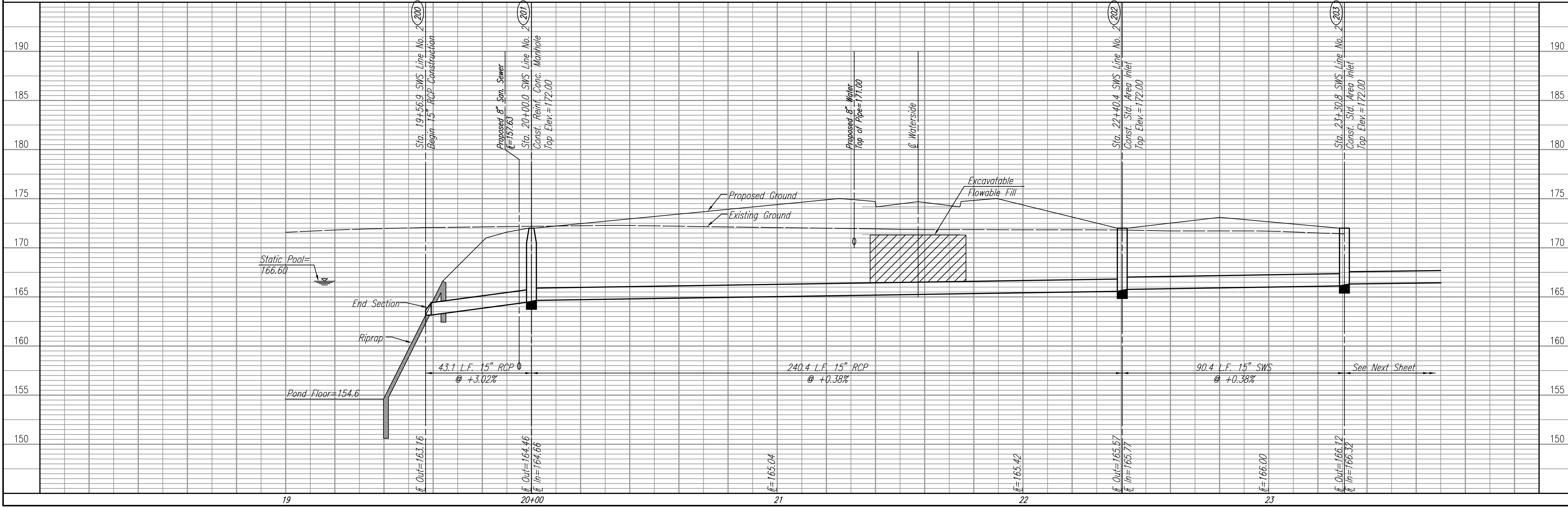


PLAN	CHECKED	CHECKED
BY		
DATE		

PROFILE	CHECKED	CHECKED
BY		
DATE		

DSWP: BDB OPER: BJS SCALE: 1"=20.00  
 Q:\2004\04171\000\SWS\LINE2-1 08-11-2004 02:47:33 pm



Install 27 S.Y.  
 Light Stone Riprap  
 See Sheet No. 26.

POND NO. 1  
 Static Pool=166.6  
 DWS 100=170.5  
 RESERVE C

Sta. 19+56.9 SWS Line No. 2  
 Begin 15" RCP Construction  
 Install 43.1 L.F. 15" RCP (SW)  
 (Including End Section)

CAUTION !!!  
 Proposed 8" San. Sewer  
 City of Wichita

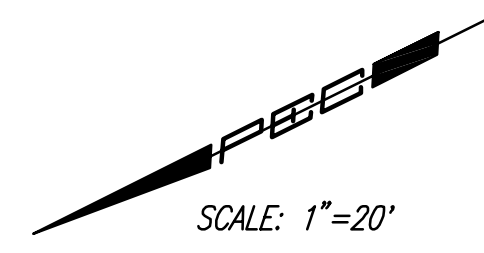
Sta. 20+00.0 SWS Line No. 2  
 Const. Reinf. Conc. Manhole  
 L=4'-0", W=4'-0"  
 Top Elev.=172.00  
 Install 240.4 L.F. 15" RCP (SW)  
 See Sheet No. 24.

CAUTION !!!  
 Proposed 8" Water  
 City of Wichita

Install 39 L.F.  
 Excavatable Flowable  
 Fill to Elev. 171.3

Sta. 22+40.4 SWS Line No. 2  
 Const. Std. Area Inlet  
 L=3'-10", W=5'-4"  
 Top Elev.=172.00  
 Install 90.4 L.F. 15" SWS (S)  
 See Sheet No. 23.

Sta. 23+30.8 SWS Line No. 2  
 Std. Area Inlet  
 L=3'-10", W=5'-4"



COORDINATE LIST		
POINT	NORTH	EAST
200	10,718.2583	8,320.0339
201	10,679.6436	8,300.8504
202	10,464.4800	8,193.7721
203	10,374.0526	8,195.4087

200 = COORDINATE POINT NO.  
 SEE SHEET NO. 3 FOR PLAT COORDINATES

**SWS LINE NO. 2**

PRAIRIE POINTE - PHASE 1

Professional Engineering Consultants, P.A.  
 303 S. TOPEKA, WICHITA, KANSAS 67202  
 316-262-2491 - FAX 316-262-3063

Designed By: BDB  
 Drawn By: BJS

Job No.: 35-04171-000  
 Date: MAY 2002

James L. Armour, P.E. - ACTING CITY ENGINEER  
 CITY OF WICHITA PROJECT NO. 472-84023

Sheet 19 of 50