

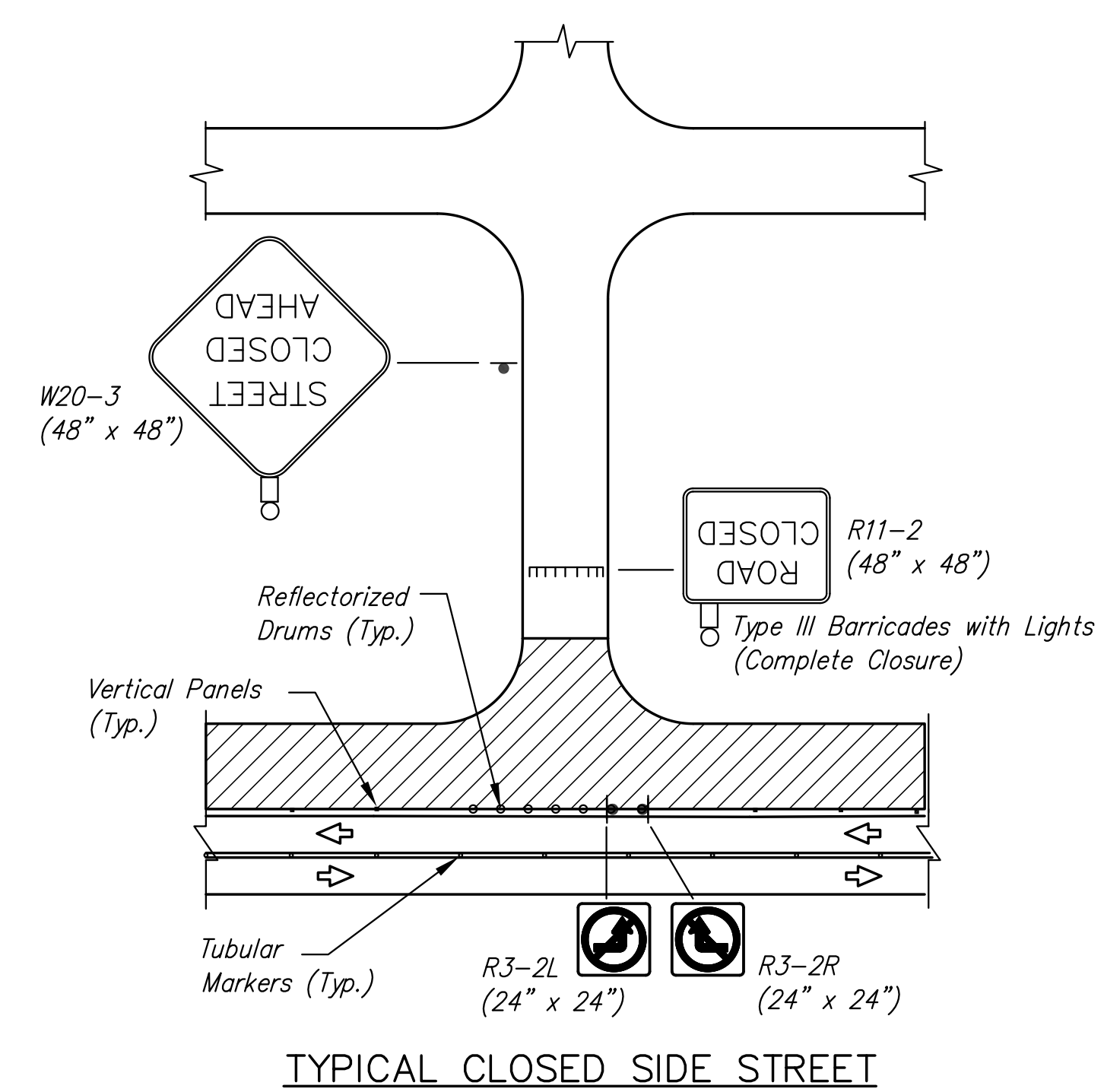
**STREET IMPROVEMENTS FOR
135th Street West
from 13th Street to 21st Street North**

TRAFFIC CONTROL DETAILS
SHEET TITLE
MKEC PROJ #10265
PROJECT NUMBER

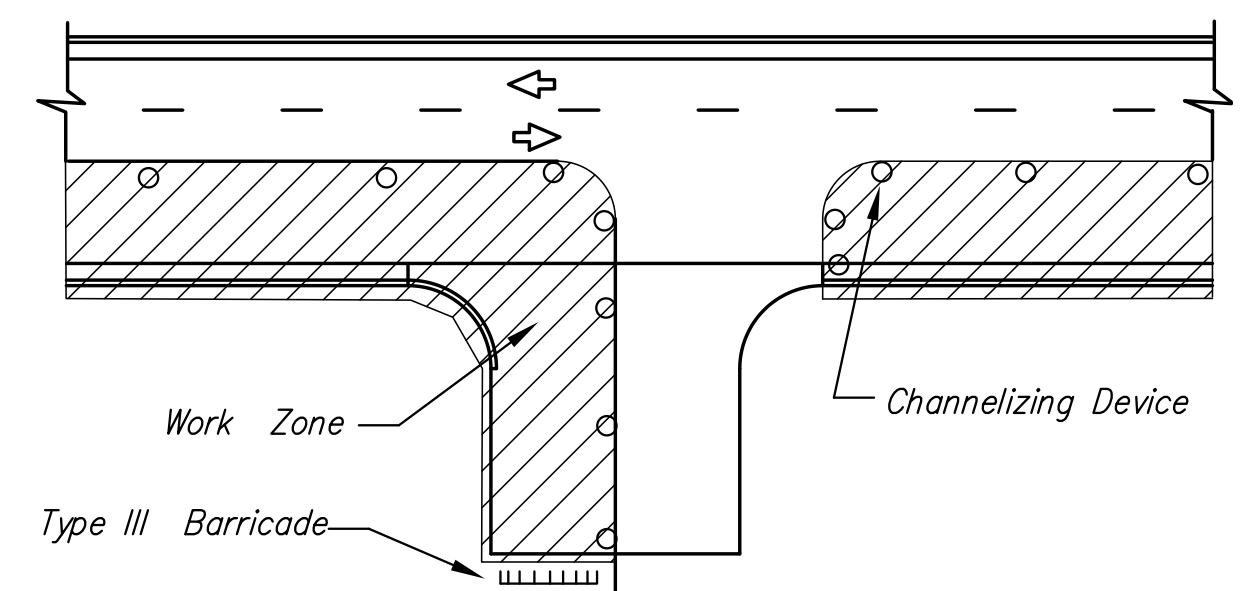
DESIGN BY: JRA
DRAWN BY: WNJ
CHECKED BY: JRA

ISSUED: February 2012
REVISED:

SHEET NO.
146 of 231

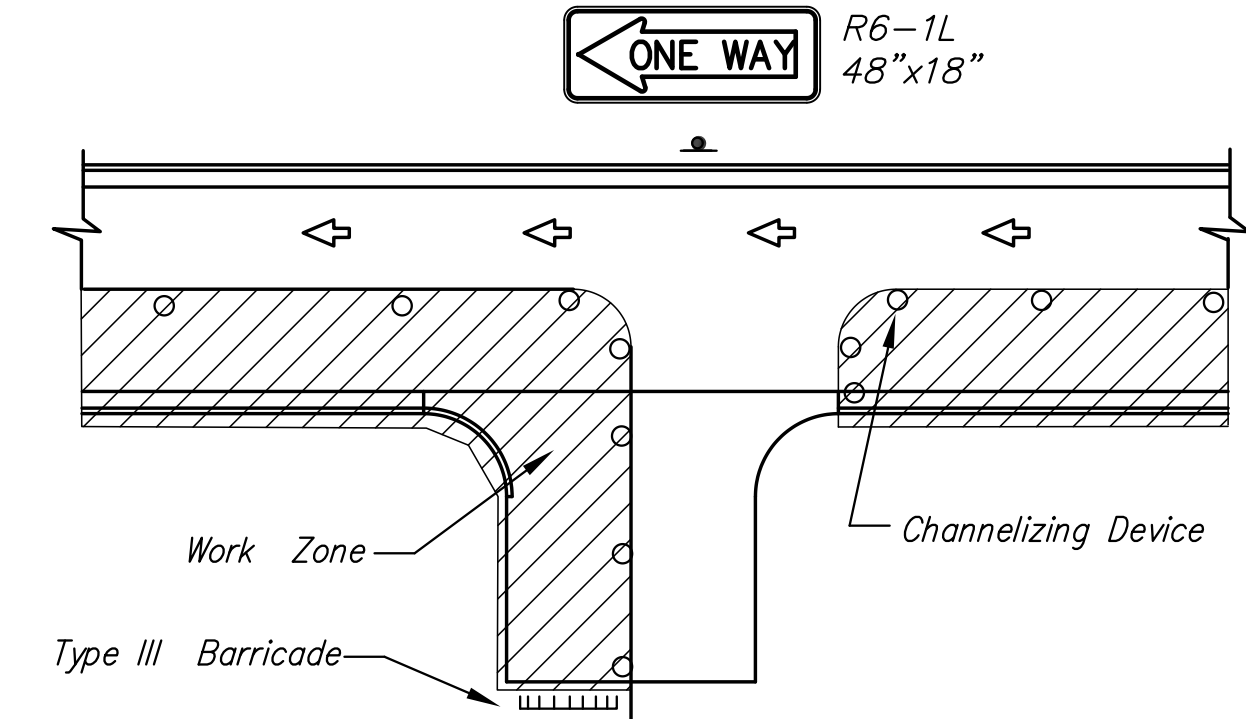


TYPICAL CLOSED SIDE STREET



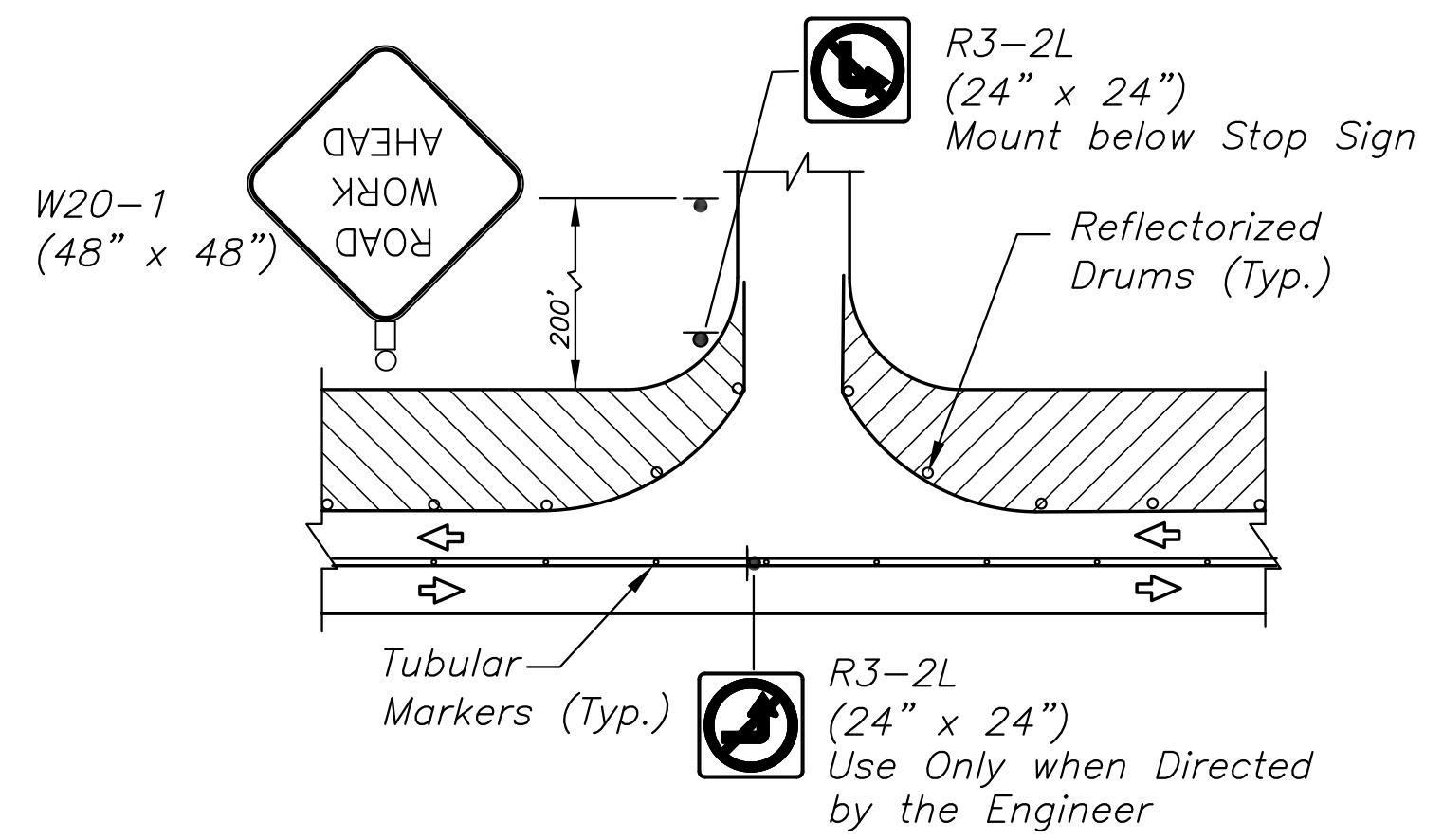
TYPICAL DRIVEWAY ENTRANCE CONSTRUCTION

Maintain access to businesses at all times. If a single property has multiple entrances, one entrance at a time may be closed for construction.

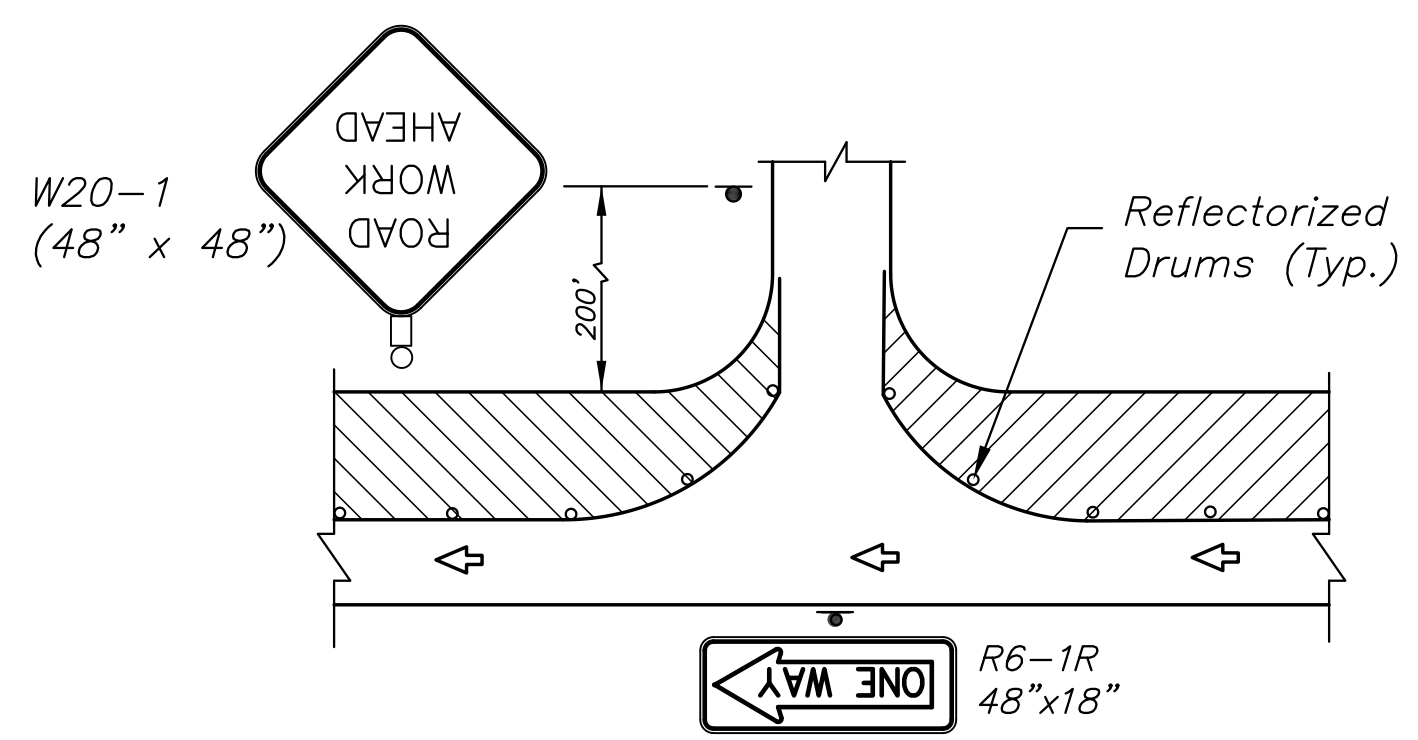


TYPICAL DRIVEWAY ENTRANCE CONSTRUCTION
(ONE-WAY TRAFFIC)

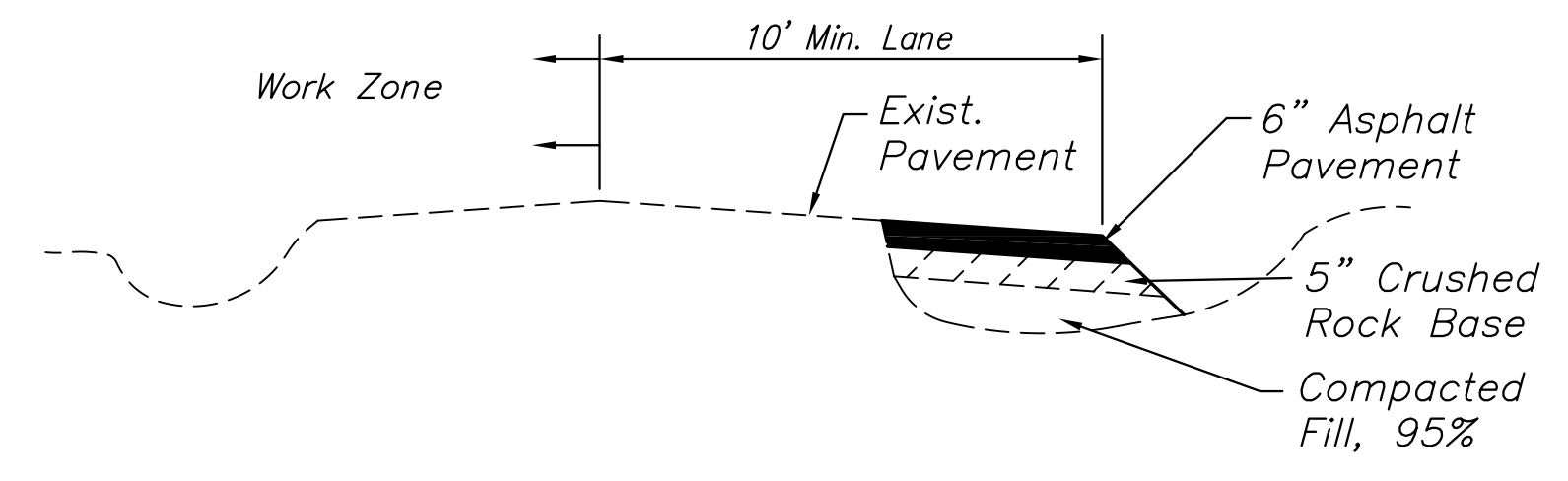
Maintain access to businesses at all times. If a single property has multiple entrances, one entrance at a time may be closed for construction.



TYPICAL ENTRANCE AND SIDE STREET
(TWO-WAY TRAFFIC ON MAIN ROAD)



TYPICAL ENTRANCE AND SIDE STREET
(ONE-WAY TRAFFIC ON MAIN ROAD)



Payment for "Temporary Asphalt Pavement (6") (Incl. 5" RCPB) (Widening)" will be per Square Yard of Asphalt Pavement placed. Crushed Rock Base and Compacted Fill are *Subsidiary*. Geogrid Reinforcing is not necessary. All other Temporary Asphalt for the purpose of the maintenance of Traffic through Construction shall be paid by the Square Yard for a nominal 6" thickness as "Temporary Asphalt Pavement (6)".

TEMPORARY ASPHALT WIDENING SECTION

LEGEND

- | | |
|---------------------------------|------------------------------------|
| Type III Barricades with lights | Work Area |
| Mount On Type III Barricade | Reflectorized Drum |
| Type B Warning Light | Tubular Marker |
| One Post Sign | Vertical Panel |
| Two Post Sign | Mount Overhead on Signal Cross-arm |
| Traffic Flow | |