



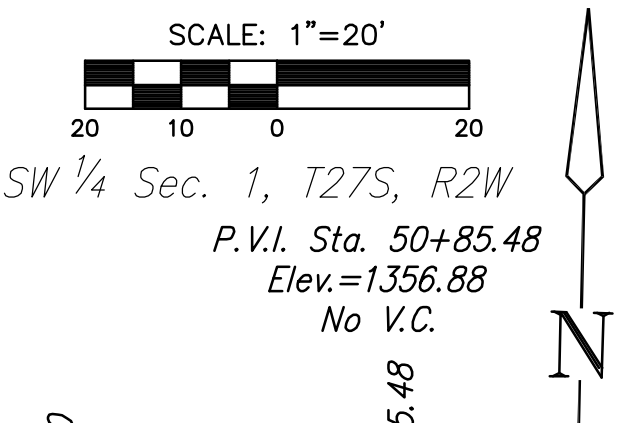
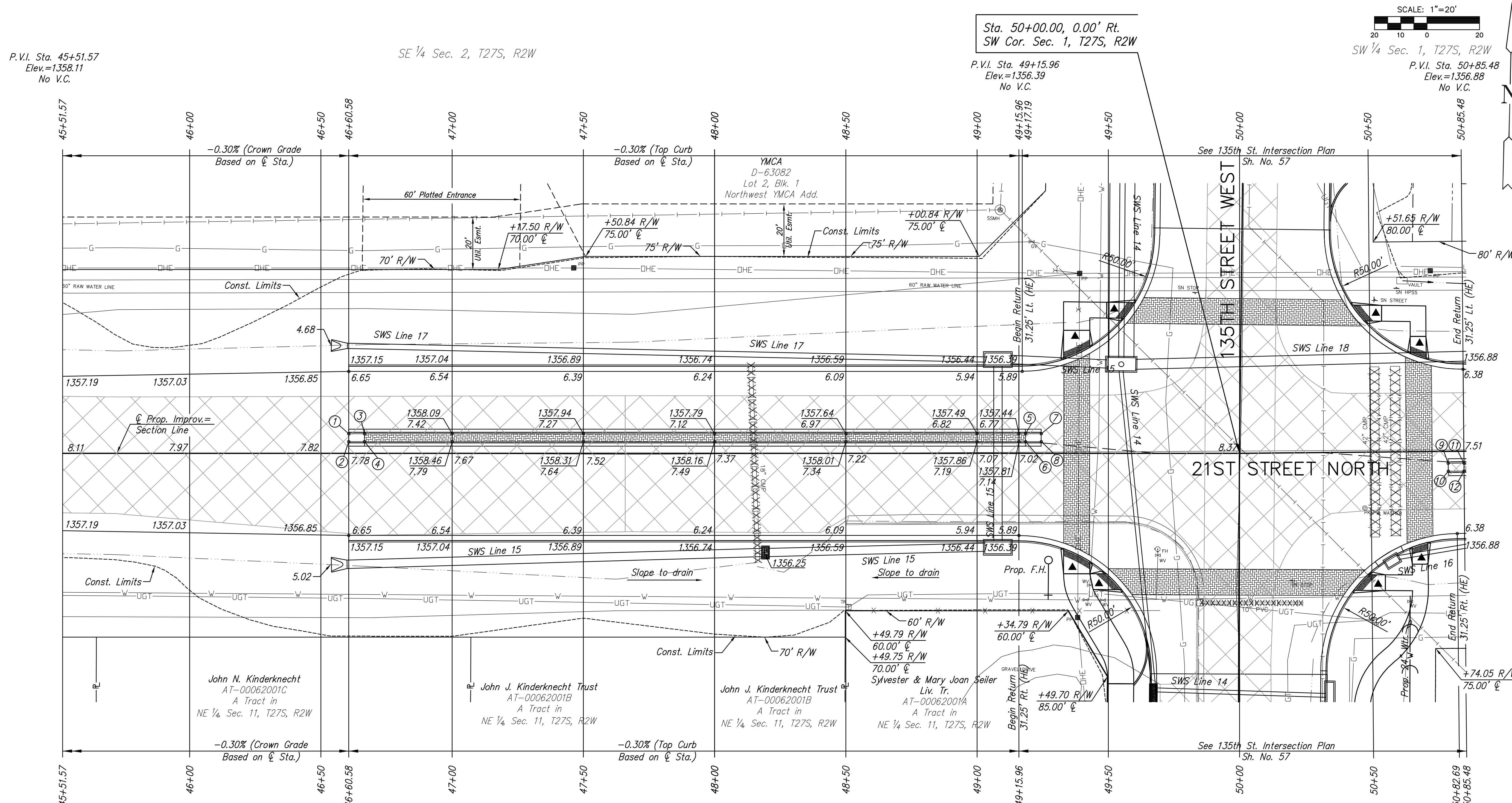
STREET IMPROVEMENTS FOR  
**135th Street West**  
from 13th Street to 21st Street North

**PAVING PLAN**  
STA. 46+50  
TO  
STA. 51+50  
SHEET TITLE  
MKEC PROJ #10265  
PROJECT NUMBER

JRA  
DESIGN BY  
WNU  
DRAWN BY  
JRA  
CHECKED BY

ISSUED  
February 2012  
REVISED

SHEET NO.  
**18 of 231**



Sta. 50+00.00, 0.00' Rt.  
SW Cor. Sec. 1, T27S, R2W  
P.V.I. Sta. 49+15.96  
Elev.=1356.39  
No V.C.

P.V.I. Sta. 45+51.57  
Elev.=1358.11  
No V.C.

SE 1/4 Sec. 2, T27S, R2W

SW 1/4 Sec. 1, T27S, R2W  
P.V.I. Sta. 50+85.48  
Elev.=1356.88  
No V.C.

P.V.I. Sta. 45+51.57  
Elev.=1358.11  
No V.C.

P.V.I. Sta. 49+15.96  
Elev.=1356.39  
No V.C.

P.V.I. Sta. 50+85.48  
Elev.=1356.88  
No V.C.

NE 1/4 Sec. 11, T27S, R2W

Point No.	Station	Offset to Back	Elevation	
			Flowline	Top Curb
1	46+60.58	7.50'	1357.53	1357.53
2	46+60.58	4.50'	1357.90	1357.90
3	46+66.58	7.50'	1357.51	1358.18
4	46+66.58	4.50'	1357.88	1358.55
5	49+18.46	7.50' Lt.	1356.79	1357.46
6	49+18.46	4.50' Lt.	1357.13	1357.80
7	49+24.46	7.50' Lt.	1356.95	1356.95
8	47+24.46	4.50' Lt.	1357.10	1357.10
9	50+79.48	4.50' Rt.	1357.58	1357.58
10	50+79.48	7.50' Rt.	1357.38	1357.38
11	50+85.48	4.50' Rt.	1357.62	1358.29
12	50+85.48	7.50' Rt.	1357.24	1357.91

- LEGEND**
- Pavement Removal
  - Brick Pavers
  - Culvert Removal
  - Construct Wheelchair Ramp See Sh. No. 65

- SW Cor. Sec. 1, T27S, R2W  
Sta. 50+00.00, 0.00' Rt.
1. Found 1/4" Pipe w/Nail 3" below asphalt surface 47.88' SW
  2. Top nut of fire hydrant 85.07' NW
  3. ROW marker 91.87' NW
  4. 3 nails in E fc of PP 60.84' NE
  5. Notch cut in cmp cross road pipe
  6. N=1698399.090, E=1602031.209

PLOTED: Thursday, February 16, 2012 11:01AM

J:\Civil\10265\DWG\10265-Pav\10265-E14