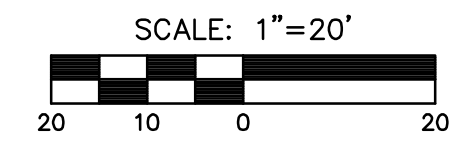
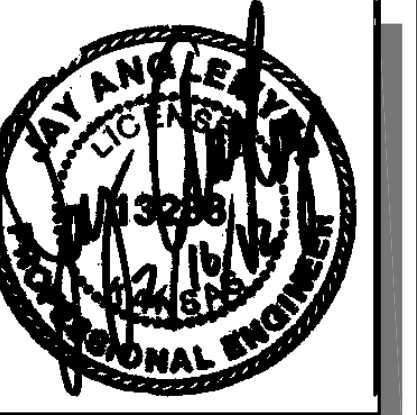


Sta. 55+15.60 Const.
Asphalt Entrance, Lt.
Install 24" E.P. (RCP)
with End Sections, Lt.
Remove exist. 24"x36.0' CMP
See Sh. No. 63

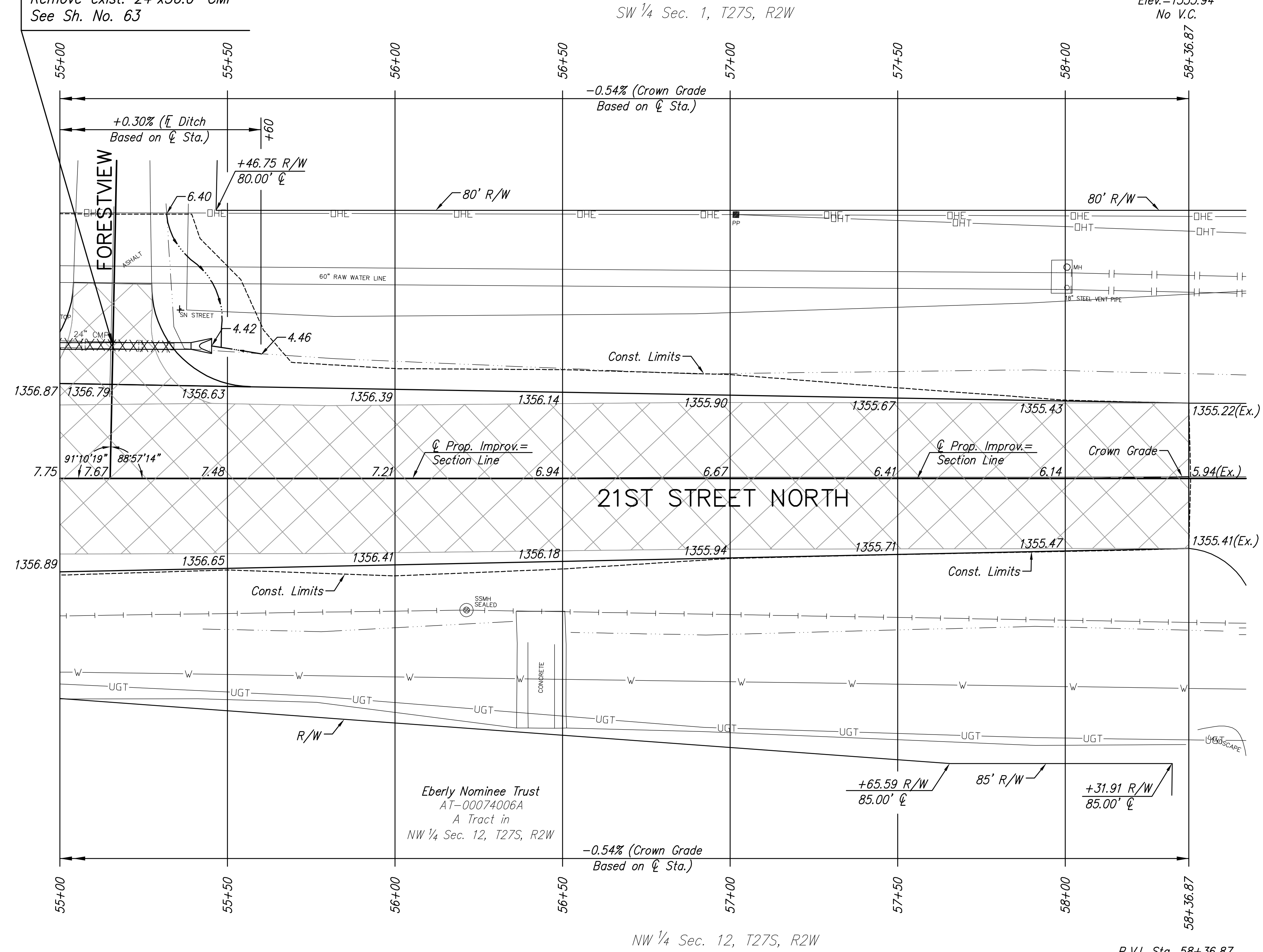


MKEC
ENGINEERING
CONSULTANTS, INC.

411 N. WEBB ROAD
WICHITA, K.S. 67206
316-684-9600



STREET IMPROVEMENTS FOR
135th Street West
from 13th Street to 21st Street North



SW 1/4 Sec. 1, T27S, R2W

P.V.I. Sta. 58+36.87
Elev.=1355.94
No V.C.

NW 1/4 Sec. 12, T27S, R2W

P.V.I. Sta. 58+36.87
Elev.=1355.94
No V.C.

Eberly Nominee Trust
AT-00074006A
A Tract in
NW 1/4 Sec. 12, T27S, R2W

- S 1/4 Cor. Sec. 1, T27S, R2W
Sta. 75+93.67, 0.00' Rt.
1. Found 1/4" Pipe 3" below asphalt surface
 2. Pk nail in 36" Tree 105.13' NE
 3. 3 nails in PP 112.61' NW
 4. 1/2" bar w/Savoy cap 60.17' S
 5. 3 nails in top of corner post 78.41' SE
 6. N=1698485.164, E=1604623.444

LEGEND

- Pavement Removal
- Brick Pavers
- XXXXXXXXX Culvert Removal
- Construct Wheelchair Ramp
See Sh. No. 65

PAVING PLAN
STA. 57+00
TO
STA. 58+50

SHEET TITLE
MKEC PROJ #10265
PROJECT NUMBER

DESIGN BY JRA
DRAWN BY WNJ
CHECKED BY JRA

ISSUED February 2012
REVISED

SHEET NO.
20 of 231

PLOTTED: Thursday, February 16, 2012 11:02AM

J:\Civil\10265\DWG\Pay\10265-E16