



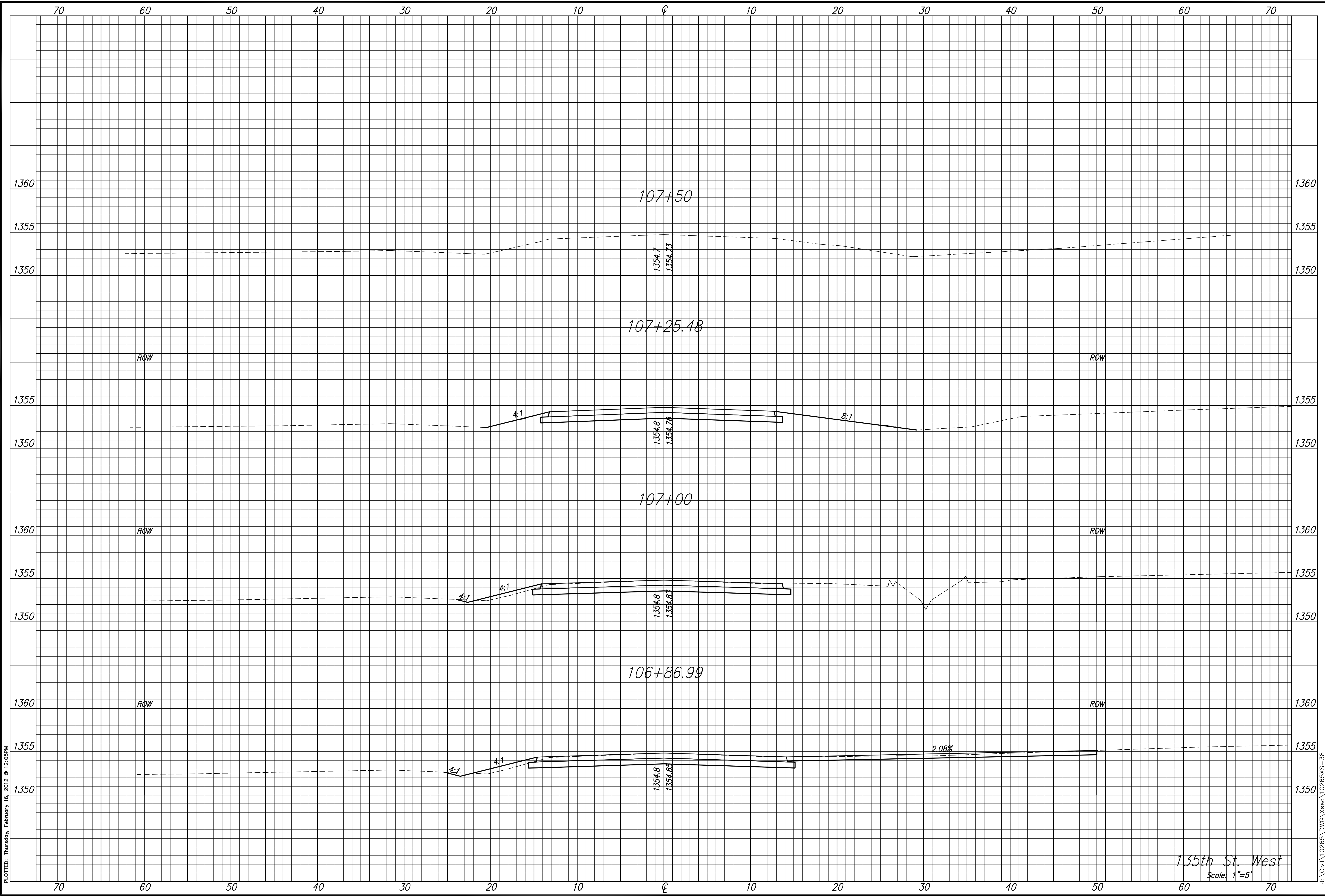
STREET IMPROVEMENTS FOR
135th Street West
from 13th Street to 21st Street North

CROSS SECTIONS
STA. 106+86.99
TO
STA. 107+50.00
SHEET TITLE
MKEC PROJ #10265
PROJECT NUMBER

DESIGN BY: JRA
DRAWN BY: DPG
CHECKED BY: JRA

ISSUED: February 2012
REVISED:

SHEET NO.
206 of 231



PLOTTED: Thursday, February 16, 2012 @ 12:05PM

J:\Civil\10265\DWG\Xsec\10265XS-38

135th St. West
Scale: 1"=5'