

SW 1/4 Sec. 12, T27S, R2W

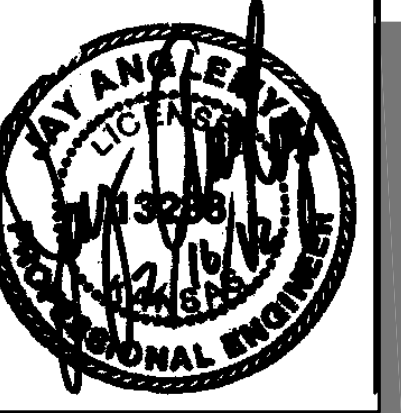
CRADON LLC  
D 61418  
Lot 2, Blk. A  
Blattner Add.

Sta. 110+90.00 Construct  
2-8'x4'x121.5' RCB  
with Pedestrian Rail Lt. & Rt.  
See Sh. No. 93



**MKEC**  
ENGINEERING  
CONSULTANTS, INC.

411 N. WEBB ROAD  
WICHITA, K.S. 67206  
316 - 684 - 9600



**STREET IMPROVEMENTS FOR  
135th Street West**  
from 13th Street to 21st Street North

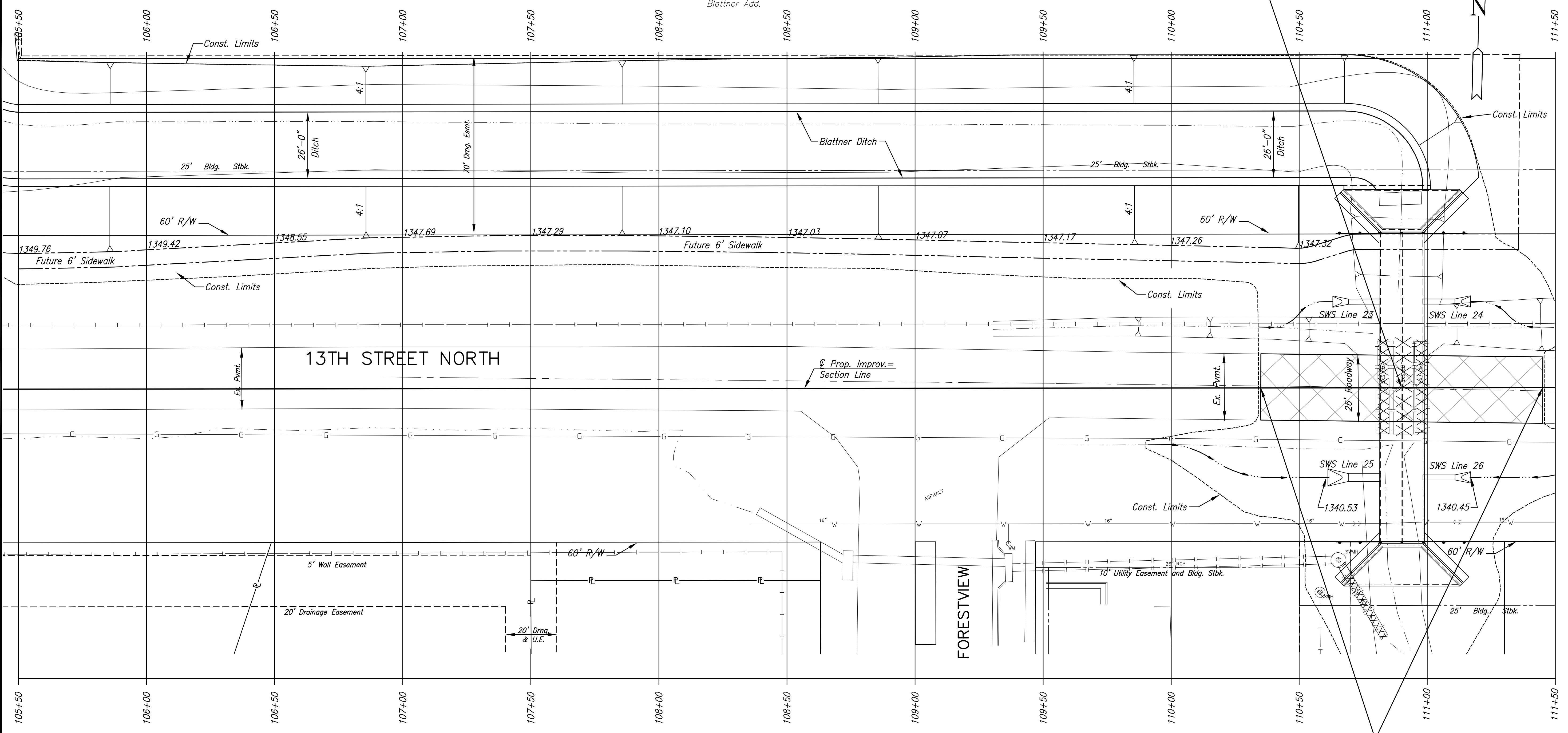
**PAVING PLAN  
13TH STREET  
STA. 105+50 TO  
STA. 111+50**

SHEET TITLE  
MKEC PROJ #10265  
PROJECT NUMBER

DESIGN BY: JRA  
DRAWN BY: WNU  
CHECKED BY: JRA

ISSUED: February 2012  
REVISED:

SHEET NO.  
**21 of 231**



KELSEY INVESTMENTS INC.  
D 58899  
RESERVE "C"  
Liberty Park 2nd. Add.

NW 1/4 Sec. 13, T27S, R2W

Sta. 110+35 to Sta. 222+45.00 Remove  
existing pavement and construct 316.5 S.Y.  
of new asphalt pavement  
See Typical Section Sh. No. 4

- SW Cor. Sec. 12, T27S, R2W  
Sta. 47+37.77, 0.00' Rt.
1. Found 2" Aluminum Cap
  2. Nail & Cap in HLP 46.13' NW
  3. Nail & Cap in SE fc of HLP 45.82' NE
  4. COW BM Disc 41.52' SW
  5. "X" cut on SE bolt metal HLP 43.48' SW
  6. N=1693137.947, E=1602138.152

**LEGEND**

- Pavement Removal
- Brick Pavers
- XXXXXXXXX Culvert Removal
- Construct Wheelchair Ramp  
See Sh. No. 65

PLOTTED: Thursday, February 16, 2012 @ 11:02AM

J:\Civil\10265\DWG\Pay\10265-E17