



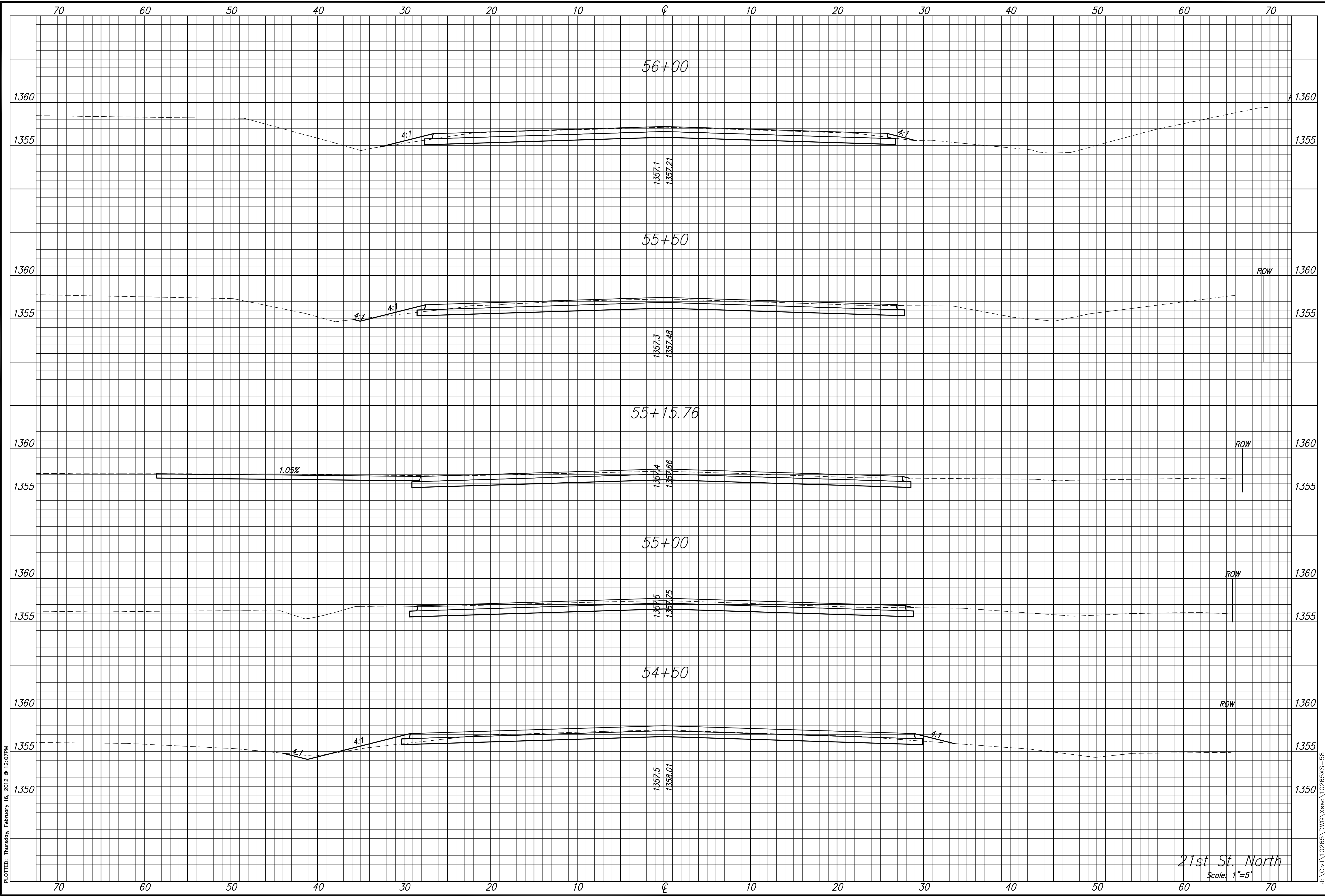
STREET IMPROVEMENTS FOR
135th Street West
from 13th Street to 21st Street North

CROSS SECTIONS
STA. 54+50.00
TO
STA. 56+00.00
SHEET TITLE
MKEC PROJ #10265
PROJECT NUMBER

DESIGN BY: JRA
DRAWN BY: DPG
CHECKED BY: JRA

ISSUED: February 2012
REVISED:

SHEET NO.
215 of 231



PLOTTED: Thursday, February 16, 2012 @ 12:07PM

J:\Civil\10265\DWG\Xsec\10265XS-58

21st St. North
Scale: 1"=5'