



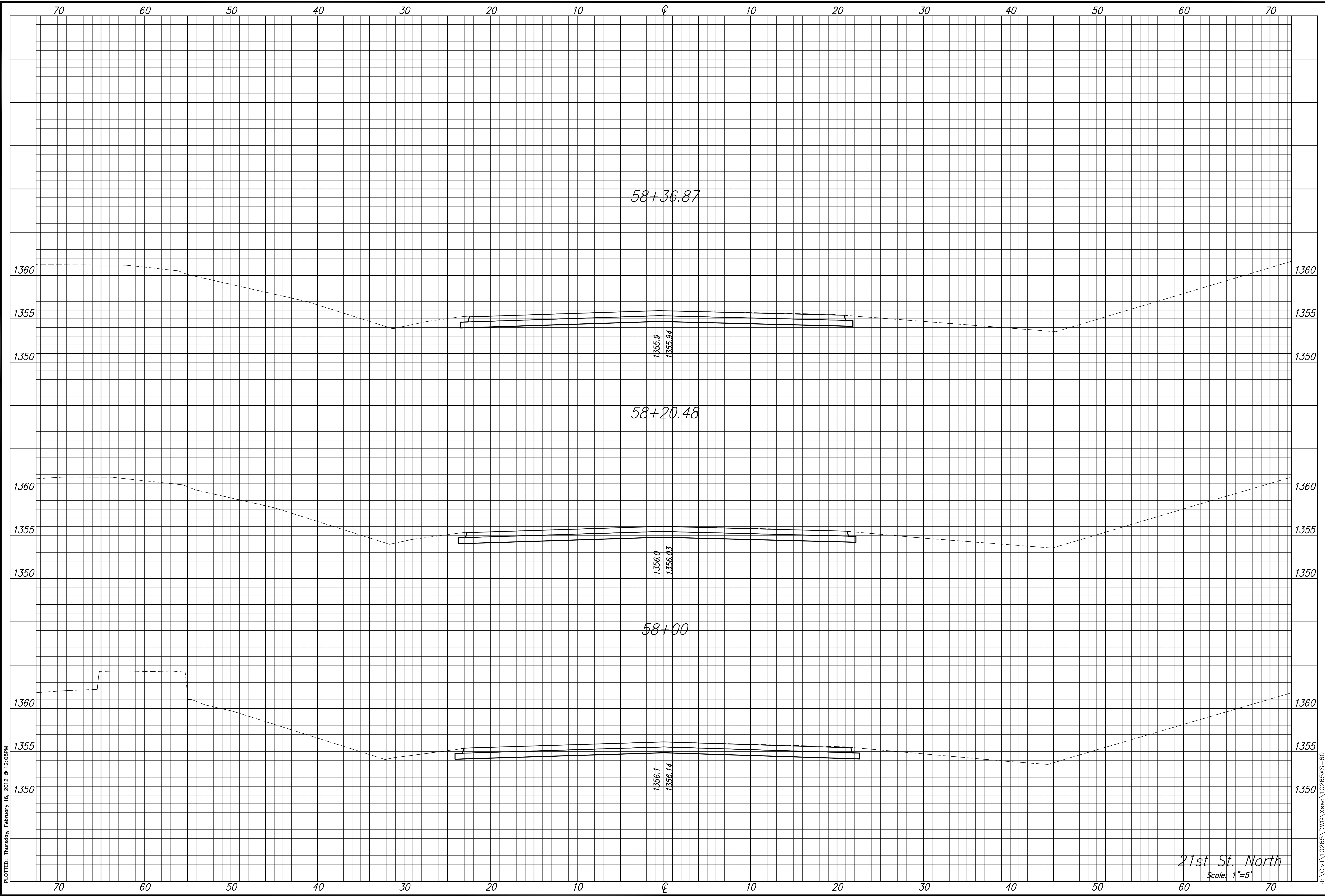
STREET IMPROVEMENTS FOR
135th Street West
from 13th Street to 21st Street North

CROSS SECTIONS
STA 58+00.00
TO
STA 58+36.87
SHEET TITLE
MKEC PROJ #10265
PROJECT NUMBER

DESIGN BY JRA
DRAWN BY DPG
CHECKED BY JRA

ISSUED February 2012
REVISED _____

SHEET NO.
217 of 231



PLOTTED: Thursday, February 16, 2012 @ 12:08PM

J:\Civil\10265\DWG\Xsec\10265XS-60

21st St. North
Scale: 1"=5'