



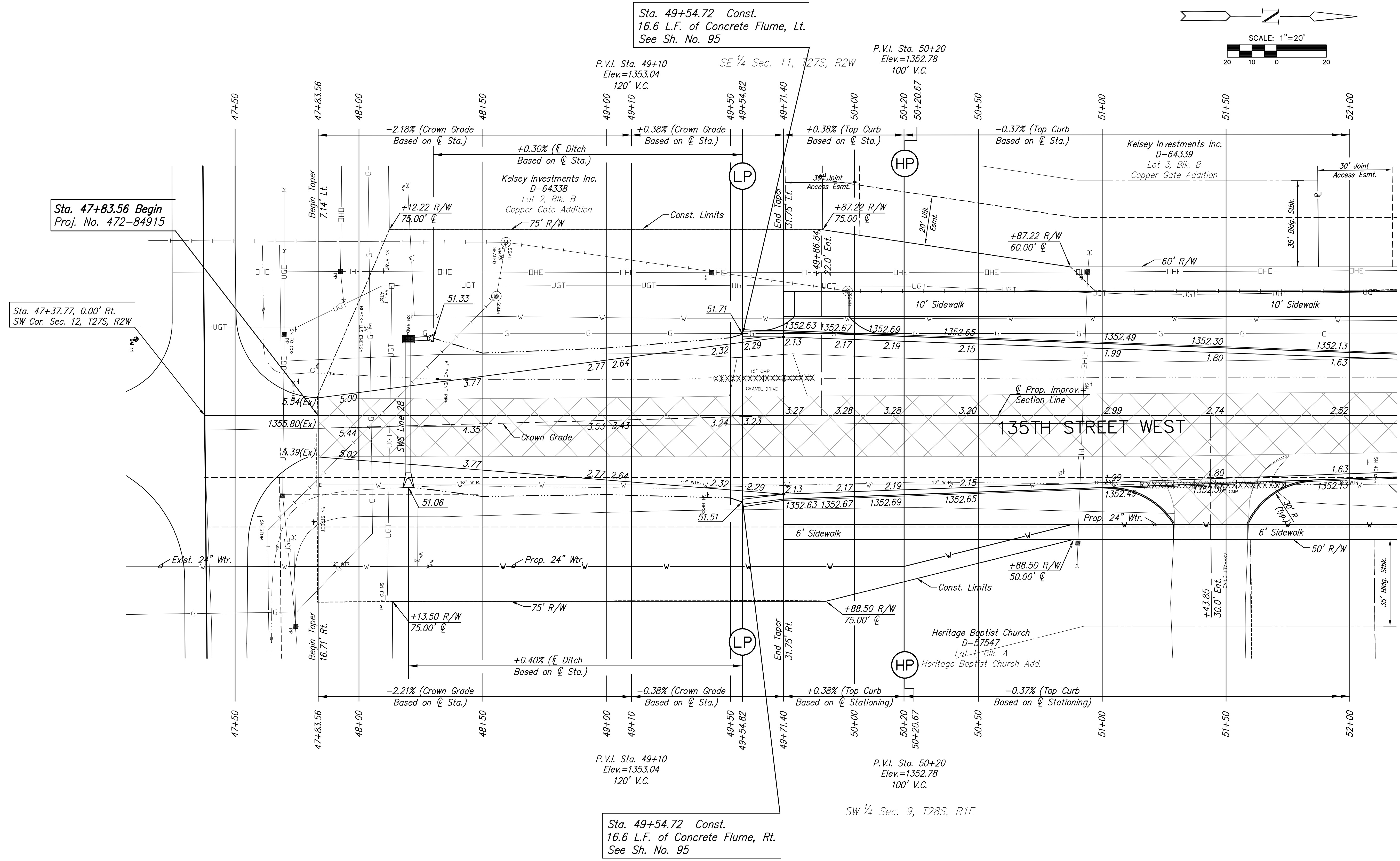
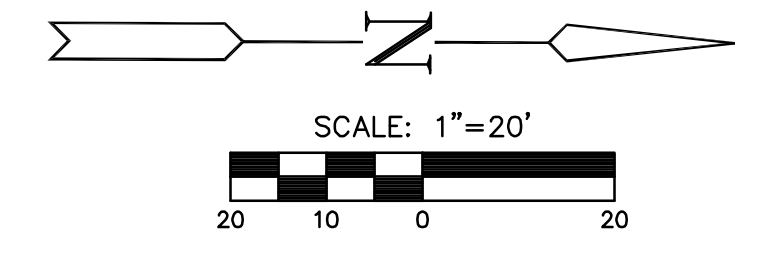
STREET IMPROVEMENTS FOR
135th Street West
from 13th Street to 21st Street North

PAVING PLAN
STA. 47+83.56
TO
STA. 52+00
SHEET TITLE
MKEC PROJ #10265
PROJECT NUMBER

JRA
DESIGN BY
WNU
DRAWN BY
JRA
CHECKED BY

ISSUED
February 2012
REVISED

SHEET NO.
5 of 231



Sta. 47+83.56 Begin
Proj. No. 472-84915

Sta. 47+37.77, 0.00' Rt.
SW Cor. Sec. 12, T27S, R2W

Sta. 49+54.72 Const.
16.6 L.F. of Concrete Flume, Lt.
See Sh. No. 95

P.V.I. Sta. 49+10
Elev.=1353.04
120' V.C.

P.V.I. Sta. 50+20
Elev.=1352.78
100' V.C.

P.V.I. Sta. 49+10
Elev.=1353.04
120' V.C.

P.V.I. Sta. 50+20
Elev.=1352.78
100' V.C.

Sta. 49+54.72 Const.
16.6 L.F. of Concrete Flume, Rt.
See Sh. No. 95

- SW Cor. Sec. 12, T27S, R2W
Sta. 47+37.77, 0.00' Rt.
1. Found 2" Aluminum Cap 46.13' NW
 2. Nail & Cap in HLP 45.82' NE
 3. Nail & Cap in SE fc of HLP 41.52' SW
 4. COW BM Disc 43.48' SW
 5. "X" cut on SE bolt metal HLP
 6. N=1693137.947, E=1602138.152

BM #11 COW Disc on NE cor. HLP base @ SW cor. 13th & 135th
Elev.=1356.095 NAVD 88 Sta. 47+10.13, 30.78' Lt.

LEGEND

- Pavement Removal
- Brick Pavers
- XXXXXXXXX Culvert Removal
- Construct Wheelchair Ramp
See Sh. No. 65

PLOTED: Thursday, February 16, 2012 10:59AM

J:\Civil\10265\DWG\10265-Pav\10265-E1