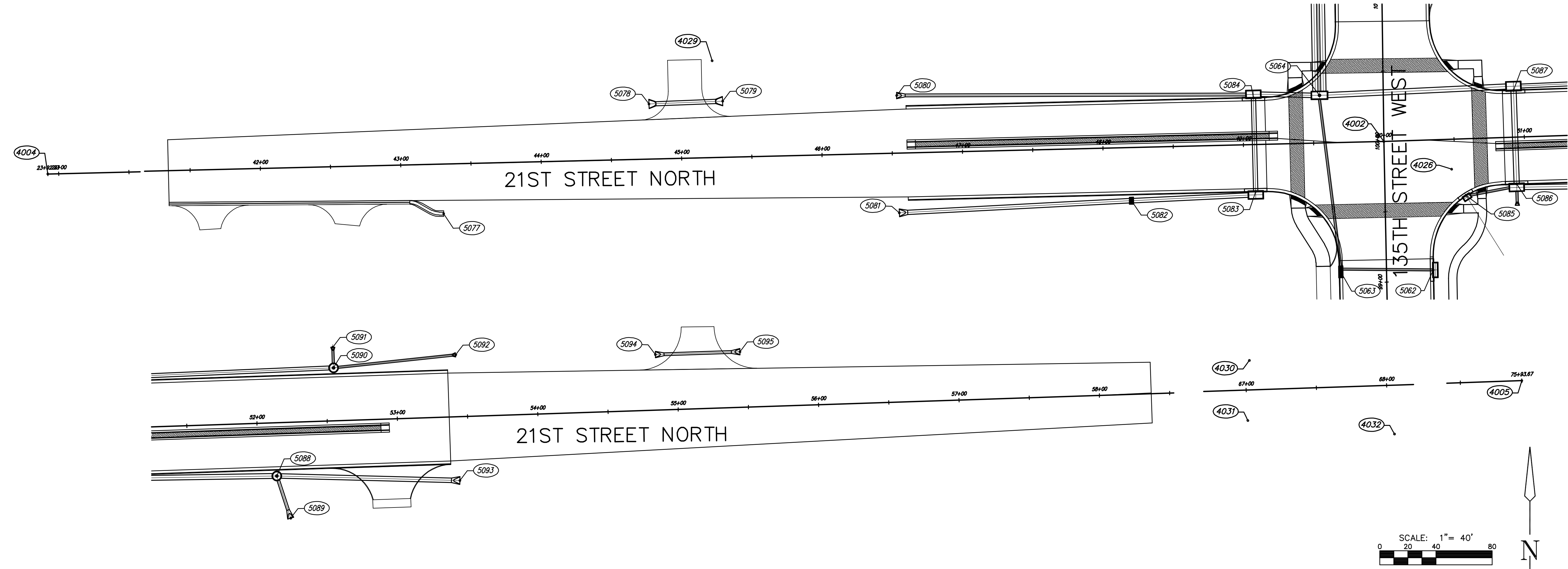


STREET IMPROVEMENTS FOR
135th Street West
from 13th Street to 21st Street North



SWS POINTS TABLE			
POINT NUMBER	NORTHING	EASTING	DESCRIPTION
5062	1698307.7466	1602066.3357	INLET
5063	1698306.3990	1602000.5995	INLET
5064	1698431.9800	1601985.3761	MH
5077	1698347.8057	1601361.9732	FLUME
5078	1698425.7837	1601508.1030	END SEC
5079	1698427.8129	1601560.5972	END SEC
5080	1698431.8745	1601684.4525	END SEC
5081	1698348.3996	1601686.3236	END SEC
5082	1698357.0162	1601851.5786	END SEC
5083	1698363.6403	1601939.9864	INLET
5084	1698430.1211	1601938.3900	INLET
5085	1698360.7944	1602089.6139	INLET
5086	1698368.9608	1602125.7389	INLET
5087	1698435.4241	1602123.5321	INLET
5088	1698368.4261	1602245.2355	MH
5089	1698338.3745	1602255.0927	END SEC
5090	1698445.3070	1602285.5692	MH
5091	1698459.9389	1602285.0834	END SEC
5092	1698454.5630	1602372.5566	END SEC
5093	1698365.1710	1602375.5248	END SEC
5094	1698454.7258	1602514.7108	END SEC
5095	1698456.7236	1602574.8787	END SEC

CONTROL POINTS TABLE			
POINT NUMBER	NORTHING	EASTING	DESCRIPTION
4000	1693137.9469	1602138.1519	SEC
4001	1695768.6836	1602085.1306	SEC
4002	1698399.0902	1602031.2061	SEC
4003	1701029.8599	1601997.6971	SEC
4004	1698336.4917	1599424.1873	SEC
4005	1698485.1635	1604623.4442	SEC
4006	1693065.3802	1599496.0659	SEC
4007	1693216.7660	1604781.8040	SEC
4008	1693109.6930	1602107.9320	BM 11
4009	1693098.9422	1602171.1219	MKEC CP
4010	1693691.3150	1602069.7900	BM 10
4011	1693720.9000	1602211.8700	NAIL
4012	1693725.8620	1602224.6710	NAIL
4013	1693816.2890	1602207.6980	NAIL
4014	1694266.7653	1602045.5488	BM 9
4015	1694757.3520	1602049.3650	BM 8
4016	1695506.0400	1602012.7070	BM 7
4017	1695873.7599	1602052.0495	NAIL
4018	1696396.5700	1602022.2400	MKEC CP
4019	1696755.8700	1602027.3800	NAIL
4020	1697092.2769	1602024.4955	NAIL
4021	1697081.2860	1602000.8560	BM 5
4022	1697606.9750	1602004.0490	MKEC CP
4023	1697612.0830	1601989.2050	BM 4
4024	1697804.2499	1602022.8795	NAIL
4025	1698176.3240	1602112.8520	BM 3
4026	1698379.4300	1602079.4700	PKN & WASHER
4027	1699029.1100	1602041.3300	NAIL
4028	1699581.6100	1601981.2000	MKEC CP
4029	1698456.5340	1601553.0560	BM 2
4030	1698476.6200	1603732.5700	PKN & WASHER

CONTROL POINTS TABLE			
POINT NUMBER	NORTHING	EASTING	DESCRIPTION
4031	1698433.9099	1603731.4795	PKN & WASHER
4032	1698424.2993	1603835.7895	NAIL
4033	1696993.5684	1599757.8898	NAIL
4034	1697027.7825	1600088.8195	NAIL
4035	1697091.1060	1600139.0040	NAIL
4036	1697045.3550	1600549.2290	NAIL
4037	1693211.8419	1602606.5655	BMAN
4038	1693100.7690	1603043.9770	BM
4039	1693186.2334	1603261.5171	NAIL
4040	1693187.9630	1603327.9360	NAIL
4041	1694321.6700	1602082.5800	MKEC CP
4042	1695570.1806	1602039.2165	MKEC CP
4043	1696385.5380	1601995.9170	BM 6

PLOTED: Thursday, February 16, 2012 @ 12:38PM

J:\Civil\10265\DWG\Control-Bubble\10265-SWS-Bubble4

**STORM SEWER
BUBBLE
MAP**
SHEET TITLE
MKEC PROJ #10265
PROJECT NUMBER

DESIGN BY: JRA
DRAWN BY: WNU
CHECKED BY: JRA

ISSUED: February 2012
REVISED:

SHEET NO.
55 of 231