



STREET IMPROVEMENTS FOR
135th Street West
from 13th Street to 21st Street North

**REINFORCED
CONCRETE
VALLEY GUTTER
DETAILS**

SHEET TITLE
MKEC PROJ #10265
PROJECT NUMBER

DESIGN BY _____

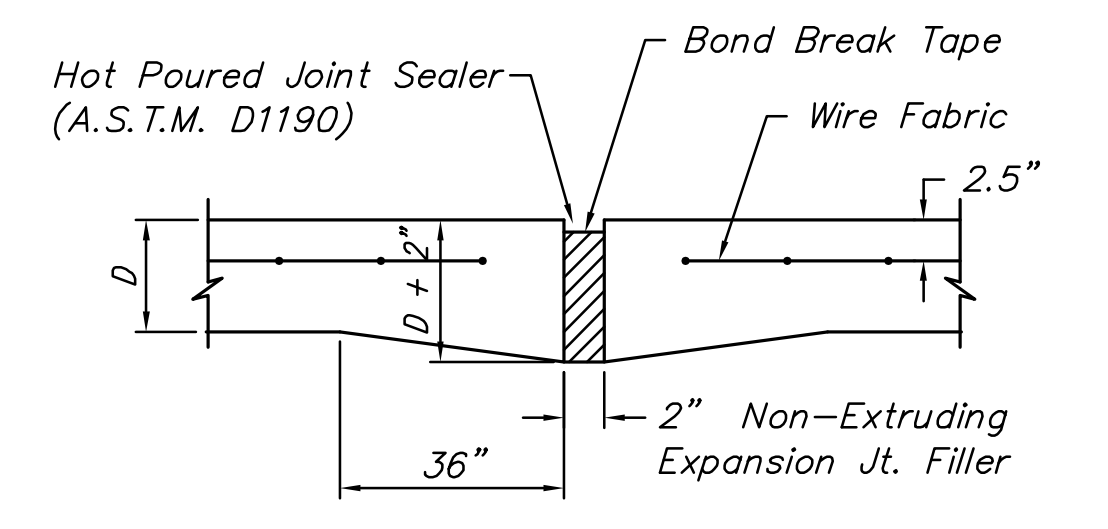
DRAWN BY _____

CHECKED BY _____

ISSUED
February 2012

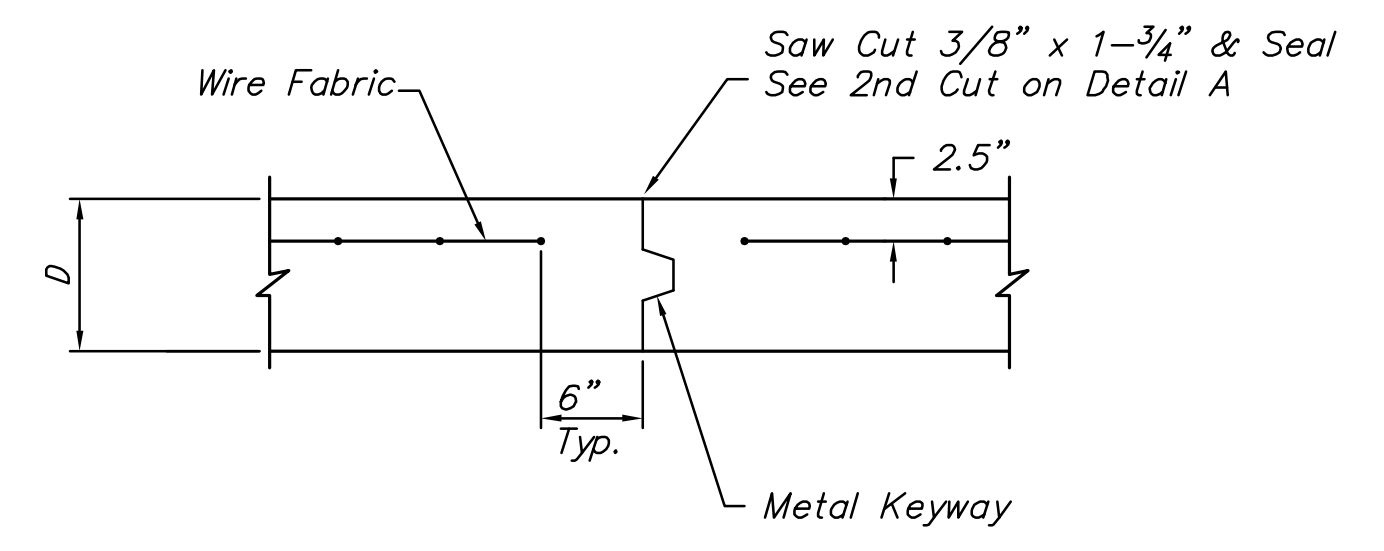
REVISED _____

SHEET NO.

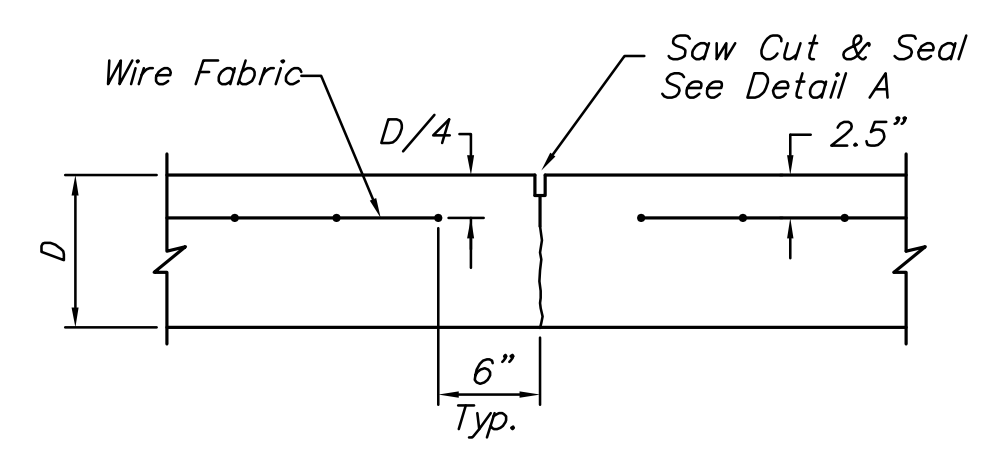


EXPANSION JOINT

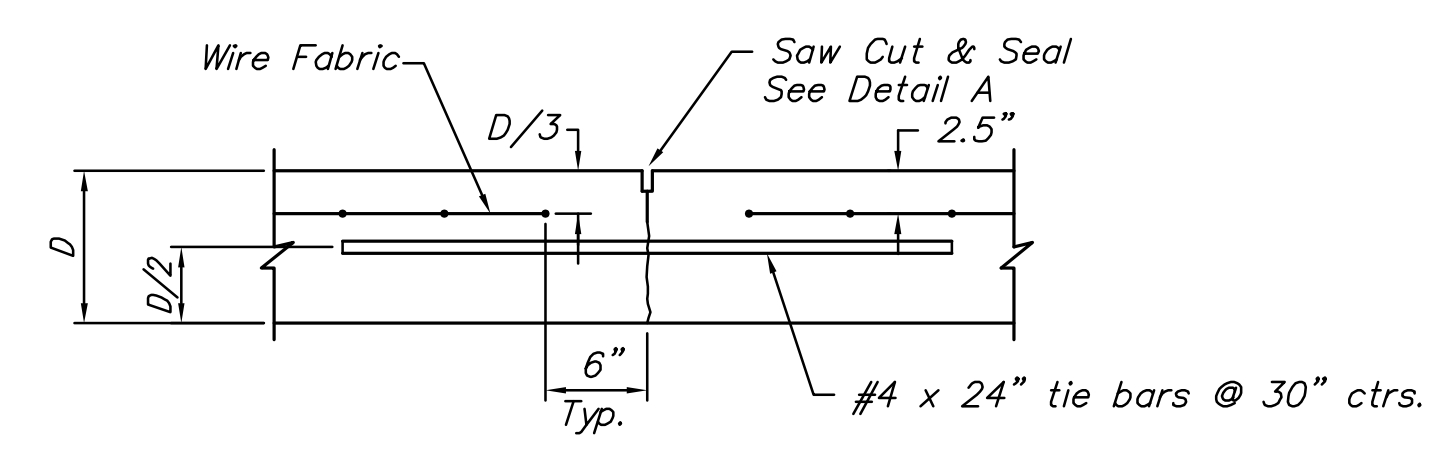
NOTE: Extra Thickness to be Subsidiary to Price of Square Yards Pavement



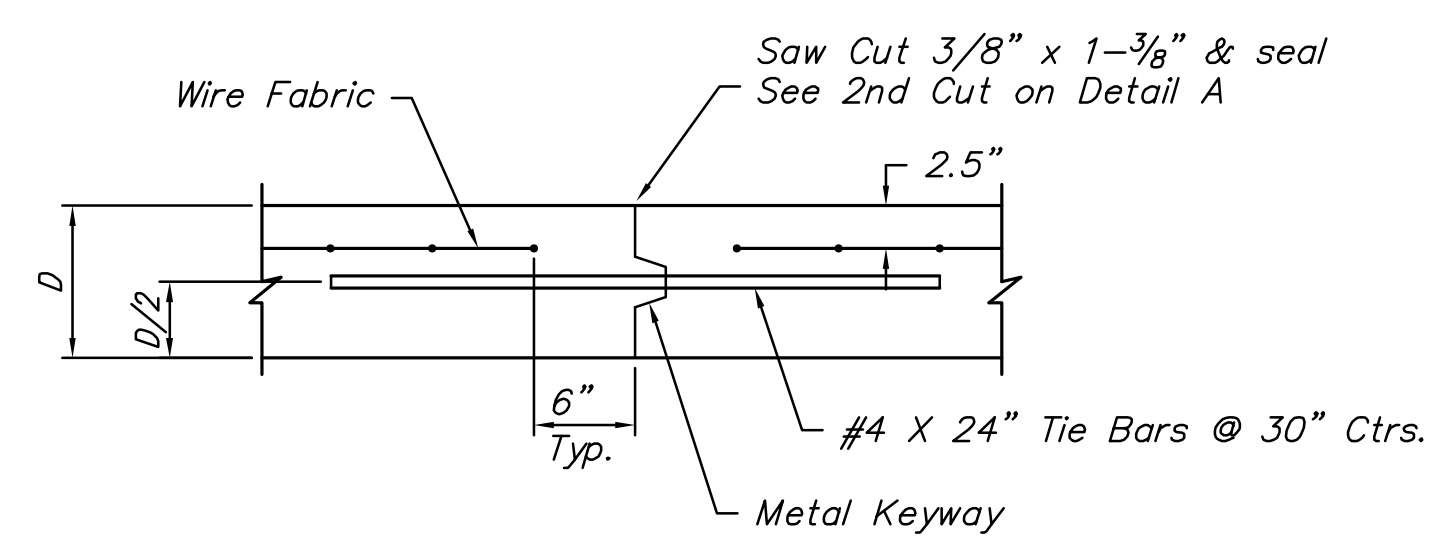
OPTIONAL CONTRACTION JOINT



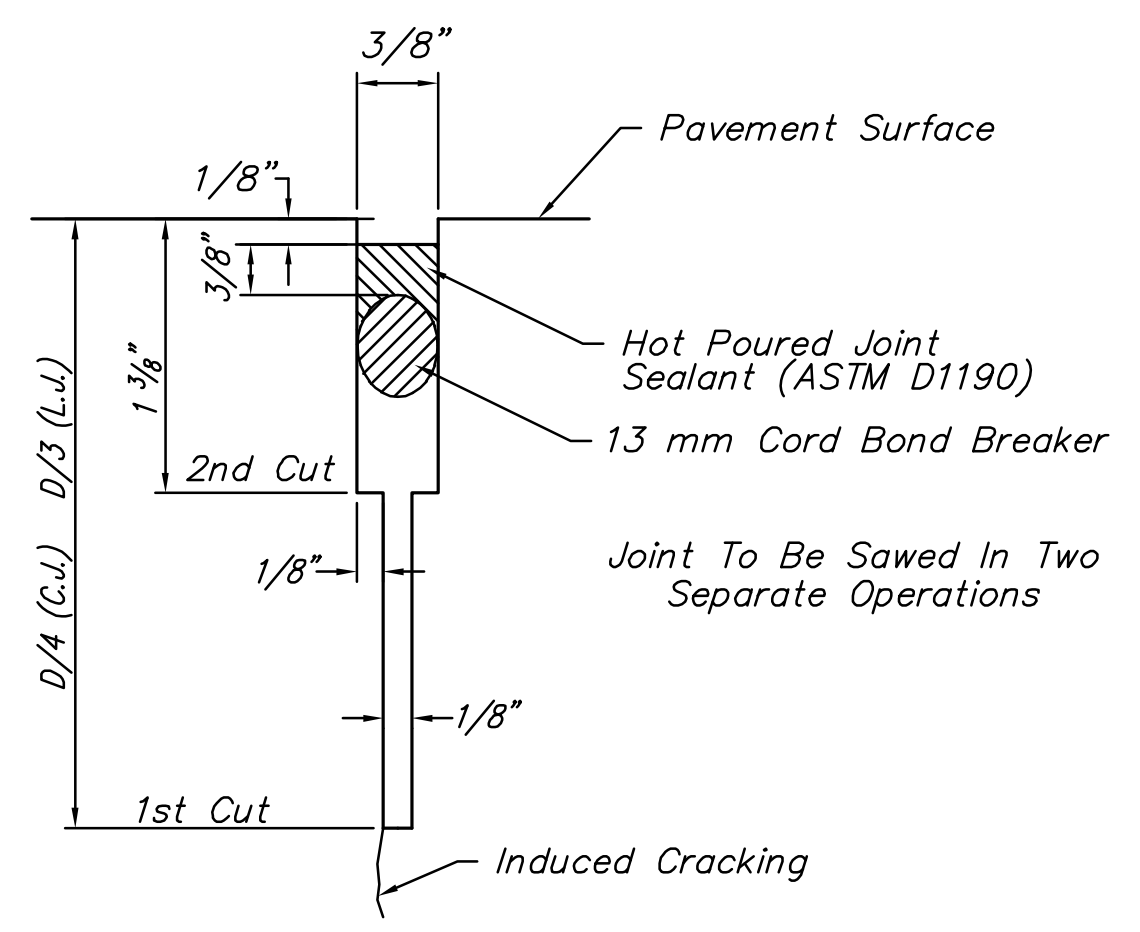
CONTRACTION JOINT DETAIL (C.J.)



LONGITUDINAL JOINT DETAIL (L.J.)

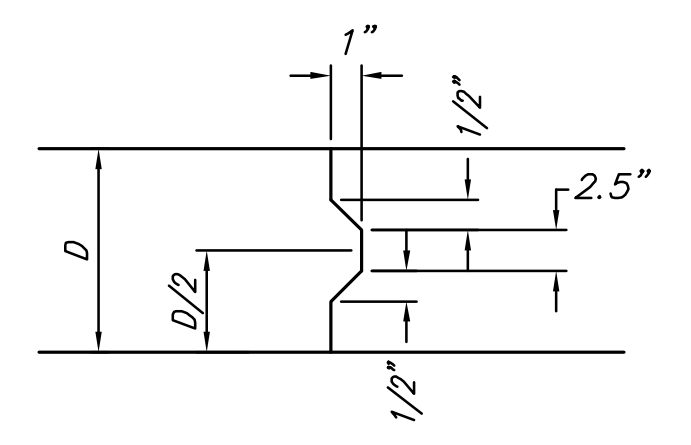


OPTIONAL LONGITUDINAL JOINT DETAIL (L.J.)

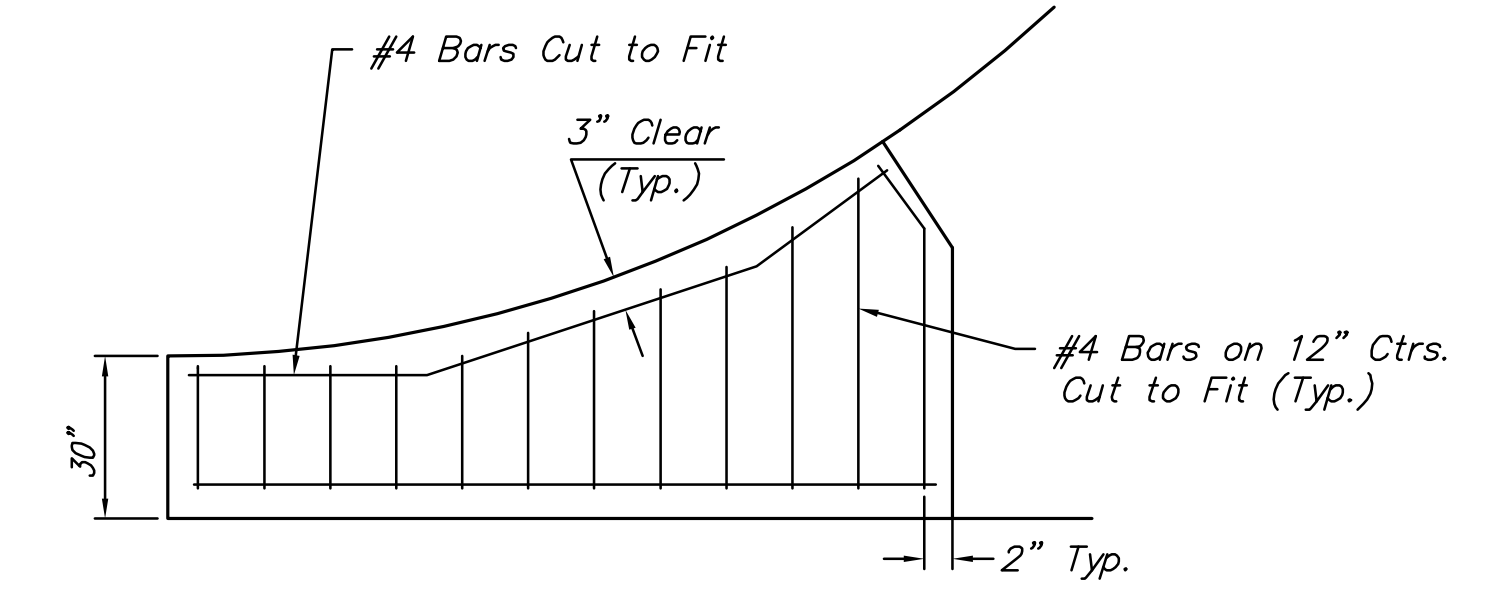


SAW JOINT DETAIL

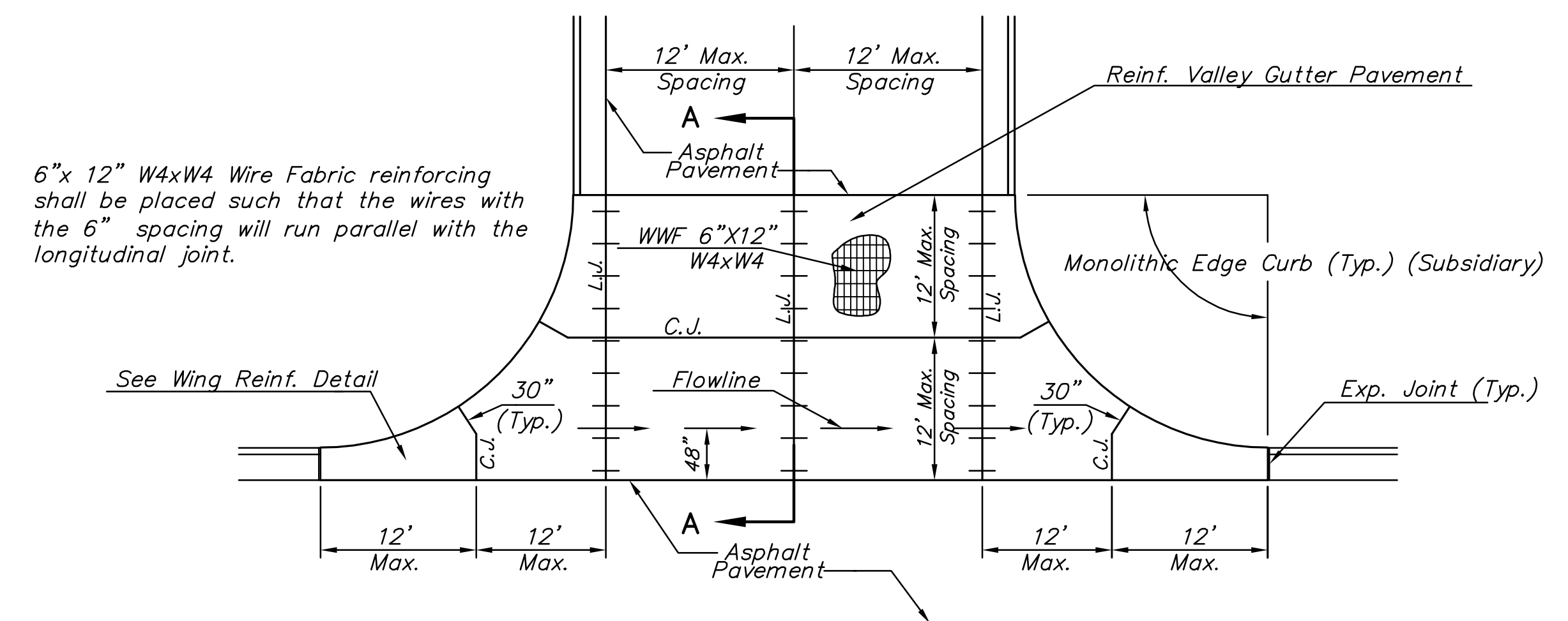
D = 8"



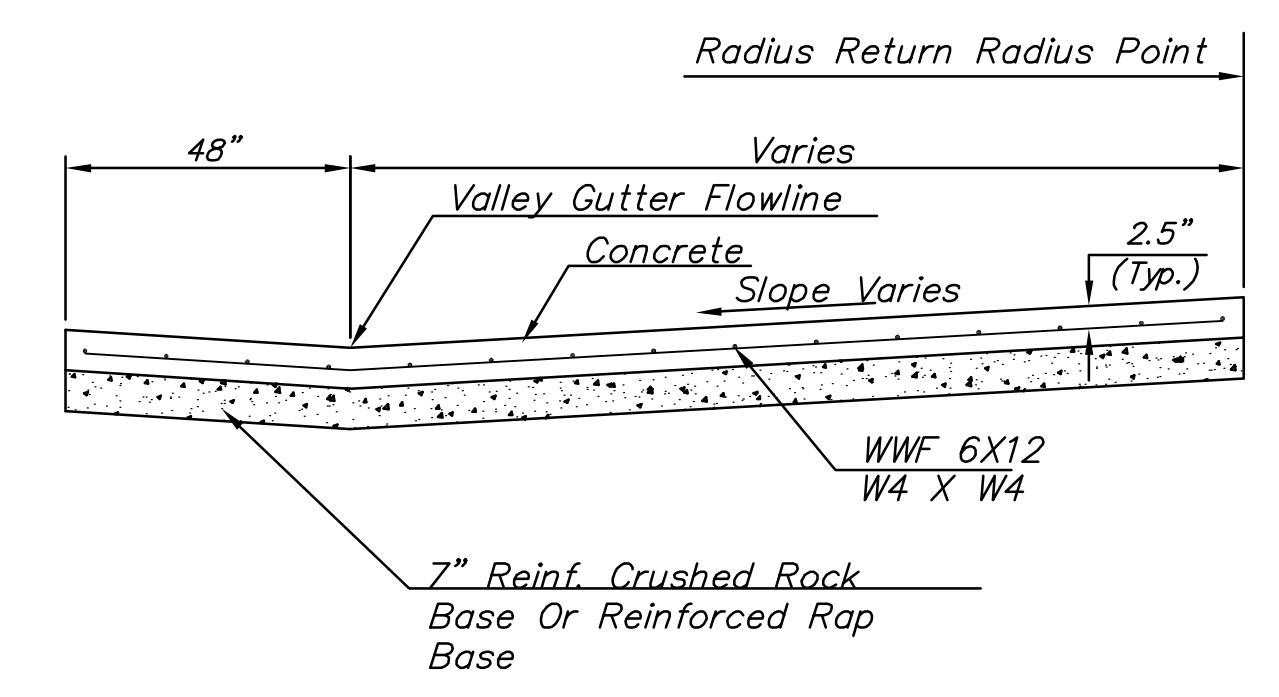
KEYWAY DETAIL



WING REINFORCING DETAIL



PLAN



SECTION A-A

REINFORCED VALLEY GUTTER DETAIL

PLOTTED: Thursday, February 16, 2012 @ 11:12AM

J:\Civil\10265\DWG\Details\VGDTL1