

**STREET IMPROVEMENTS FOR
135th Street West**
from 13th Street to 21st Street North

**RCB
MISC.
DETAILS**

SHEET TITLE
MKEC PROJ #10265
PROJECT NUMBER

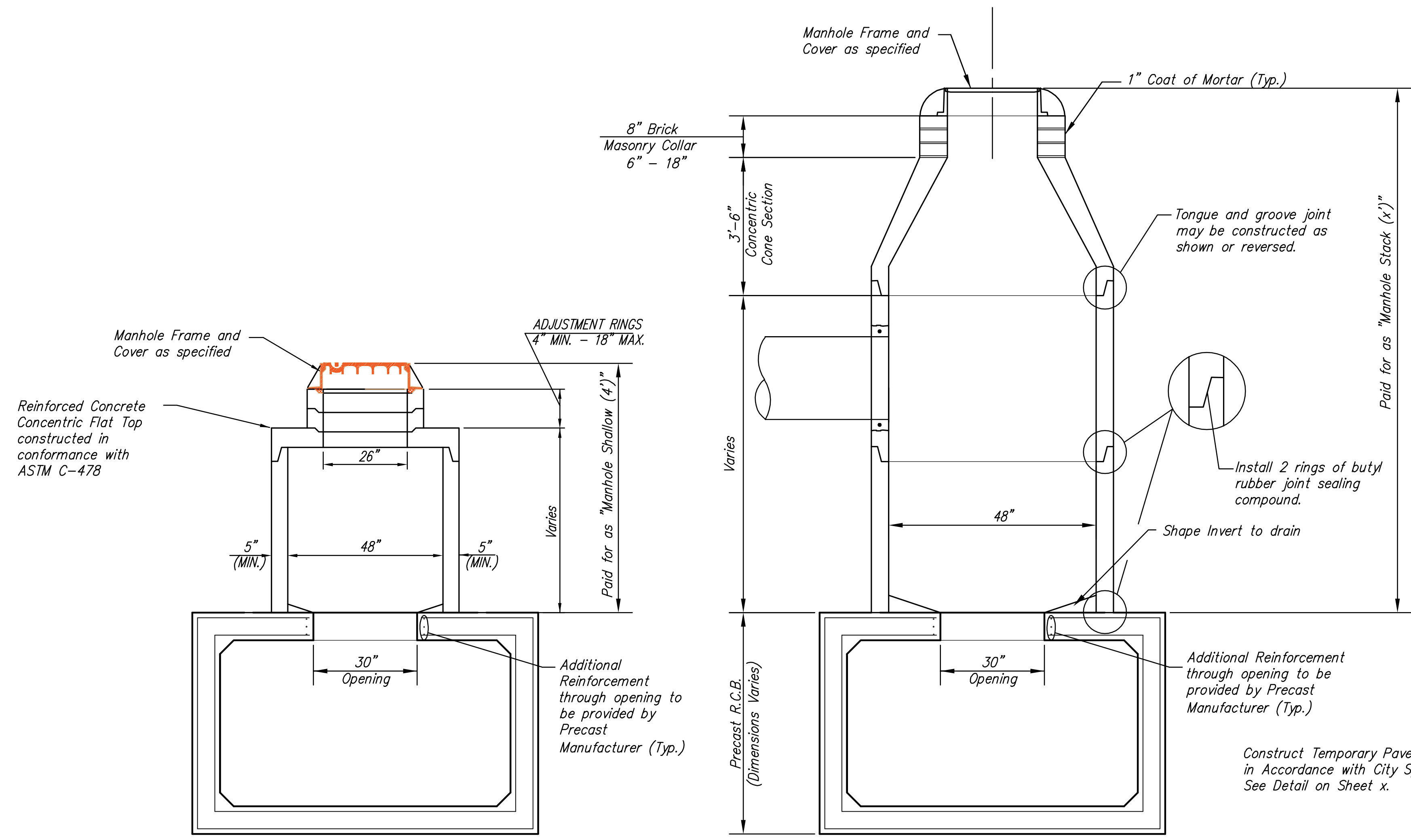
MKEC
DESIGN BY
DMU
DRAWN BY
JRA
CHECKED BY

ISSUED
February 2012
REVISED

SHEET NO.
81 of 231

GENERAL NOTES

1. All Pre-Cast Concrete Manhole Stacks shall conform to the City of Wichita's Standard Specifications and the General Notes on the Standard Pre-Cast Manhole detail.
2. All Shallow Stacks shall have 4'-0" inside diameter and will not receive Storm Sewer pipes.

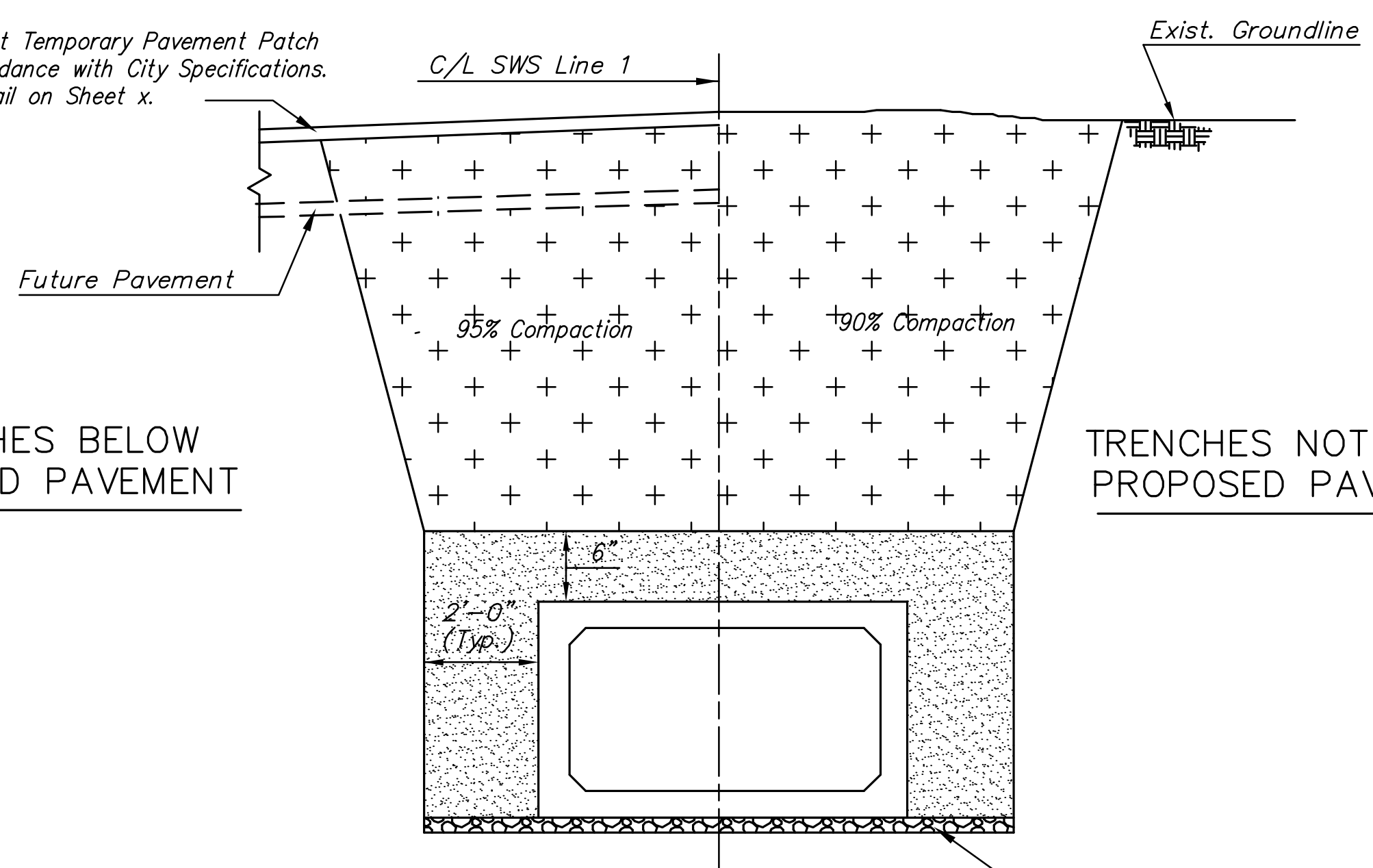


SHALLOW MANHOLE STACK

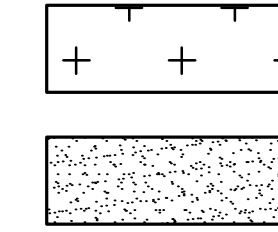
MANHOLE STACK DETAIL

**TRENCHES BELOW
PROPOSED PAVEMENT**

**TRENCHES NOT BELOW
PROPOSED PAVEMENT**

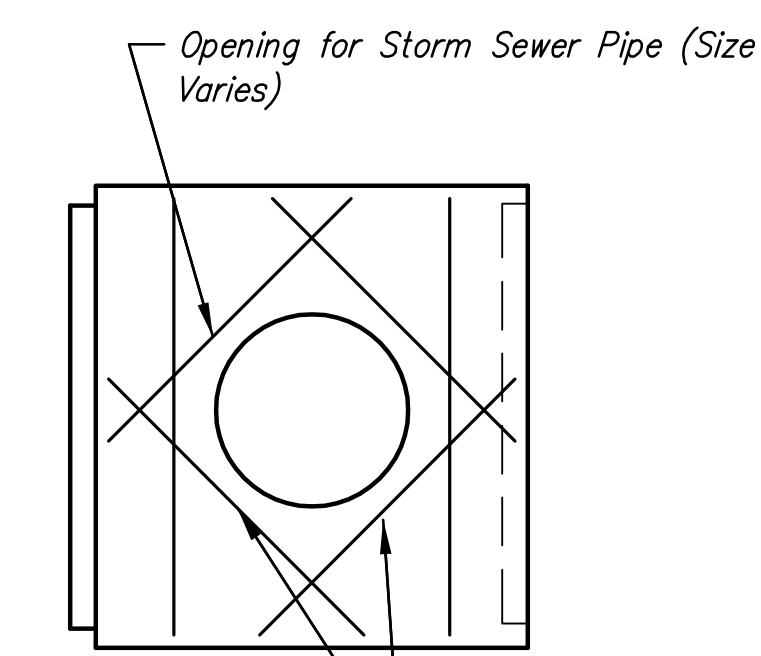


Bedding material shall be required under the box in accordance with the dimensions shown in the details. Bedding material shall consist of 6" thickness of crushed rock conforming to ASTM C-33, Gradation No. 67, and shall meet the requirements for Portland Cement Concrete Pavement Course Aggregate, Section 406.2 of the City of Wichita Standard Specifications. Bedding material shall be subsidiary to RCB Storm Sewer Items and shall include all necessary excavation.



RCB STORM SEWER TRENCH TYPICAL SECTION

See Sheet x for additional details pertaining to Precast Reinforced Concrete Boxes.



**PIPE OPENING IN
PRE-CAST RCB DETAIL**