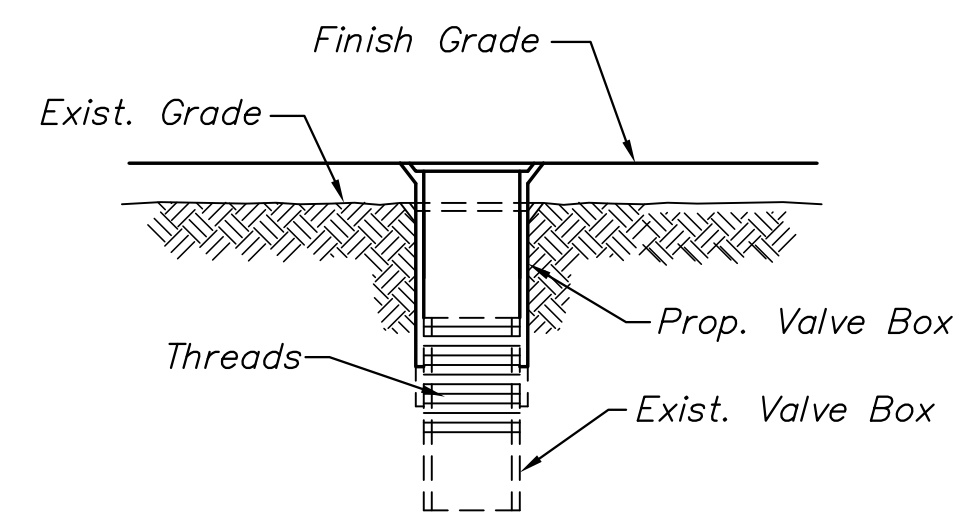


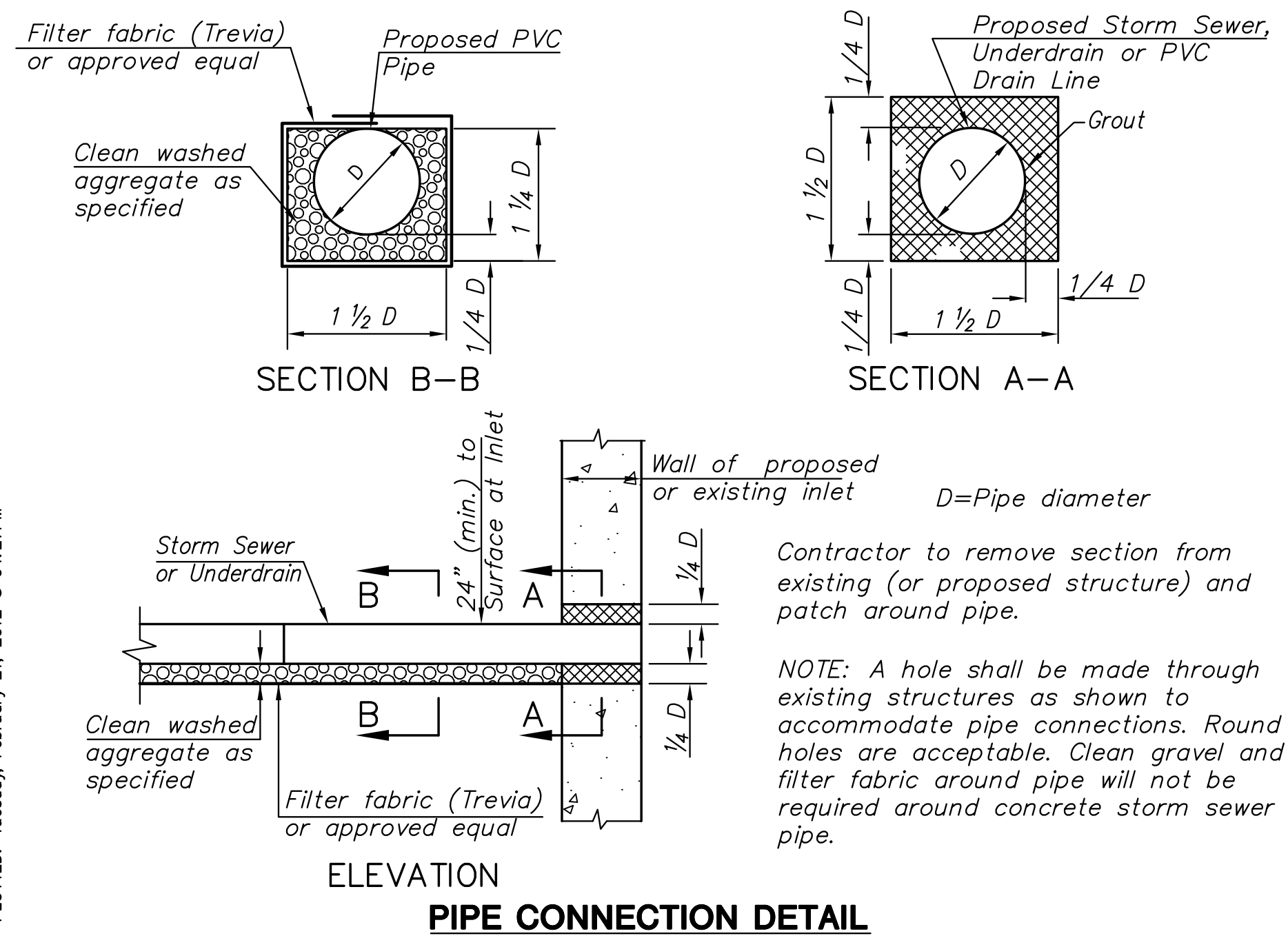
**TYPICAL UTILITY BOX-OUT DETAILS**

Note: Contractor shall construct box-outs around all surface utility fixtures, as shown, when fixtures fall on or near concrete joints, or as directed by the Engineer. All other fixtures shall have an isolation joint or bond breaker between them and concrete pavement. Cost shall be subsidiary.

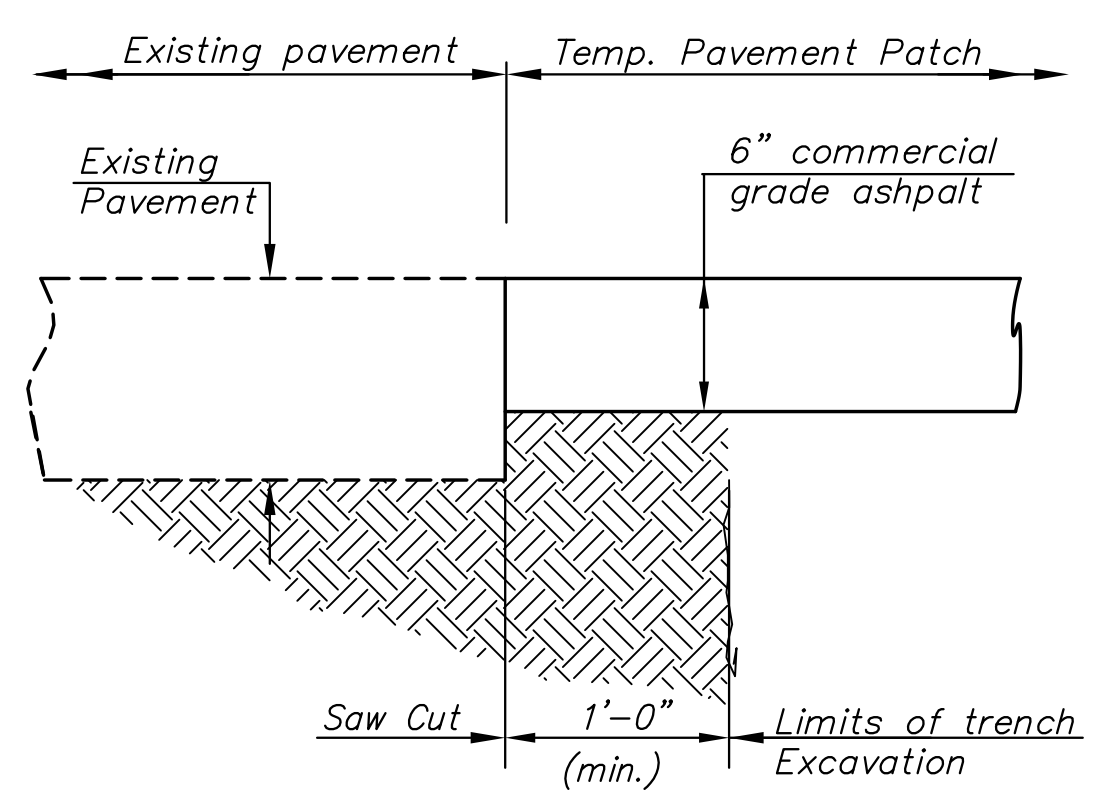


**WATER VALVE BOX ADJUSTMENT DETAIL**

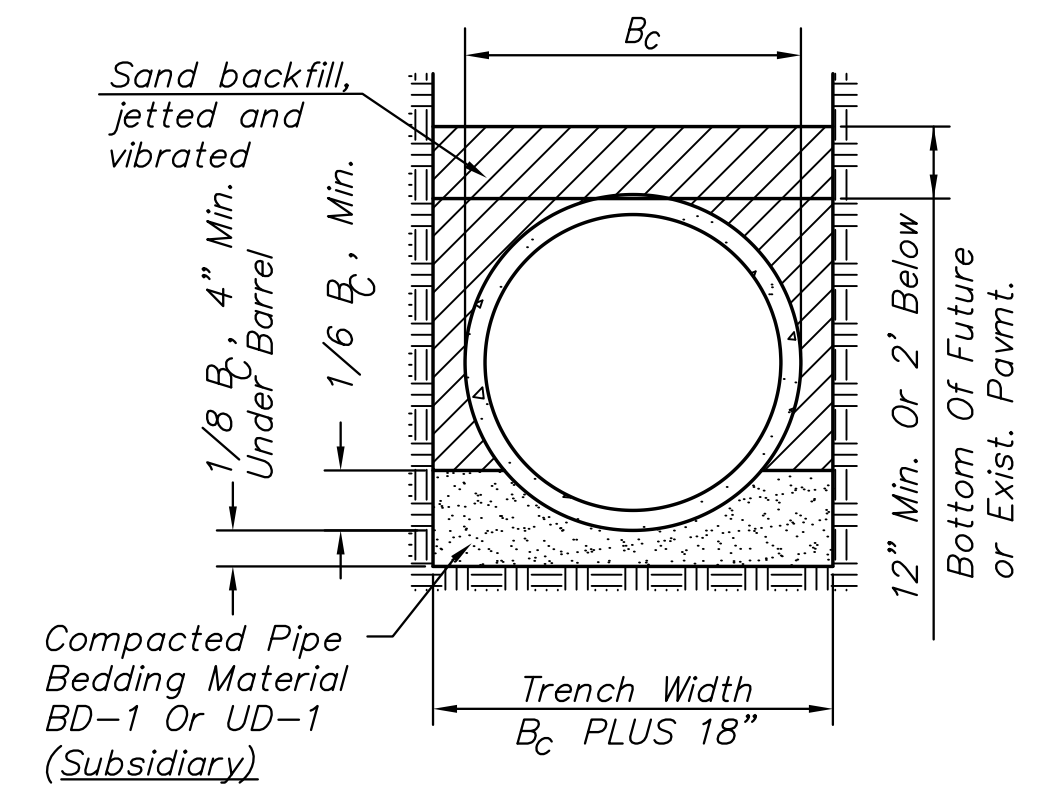
Valve Adjustment Shall Be Paid As "Valve Adjustment".



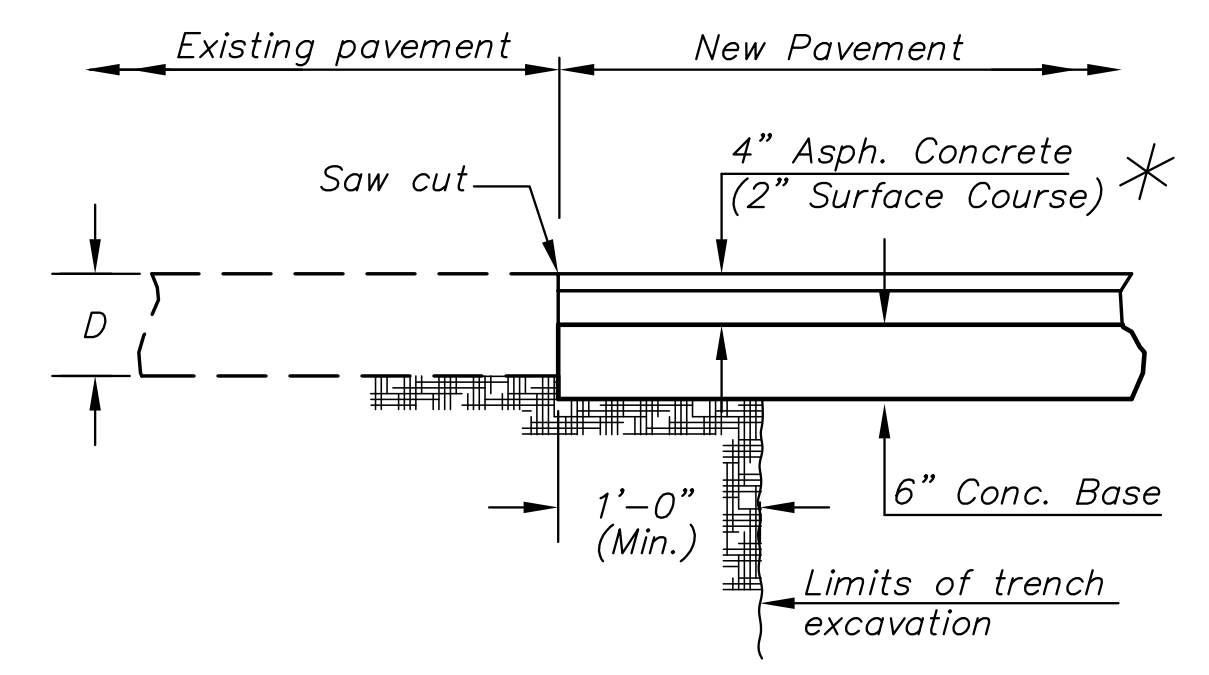
**PIPE CONNECTION DETAIL**



**TEMPORARY UTILITY PAVEMENT PATCH**

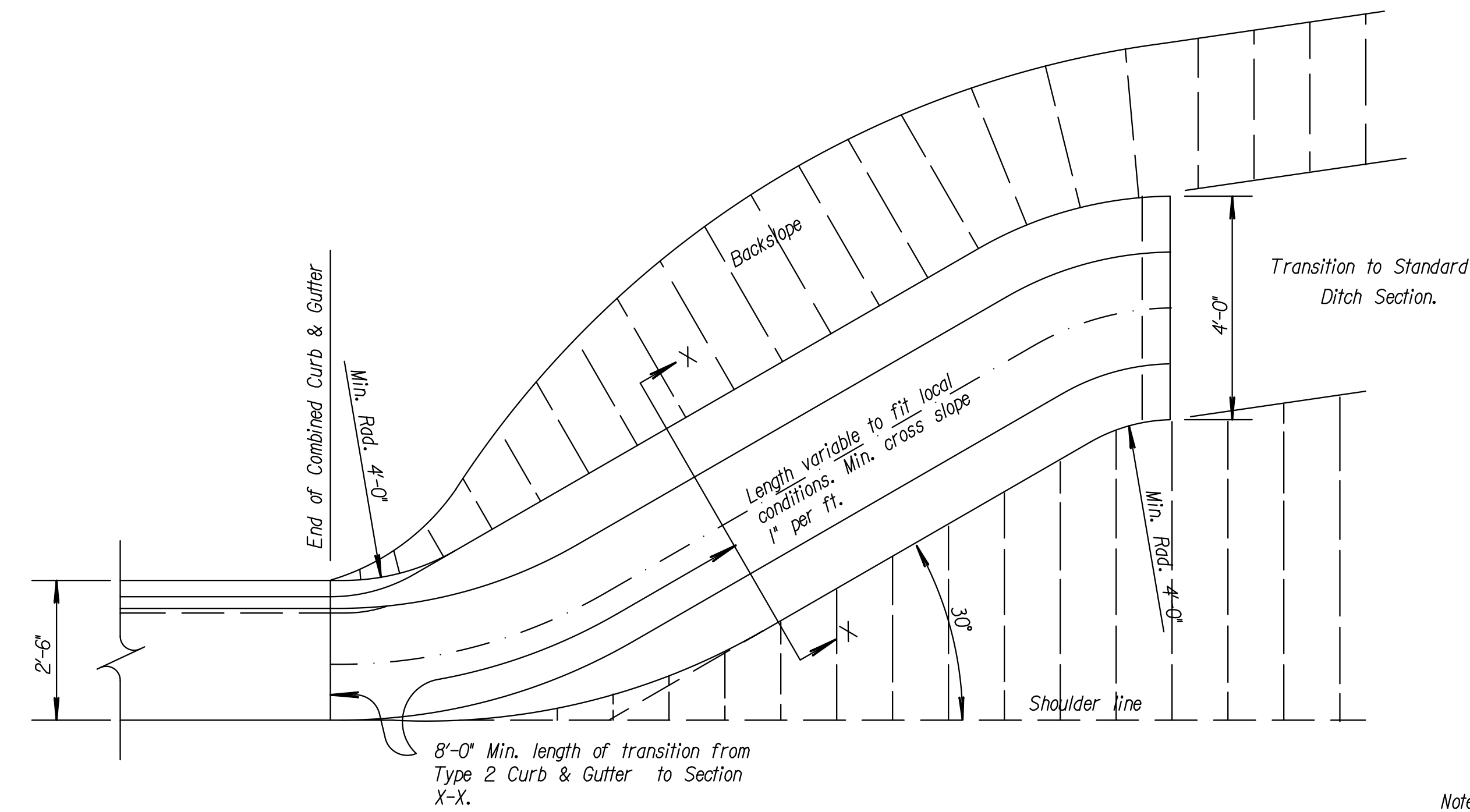


**STORM SEWER TRENCH DETAIL**

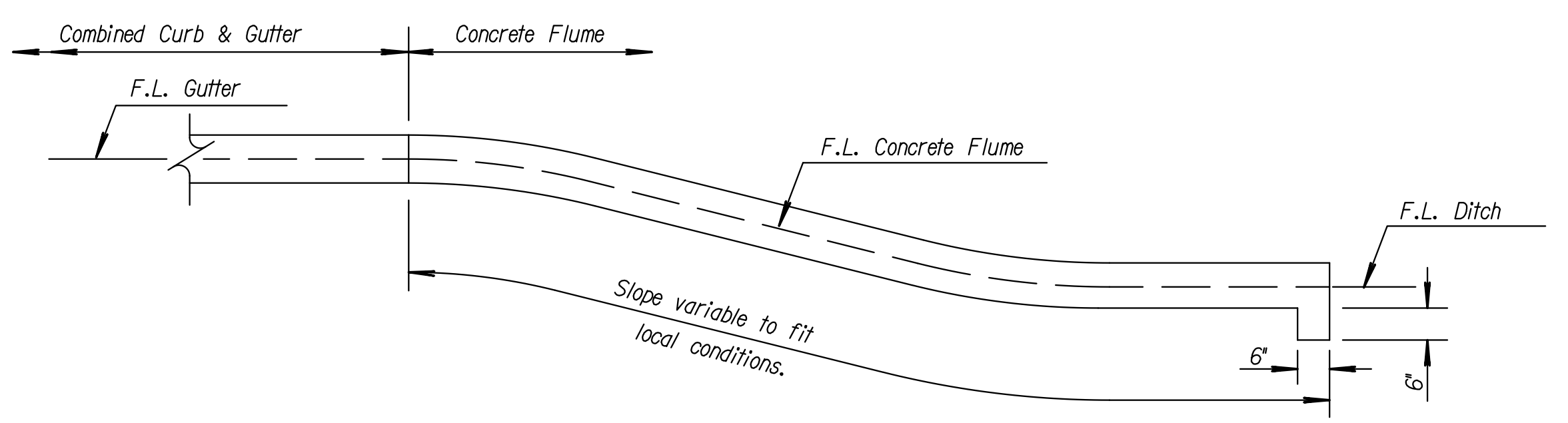


**PERMANENT PAVEMENT PATCH DETAIL**

\* If existing pavement is concrete, substitute eight inches of concrete pavement for pavement shown here. If existing pavement surface is brick, re-use the brick pavers in place of the 4" asphalt surface shown here. See brick paver installation details.



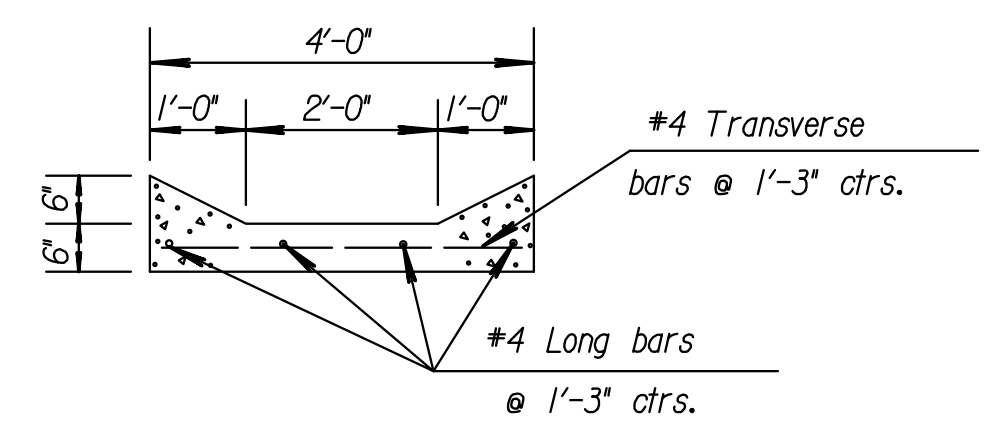
**TYPICAL PLAN**



**TYPICAL ELEVATION**

**CONCRETE FLUME**

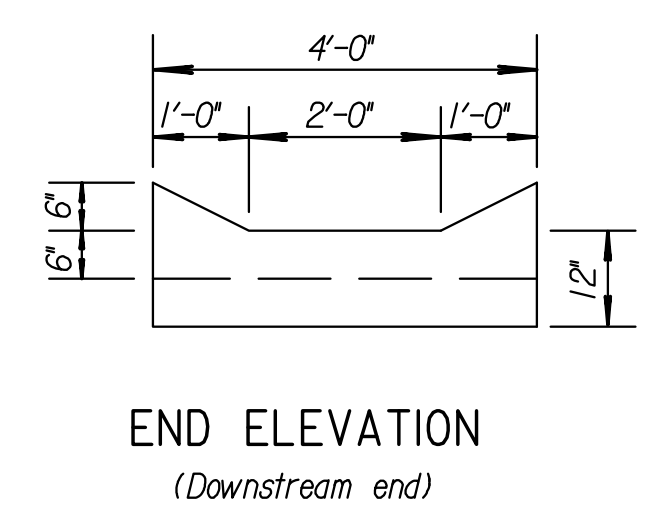
CONCRETE FLUME SUMMARY		
STATION	SIDE	LIN. FT.
135th St. W.		
49+54.72	Lt.	16.6
49+54.72	Rt.	16.6
102+25.48	Lt.	21.2
102+25.48	Rt.	21.2
21st St. N.		
43+05.78	Rt.	26.1
TOTAL		101.7



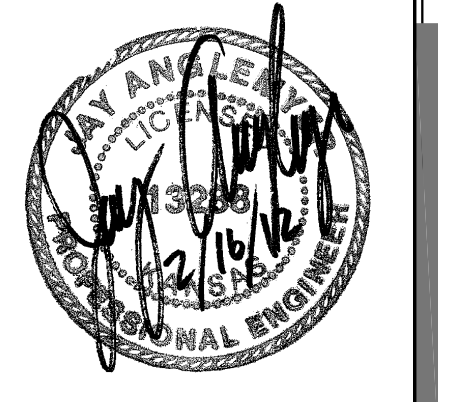
**SECTION X-X**

Note: The entire area of the Concrete Flume below the curbs, to be poured and struck off with a uniform thickness of 6".

Reinforcing steel to be deformed #4 bars.



**END ELEVATION**  
(Downstream end)



**STREET IMPROVEMENTS FOR**  
**135th Street West**  
from 13th Street to 21st Street North

**MISC. DETAILS**  
SHEET TITLE  
MKEC PROJ #10265  
PROJECT NUMBER

JRA  
DESIGN BY  
JSB  
DRAWN BY  
JRA  
CHECKED BY

ISSUED  
February 2012  
REVISED

SHEET NO.  
**95 of 231**

PLOTED: Tuesday, February 21, 2012 @ 04:27PM

J:\Civil\10265\DWG\Details\10265 Misc Dtl