

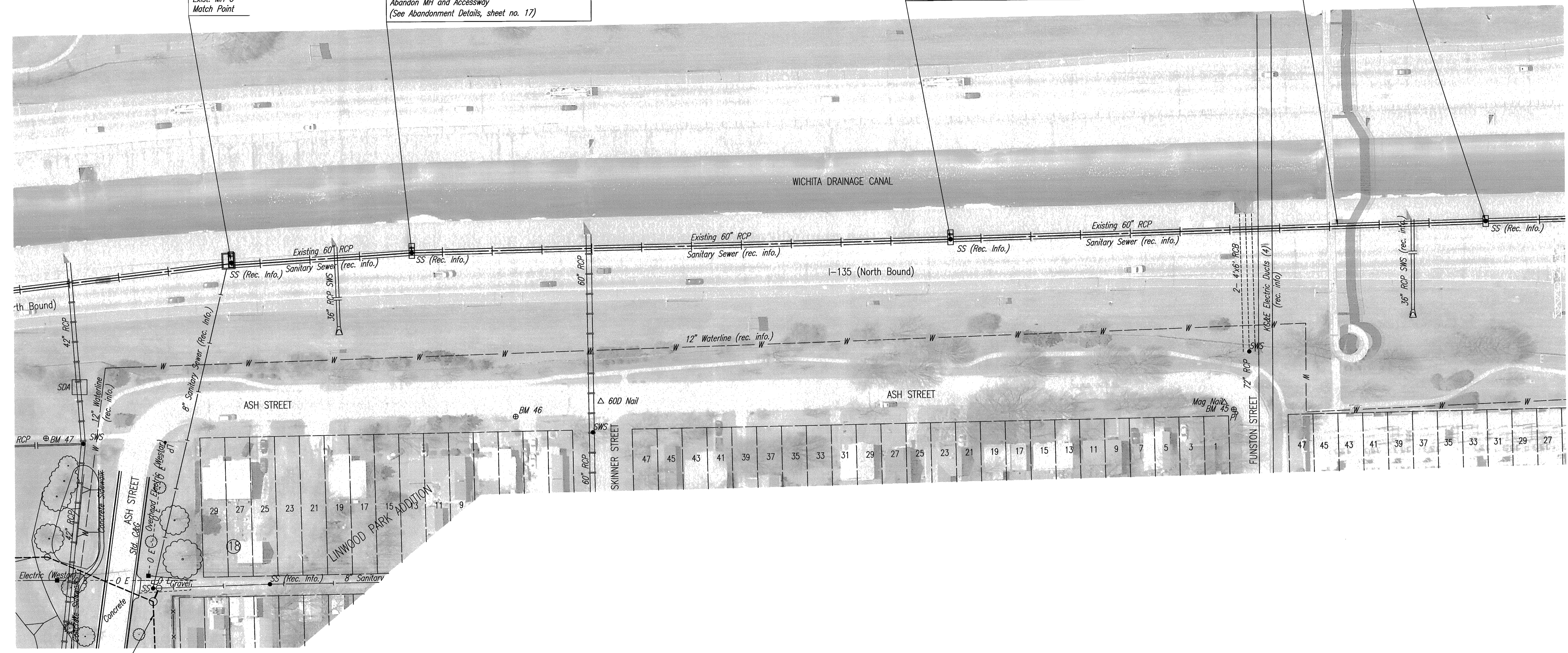
Sta. 49+18.8
 Exist. MH J (See Typical MH Section, sheet 12)
 Seal 60" opening (N&S)
 Abandon approx. 533.1 L.F. Existing 60" RCP Pipe (N)
 Abandon MH and Accessway
 (See Abandonment Details, sheet no. 17)

Sta. 43+80.1
 Exist. MH I (See Typical MH Section, sheet 12)
 Seal 60" opening (N&S)
 Abandon approx. 538.7 L.F. Existing 60" RCP Pipe (N)
 Abandon MH and Accessway
 (See Abandonment Details, sheet no. 17)

Sta. 38+38.2
 Exist. MH H (See Typical MH Section, sheet 12)
 Seal 60" opening (N&S)
 Abandon approx. 541.9 L.F. Existing 60" RCP Pipe (N)
 Abandon MH and Accessway
 (See Abandonment Details, sheet no. 17)

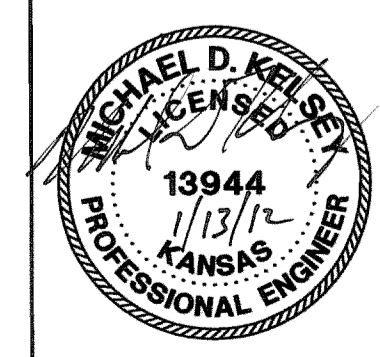
Sta. 36+54.7
 Exist. MH G
 Match Point

CAUTION !!!
 Pedestrian Bridge
 Overhead



PHASE 2 SANITARY SEWER
 (by others)

Saved 01-13-2012 9:55:13 AM by CSL
 Plot Scale: 1:50 01-13-2012 9:55:48 AM by CALVIN S. LANK
 C:\2007\07600\001\Phase 3\07600-001-006-anno.plotted



No.	Revision	By	Date

RELOCATION OF SANITARY SEWER NO. 23
 PHASE 3: ABANDONMENT PLANS

SANITARY SEWER ABANDONMENT PLAN

JAMES L. ARMOUR, P.E. - CITY ENGINEER
 CITY OF WICHITA PROJECT NO. 468-84375b

PROFESSIONAL ENGINEERING CONSULTANTS, P.A.
 303 SOUTH TOPEKA WICHITA, KS 67202
 316-262-2691 www.pec1.com

Designed by	MDK, SAD	Job No.	35-07600-001
Drawn by	CSL, JAN	Date	SEPTEMBER 2011

Sht. 6 of 20