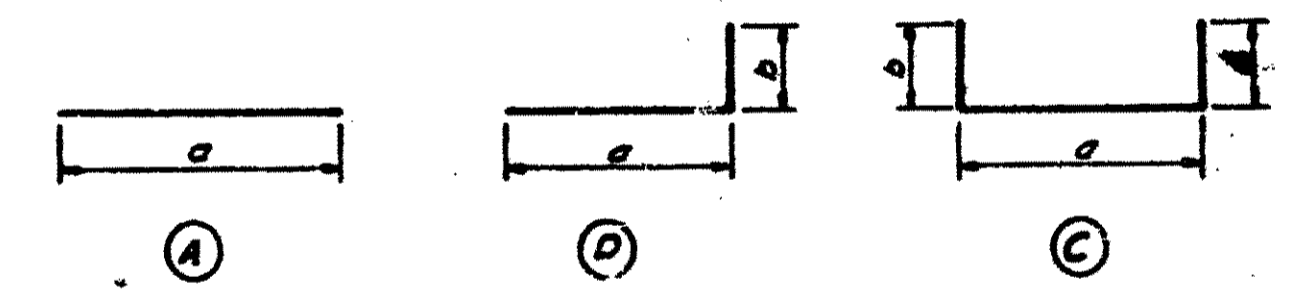
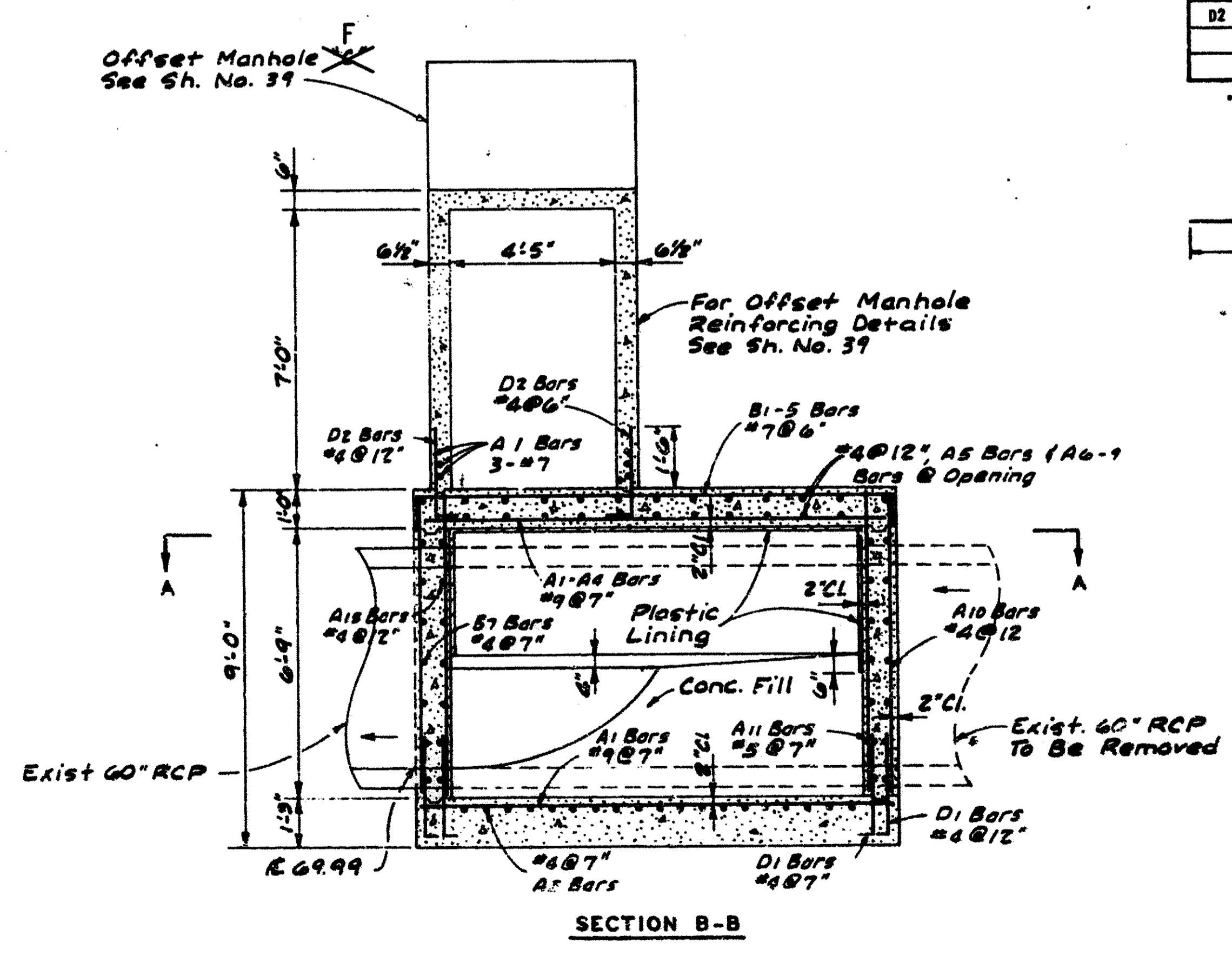
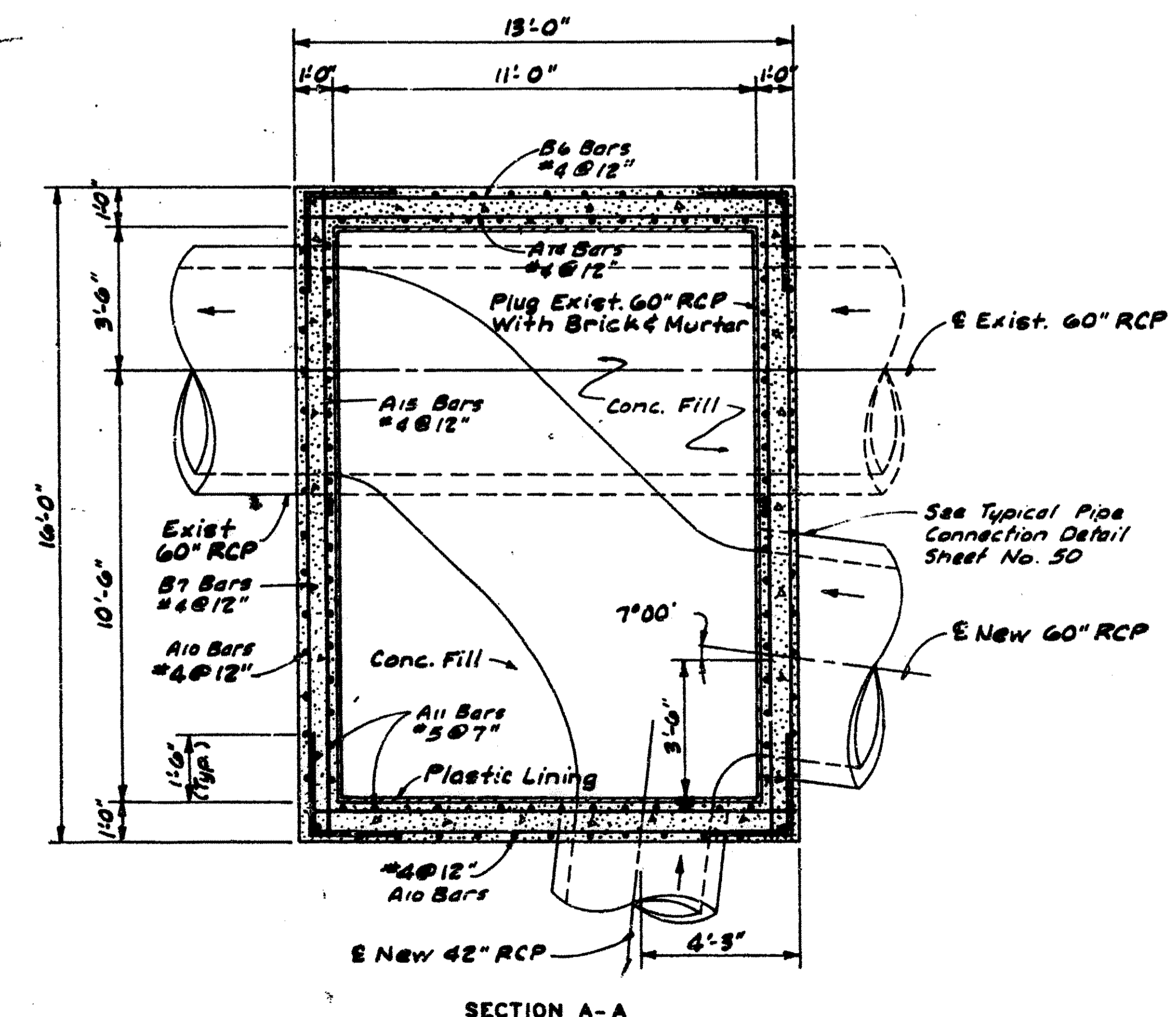


LETTER PREFIX OF BAR MARK DENOTES SHAPE. SEE BENDING DIAGRAM.

MARK	DIMENSIONS			NO.	SIZE	LENGTH
	a	b	c			
A1	12'-9"			41	#8	12'-9"
A2	8'-6"			2	#9	8'-6"
A3	7'-11"			2	#9	7'-11"
A4	7'-7"			3	#9	7'-7"
A5	15'-9"			35	#4	15'-9"
A6	4'-5"			4	#4	4'-5"
A7	3'-10"			4	#4	3'-10"
A8	8'-5"			4	#4	8'-5"
A9	7'-10"			4	#4	7'-10"
A10	7'-7"			58	#4	7'-7"
A11	7'-7"			86	#5	7'-7"
A12	7'-7"			4	#6	7'-7"
A13	5'-9"			16	#6	5'-9"
A14	12'-9"			18	#4	12'-9"
A15	15'-9"			14	#4	15'-9"
A16	16'-0"			6	#7	16'-0"
B1	12'-8"	0'-8"	0'-8"	22	#7	14'-0"
B2	8'-6"	0'-8"	0'-8"	2	#7	9'-10"
B3	8'-0"	0'-8"	0'-8"	2	#7	9'-4"
B4	7'-8"	0'-8"	0'-8"	2	#7	9'-0"
B5	7'-6"	0'-8"	0'-8"	2	#7	8'-10"
B6	12'-8"	2'-4"	2'-4"	14	#4	17'-4"
B7	15'-8"	2'-4"	2'-4"	14	#4	20'-4"
D1	2'-3"	0'-3"		144	#4	2'-6"
D2	2'-6"	0'-6"		54	#4	3'-0"



BENDING DIAGRAMS
DIMENSIONS ARE OUT TO OUT OF BARS

INVERT OF MANHOLE TO BE SHAPED AS SHOWN IN VARIOUS "EXAMPLES" WITH UNREINFORCED CLASS "A" CONCRETE. (SUBSIDIARY ITEM).

CLASS "A" CONCRETE TO BE USED THROUGHOUT, EXCEPT WHERE NOTED OTHERWISE. BEVEL ALL EXPOSED EDGES WITH A 3:4" TRIANGULAR MOLDING.

NO DEDUCTIONS IN CONCRETE QUANTITIES SHALL BE MADE FOR OPENINGS.

IN GENERAL, PIPES WILL ENTER AND LEAVE THE MANHOLE AT VARIOUS POSITIONS. WHERE POSSIBLE BEND BARS AROUND PIPES.

ALL NEW RCP CONNECTIONS TO CONCRETE MANHOLES SHALL BE MADE WITH A STEEL BELL RING FITTING. SEE DETAIL SHEET 50

OFFSET MANHOLE
Scale: 1/8" = 1'-0"

FROM PROJECT: 35W-87 I-35W-1(33) 46 UTILITY PLANS, 1973, SHEET 55

Saved 01-13-2012 11:24:36 AM by CSL
 Plot Scale: 1:1 01-13-2012 11:25:28 AM
 C:\2007\0800\01\Phase 3\35W-87-1(33)-46-Offset.dwg

No.	Revision	By	Date
RELOCATION OF SANITARY SEWER NO. 23 PHASE 3: ABANDONMENT PLANS CONCRETE MANHOLE BOX FOR OFFSET MANHOLE F JAMES L. ARMOUR, P.E. - CITY ENGINEER CITY OF WICHITA PROJECT NO. 468-84375b			
		PROFESSIONAL ENGINEERING CONSULTANTS, P.A. 303 SOUTH TOPEKA WICHITA, KS 67202 316-262-2691 www.pec1.com	
Designed by	MDK, SAD	Job No.	35-07600-001
Drawn by	CSL, JAN	Date	SEPTEMBER 2011
			Sht. 15 of 20