

BENCHMARKS & CONTROL POINTS

BM #101 - Chiseled "+" 11.8' West and 16.0' North of the Centerlines of Both Elmhurst & Idlewild.
Elev. = 1266.52 (NAVD 88)
N-10133.31 E-19566.62

BM #102 - Chiseled "+" 11.0' West and 17.0' North of the Centerlines of Both Meadowview & Idlewild.
Elev. = 1265.93 (NAVD 88)
N-10127.76 E-19316.73

BM #103 - Chiseled "+" 11.2' West and 16.0' South of the Centerlines of Both Brookhaven & Idlewild.
Elev. = 1265.34 (NAVD 88)
N-10121.35 E-19067.03

BM #104 - Railroad Spike in the East Face of the Light Pole on the West Side of Brookhaven between #5047 & #5043.
Elev. = 1270.85 (NAVD 88)

BM #105 - Chiseled "+" 8.0' East and 19.7' North of the Centerlines of Both Brookhaven & Oaklawn Drive.
Elev. = 1267.84 (NAVD 88)
N-11263.40 E-18772.59

BM #106 - Railroad Spike in the West Face of the Light Pole on the East Side of Brookhaven between #4954 & #4942.
Elev. = 1269.12 (NAVD 88)

BM #107 - Chiseled "+" in the Flowline of the Curb at the West End of the SW Curb Return of the Intersection of Brookhaven & Fairhaven.
Elev. = 1268.36 (NAVD 88)
N-12224.51 E-18407.71

BM #108 - Chiseled "+" in the Flowline of the Curb on the East Side of Meadowview between #5042 & #5046.
Elev. = 1268.20 (NAVD 88)
N-10785.99 E-19300.00

BM #109 - Chiseled "+" in the Flowline of the Curb at the Midway Point of the SE Curb Return of the Intersection of Oaklawn Drive & Meadowview.
Elev. = 1268.20 (NAVD 88)
N-11364.67 E-19015.04

BM #110 - Railroad Spike in the East Face of the Light Pole on the West Side of Meadowview between #4945 & #4931.
Elev. = 1270.20 (NAVD 88)

BM #111 - Chiseled "+" in the Flowline of the Curb ±5' West of the East end of SE Curb Return of the Intersection of Meadowview and Fairhaven.
Elev. = 1269.05 (NAVD 88)
N-12297.50 E-18703.77

BM #112 - Chiseled "□" at the Top of Curb on the East Side of Elmhurst, between #5044 & #5046.
Elev. = 1268.91 (NAVD 88)

BM #113 - Chiseled "□" at the Midway Point of the SW Curb Return of the Intersection of Elmhurst & Oaklawn Drive.
Elev. = 1268.91 (NAVD 88)

BM #114 - Chiseled "□" at the Midway Point of the SW Curb Return of the Intersection of Elmhurst & Fairhaven.
Elev. = 1269.53 (NAVD 88)

BM #116 - Mag Nail in the Centerline of the Asphalt Walk in Front of 3007 Fairhaven.
Elev. = 1268.19 (NAVD 88)
N-12123.70 E-18018.32

BM #117 - Chiseled "+" in the Valley Gutter 11.0' West and 18.7' North of the Intersection of Oaklawn Drive and Cedarvale.
Elev. = 1266.90 (NAVD 88)
N-10991.97 E-18329.86

BM #118 - Chiseled "□" on the Top of Curb at the West End of the SW Curb Return at 47th Street South & Cedarvale.
Elev. = 1270.26 (NAVD 88)

BM #119 - Chiseled "+" in the SW Corner of the Entrance to Pinaire Mobile Home Park at 5205 S Clifton, 24.0' West of the Centerline of Clifton, 19' South of entrance to park.
Elev. = 1267.61 (NAVD 88)
N-9855.45 E-19981.16

BM #124 - Chiseled "+" at NE Corner of intersection of Cedarvale and Idlewild. 5.7' East of CL Cedarvale, 14.7' North of CL Idlewild.
Elev. = 1264.05 (NAVD 88)
N-10108.34 E-18584.38

BM #125 - Magnail/washer on concrete walk near the PL between 5038 & 5034 Cedarvale (1.3' East of back of curb).
Elev. = 1267.69 (NAVD 88)
N-10653.25 E-18559.95

BM #126 - Magnail/washer in railroad tie, 3.4' West of curb and 10' South of entrance of 4933 Cedarvale.
Elev. = 1268.54 (NAVD 88)
N-11687.35 E-17962.06

BM #127 - Magnail/washer on asphalt walk in front of 5042 Brookhaven, ±5.5' North and 13' West of front door.
Elev. = 1269.48 (NAVD 88)
N-10780.00 E-19067.53

BM #128 - Magnail/washer on concrete walk near midpoint of house at 4935 Brookhaven, 2.5' West of back of curb on West side of street.
Elev. = 1268.55 (NAVD 88)
N-11735.85 E-18471.02

BM #129 - Magnail/washer on asphalt near midpoint of house at 4933 Elmhurst, ±8' West of CL Elmhurst.
Elev. = 1269.89 (NAVD 88)
N-11950.17 E-18937.16

BM #130 - Magnail/washer on asphalt, ±1' North and ±8' West of mailboxes for 5038 & 5040 Elmhurst.
Elev. = 1268.91 (NAVD 88)
N-10965.36 E-19505.12

BM #131 - Cross on concrete at NW corner of intersection of Hemlock & Idlewild, ±10.6' West and 16.0' North of CL intersection.
Elev. = 1267.17 (NAVD 88)
N-10138.84 E-19817.44

BM #132 - Magnail/washer in asphalt at SE corner of intersection of Tierra & Hemlock, ±9' East and 18' South of CL intersection.
Elev. = 1269.58 (NAVD 88)
N-11840.71 E-19797.15

BM #133 - Magnail/washer in asphalt at SW corner of intersection of Hemlock & South entrance of Hemlock Place, 11' South and 11' West of CL intersection.
Elev. = 1268.94 (NAVD 88)
N-11141.43 E-19793.37

BM #134 - Magnail/washer in asphalt at NW corner of intersection of Hemlock & North entrance of Hemlock Place, 37.4' North and 9.5' West of CL intersection.
Elev. = 1269.46 (NAVD 88)
N-11651.62 E-19782.93

BM #135 - Magnail/washer in asphalt in school parking lot, 8' South of CL Chestnut East and 25' East of CL Chestnut South, 10' NE of new fire hydrant.
Elev. = 1267.79 (NAVD 88)
N-12991.31 E-17943.25

BM #136 - Magnail/washer in concrete at SW corner of intersection of Chestnut & Locust, 25.8' West and 9.1' South of CL intersection.
Elev. = 1265.09 (NAVD 88)
N-12737.93 E-17898.66

BM #137 - Magnail/washer in concrete walk, 3.8' West of back of curb and 7' South of entrance of 4811 Cedarvale.
Elev. = 1267.12 (NAVD 88)
N-12388.41 E-17915.68

BM #138 - OBR (#4R w/big orange cap) ± CL of Jonquil South and 7' North of back of curb on north side of 47th Street South.
Elev. = 1268.40 (NAVD 88)
N-12620.62 E-18558.22

CP #1 - 3/4" Iron Pipe at the Southeast Corner of the West Half of the Northwest Quarter of Section 23, Twp. 28 South, Range 1 East.
N-10000.00 E-20000.00

CP #2 - 1/2" Iron Pipe at the Northeast Corner of the West Half of the Northwest Quarter of Section 23, Twp. 28 South, Range 1 East.
N-12621.93 E-19943.37

CP #4 - OBR (#4R w/big orange cap).
N-10089.52 E-18378.78

CP #100 - Magnail/washer at intersection of Clifton & Idlewild.
N-10119.46 E-19970.10

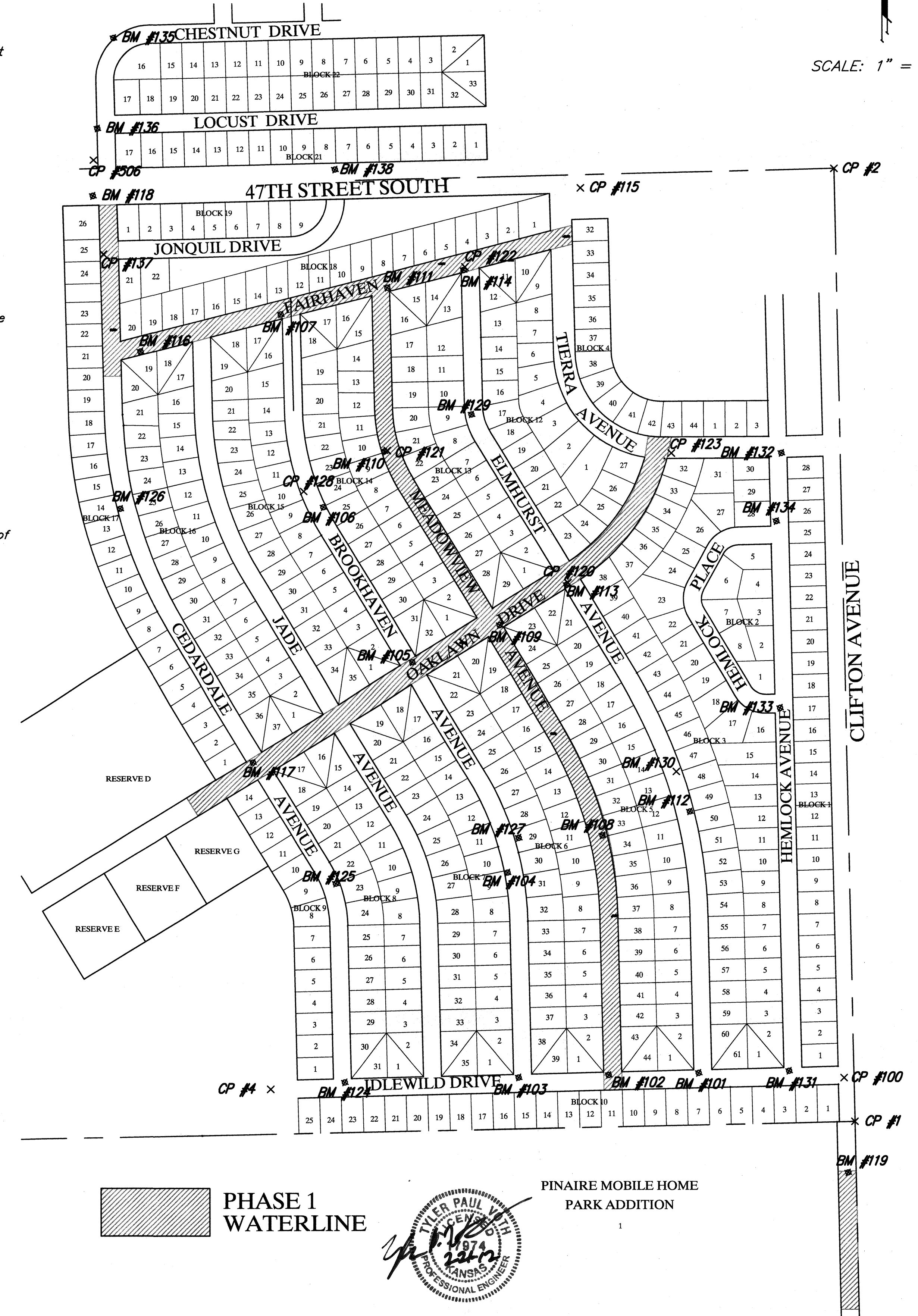
CP #115 - Chiseled "+" and walk SW corner of 47th Street South & Tierra Avenue.
N-12568.79 E-19239.87

CP #120 - Magnail/washer at SW corner of Oaklawn Drive & Elmhurst.
N-11480.67 E-19204.35

CP #121 - Magnail/washer on Meadowview, ± 7' East of Light Pole on the West Side of Meadowview between #4945 & #4931.
N-11848.24 E-18703.20

CP #122 - Magnail/washer at SW corner of Elmhurst & Fairhaven.
N-12353.30 E-18919.21

CP #123 - Magnail/washer at SE corner of intersection of Oaklawn & Tierra, ±40' East of CL of intersection, 10' North of MH#129.
N-11840.44 E-19491.74



PHASE 1 WATERLINE



PINAIRE MOBILE HOME PARK ADDITION

Drawing File: E:\Projects\Oaklawn Water Main Replacement\Civil 3D\Keysheet.dwg

Project No. 11-08-EG54 CAPITOL IMPROVEMENT PROJECT
Design: TPV
Drawn: TV/TMS
Approved: ENGINEER
Scale: NOTED

PROJECT KEYSHEET

OAKLAWN WATER MAIN REPLACEMENT - PHASE 1

Baughman Company, P.A.
315 Ellis St. Wichita, KS 67211 P 316-262-7271 F 316-262-0149
ENGINEERING | SURVEYING | PLANNING | LANDSCAPE ARCHITECTURE

February 2012
SHEET 2 OF 24