

BENCHMARK:
 BM #119 - Chiseled "+" in the SW Corner of the Entrance to Pinaire Mobile Home Park at 5205 S Clifton, 24.0' West of the Centerline of Clifton. Elev. = 1267.61 (NAVD 88)

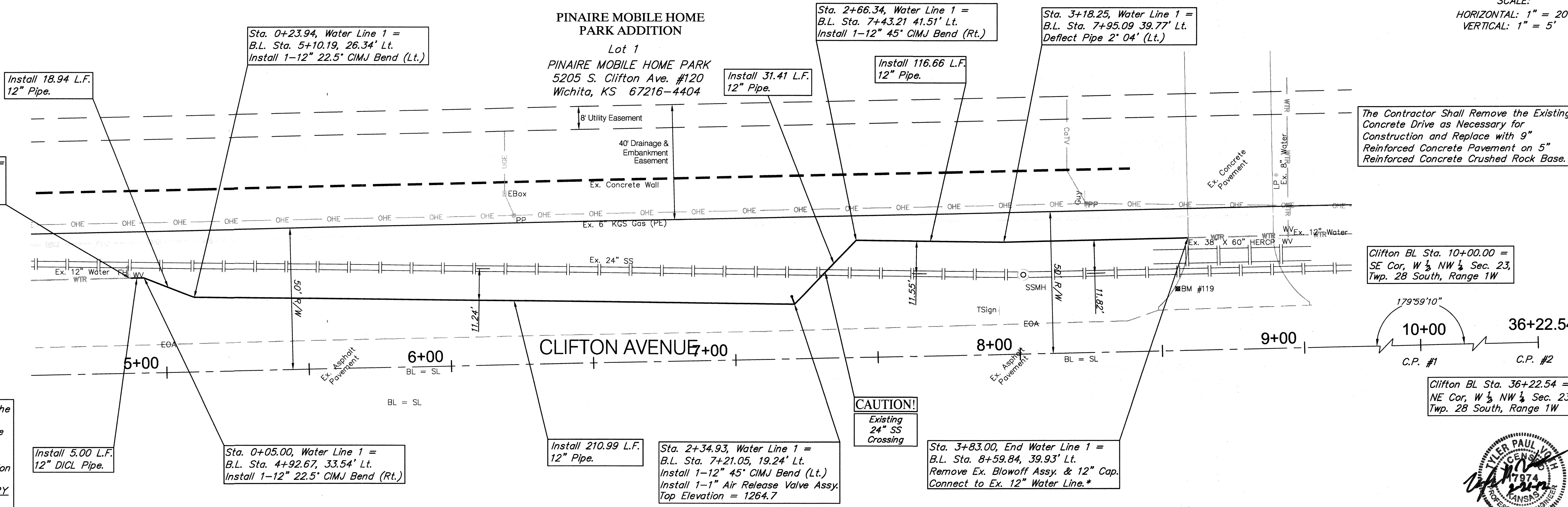
SCALE:
 HORIZONTAL: 1" = 20'
 VERTICAL: 1" = 5'

* Location of Existing Line is Based on Record Information from the City. The Contractor Shall Excavate the Ex. Water and to Verify Size and Location PRIOR to Beginning Construction. This Work Shall be Considered SUBSIDIARY to the Water Line Installation.

Sta. 0+00.00, Begin Water Line 1 = B.L. Sta. 4+87.67, 33.53' Lt. Remove Ex. 12" Plug & Extend Ex. 12" Water Line (N).*

All areas disturbed by construction of the 12" Water line in the Clifton ditch are to be restored by seeding with a mixture of Rye (applied at a rate of 50 lbs. per acre), Brohm Pure Live Seed (applied at a rate of 20 lbs per acre), and Western Wheatgrass Pure Live Seed (applied at a rate of 10 lbs per acre). The Contractor shall be responsible for installing Erosion Control Blanket (Curlax 1, or approved equal) to the limits of the seeded areas. All costs for this work shall be SUBSIDIARY to the Lump Sum bid item "Seeding".

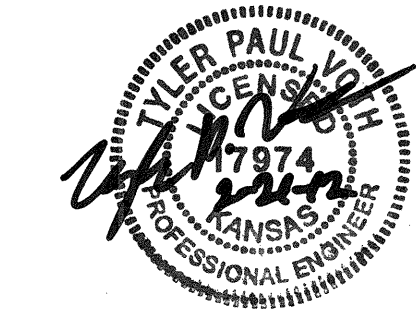
AREA TO BE SEEDED - 300 S.Y. (For Information Only)



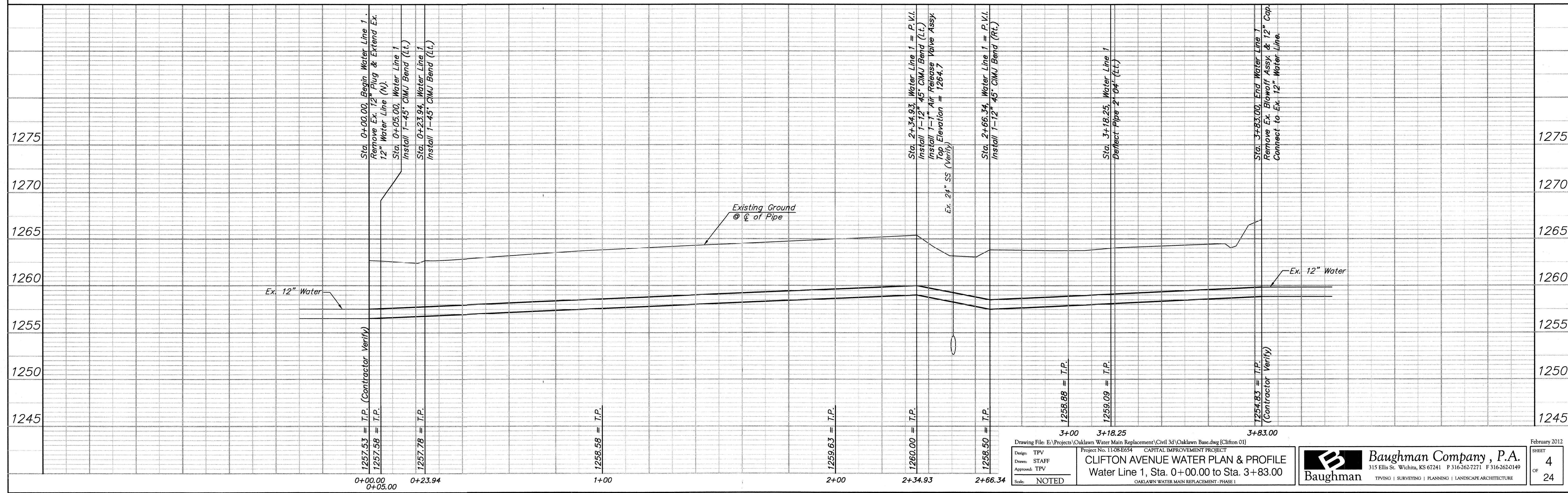
The Contractor Shall Remove the Existing Concrete Drive as Necessary for Construction and Replace with 9" Reinforced Concrete Pavement on 5" Reinforced Concrete Crushed Rock Base.

Clifton Bl. Sta. 10+00.00 = SE Cor, W 1/2 NW 1/4 Sec. 23, Twp. 28 South, Range 1W

Clifton Bl. Sta. 36+22.54 = NE Cor, W 1/2 NW 1/4 Sec. 23, Twp. 28 South, Range 1W



Water Line 1



Drawing File: E:\Projects\Oaklawn Water Main Replacement\Civil 3d\Oaklawn Base.dwg (Clifton 01)
 Project No. 11-08-0654 CAPITAL IMPROVEMENT PROJECT
 CLIFTON AVENUE WATER PLAN & PROFILE
 Water Line 1, Sta. 0+00.00 to Sta. 3+83.00
 OAKLAWN WATER MAIN REPLACEMENT - PHASE I
 Design: TPV
 Drawn: STAFF
 Approved: TPV
 Scale: NOTED

Baughman Company, P.A.
 315 Ellis St. Wichita, KS 67241 P 316-262-7271 F 316-262-0149
 Baughman TPVING | SURVEYING | PLANNING | LANDSCAPE ARCHITECTURE

February 2012
 SHEET 4 OF 24